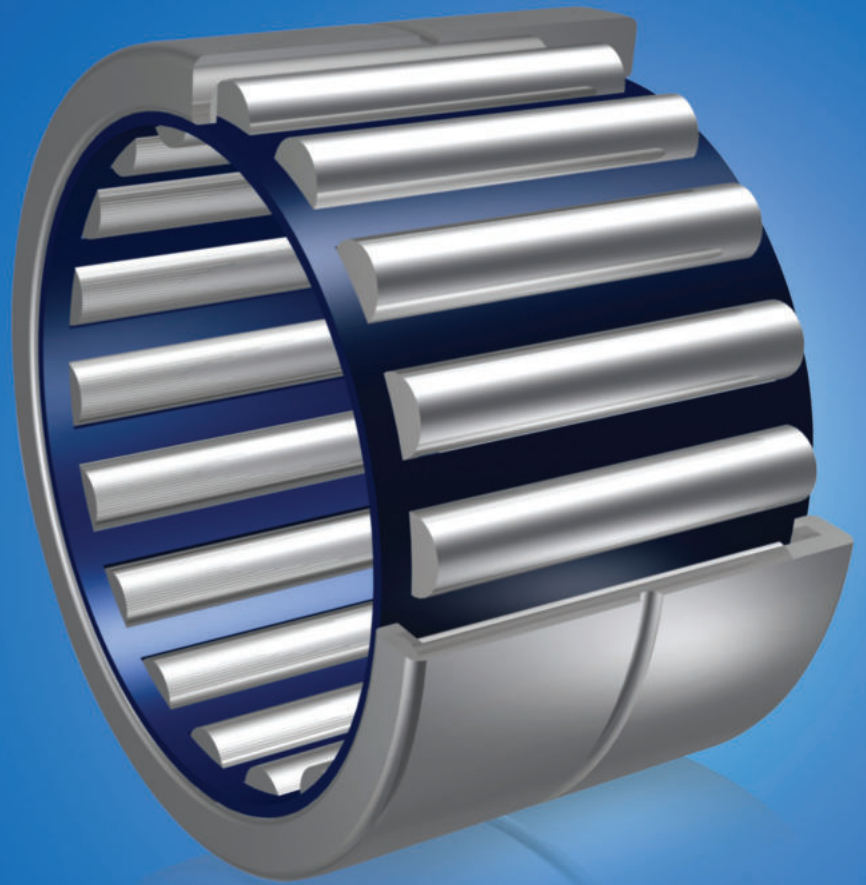


**ZON™**  
BEARINGS FOR YOUR FUTURE



Rolamentos de Agulhas – Série NK





BEARINGS FOR YOUR FUTURE

Os rolamentos ZEN são fabricados de acordo com o mais alto padrão de qualidade, para aplicações “standard” e “non-standard”  
Nosso departamento técnico pode modificar qualquer rolamento para atender seus requerimentos, independente da quantidade.

Além da nossa extensa linha de rolamentos miniatura, com mais de 1000 tipos diferentes, variando de 1-10mm de diâmetro interno (incluindo medidas em polegadas), nossa linha também inclui: rolamentos axiais de esferas, rolamentos fixos de esferas e qualquer tipo de rolamentos especiais. Nós estamos aptos a desenhar rolamentos de acordo com seus requerimentos usando materiais novos como cerâmica ou aços especiais, para aplicações na indústria química, alimentícia e farmacêutica.

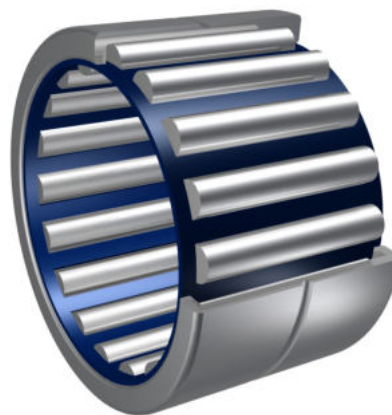
Nosso departamento técnico pode modificar qualquer rolamento especial para atender seus requerimentos específicos, inclusive para quantidades pequenas.

Para qualquer item não listado no nosso catálogo, favor entrar em contato com nossa equipe de vendas



Zen Ball Bearings Shanghai conquistou o certificado alemão ISO TUV Rheinland para inspeção dos produtos ZEN.

Esta certificação representa o mais alto padrão que uma empresa do nosso segmento pode alcançar. É internacionalmente reconhecida como garantia de qualidade, foco no cliente e melhoria contínua.



### Rolamentos de Agulhas – Série NK



Lubrificação com óleo



Lubrificação com graxa



Adequado para aplicações de alta velocidade

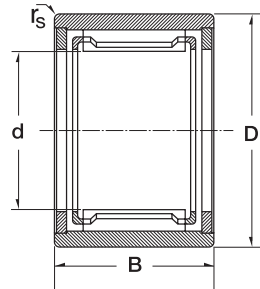
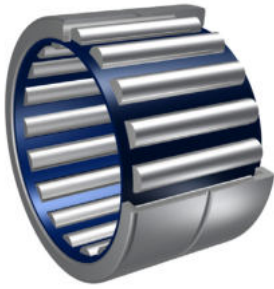


Adequado para altas cargas



Vedação de borracha disponível

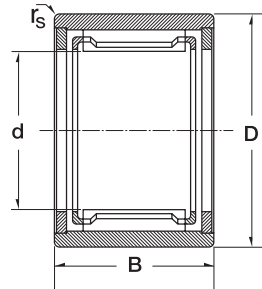
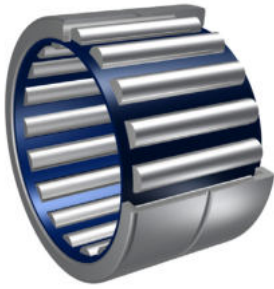
# Rolamentos de Agulhas – Série NK



3

Dimension (mm)				Designation/Type GD	*Basic Load Rating		*Limiting Speed x1000rpm		Mass (g) approx.
d	D	B	r <sub>s</sub>		C, dyn. N	C, stat. N	Grease	Oil	
5.0	10.0	10.0	0.15	NK 5/10 B TN	2385	1728	24	39	3 g
5.0	10.0	12.0	0.15	NK 5/12 TN	3060	2385	24	39	4 g
6.0	12.0	10.0	0.15	NK 6/10	2655	2052	22	36	5 g
6.0	12.0	12.0	0.15	NK 6/12 TN	3420	2835	22	36	6 g
7.0	14.0	10.0	0.3	NK 7/10 TN	3060	2385	20	34	7 g
7.0	14.0	12.0	0.3	NK 7/12 TN	3690	3150	20	34	8 g
8.0	15.0	12.0	0.3	NK 8/12	4005	3690	19	32	8 g
8.0	15.0	16.0	0.3	NK 8/16	5220	5220	19	32	12 g
9.0	16.0	12.0	0.3	NK 9/12	4590	4500	18	30	10 g
9.0	16.0	16.0	0.3	NK 9/16	5940	6390	18	30	13 g
10.0	17.0	12.0	0.3	NK 10/12	4770	4950	17	28	10 g
10.0	17.0	16.0	0.3	NK 10/16	6300	7020	17	28	13 g
12.0	19.0	12.0	0.3	NK 12/12	6480	6390	16	26	12 g
12.0	19.0	16.0	0.3	NK 12/16	9090	9900	16	26	16 g
14.0	22.0	13.0	0.3	RNA 4900	8640	8280	15	25	16 g
14.0	22.0	16.0	0.3	NK 14/16	10260	10350	15	25	21 g
14.0	22.0	20.0	0.3	NK 14/20	13050	14040	15	25	25 g
14.0	22.0	13.0	0.3	RNA 4900-2RS	6930	6210	15	25	16 g
15.0	23.0	16.0	0.3	NK 15/16	10890	11430	14.4	24	21 g
15.0	23.0	20.0	0.3	NK 15/20	13860	15480	14.4	24	27 g
15.0	23.0	12.0	0.3	NK 15/12	10890	11430	21	-	19 g
16.0	24.0	13.0	0.3	RNA 4901	9540	9810	14	23	17 g
16.0	24.0	16.0	0.3	NK 16/16	11520	12510	14	23	22 g
16.0	24.0	20.0	0.3	NK 16/20	14670	16920	14	23	28 g
16.0	24.0	22.0	0.3	RNA 6901	16290	19440	14	23	31 g
16.0	24.0	13.0	0.3	RNA 4901-2RS	7740	7470	14	23	17 g
16.0	24.0	22.0	0.3	RNA 6901-2RS	14490	20880	14	23	31 g
17.0	25.0	16.0	0.3	NK 17/16	12150	13500	14	23	24 g
17.0	25.0	20.0	0.3	NK 17/20	15390	18360	14	23	30 g
18.0	26.0	16.0	0.3	NK 18/16	12690	14580	14	22	25 g

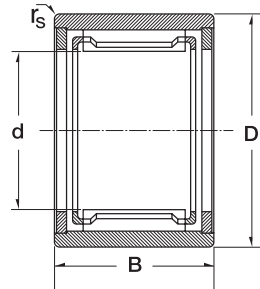
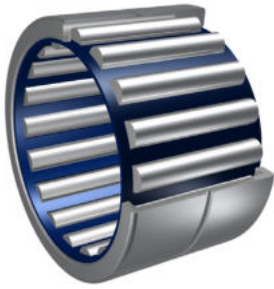
# Rolamentos de Agulhas – Série NK



4

Dimension (mm)				Designation/Type GD	*Basic Load Rating		*Limiting Speed x1000rpm		Mass (g) approx.
d	D	B	r <sub>s</sub>		C, dyn. N	C, stat. N	Grease	Oil	
18.0	26.0	20.0	0.3	NK 18/20	16110	19800	14	22	31 g
19.0	27.0	16.0	0.3	NK 19/16	13230	15660	14	22	26 g
19.0	27.0	20.0	0.3	NK 19/20	16830	21240	14	22	32 g
20.0	28.0	13.0	0.3	RNA 4902	10800	12240	13	20	22 g
20.0	28.0	16.0	0.3	NK 20/16	13140	15750	13	20	27 g
20.0	28.0	20.0	0.3	NK 20/20	16740	21420	13	20	34 g
20.0	28.0	23.0	0.3	RNA 6902	17550	22950	13	20	40 g
20.0	32.0	20.0	0.6	NKS 20	23400	22500	13	20	49 g
20.0	28.0	13.0	0.3	RNA 4902-2RS	8730	9270	13	20	22 g
20.0	28.0	23.0	0.3	RNA 6902-2RS	17550	22950	13	20	40 g
21.0	29.0	16.0	0.3	NK 21/16	13680	16830	13	20	28 g
21.0	29.0	20.0	0.3	NK 21/20	17370	22950	13	20	35 g
22.0	30.0	13.0	0.3	RNA 4903	11160	13140	12	19	22 g
22.0	30.0	16.0	0.3	NK 22/16	14220	17910	12	19	30 g
22.0	30.0	20.0	0.3	NK 22/20	18000	24300	12	19	37 g
22.0	30.0	23.0	0.3	RNA 6903	18990	26100	12	19	42 g
22.0	35.0	20.0	0.6	NKS 22	24750	25200	12	19	61 g
22.0	30.0	13.0	0.3	RNA 4903-2RS	9000	9900	12	19	22 g
22.0	30.0	23.0	0.3	RNA 6903-2RS	18990	26100	12	19	42 g
24.0	32.0	16.0	0.3	NK 24/16	15210	20070	10	17	32 g
24.0	32.0	20.0	0.3	NK 24/20	19260	27450	10	17	40 g
24.0	37.0	20.0	0.6	NKS 24	26550	27900	10	17	65 g
25.0	33.0	16.0	0.3	NK 25/16	15120	20160	10	17	33 g
25.0	33.0	20.0	0.3	NK 25/20	19170	27450	10	17	42 g
25.0	37.0	17.0	0.3	RNA 4904	21330	22950	10	17	52 g
25.0	37.0	30.0	0.3	RNA 6904	36450	45900	10	17	100 g
25.0	38.0	20.0	0.6	NKS 25	27900	30150	10	17	68 g
25.0	37.0	17.0	0.3	RNA 4904-2RS	17550	17910	10	17	52 g
25.0	37.0	30.0	0.3	RNA 6904-2RS	36450	45900	10	17	100 g
26.0	34.0	16.0	0.3	NK 26/16	15570	21240	9.5	16	34 g

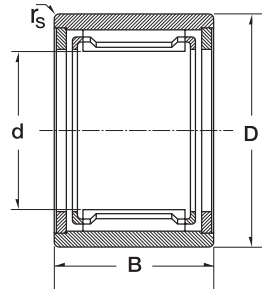
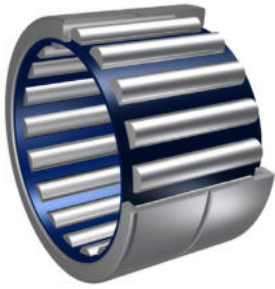
# Rolamentos de Agulhas – Série NK



5

Dimension (mm)				Designation/Type GD	*Basic Load Rating		*Limiting Speed x1000rpm		Mass (g) approx.
d	D	B	r <sub>s</sub>		C, dyn. N	C, stat. N	Grease	Oil	
26.0	34.0	20.0	0.3	NK 26/20	19800	28800	9.5	16	42 g
28.0	37.0	20.0	0.3	NK 28/20	22320	30600	9	15	52 g
28.0	37.0	30.0	0.3	NK 28/30	33300	51300	9	15	82 g
28.0	39.0	17.0	0.3	RNA 49/22	23400	26550	9	15	50 g
28.0	39.0	30.0	0.3	RNA 69/22	37800	49500	9	15	98 g
28.0	42.0	20.0	0.3	NKS 28	29250	32850	9	15	84 g
28.0	39.0	17.0	0.3	RNA 49/22-2RS	20970	28800	9	15	50 g
28.0	39.0	30.0	0.3	RNA 69/22-2RS	33210	51300	9	15	98 g
29.0	38.0	20.0	0.3	NK 29/20	24750	35100	8.5	14	54 g
29.0	38.0	30.0	0.3	NK 29/30	33300	51300	8.5	14	84 g
30.0	40.0	20.0	0.3	NK 30/20	25200	36900	8.5	14	65 g
30.0	40.0	30.0	0.3	NK 30/30	37800	62100	8.5	14	98 g
30.0	42.0	17.0	0.3	RNA 4905	23850	28350	8.5	14	61 g
30.0	42.0	30.0	0.3	RNA 6905	39600	53100	8.5	14	112 g
30.0	45.0	22.0	0.6	NKS 30	32850	36000	8.5	14	104 g
30.0	42.0	17.0	0.3	RNA 4905-2RS	19620	21780	8.5	14	61 g
30.0	42.0	30.0	0.3	RNA 6905-2RS	39600	53100	8.5	14	112 g
32.0	42.0	20.0	0.3	NK 32/20	26550	40050	8	13	68 g
32.0	42.0	30.0	0.3	NK 32/30	35100	56700	8	13	102 g
32.0	45.0	17.0	0.3	RNA 49/28	24750	30150	8	13	73 g
32.0	45.0	30.0	0.3	RNA 69/28	40950	56700	8	13	135 g
32.0	47.0	22.0	0.6	NKS 32	34200	39150	8	13	110 g
32.0	45.0	17.0	0.3	RNA 49/28-2RS	22590	32850	8	13	73 g
32.0	45.0	30.0	0.3	RNA 69/28-2RS	35640	58950	8	13	135 g
35.0	45.0	20.0	0.3	NK 35/20	27900	43650	7.5	12	74 g
35.0	45.0	30.0	0.3	NK 35/30	41400	72900	7.5	12	122 g
35.0	47.0	17.0	0.3	RNA 4906	25650	31950	7.5	12	69 g
35.0	47.0	30.0	0.3	RNA 6906	44100	63900	7.5	12	126 g
35.0	50.0	22.0	0.6	NKS 35	35550	42300	7.5	12	118 g
35.0	47.0	17.0	0.3	RNA 4906-2RS	21510	25650	7.5	12	69 g

# Rolamentos de Agulhas – Série NK

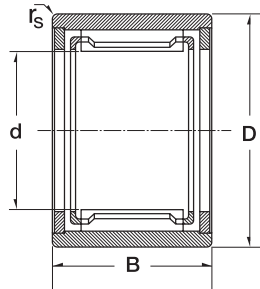
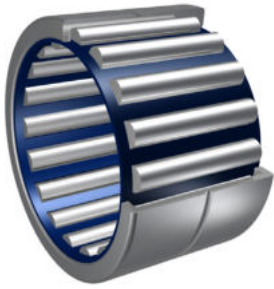


6

Dimension (mm)				Designation/Type GD	*Basic Load Rating		*Limiting Speed x1000rpm		Mass (g) approx.
d	D	B	r <sub>s</sub>		C, dyn. N	C, stat. N	Grease	Oil	
35.0	47.0	30.0	0.3	RNA 6906-2RS	44100	63900	7.5	12	126 g
37.0	47.0	20.0	0.3	NK 37/20	25200	39150	7	11	77 g
37.0	47.0	30.0	0.3	NK 37/30	65700	37800	7	11	113 g
37.0	52.0	22.0	0.6	NKS 37	37350	45000	7	11	123 g
38.0	48.0	20.0	0.3	NK 38/20	26100	40500	7	11	79 g
38.0	48.0	30.0	0.3	NK 38/30	38700	68400	7	11	116 g
40.0	50.0	20.0	0.3	NK 40/20	30150	50400	6.7	10	83 g
40.0	50.0	30.0	0.3	NK 40/30	39600	71100	6.7	10	125 g
40.0	52.0	20.0	0.6	RNA 49/32	31050	42750	6.7	10	89 g
40.0	52.0	36.0	0.6	RNA 69/32	42570	81000	6.7	10	162 g
40.0	55.0	22.0	0.6	NKS 40	38250	48600	6.7	10	129 g
40.0	52.0	20.0	0.6	RNA 49/32-2RS	27720	45900	6.7	10	89 g
40.0	52.0	36.0	0.6	RNA 69/32-2RS	42570	81000	6.7	10	162 g
42.0	52.0	20.0	0.3	NK 42/20	27000	44100	6.7	10	86 g
42.0	52.0	30.0	0.3	NK 42/30	40050	73800	6.7	10	130 g
42.0	55.0	20.0	0.6	RNA 4907	31950	45000	6.7	10	107 g
42.0	55.0	36.0	0.6	RNA 6907	43560	83700	6.7	10	193 g
42.0	55.0	20.0	0.6	RNA 4907-2RS	26550	35550	6.7	10	107 g
42.0	55.0	36.0	0.6	RNA 6907-2RS	43560	83700	6.7	10	193 g
43.0	53.0	20.0	0.3	NK 43/20	27450	45900	6.3	9.5	86 g
43.0	53.0	30.0	0.3	NK 43/30	40950	76500	6.3	9.5	133 g
43.0	58.0	22.0	0.6	NKS 43	39600	51300	6.3	9.5	139 g
45.0	55.0	20.0	0.3	NK 45/20	31500	55800	6.3	9.5	91 g
45.0	55.0	30.0	0.3	NK 45/30	46800	92700	6.3	9.5	139 g
45.0	60.0	22.0	0.6	NKS 45	40950	54000	6	9	145 g
47.0	57.0	20.0	0.3	NK 47/20	29250	50400	6	9	94 g
47.0	57.0	30.0	0.3	NK 47/30	43650	84600	6	9	142 g
48.0	62.0	22.0	0.6	RNA 4908	43650	60300	5.6	8.5	140 g
48.0	62.0	40.0	0.6	RNA 6908	60390	112500	5.6	8.5	256 g
48.0	62.0	22.0	0.6	RNA 4908-2RS	36900	47700	5.6	8.5	140 g



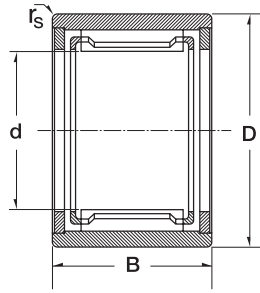
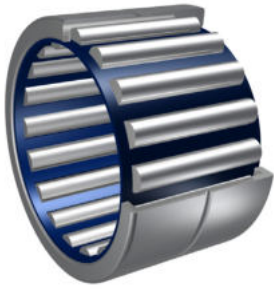
# Rolamentos de Agulhas – Série NK



7

Dimension (mm)				Designation/Type GD	*Basic Load Rating		*Limiting Speed x1000rpm		Mass (g) approx.
d	D	B	r <sub>s</sub>		C, dyn. N	C, stat. N	Grease	Oil	
48.0	62.0	40.0	0.6	RNA 6908-2RS	60390	112500	5.6	8.5	256 g
50.0	62.0	25.0	0.6	NK 50/25	43650	78300	5.6	8.5	158 g
50.0	62.0	35.0	0.6	NK 50/35	60300	118800	5.6	8.5	221 g
50.0	65.0	22.0	1	NKS 50	43200	60300	5.6	8.5	157 g
52.0	68.0	22.0	0.6	RNA 4909	45900	65700	5.3	8	182 g
52.0	68.0	40.0	0.6	RNA 6909	63360	123300	5.3	8	338 g
52.0	68.0	22.0	0.6	RNA 4909-2RS	38700	53100	5.3	8	182 g
52.0	68.0	40.0	0.6	RNA 6909-2RS	63360	123300	5.3	8	338 g
55.0	68.0	25.0	0.6	NK 55/25	40950	73800	5	7.5	180 g
55.0	68.0	35.0	0.6	NK 55/35	54000	106200	5	7.5	250 g
55.0	72.0	22.0	1	NKS 55	45900	66600	5	7.5	221 g
58.0	72.0	22.0	0.6	RNA 4910	47700	72000	4.8	7	163 g
58.0	72.0	40.0	0.6	RNA 6910	66330	135000	4.8	7	310 g
58.0	72.0	22.0	0.6	RNA 4910-2RS	40500	57600	4.8	7	163 g
58.0	72.0	40.0	0.6	RNA 6910-2RS	66330	135000	4.8	7	310 g
60.0	72.0	25.0	0.6	NK 60/25	47700	92700	4.8	7	185 g
60.0	72.0	35.0	0.6	NK 60/35	56700	117000	4.8	7	258 g
60.0	80.0	28.0	1.1	NKS 60	63900	88200	4.8	7	335 g
63.0	80.0	25.0	1	RNA 4911	58500	90000	4.5	6.7	255 g
63.0	80.0	45.0	1	RNA 6911	80730	171000	4.5	6.7	470 g
63.0	80.0	25.0	1	RNA 4911-2RS	51480	95400	4.5	6.7	255 g
63.0	80.0	45.0	1	RNA 6911-2RS	76950	150300	4.5	6.7	470 g
65.0	78.0	25.0	0.6	NK 65/25	45000	88200	4.5	6.3	221 g
65.0	78.0	35.0	0.6	NK 65/35	59400	127800	4.3	6.3	310 g
65.0	85.0	28.0	1.1	NKS 65	67500	97200	4.3	6	365 g
68.0	82.0	25.0	0.6	NK 68/25	44550	80100	4	6	241 g
68.0	82.0	35.0	0.6	NK 68/35	63000	125100	4	6	338 g
68.0	85.0	25.0	1	RNA 4912	61200	97200	4	6	275 g
68.0	85.0	45.0	1	RNA 6912	84150	183600	4	6	488 g
68.0	85.0	25.0	1	RNA 4912-2RS	51300	92340	4	6	275 g

# Rolamentos de Agulhas – Série NK



8

Dimension (mm)				Designation/Type GD	*Basic Load Rating		*Limiting Speed x1000rpm		Mass (g) approx.
d	D	B	r <sub>s</sub>		C, dyn. N	C, stat. N	Grease	Oil	
68.0	85.0	45.0	1	RNA 6912-2RS	80370	163260	4	6	488 g
70.0	85.0	25.0	0.6	NK 70/25	45000	82800	4	6	260 g
70.0	85.0	35.0	0.6	NK 70/35	63900	129600	4	6	370 g
70.0	90.0	28.0	1.1	NKS 70	69300	101700	4	6	380 g
72.0	90.0	25.0	1	RNA 4913	62100	100800	4	6	312 g
72.0	90.0	45.0	1	RNA 6913	85680	190800	4	6	580 g
72.0	90.0	25.0	1	RNA 4913-2RS	51750	99450	4	6	312 g
72.0	90.0	45.0	1	RNA 6913-2RS	81225	169290	4	6	580 g
73.0	90.0	25.0	0.6	NK 73/25	54000	90000	3.8	5.6	302 g
73.0	90.0	35.0	0.6	NK 73/35	76500	140400	3.8	5.6	428 g
75.0	92.0	35.0	1	NK 75/35	78300	145800	6.1	-	445 g
85.0	105.0	35.0	1	NK 85/35	99900	173700	5.4	-	600 g
105.0	125.0	36.0	1	NK 105/36	116100	225000	4.4	-	713 g



[www.zen.biz](http://www.zen.biz)

Todos os direitos reservados.  
Nenhuma parte do catálogo pode  
ser copiada, extraída ou modificada  
sem prévia autorização.

v.10 / 18



Bearings for your future