

ZON™

BEARINGS FOR YOUR FUTURE



Rostfreie Wellenmuttern und Sicherungsbleche
Stainless Steel Lock Nuts & Washers





BEARINGS FOR YOUR FUTURE

Zen Ball Bearings are manufactured to the highest quality for standard and non-standard applications. Our technical department can modify any non-standard bearings to your specific requirements, regardless of quantity.

Apart from our extensive miniature ball bearing range of more than 1000 different types, ranging from 1-10 mm bore (Including inch dimensions), our range also includes Thin section, Three part thrust, Popular metric and any kind of non standard bearing. We are able to design bearings according to your requirements using new materials like ceramic or special steels for applications in Industry, Medicine, Chemistry and Food Processing.

Our technical department can modify any non-standard bearings to your specific requirements, even for small quantities.

For any items not listed in our catalogue, please contact our experienced sales team.



Rostfreie Wellenmuttern
und Sicherungsbleche
**Stainless Steel Lock Nuts
& Washers**

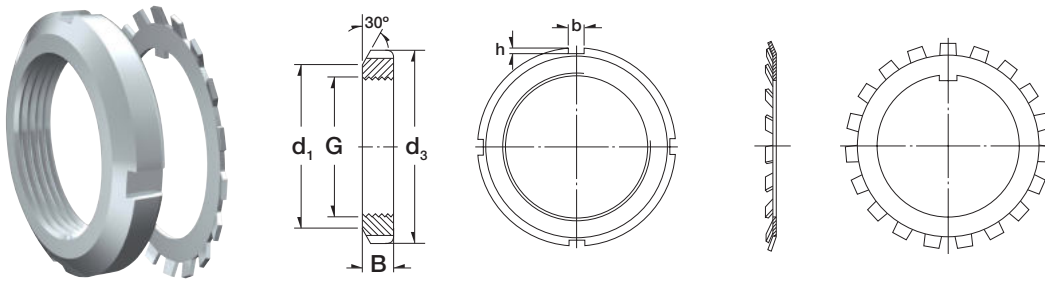


Zen Ball Bearings Shanghai has been awarded the German ISO TUV Rheinland certification for inspection of ZEN products.

This certification is the highest standard a business in our industry can achieve. It is internationally recognised as a guarantee of quality, customer focus and continual improvement.

www.zen.biz

Rostfreie Wellenmuttern und Sicherungsbleche / Stainless Steel Lock Nuts & Washers



3

| Designation/Type | | Dimension (mm) | | | | | |
|------------------|----------------------------|----------------|----------------|----------------|------|------|-----|
| Lock nut | Appropriate locking washer | G | d ₁ | d ₃ | B | b | h |
| SKM 0 | SMB 0 | M 10 x 0,75 | 13.5 | 18.0 | 4.0 | 3.0 | 2.0 |
| SKM 1 | SMB 1 | M 12 x 1 | 17.0 | 22.0 | 4.0 | 3.0 | 2.0 |
| SKM 2 | SMB 2 | M 15 x 1 | 21.0 | 25.0 | 5.0 | 4.0 | 2.0 |
| SKM 3 | SMB 3 | M 17 x 1 | 24.0 | 28.0 | 5.0 | 4.0 | 2.0 |
| SKM 4 | SMB 4 | M 20 x 1 | 26.0 | 32.0 | 6.0 | 4.0 | 2.0 |
| SKM 5 | SMB 5 | M 25 x 1.5 | 32.0 | 38.0 | 7.0 | 5.0 | 2.0 |
| SKM 6 | SMB 6 | M 30 x 1.5 | 38.0 | 45.0 | 7.0 | 5.0 | 2.0 |
| SKM 7 | SMB 7 | M 35 x 1.5 | 44.0 | 52.0 | 8.0 | 5.0 | 2.0 |
| SKM 8 | SMB 8 | M 40 x 1.5 | 50.0 | 58.0 | 9.0 | 6.0 | 2.5 |
| SKM 9 | SMB 9 | M 45 x 1.5 | 56.0 | 65.0 | 10.0 | 6.0 | 2.5 |
| SKM 10 | SMB 10 | M 50 x 1.5 | 61.0 | 70.0 | 11.0 | 6.0 | 2.5 |
| SKM 11 | SMB 11 | M 55 x 2 | 67.0 | 75.0 | 11.0 | 7.0 | 3.0 |
| SKM 12 | SMB 12 | M 60 x 2 | 73.0 | 80.0 | 11.0 | 7.0 | 3.0 |
| SKM 13 | SMB 13 | M 65 x 2 | 79.0 | 85.0 | 12.0 | 7.0 | 3.0 |
| SKM 14 | SMB 14 | M 70 x 2 | 85.0 | 92.0 | 12.0 | 8.0 | 3.5 |
| SKM 15 | SMB 15 | M 75 x 2 | 90.0 | 98.0 | 13.0 | 8.0 | 3.5 |
| SKM 16 | SMB 16 | M 80 x 2 | 95.0 | 105.0 | 15.0 | 8.0 | 3.5 |
| SKM 17 | SMB 17 | M 85 x 2 | 102.0 | 110.0 | 16.0 | 8.0 | 3.5 |
| SKM 18 | SMB 18 | M 90 x 2 | 108.0 | 120.0 | 16.0 | 10.0 | 4.0 |
| SKM 19 | SMB 19 | M 95 x 2 | 113.0 | 125.0 | 17.0 | 10.0 | 4.0 |
| SKM 20 | SMB 20 | M 100 x 2 | 120.0 | 130.0 | 18.0 | 10.0 | 4.0 |

www.zen.biz

Alle Rechte vorbehalten, kein Teil des Katalogs darf in irgendeiner Form (Druck, Fotokopie, Mikrofilm oder in einem anderen Verfahren) ohne Genehmigung reproduziert oder unter Verwendung elektronischer Systeme verarbeitet, vervielfältigt oder verbreitet werden.

Copyright reserved. No part of the catalogue is to be copied, extracted or modified without explicit permission from the copyright holder.

v.10 / 18



Bearings for your future