

ZON™

BEARINGS FOR YOUR FUTURE



K Nadelkränze / K Needle Roller Bearing





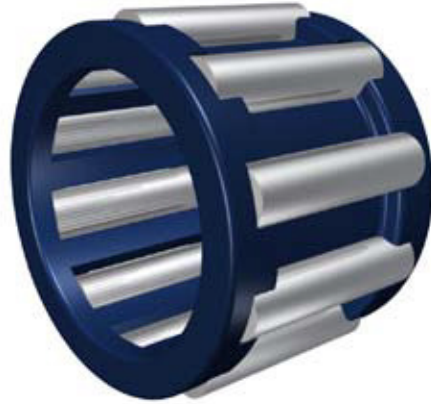
BEARINGS FOR YOUR FUTURE

Zen Ball Bearings are manufactured to the highest quality for standard and non-standard applications. Our technical department can modify any non-standard bearings to your specific requirements, regardless of quantity.

Apart from our extensive miniature ball bearing range of more than 1000 different types, ranging from 1-10 mm bore (Including inch dimensions), our range also includes Thin section, Three part thrust, Popular metric and any kind of non standard bearing. We are able to design bearings according to your requirements using new materials like ceramic or special steels for applications in Industry, Medicine, Chemistry and Food Processing.

Our technical department can modify any non-standard bearings to your specific requirements, even for small quantities.

For any items not listed in our catalogue, please contact our experienced sales team.



K Nadelkränze **K Needle Roller Bearing**



Ölschmierung
Oil lubrication



Geeignet für hohe drehzahlen
Suitable for high speed applications



Geeignet für hohe tragzahlen
Suitable for heavy load rating



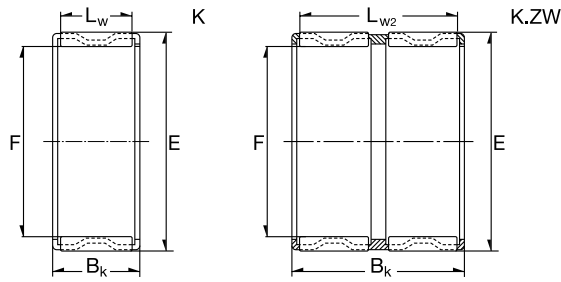
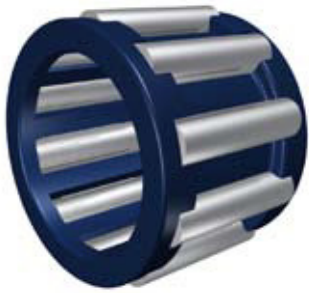
Zen Ball Bearings Shanghai has been awarded the German ISO TUV Rheinland certification for inspection of ZEN products.

This certification is the highest standard a business in our industry can achieve.

It is internationally recognised as a guarantee of quality, customer focus and continual improvement.

www.zen.biz

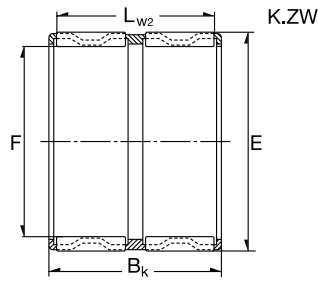
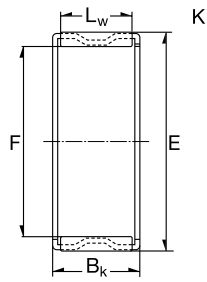
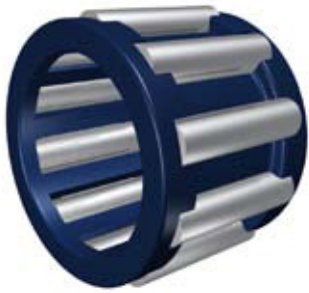
K Nadelkränze / K Needle Roller Bearing



3

Dimension (mm)			Designation/Type	*Basic Load Rating		*LimitingSpeed x1000rpm Oil	Mass (g) approx.
F	E	BK		C	Co		
5.0	8.0	8.0	K5-8-8 TN	2300	1880	37.0	>1 g
5.0	8.0	10.0	K5-8-10 TN	2800	2450	37.0	>1 g
6.0	9.0	8.0	K6-9-8 TN	2560	2240	35.0	>1 g
6.0	9.0	10.0	K6-9-10 TN	3300	3100	35.0	1.0 g
6.0	10.0	13.0	K6-9-13 TN	3500	2800	33.0	>1 g
7.0	10.0	8.0	K7-10-8 TN	2750	2550	32.0	1 g
7.0	10.0	10.0	K7-10-10 TN	3350	3400	32.0	1 g
8.0	11.0	8.0	K8-11-8 TN	3000	2900	30.0	1 g
8.0	11.0	10.0	K8-11-10 TN	3830	3950	30.0	1 g
8.0	11.0	13.0	K8-11-13 TN	5000	5700	30.0	1 g
8.0	12.0	10.0	K8-12-10 TN	4900	4600	30.0	1 g
9.0	12.0	10.0	K9-12-10 TN	4200	4700	30.0	1g
9.0	12.0	13.0	K9-12-13 TN	5500	6700	30.0	1g
10.0	13.0	10.0	K10-13-10 TN	4500	5250	27.0	1g
10.0	13.0	13.0	K10-13-13 TN	6000	7600	27.0	2g
10.0	13.0	16.0	K10-13-16 TN	6300	7800	27.0	2g
10.0	14.0	10.0	K10-14-10 TN	7000	7900	26.0	2 g
10.0	14.0	13.0	K10-14-13 TN	8000	9100	27.0	4 g
10.0	16.0	12.0	K10-16-12 TN	7000	9300	27.0	3 g
12.0	15.0	9.0	K12-15-9 TN	4120	5210	25.0	2 g
12.0	15.0	10.0	K12-15-10 TN	4320	5730	25.0	1 g
12.0	15.0	13.0	K12-15-13 TN	6000	8100	25.0	2 g
12.0	16.0	8.0	K12-16-8 TN	4200	4700	25.0	2 g
12.0	16.0	10.0	K12-16-10 TN	6000	6900	25.0	3 g
12.0	16.0	13.0	K12-16-13 TN	7900	9200	25.0	3 g
12.0	17.0	13.0	K12-17-13 TN	9300	10000	24.0	4 g
12.0	18.0	12.0	K12-18-12 TN	9800	8000	24.0	5 g
12.0	15.0	20.0	K12-15-20 TN	8200	12000	25.0	3 g
14.0	17.0	10.0	K14-17-10	5100	6800	23.0	4 g
14.0	17.0	17.0	K14-17-17	9300	14000	23.0	6 g

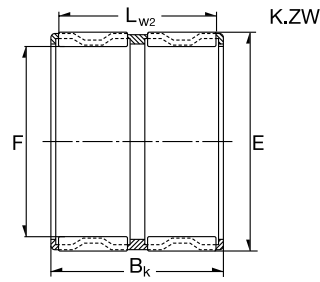
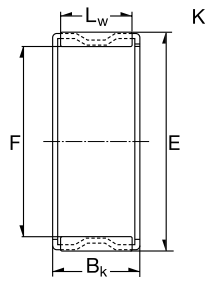
K Nadelkränze / K Needle Roller Bearing



4

Dimension (mm)			Designation/Type	*Basic Load Rating		*LimitingSpeed x1000rpm Oil	Mass (g) approx.
F	E	BK		C	Co		
14.0	18.0	10.0	K14-18-10	6800	8300	23.0	4 g
14.0	18.0	13.0	K14-18-13	8100	9800	23.0	6 g
14.0	18.0	14.0	K14-18-14	9200	12000	23.0	5 g
14.0	18.0	15.0	K14-18-15	10000	13000	23.0	7 g
14.0	18.0	17.0	K14-18-17	10500	13900	23.0	-
14.0	20.0	12.0	K14-20-12	9900	10500	22.0	18 g
15.0	18.0	14.0	K15-18-14	7500	11000	23.0	5 g
15.0	18.0	17.0	K15-18-17	9600	15900	23.0	5 g
15.0	19.0	10.0	K15-19-10	7200	9000	23.0	5 g
15.0	19.0	13.0	K15-19-13	8300	9800	22.0	7 g
15.0	19.0	17.0	K15-19-17	10300	15000	22.0	8 g
15.0	19.0	24.0	K15-19-24	12800	20100	22.0	10 g
15.0	20.0	13.0	K15-20-13	9700	11000	22.0	8 g
15.0	21.0	12.0	K15-21-12	10000	13000	22.0	10 g
15.0	21.0	15.0	K15-21-15	13800	16000	22.0	13 g
15.0	21.0	21.0	K15-21-21	18000	24000	22.0	18 g
16.0	20.0	10.0	K16-20-10	7600	9700	22.0	5 g
16.0	20.0	13.0	K16-20-13	8700	11300	22.0	7 g
16.0	20.0	17.0	K16-20-17	11200	16300	22.0	9 g
16.0	21.0	10.0	K16-21-10	9000	12000	22.0	6 g
16.0	22.0	12.0	K16-22-12	11000	12000	21.0	10 g
16.0	22.0	13.0	K16-22-13	12000	13400	21.0	11 g
16.0	22.0	16.0	K16-22-16	14300	17000	21.0	13 g
16.0	22.0	20.0	K16-22-20	18000	22300	21.0	16 g
16.0	23.0	14.0	K16-23-14	19000	21000	19.0	20 g
16.0	24.0	20.0	K16-24-20	21100	23000	20.0	24 g
17.0	21.0	10.0	K17-21-10	7900	10100	21.0	5 g
17.0	21.0	13.0	K17-21-13	10000	14100	21.0	7 g
17.0	21.0	17.0	K17-21-17	12000	17400	21.0	9 g
17.0	23.0	14.0	K17-23-14	11000	15000	21.0	11 g

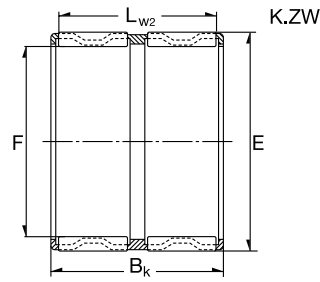
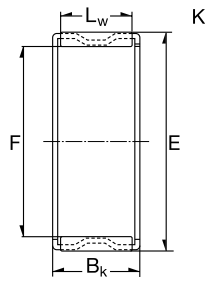
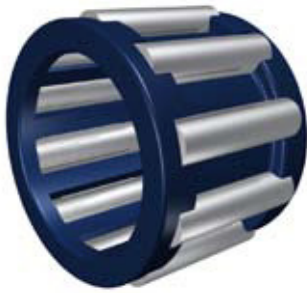
K Nadelkränze / K Needle Roller Bearing



5

Dimension (mm)			Designation/Type	*Basic Load Rating		*LimitingSpeed x1000rpm Oil	Mass (g) approx.
F	E	BK		C	Co		
18.0	22.0	10.0	K18-22-10	8200	9900	20.0	6 g
18.0	22.0	13.0	K18-22-13	9000	12100	20.0	7 g
18.0	22.0	17.0	K18-22-17	11900	17600	20.0	10 g
18.0	24.0	12.0	K18-24-12	11200	12900	20.0	11 g
18.0	24.0	13.0	K18-24-13	12900	14900	20.0	12 g
18.0	24.0	13.5	K18-24-13.5	12900	14900	20.0	13 g
18.0	24.0	20.0	K18-24-20	20000	26500	20.0	19 g
18.0	25.0	14.0	K18-25-14	16500	18800	20.0	14 g
18.0	25.0	22.0	K18-25-22	22900	28400	20.0	24 g
18.0	26.0	14.0	K18-26-14	18000	20000	18.0	19 g
18.0	28.0	16.0	K18-28-16	19000	18400	19.0	24 g
19.0	23.0	13.0	K19-23-13	9300	13000	20.0	8 g
19.0	23.0	17.0	K19-23-17	12000	18600	20.0	11 g
20.0	24.0	10.0	K20-24-10	8700	12100	19.0	6 g
20.0	24.0	12.0	K20-24-12	9600	13800	19.0	8 g
20.0	24.0	13.0	K20-24-13	9600	13800	19.0	8 g
20.0	24.0	17.0	K20-24-17	12400	20000	19.0	11 g
20.0	26.0	12.0	K20-26-12	13100	15700	19.0	13 g
20.0	26.0	16.0	K20-26-16	18000	25000	18.5	17 g
20.0	26.0	17.0	K20-26-17	18700	25500	19.0	18 g
20.0	26.0	20.0	K20-26-20	20600	28500	18.0	22 g
20.0	28.0	20.0	K20-28-20	23400	28000	18.0	26 g
20.0	28.0	25.0	K20-28-25	30000	28500	18.0	36 g
20.0	30.0	30.0	K20-30-30	35000	41000	19.0	56 g
21.0	25.0	13.0	K21-25-13	9600	14500	19.0	9 g
21.0	25.0	17.0	K21-25-17	12800	21000	18.0	12 g
22.0	26.0	10.0	K22-26-10	8700	12900	18.0	7 g
22.0	26.0	13.0	K22-26-13	10000	15400	18.0	9 g
22.0	26.0	17.0	K22-26-17	13100	22100	18.0	12 g
22.0	27.0	13.0	K22-27-13	14000	23000	18.0	10 g

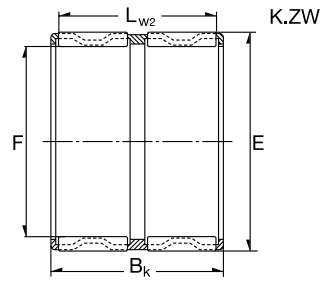
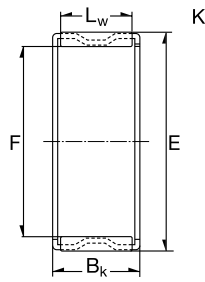
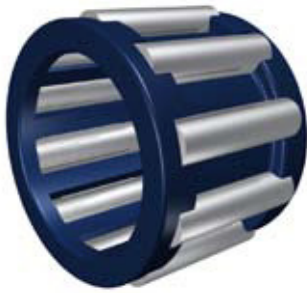
K Nadelkränze / K Needle Roller Bearing



6

Dimension (mm)			Designation/Type	*Basic Load Rating		*LimitingSpeed x1000rpm Oil	Mass (g) approx.
F	E	BK		C	Co		
22.0	28.0	17.0	K22-28-17	19000	26500	19.0	19 g
22.0	28.0	23.0	K22-28-23	20000	27000	17.0	26 g
22.0	29.0	16.0	K22-29-16	19500	25000	17.0	22 g
22.0	30.0	15.0	K22-30-15 TN	19600	22900	18.9	14 g
22.0	30.0	20.0	K22-30-20	21000	23500	18.9	28 g
23.0	32.0	24.0	K22-32-24	33500	39500	16.0	43 g
24.0	35.0	16.0	K23-35-16 TN	24000	23400	15.0	30 g
24.0	28.0	10.0	K24-28-10	9400	14300	17.0	8 g
24.0	28.0	13.0	K24-28-13	10500	17000	17.0	10 g
24.0	28.0	17.0	K24-28-17	14000	24500	17.0	13 g
24.0	29.0	13.0	K24-29-13	13100	19100	16.0	13 g
24.0	30.0	17.0	K24-30-17	19000	27000	16.0	21 g
24.0	30.0	31.0	K24-30-31	27000	43000	16.0	39 g
25.0	29.0	10.0	K25-29-10	9700	14900	16.0	8 g
25.0	29.0	13.0	K25-29-13	10800	17900	16.0	10 g
25.0	29.0	17.0	K25-29-17	14500	25500	16.0	13 g
25.0	30.0	13.0	K25-30-13	14100	21300	16.0	12 g
25.0	30.0	20.0	K25-30-20	21100	28000	16.0	20 g
25.0	30.0	25.0	K25-30-25	21700	40400	15.0	21 g
25.0	30.0	26.0	K25-30-26	20100	26500	15.0	21 g
25.0	31.0	17.0	K25-31-17	19000	28000	16.0	21 g
25.0	31.0	21.0	K25-31-21	24100	37500	16.0	26 g
25.0	32.0	16.0	K25-32-16	20500	27500	15.0	24 g
25.0	33.0	20.0	K25-33-20	28000	37500	15.0	32 g
25.0	33.0	24.0	K25-33-24	33900	46500	15.0	38 g
25.0	34.0	18.0	K25-34-18	48000	67000	15.0	32 g
25.0	35.0	30.0	K25-35-30	46500	61500	14.0	65 g
25.0	30.0	26.0	K25-30-26	21000	35000	14.0	27 g
26.0	30.0	10.0	K26-30-10	9500	15500	16.0	9 g
26.0	30.0	13.0	K26-30-13	11100	18700	16.0	11 g

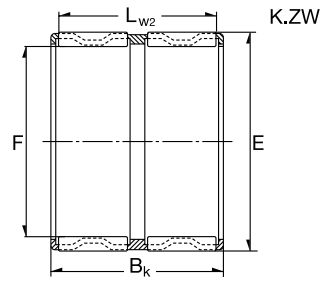
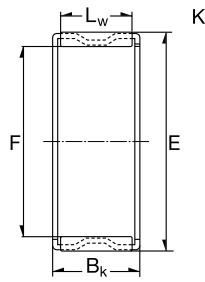
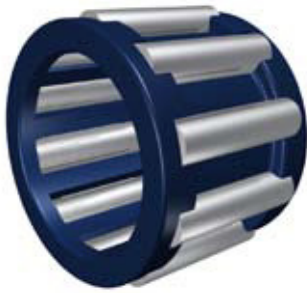
K Nadelkränze / K Needle Roller Bearing



7

Dimension (mm)			Designation/Type	*Basic Load Rating		*LimitingSpeed x1000rpm Oil	Mass (g) approx.
F	E	BK		C	Co		
26.0	30.0	17.0	K26-30-17	14700	27000	16.0	15 g
26.0	31.0	13.0	K26-31-13	12400	18400	15.0	9 g
26.0	30.0	22.0	K26-30-22	15200	28000	16.0	12 g
27.0	32.0	17.0	K27-32-17	16000	34000	17.0	29 g
28.0	32.0	16.5	K28-32-16.5	15000	32400	14.0	18 g
28.0	32.0	17.0	K28-32-17	15000	32400	14.0	18 g
28.0	33.0	13.0	K28-33-13	14800	23600	14.0	15 g
28.0	33.0	17.0	K28-33-17	19100	33000	14.0	19 g
28.0	33.0	27.0	K28-33-27 TN	22800	40500	14.0	19 g
28.0	34.0	17.0	K28-34-17	21300	35000	14.0	24 g
28.0	35.0	16.0	K28-35-16	21000	29000	14.0	29 g
28.0	35.0	18.0	K28-35-18	23500	33500	14.0	31 g
28.0	35.0	20.0	K28-35-20	24000	34000	14.0	35 g
28.0	35.0	27.0	K28-35-27	34500	54500	14.0	47 g
28.0	36.0	16.0	K28-36-16	34000	47000	11.0	40 g
28.0	40.0	18.0	K28-40-18	33000	36500	12.0	50 g
28.0	40.0	25.0	K28-40-25	45000	54500	12.0	71 g
30.0	34.0	13.0	K30-34-13	11800	21200	13.0	14 g
30.0	35.0	13.0	K30-35-13	11500	25000	13.0	16 g
30.0	35.0	17.0	K30-35-17	19100	33500	13.0	21 g
30.0	35.0	27.0	K30-35-27	30000	58500	13.0	33 g
30.0	37.0	16.0	K30-37-16	22500	33000	13.0	26 g
30.0	38.0	25.0	K30-38-25	16000	39000	13.0	43 g
30.0	40.0	18.0	K30-40-18	31500	39500	12.0	44 g
30.0	40.0	30.0	K30-40-30	48500	68500	13.0	78 g
30.0	35.0	26.0	K30-35-26	23500	43500	12.0	32 g
32.0	37.0	13.0	K32-37-13	15000	25000	12.0	18 g
32.0	37.0	17.0	K32-37-17	19400	35000	12.0	22 g
32.0	37.0	27.0	K32-37-27	29500	59500	12.0	36 g
32.0	37.0	28.0	K32-37-28 TN	23100	43000	12.0	22 g

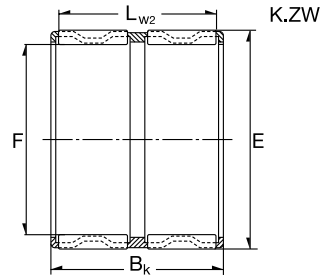
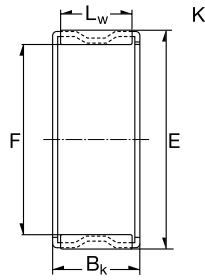
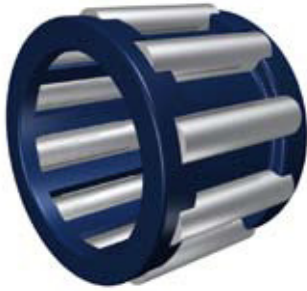
K Nadelkränze / K Needle Roller Bearing



8

Dimension (mm)			Designation/Type	*Basic Load Rating		*LimitingSpeed x1000rpm Oil	Mass (g) approx.
F	E	BK		C	Co		
32.0	38.0	16.0	K32-38-16	21000	34000	12.0	25 g
32.0	38.0	20.0	K32-38-20	26000	44500	12.0	31 g
32.0	38.0	26.0	K32-38-26 TN	27000	46500	12.0	25 g
32.0	39.0	16.0	K32-39-16	23500	35000	12.0	36 g
32.0	39.0	18.0	K32-39-18	26000	40500	12.0	37 g
32.0	40.0	20.0	K32-40-20	37000	40500	12.0	48 g
32.0	40.0	36.0	K32-40-36	53500	91500	12.0	73 g
32.0	46.0	32.0	K32-46-32	65500	82500	11.0	119 g
32.0	40.0	42.0	K32-40-42 TN	49500	83500	12.0	77 g
35.0	40.0	13.0	K35-40-13	15800	27500	11.0	18 g
35.0	40.0	17.0	K35-40-17	20300	38000	11.0	25 g
35.0	40.0	25.0	K35-40-25	29000	59500	11.0	31 g
35.0	40.0	27.0	K35-40-27 TN	24500	48000	11.0	23 g
35.0	40.0	27.0	K35-40-27	27800	62100	11.0	28 g
35.0	40.0	30.0	K35-40-30	25000	49500	11.0	43 g
35.0	42.0	16.0	K35-42-16	23900	37000	11.0	34 g
35.0	42.0	18.0	K35-42-18	27000	42500	11.0	39 g
35.0	42.0	30.0	K35-42-30	38500	67500	11.0	62 g
35.0	43.0	18.0	K35-43-18	28000	41500	11.0	38 g
35.0	45.0	20.0	K35-45-20	36500	49500	10.0	55 g
35.0	45.0	30.0	K35-45-30	52500	78500	10.0	80 g
35.0	45.0	49.0	K35-45-49	81500	13400	10.0	120 g
35.0	40.0	30.0	K35-40-30	31500	65500	11.0	48 g
35.0	42.0	20.0	K35-42-20	29500	48500	11.0	41 g
36.0	41.0	30.0	K36-41-30	23000	43000	11.0	52 g
36.0	42.0	16.0	K36-42-16	24000	42000	11.0	50 g
37.0	42.0	17.0	K37-42-17	21900	42500	10.0	25 g
37.0	42.0	27.0	K37-42-27	31500	67500	10.0	40 g
37.0	45.0	26.0	K37-45-26	43500	73500	10.0	60 g
38.0	43.0	17.0	K38-43-17	20000	38000	10.0	26 g

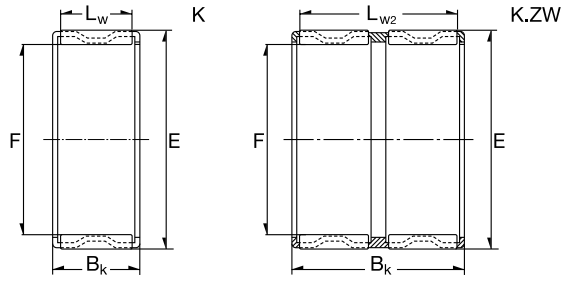
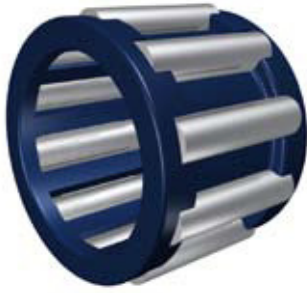
K Nadelkränze / K Needle Roller Bearing



9

Dimension (mm)			Designation/Type	*Basic Load Rating		*LimitingSpeed x1000rpm Oil	Mass (g) approx.
F	E	BK		C	Co		
38.0	43.0	27.0	K38-43-27	31000	67500	10.0	43 g
38.0	46.0	20.0	K38-46-20	35000	56500	10.0	46 g
38.0	46.0	32.0	K38-46-32	54500	98500	10.0	72 g
39.0	44.0	24.0	K39-44-24	28000	58500	10.0	38 g
39.0	44.0	26.0	K39-44-26	27000	55500	10.0	29 g
40.0	44.0	13.0	K40-44-13	13500	28000	10.0	20 g
40.0	45.0	13.0	K40-45-13	17100	32000	10.0	21 g
40.0	45.0	17.0	K40-45-17	20900	41000	10.0	27 g
40.0	45.0	21.0	K40-45-21	24400	49500	10.0	36 g
40.0	45.0	27.0	K40-45-27	32500	72500	10.0	46 g
40.0	46.0	17.0	K40-46-17	24500	44500	9.0	30 g
40.0	47.0	18.0	K40-47-18	29000	49500	9.0	45 g
40.0	47.0	20.0	K40-47-20	32000	56500	9.0	42 g
40.0	48.0	20.0	K40-48-20	35500	58500	9.0	57 g
40.0	45.0	30.0	K40-45-30	26000	53500	9.0	48 g
42.0	47.0	13.0	K42-47-13	17300	33000	9.0	22 g
42.0	47.0	17.0	K42-47-17	21100	42500	9.0	31 g
42.0	47.0	25.0	K42-47-25 TN	27000	57500	9.0	25 g
42.0	47.0	27.0	K42-47-27	33000	74500	9.0	46 g
42.0	48.0	35.0	K42-48-35	35000	76000	9.0	60 g
42.0	50.0	18.0	K42-50-18	31000	49500	9.0	53 g
42.0	50.0	20.0	K42-50-20	34500	56500	9.0	54 g
42.0	47.0	30.0	K42-47-30	31000	75500	9.0	54 g
43.0	48.0	17.0	K43-48-17	21000	42500	9.0	29 g
43.0	48.0	27.0	K43-48-27	33000	74500	9.0	45 g
43.0	50.0	18.0	K43-50-18	30500	53500	9.0	48 g
45.0	49.0	19.0	K45-49-19	17500	40000	8.0	27 g
45.0	50.0	17.0	K45-50-17	22000	45000	8.0	25 g
45.0	50.0	27.0	K45-50-27	34000	79500	8.0	50 g
45.0	50.0	32.0	K45-50-32 TN	38000	90500	8.0	45 g

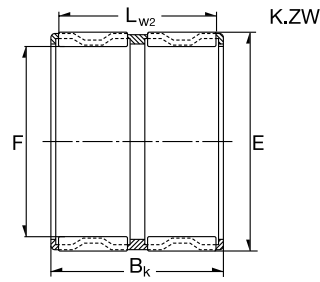
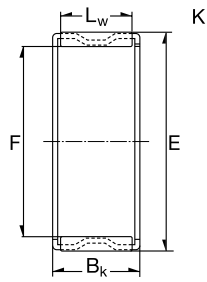
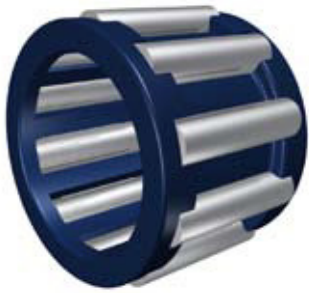
K Nadelkränze / K Needle Roller Bearing



10

Dimension (mm)			Designation/Type	*Basic Load Rating		*LimitingSpeed x1000rpm Oil	Mass (g) approx.
F	E	BK		C	Co		
45.0	52.0	18.0	K45-52-18	31000	56500	8.0	51 g
45.0	52.0	21.0	K45-52-21 TN	39500	57500	8.0	32 g
45.0	53.0	20.0	K45-53-20	38500	66500	8.0	62 g
45.0	53.0	21.0	K45-53-21	38000	66500	8.0	65 g
45.0	53.0	22.0	K45-53-22	42000	66500	8.0	68 g
45.0	53.0	28.0	K45-53-28	51500	97500	8.0	78 g
45.0	59.0	18.0	K45-59-18 TN	43500	53500	7.0	60 g
45.0	59.0	32.0	K45-59-32	72500	101500	7.0	145 g
45.0	59.0	36.0	K45-59-36	75500	108500	7.0	195 g
45.0	51.0	36.0	K45-51-36	44500	98500	7.0	85 g
47.0	52.0	17.0	K47-52-17	22800	48500	8.0	32 g
47.0	52.0	27.0	K47-52-27	34500	82500	8.0	50 g
47.0	53.0	25.0	K47-53-25	38000	81500	8.0	53 g
47.0	55.0	28.0	K47-55-28	52500	99500	7.5	62 g
48.0	54.0	19.0	K48-54-19	30000	60500	7.5	44 g
48.0	54.0	25.0	K48-54-25	31000	91000	7.5	55 g
50.0	55.0	13.5	K50-55-13.5	17500	36000	7.5	31 g
50.0	55.0	17.0	K50-55-17	21400	46500	7.5	35 g
50.0	55.0	20.0	K50-55-20	26000	59500	7.5	39 g
50.0	55.0	30.0	K50-55-30	38500	96500	7.5	59 g
50.0	57.0	18.0	K50-57-18	33000	62500	7.0	53 g
50.0	58.0	20.0	K50-58-20	35000	61500	7.0	64 g
50.0	58.0	25.0	K50-58-25	43500	80500	7.0	81 g
52.0	57.0	12.0	K52-57-12	17500	36000	7.0	24 g
55.0	60.0	20.0	K55-60-20	28000	65500	6.5	43 g
55.0	60.0	27.0	K55-60-27	37500	96500	6.5	60 g
55.0	60.0	30.0	K55-60-30	40500	10300	6.5	68 g
55.0	61.0	20.0	K55-61-20	41000	11000	6.5	56 g
55.0	62.0	18.0	K55-62-18	35000	68500	6.5	58 g
55.0	63.0	15.0	K55-63-15	24500	40500	6.5	53 g

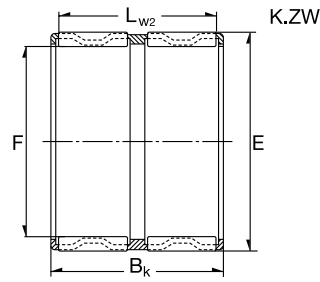
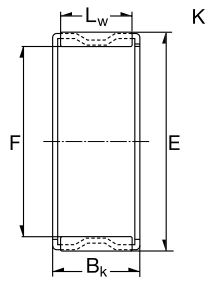
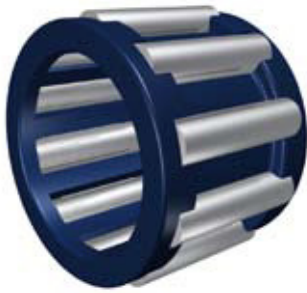
K Nadelkränze / K Needle Roller Bearing



11

Dimension (mm)			Designation/Type	*Basic Load Rating		*LimitingSpeed x1000rpm Oil	Mass (g) approx.
F	E	BK		C	Co		
55.0	63.0	20.0	K55-63-20	39500	79500	6.5	73 g
55.0	63.0	25.0	K55-63-25	49500	99500	6.5	88 g
55.0	63.0	32.0	K55-63-32	61500	129500	6.5	117 g
55.0	60.0	40.0	K55-60-40	48000	132000	6.5	96 g
56.0	61.0	20.0	K56-61-20	27000	64500	6.5	45 g
58.0	63.0	17.0	K58-63-17	21500	63500	6.0	42 g
58.0	64.0	19.0	K58-64-19	24500	77500	6.0	53 g
58.0	65.0	18.0	K58-65-18	34500	69500	6.0	52 g
58.0	65.0	38.0	K58-65-38	48500	106500	6.0	106 g
60.0	65.0	20.0	K60-65-20	29000	71500	6.0	50 g
60.0	65.0	30.0	K60-65-30	42000	115500	6.0	71 g
60.0	68.0	20.0	K60-68-20	43000	84500	5.5	79 g
60.0	68.0	23.0	K60-68-23	49000	100500	5.5	94 g
60.0	68.0	25.0	K60-68-25	52500	110500	5.5	97 g
60.0	68.0	27.0	K60-68-27	59000	120500	6.0	98 g
60.0	75.0	42.0	K60-75-42	11300	19200	5.5	240 g
60.0	66.0	33.0	K60-66-33	45500	111500	6.0	104 g
60.0	66.0	40.0	K60-66-40	57500	150500	5.5	116 g
60.0	68.0	30.0	K60-68-30	44000	87500	5.5	136 g
60.0	68.0	34.0	K60-68-34	47500	95500	5.5	140 g
62.0	70.0	40.0	K62-70-40	65500	145500	5.5	147 g
63.0	70.0	21.0	K63-70-21	45000	100500	5.5	75 g
64.0	70.0	16.0	K64-70-16	27500	59500	5.5	53 g
65.0	70.0	20.0	K65-70-20	30000	76500	5.5	49 g
65.0	70.0	30.0	K65-70-30	43500	123500	5.5	83 g
65.0	73.0	23.0	K65-73-23	45500	93500	5.5	100 g
65.0	73.0	30.0	K65-73-30	56500	122500	5.5	126 g
68.0	74.0	20.0	K68-74-20	35000	83500	5.5	65 g
68.0	74.0	30.0	K68-74-30	46000	117500	5.5	97 g
68.0	74.0	35.0	K68-74-35	48000	124500	5.5	116 g

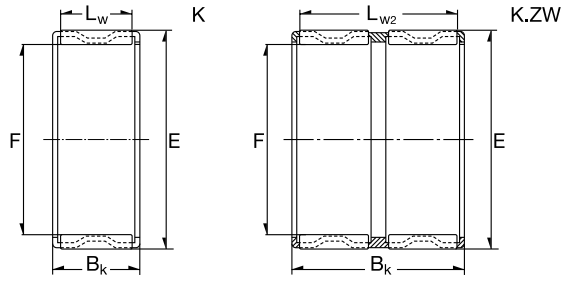
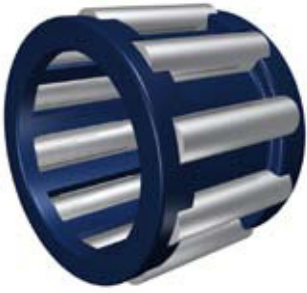
K Nadelkränze / K Needle Roller Bearing



12

Dimension (mm)			Designation/Type	*Basic Load Rating		*LimitingSpeed x1000rpm Oil	Mass (g) approx.
F	E	BK		C	Co		
68.0	75.0	32.0	K68-75-32	53500	127500	4.5	120 g
70.0	76.0	20.0	K70-76-20	35500	85500	4.5	70 g
70.0	76.0	30.0	K70-76-30	51500	138500	4.5	100 g
70.0	78.0	25.0	K70-78-25	51500	111500	4.5	115 g
70.0	78.0	30.0	K70-78-30	59500	134500	4.5	136 g
70.0	80.0	30.0	K70-80-30	72500	147500	4.5	150 g
70.0	78.0	46.0	K70-78-46	77500	18800	4.5	230 g
72.0	80.0	20.0	K72-80-20	41000	84500	4.5	94 g
73.0	79.0	20.0	K73-79-20	36500	99500	4.5	69 g
75.0	81.0	20.0	K75-81-20	37000	93500	4.5	72 g
75.0	81.0	30.0	K75-81-30	51500	142000	4.5	106 g
75.0	83.0	23.0	K75-83-23	49500	108000	4.0	113 g
75.0	83.0	30.0	K75-83-30	61500	142000	4.0	174 g
75.0	83.0	35.0	K75-83-35	62500	146500	4.0	165 g
75.0	83.0	40.0	K75-83-40	72500	176500	4.0	190 g
80.0	86.0	20.0	K80-86-20	38000	97500	4.0	76 g
80.0	86.0	30.0	K80-86-30	55500	158500	4.0	114 g
80.0	88.0	30.0	K80-88-30	71500	178500	4.0	141 g
80.0	88.0	40.0	K80-88-40	75500	191500	4.0	204 g
80.0	88.0	46.0	K80-88-46	87500	23000	4.0	235 g
85.0	92.0	20.0	K85-92-20	44000	107500	3.5	96 g
90.0	87.0	20.0	K90-97-20	44500	112500	3.0	103 g
90.0	98.0	27.0	K90-98-27	60500	149500	3.0	150 g
90.0	98.0	30.0	K90-98-30	67500	171500	3.0	172 g
95.0	102.0	20.0	K95-102-20	45500	122500	2.9	110 g
95.0	103.0	30.0	K95-103-30	68500	179500	2.9	177 g
95.0	103.0	40.0	K95-103-40	82500	227500	2.9	250 g
100.0	107.0	21.0	K100-107-21	47500	126500	2.7	120 g
100.0	108.0	27.0	K100-108-27	56500	142500	2.7	176 g
100.0	108.0	30.0	K100-108-30	70500	187500	2.7	190 g

K Nadelkränze / K Needle Roller Bearing



13

Dimension (mm)			Designation/Type	*Basic Load Rating		*LimitingSpeed x1000rpm Oil	Mass (g) approx.
F	E	BK		C	Co		
105.0	112.0	21.0	K105-112-21	47000	126500	2.5	123 g
105.0	113.0	30.0	K105-113-30	71500	196500	2.5	198 g
110.0	117.0	24.0	K110-117-24	55500	157500	2.3	146 g
110.0	118.0	30.0	K110-118-30	77500	218500	2.3	217 g

www.zen.biz

Alle Rechte vorbehalten, kein Teil des Katalogs darf in irgendeiner Form (Druck, Fotokopie, Mikrofilm oder in einem anderen Verfahren) ohne Genehmigung reproduziert oder unter Verwendung elektronischer Systeme verarbeitet, vervielfältigt oder verbreitet werden.

Copyright reserved. No part of the catalogue is to be copied, extracted or modified without explicit permission from the copyright holder.

v.10 / 12



Bearings for your future