

ZON™

BEARINGS FOR YOUR FUTURE



Gehäuse und Einsätze / Housings and Inserts





BEARINGS FOR YOUR FUTURE

Zen Ball Bearings are manufactured to the highest quality for standard and non-standard applications. Our technical department can modify any non-standard bearings to your specific requirements, regardless of quantity.

Apart from our extensive miniature ball bearing range of more than 1000 different types, ranging from 1-10 mm bore (Including inch dimensions), our range also includes Thin section, Three part thrust, Popular metric and any kind of non standard bearing. We are able to design bearings according to your requirements using new materials like ceramic or special steels for applications in Industry, Medicine, Chemistry and Food Processing.

Our technical department can modify any non-standard bearings to your specific requirements, even for small quantities.

For any items not listed in our catalogue, please contact our experienced sales team.



Zen Ball Bearings Shanghai has been awarded the German ISO TUV Rheinland certification for inspection of ZEN products.

This certification is the highest standard a business in our industry can achieve. It is internationally recognised as a guarantee of quality, customer focus and continual improvement.

www.zen.biz



Gehäuse und Einsätze Housings and Inserts



Wetterbeständig*^▼
Outdoor durability*^▼



Geeignet für niedrige temperaturen*^▼
Suitable for low temperatures*^▼



Geeignet für hohe temperaturen*^
Suitable for high temperatures*^



Lösungsmittelresistent*^▼
Chemical solvent resistant*^▼



Geeignet für hohe tragzahlen*^
Suitable for heavy load rating*^



Ölschmierung*
Oil lubrication*



Fettschmierung*
Grease lubrication*



Gummidichtscheiben verfügbar*
Rubber seal option available*



Metalldeckscheiben
verfügbar*
Metal shield option available*

* Stainless Steel Inserts

^ Thermoplastic Pillow Blocks

▼ Stainless Steel Pillow Blocks

Produktfokus / Product focus

Sonderbefettungen Special Lubricants



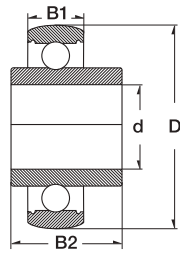
- ✓ Wasserfest oder - abweisend
Water resistant
- ✓ Für hohe Temperaturen
High temperature
- ✓ Für niedrige Temperaturen
Low temperature
- ✓ Zertifizierte lebensmittelbefettung
FDA Approved



Die Lebensdauer eines Wälzlagers hängt entscheidend von der dem Einsatzzweck angemessenen Befettung ab. ZEN verwendet nur hochwertige, ausgesuchte Schmierstoffe. So werden Reibung und Korrosion sowohl bei hohen als auch bei niedrigen Temperaturen verhindert. Weitergehende Informationen erhalten Sie von Ihrer autorisierten ZEN-Vertretung.

To maintain the performance of any bearing, proper lubrication is essential. Zen have selected the best lubricants to reduce friction, prevent wear, protect bearing surfaces from corrosion and perform in high and low temperatures. For more information please contact your authorized ZEN distributor.

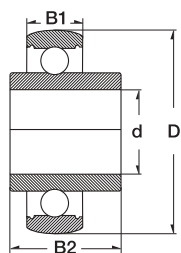
Rostfreie Gehäuselager-Einsätze / Stainless Steel Inserts



4

Dimension (inch)	Dimension (mm)				Designation/Type	* Load Rating	
	d	D	B1	B2		C, dyn. N	C, stat. N
	12.00	47.00	17.00	31.00	SUC 201	7500	4500
1/2	12.70	47.00	17.00	31.00	SUC 201-8	7500	4500
	15.00	47.00	17.00	31.00	SUC 202	7500	4500
5/8	15.87	47.00	17.00	31.00	SUC 202-10	7500	4500
	17.00	47.00	17.00	31.00	SUC 203	7500	4500
11/16	17.46	47.00	17.00	31.00	SUC 203-11	7500	4500
	20.00	47.00	17.00	31.00	SUC 204	10000	6300
3/4	19.05	47.00	17.00	31.00	SUC 204-12	10000	6300
	25.00	52.00	17.00	34.10	SUC 205	11000	7100
1	25.40	52.00	17.00	34.10	SUC 205-16	11000	7100
	30.00	62.00	19.00	38.10	SUC 206	15200	10200
1 1/4	31.75	62.00	19.00	38.10	SUC 206-20	15200	10200
	35.00	72.00	20.00	42.90	SUC 207	20100	18100
1 1/4	31.75	72.00	20.00	42.90	SUC 207-20	20100	18100
	40.00	80.00	21.00	49.20	SUC 208	23000	18100
1 1/2	38.10	80.00	21.00	49.20	SUC 208-24	23000	18100
	45.00	85.00	22.00	49.20	SUC 209	25600	18100
1 5/8	41.28	85.00	22.00	49.20	SUC 209-26	25600	18100
1 3/4	44.45	85.00	22.00	49.20	SUC 209-28	25600	18100
	50.00	90.00	23.00	51.60	SUC 210	27500	20200
2	50.80	90.00	23.00	51.60	SUC 210-32	27500	20200
	55.00	100.00	25.00	55.60	SUC 211	33500	29200
2	50.80	100.00	25.00	55.60	SUC 211-32	33500	29200
	60.00	110.00	27.00	65.10	SUC 212	36800	32800
	65.00	120.00	28.00	65.10	SUC213	57500	40000

Rostfreie Gehäuselager-Einsätze / Stainless Steel Inserts

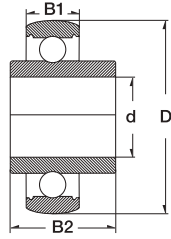


5

Dimension (inch)	Dimension (mm)				Designation/Type	* Load Rating	
	d	D	B1	B2		C, dyn. N	C, stat. N
2	70.00	125.00	29.00	74.60	SUC214	60800	45000
	75.00	130.00	32.00	77.80	SUC215	50890	41000
	80.00	140.00	33.00	82.60	SUC216	55890	44620
	90.00	160.00	37.00	96.00	SUC218	74000	60500
	65.00	120.00	28.00	65.10	SUC213	57500	40000
	70.00	125.00	29.00	74.60	SUC214	60800	45000
	75.00	130.00	32.00	77.80	SUC215	50890	41000
	80.00	140.00	33.00	82.60	SUC216	55890	44620
	90.00	160.00	37.00	96.00	SUC218	74000	60500

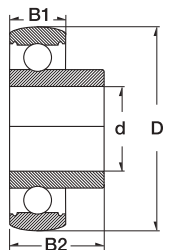
Rostfreie Gehäuselager-Einsätze für hohe Tragzahlen

High Load Stainless Steel Inserts



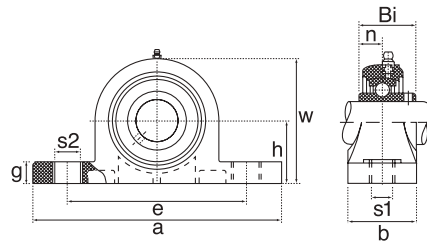
6

Dimension (mm)				Designation/Type	* Load Rating	
d	D	B1	B2		C, dyn. N	C, stat. N
20.0	52.0	17.0	34.1	SUCX04	13900	7800
25.0	62.0	19.0	38.1	SUCX05	15400	10200
30.0	72.0	20.0	42.9	SUCX06	20300	14000
35.0	80.0	21.0	49.2	SUCX07	23000	16000
40.0	85.0	22.0	49.2	SUCX08	25600	18100
45.0	90.0	24.0	51.6	SUCX09	27500	20200
50.0	100.0	25.0	55.6	SUCX10	34000	25500



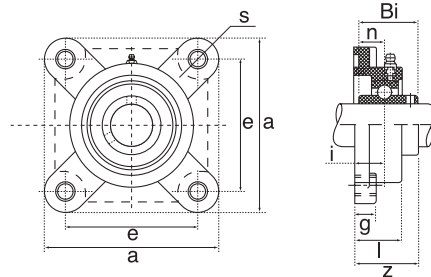
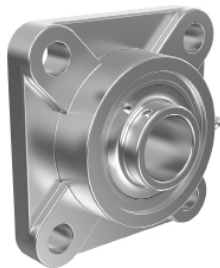
Dimension (mm)				Designation/Type	* Load Rating	
d	D	B1	B2		C, dyn. N	C, stat. N
15.00	40.00	12.00	22.00	SSB 202	7820	3580
17.00	40.00	12.00	22.00	SSB 203	7820	3580
20.00	47.00	14.00	25.00	SSB 204	10370	5040
25.00	52.00	15.00	27.00	SSB 205	11310	5970
30.00	62.00	16.00	30.00	SSB 206	15730	8640
35.00	72.00	17.00	32.00	SSB 207	20830	11680
40.00	80.00	18.00	34.00	SSB 208	23550	13600
45.00	85.00	19.00	41.20	SSB 209	26440	19560
50.00	90.00	20.00	43.50	SSB 210	30010	22530

Rostfreie Gehäuse / Stainless Steel Pillow Blocks



7

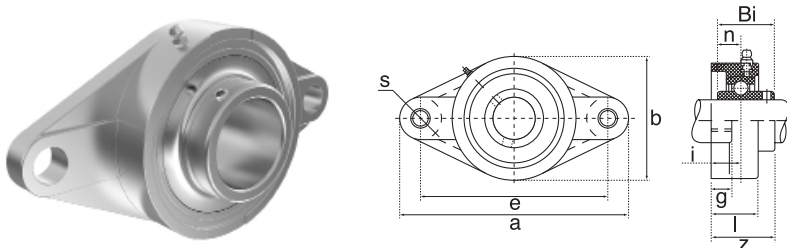
Ref. Type	d	h	a	e	b	S1	S2	g	w	Weight (kg)	Bearing No.
SP201	20.0	33.3	125.0	95.0	37.0	13.0	19.0	14.0	63.5	0.69 kg	SUC201
SP202	20.0	33.3	125.0	95.0	37.0	13.0	19.0	14.0	63.5	0.69 kg	SUC202
SP203	20.0	33.3	125.0	95.0	37.0	13.0	19.0	14.0	63.5	0.69 kg	SUC203
SP204	20.0	33.3	125.0	95.0	37.0	13.0	19.0	14.0	63.5	0.69 kg	SUC204
SP205	25.0	36.5	140.0	105.0	37.0	13.0	19.0	15.0	71.0	0.74 kg	SUC205
SP206	30.0	42.9	163.0	121.0	48.0	17.0	20.0	17.0	82.0	1.29 kg	SUC206
SP207	35.0	47.6	167.0	127.0	48.0	17.0	20.0	18.0	93.0	1.42 kg	SUC207
SP208	40.0	49.2	184.0	137.0	54.0	17.0	20.0	18.0	100.0	1.82 kg	SUC208
SP209	45.0	54	190.0	146.0	54.0	17.0	20.0	20.0	106.0	2.09 kg	SUC209
SP210	50.0	57.2	206.0	159.0	60.0	20.0	23.0	21.0	113.0	2.38 kg	SUC210
SP211	55.0	63.5	219.0	171.0	60.0	20.0	23.0	23.0	125.0	2.55 kg	SUC211
SP212	60.0	69.8	241.0	184.0	70.0	20.0	23.0	25.0	138.0	3.40 kg	SUC212



Ref Type	d	a	e	i	l	g	s	z	Weight Kg	Bearing No.
SF201	20.0	86.0	63.5	15.1	25.4	12.0	12.0	33.3	0.47 kg	SUC201
SF202	20.0	86.0	63.5	15.1	25.4	12.0	12.0	33.3	0.47 kg	SUC202
SF203	20.0	86.0	63.5	15.1	25.4	12.0	12.0	33.3	0.47 kg	SUC203
SF204	20.0	86.0	63.5	15.1	25.4	12.0	12.0	33.3	0.47 kg	SUC204
SF205	25.0	95.0	70.0	15.9	27.0	14.0	12.0	35.8	0.65 kg	SUC205
SF206	30.0	108.0	82.5	17.9	30.0	14.0	12.0	40.2	0.85 kg	SUC206
SF207	35.0	117.0	92.0	19.1	33.0	16.0	14.0	44.4	1.03 kg	SUC207
SF208	40.0	130.0	101.6	21.0	36.0	16.0	16.0	51.2	1.38 kg	SUC208
SF209	45.0	137.0	104.8	21.8	37.0	16.0	16.0	52.2	1.50 kg	SUC209
SF210	50.0	143.0	111.0	21.8	38.0	18.0	16.0	54.6	1.63 kg	SUC210
SF211	55.0	162.0	130.0	25.0	43.0	20.0	19.0	58.4	3.25 kg	SUC211
SF212	60.0	175.0	143.0	29.0	48.0	20.0	19.0	68.7	4.20 kg	SUC212

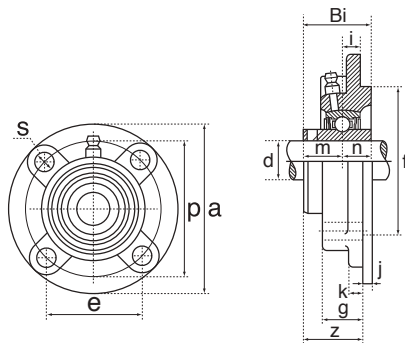
Dimensions are accurate at the time of document creation but may vary

Rostfreie Gehäuse / Stainless Steel Pillow Blocks



8

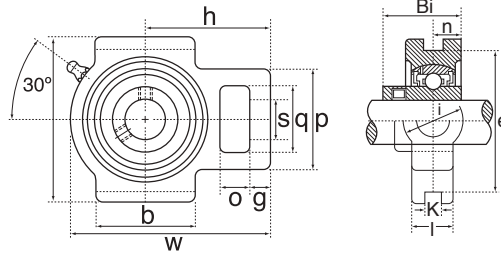
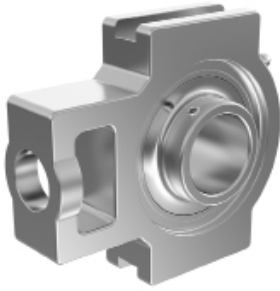
Ref Type	a	e	i	b	l	g	s	Weight Kg	Bearing No.
SFL201	113.0	90.0	15.0	60.0	25.5	11.0	12.0	0.32 kg	SUC201
SFL202	113.0	90.0	15.0	60.0	25.5	11.0	12.0	0.32 kg	SUC202
SFL203	113.0	90.0	15.0	60.0	25.5	11.0	12.0	0.32 kg	SUC203
SFL204	113.0	90.0	15.0	60.0	25.5	11.0	12.0	0.32 kg	SUC204
SFL205	130.0	99.0	16.0	68.0	27.0	13.0	16.0	0.44 kg	SUC205
SFL206	148.0	117.0	18.0	80.0	31.0	13.0	16.0	0.58 kg	SUC206
SFL207	161.0	130.0	19.0	90.0	34.0	14.0	16.0	0.74 kg	SUC207
SFL208	175.0	144.0	21.0	100.0	36.0	14.0	16.0	0.99 kg	SUC208
SFL209	188.0	148.0	22.0	108.0	38.0	15.0	19.0	1.16 kg	SUC209
SFL210	197.0	157.0	22.0	114.6	40.0	15.0	19.0	1.36 kg	SUC210
SFL211	224.0	184.0	25.0	130.0	43.0	18.0	19.0	2.20 kg	SUC211
SFL212	250.0	202.0	29.0	138.5	48.0	18.0	23.0	2.65 kg	SUC212



Ref Type	d	a	p	e	i	s	j	k	g	f	z	Bi	n	Weight Kg	Bearing No.
SFC201	12.0	100.0	78.0	55.1	10.0	12.0	5.0	7.0	20.5	62.0	28.3	31.0	12.7	0.72 kg	SUC201
SFC202	15.0	100.0	78.0	55.1	10.0	12.0	5.0	7.0	20.5	62.0	28.3	31.0	12.7	0.72 kg	SUC202
SFC203	17.0	100.0	78.0	55.1	10.0	12.0	5.0	7.0	20.5	62.0	28.3	31.0	12.7	0.72 kg	SUC203
SFC204	20.0	100.0	78.0	55.1	10.0	12.0	5.0	7.0	20.5	62.0	28.3	31.0	12.7	0.72 kg	SUC204
SFC205	25.0	115.0	90.0	63.6	10.0	12.0	6.0	7.0	21.0	70.0	29.8	34.1	14.3	0.98 kg	SUC205
SFC206	30.0	125.0	100.0	70.7	10.0	12.0	8.0	8.0	23.0	80.0	32.2	38.1	15.9	1.3 kg	SUC206
SFC207	35.0	135.0	110.0	77.8	11.0	14.0	8.0	9.0	26.0	90.0	36.4	42.9	17.5	1.8 kg	SUC207
SFC208	40.0	145.0	120.0	84.8	11.0	14.0	10.0	9.0	26.0	100.0	41.2	42.9	19	2.0 kg	SUC208
SFC209	45.0	158.7	132.0	93.3	10.0	16.0	12.0	14.0	26.0	105.0	40.2	49.2	19	2.9 kg	SUC209
SFC210	50.0	163.0	138.0	97.6	10.0	16.0	12.0	14.0	28.0	110.0	42.6	51.6	19	2.9 kg	SUC210
SFC211	55.0	185.0	150.0	106.1	13.0	19.0	12.0	15.0	31.0	125.0	46.4	55.6	22.2	4.5 kg	SUC211
SFC212	60.0	193.5	160.0	113.1	17.0	19.0	12.0	15.0	36.0	135.0	56.7	65.1	25.4	5.1 kg	SUC212

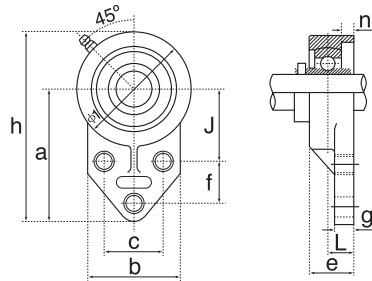
Dimensions are accurate at the time of document creation but may vary

Rostfreie Gehäuse / Stainless Steel Pillow Blocks



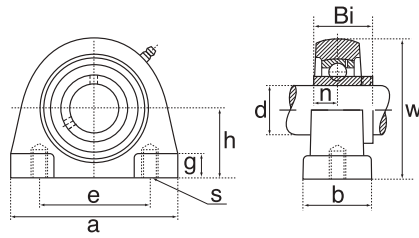
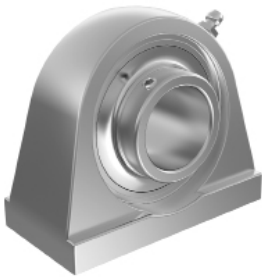
9

Ref Type	o	g	p	q	s	b	k	e	a	w	j	l	h	Bi	n	Weight Kg	Bearing No.
ST201	16.0	10.0	51.0	32.0	19.0	51.0	12.0	76.0	89.0	94.0	32.0	21.0	61.0	31.0	12.7	0.73 kg	SUC201
ST202	16.0	10.0	51.0	32.0	19.0	51.0	12.0	76.0	89.0	97.0	32.0	24.0	62.0	34.1	14.3	0.73 kg	SUC202
ST203	16.0	10.0	56.0	37.0	22.0	57.0	12.0	89.0	102.0	113.0	37.0	28.0	70.0	38.1	15.9	0.73 kg	SUC203
ST204	16.0	13.0	64.0	37.0	22.0	64.0	12.0	89.0	102.0	129.0	37.0	30.0	78.0	42.9	17.5	0.73 kg	SUC204
ST205	19.0	16.0	83.0	49.0	29.0	83.0	16.0	102.0	114.0	144.0	49.0	33.0	88.0	49.2	19.0	0.8 kg	SUC205
ST206	19.0	16.0	83.0	49.0	29.0	83.0	16.0	102.0	117.0	144.0	49.0	35.0	87.0	49.2	19.0	1.15 kg	SUC206
ST207	19.0	16.0	83.0	49.0	29.0	86.0	16.0	102.0	117.0	149.0	49.0	37.0	90.0	51.6	19.0	1.35 kg	SUC207
ST208	25.0	19.0	102.0	64.0	35.0	95.0	22.0	130.0	146.0	171.0	64.0	38.0	106.0	55.6	22.2	2.05 kg	SUC208
ST209	32.0	19.0	102.0	64.0	35.0	102.0	22.0	130.0	146.0	194.0	64.0	42.0	119.0	65.1	25.4	2.1 kg	SUC209
ST210	19.0	16.0	83.0	49.0	29.0	86.0	16.0	102.0	117.0	149.0	49.0	37.0	90.0	51.6	19.0	2.1 kg	SUC210
ST211	25.0	19.0	102.0	64.0	35.0	95.0	22.0	130.0	146.0	171.0	64.0	38.0	106.0	55.6	22.2	3.1 kg	SUC211
ST212	32.0	19.0	102.0	64.0	35.0	102.0	22.0	130.0	146.0	194.0	64.0	42.0	119.0	65.1	25.4	3.6 kg	SUC212



Ref Type	J	h	c	f	L	g	e	a	s	b	Weight Kg	Bearing No.
SFB204	42.9	108.0	38.1	22.0	15.9	8.0	25.4	52.0	10.0	60.3	0.39 kg	SUC204
SFB205	46.0	121.0	41.3	28.5	16.7	9.5	28.5	52.0	10.0	63.5	0.54 kg	SUC205
SFB206	52.4	137.0	47.6	31.7	18.6	9.5	32.0	55.0	10.0	70.0	0.77 kg	SUC206
SFB207	60.3	156.0	50.8	31.7	21.0	12.7	36.5	62.0	13.0	83.0	1.16 kg	SUC207
SFB208	60.0	164.0	50.0	41.3	21.0	15.9	35.7	72.0	11.0	78.0	1.65 kg	SUC208
SFB209	65.0	174.0	54.0	42.9	21.8	18.3	38.0	76.0	11.0	80.0	1.91 kg	SUC209
SFB210	74.6	190.0	69.9	41.3	21.8	12.7	38.0	82.0	13.0	102.0	2.34 kg	SUC210

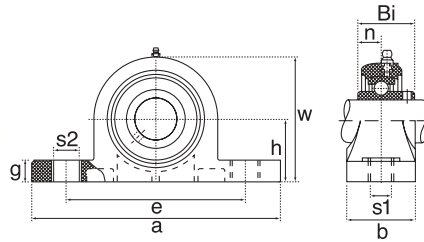
Rostfreie Gehäuse / Stainless Steel Pillow Blocks



10

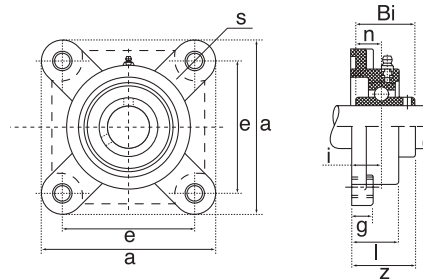
Housing No.	d	h	a	e	b	g	s	w	Bi	n	Weight Kg	Bearing No.
SPA201	12.0	30.2	72.6	52.0	38.0	15.0	M10	64.0	31.0	12.7	0.57 kg	SUC201
SPA202	15.0	30.2	72.6	52.0	38.0	15.0	M10	64.0	31.0	12.7	0.57 kg	SUC202
SPA203	17.0	30.2	72.6	52.0	38.0	15.0	M10	64.0	31.0	12.7	0.57 kg	SUC203
SPA204	20.0	30.2	72.6	52.0	38.0	15.0	M10	64.0	31.0	12.7	0.57 kg	SUC204
SPA205	25.0	36.5	84.0	56.0	38.0	15.0	M10	72.0	34.1	14.3	0.67 kg	SUC205
SPA206	30.0	42.9	94.0	66.0	48.0	18.0	M14	84.0	38.1	15.9	0.80 kg	SUC206
SPA207	35.0	47.9	110.0	80.0	48.0	20.0	M14	95.0	42.9	17.5	1.38 kg	SUC207
SPA208	40.0	49.2	116.0	84.0	54.0	20.0	M14	100.0	49.2	19.0	1.75 kg	SUC208
SPA209	45.0	54.2	120.0	90.0	54.0	25.0	M14	108.0	49.2	19.0	1.80 kg	SUC209
SPA210	50.0	57.2	130.0	94.0	60.0	25.0	M16	116.0	51.6	19.0	2.40 kg	SUC210
SPA211	55.0	63.5	140.0	104.0	66.0	25.0	M16	125.0	55.6	22.2	2.80 kg	SUC211
SPA212	60.0	69.9	150.0	114.0	68.0	25.0	M16	138.0	65.1	25.4	3.70 kg	SUC212

Thermoplastische Gehäuse / Thermoplastic Pillow Blocks



11

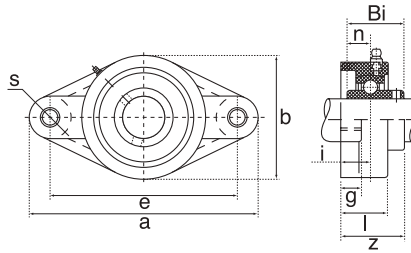
Ref Type	h	a	e	b	s1	s2	g	w	Bi	n	Weight Kg	Bearing No.
TP201	33.3	127.0	95.0	38.0	11.0	14.0	14.2	65.6	31.0	12.7	0.12 kg	SUC201
TP202	33.3	127.0	95.0	38.0	11.0	14.0	14.2	65.6	31.0	12.7	0.12 kg	SUC202
TP203	33.3	127.0	95.0	38.0	11.0	14.0	14.2	65.6	31.0	12.7	0.12 kg	SUC203
TP204	33.3	127.0	95.0	38.0	11.0	14.0	14.2	65.6	31.0	12.7	0.12 kg	SUC204
TP205	36.5	140.6	105.0	38.0	11.0	14.0	14.5	71.0	34.0	14.3	0.14 kg	SUC205
TP206	42.9	163.0	118.0	46.0	14.0	18.0	17.8	84.0	38.1	15.9	0.20 kg	SUC206
TP207	47.6	168.0	127.0	48.0	14.0	18.0	18.0	94.5	42.9	17.5	0.25 kg	SUC207
TP208	49.2	184.0	137.0	54.0	14.0	18.0	19.5	101.0	49.2	19.0	0.35 kg	SUC208
TP209	54.0	192.0	146.0	54.0	17.0	20.0	23.0	106.0	49.2	19.0	0.45 kg	SUC209
TP210	57.2	206.0	159.0	60.0	17.0	20.0	23.0	114.0	51.6	19.0	0.55 kg	SUC210
TP211	63.5	219.0	171.0	60.0	20.0	23.0	23.0	127.0	55.6	22.2	1.38 kg	SUC211
TP212	69.5	241.0	184.0	70.0	20.0	23.0	25.0	138.0	65.1	25.4	1.52 kg	SUC212



Ref Type	a	e	g	l	s	z	i	Bi	n	Weight Kg	Bearing No.
TF201	86.0	63.5	13.4	27.8	11.0	34.6	18.0	31.0	12.7	0.12 kg	SUC201
TF202	86.0	63.5	13.4	27.8	11.0	34.6	18.0	31.0	12.7	0.12 kg	SUC202
TF203	86.0	63.5	13.4	27.8	11.0	34.6	18.0	31.0	12.7	0.12 kg	SUC203
TF204	86.0	63.5	13.4	27.8	11.0	34.6	18.0	31.0	12.7	0.12 kg	SUC204
TF205	95.0	70.0	14.0	28.0	11.0	36.7	17.0	34.0	14.3	0.15 kg	SUC205
TF206	107.0	83.0	14.3	31.5	11.0	41.2	19.2	38.1	15.9	0.18 kg	SUC206
TF207	118.0	92.0	15.5	34.8	13.0	46.9	21.5	42.9	17.5	0.26 kg	SUC207
TF208	130.0	102.0	17.0	37.5	14.0	53.2	23.0	49.2	19.0	0.33 kg	SUC208
TF209	137.0	105.0	19.0	41.0	17.0	54.2	24.0	49.2	19.0	0.42 kg	SUC209
TF210	143.0	111.0	21.0	43.0	17.0	57.6	25.0	51.6	19.0	0.51 kg	SUC210
TF211	162.0	130.0	20.0	43.0	19.0	58.4	25.0	55.6	22.2	1.40 kg	SUC211
TF212	175.0	143.0	20.0	48.0	19.0	68.7	29.0	65.1	25.4	1.60 kg	SUC212

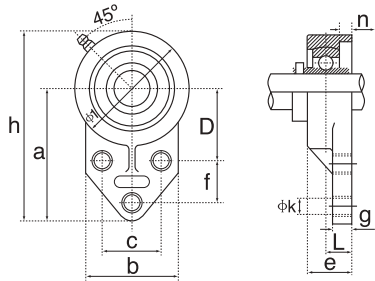
Dimensions are accurate at the time of document creation but may vary

Thermoplastische Gehäuse / Thermoplastic Pillow Blocks



12

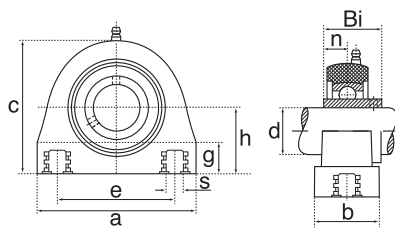
Ref Type	a	e	b	g	l	s	z	i	Bi	n	Weight Kg	Bearing No.
TFL201	113.0	90.0	65.0	13.4	26.5	33.3	33.7	15.4	31.0	12.7	0.08 kg	SUC201
TFL202	113.0	90.0	65.0	13.4	26.5	33.3	33.7	15.4	31.0	12.7	0.08 kg	SUC202
TFL203	113.0	90.0	65.0	13.4	26.5	33.3	33.7	15.4	31.0	12.7	0.08 kg	SUC203
TFL204	113.0	90.0	65.0	13.4	26.5	33.3	33.7	15.4	31.0	12.7	0.08 kg	SUC204
TFL205	134.0	99.0	70.0	14.3	28.0	36.2	36.7	17.0	34.0	14.3	0.10 kg	SUC205
TFL206	148.0	117.0	80.0	14.3	30.5	40.2	41.2	19.0	38.1	15.9	0.13 kg	SUC206
TFL207	164.0	130.0	90.0	15.5	32.0	44.4	43.4	19.0	42.9	17.5	0.16 kg	SUC207
TFL208	176.0	144.0	100.0	17.2	35.0	44.0	51.7	21.5	49.2	19.0	0.24 kg	SUC208
TFL209	188.0	149.0	108.0	21.0	41.0	47.0	54.2	24.0	49.2	19.0	0.32 kg	SUC209
TFL210	197.0	157.0	115.0	21.0	43.0	47.0	57.6	25.0	51.6	19.0	0.42 kg	SUC210
TFL211	226.0	185.0	129.0	20.0	43.0	47.0	58.4	25.0	55.6	22.2	1.40 kg	SUC211
TFL212	250.0	202.0	140.0	20.0	48.0	47.0	68.7	29.0	65.1	25.4	1.60 kg	SUC212



Ref Type	a	b	c	D	e	f	g	h	k	n	Bolt dia	Weight Kg	Bearing No.
FBL201	76.2	62.0	38.1	42.9	33.7	22.2	11.4	108.0	10.7	12.7	M10	0.08 kg	SUC201
FBL202	76.2	62.0	38.1	42.9	33.7	22.2	11.4	108.0	10.7	12.7	M10	0.08 kg	SUC202
FBL203	76.2	62.0	38.1	42.9	33.7	22.2	11.4	108.0	10.7	12.7	M10	0.08 kg	SUC203
FBL204	76.2	62.0	38.1	42.9	33.7	22.2	11.4	108.0	10.7	12.7	M10	0.08 kg	SUC204
FBL205	85.7	63.5	41.3	46.0	41.2	28.6	11.4	120.6	10.7	14.3	M10	0.11 kg	SUC205
FBL206	96.5	76.0	47.6	52.4	41.5	31.8	13.3	138.5	10.7	15.9	M10	0.16 kg	SUC206
FBL207	109.5	98.0	50.8	60.3	47.1	31.8	16.1	157.0	13.1	17.5	M12	0.23 kg	SUC207

Dimensions are accurate at the time of document creation but may vary

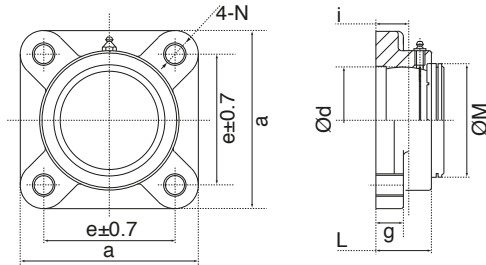
Thermoplastische Gehäuse / Thermoplastic Pillow Blocks



13

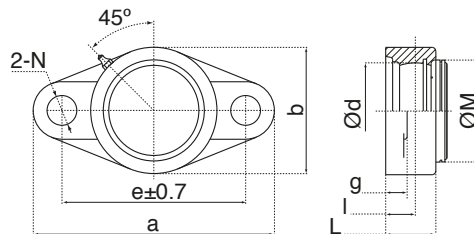
Ref Type	d	a	e	h	b	s	c	Bi	n	g	Weight Kg	Bearing No.
TPA204	20.0	76.0	52.0	33.3	38.0	M8	64.0	31.0	12.7	13.0	0.09 kg	SUC204
TPA205	25.0	84.0	56.0	36.5	38.0	M10	72.0	34.1	14.3	13.0	0.12 kg	SUC205
TPA206	30.0	94.0	66.0	42.9	48.0	M10	84.0	38.1	15.9	16.0	0.18 kg	SUC206
TPA207	35.0	110.0	80.0	47.6	48.0	M10	95.0	49.2	17.5	18.0	0.26 kg	SUC207
TPA208	40.0	116.0	84.0	49.2	54.0	M12	100.0	49.2	19.0	20.0	0.3 kg	SUC208
TPA209	45.0	120.0	90.0	54.2	54.0	M12	108.0	49.2	19.0	20.0	0.35 kg	SUC209
TPA210	50.0	130.0	94.0	57.2	60.0	M16	116.0	51.6	19.0	22.0	0.45 kg	SUC210

Rostfreie Gehäuse geschlossene Endkappe / Stainless Steel Housing Closed End Caps

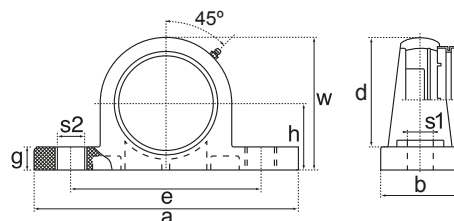


14

Ref. Type	d	a	e	l	g	L	N	M	Weight Kg	Bearing No
SF204-ECC	47	86	64	15	12	25.5	12	54.25	0.47	SUC204
SF205-ECC	52	95	70	16	14	27	12	60.25	0.65	SUC205
SF206-ECC	62	108	83	18	14.3	31	12	70.35	0.85	SUC206
SF207-ECC	72	117	92	19	15.5	34	14	80.35	1.03	SUC207
SF208-ECC	80	130	102	21	15.5	36	16	88.22	1.38	SUC208

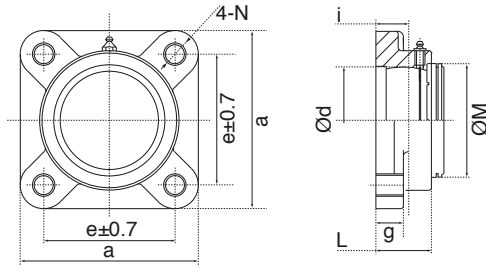


Ref. Type	d	a	e	b	l	g	L	N	M	Weight Kg	Bearing No
SFL204-ECC	47	112	90	15	60	12	25.5	12	54.25	0.32	SUC204
SFL205-ECC	52	124	99	16	68	13.5	27	16	60.25	0.44	SUC205
SFL206-ECC	62	141	117	18	79	13.5	31	16	70.35	0.58	SUC206
SFL207-ECC	72	155	130	19	89	15	34	16	80.35	0.74	SUC207
SFL208-ECC	80	171	144	21	99	15	36	16	88.22	0.99	SUC208



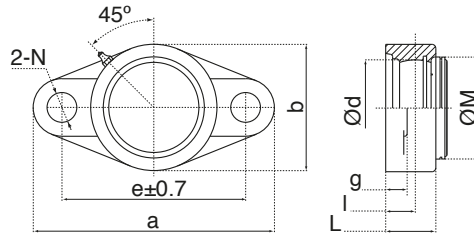
Ref. Type	d	h	a	e	b	S1	S2	g	W	M	Weight Kg	Bearing No
SP204-ECC	47	33.3	127	95	38	13	19	14	65	54.25	0.69	SUC204
SP205-ECC	52	36.5	140	104	38	13	19	15	71	60.25	0.74	SUC205
SP206-ECC	62	42.9	165	131	47	17	21	17	83	70.35	1.29	SUC206
SP207-ECC	72	47.6	167	127	48	17	21	18	93	80.35	1.42	SUC207
SP208-ECC	80	49.2	184	137	54	17	21	18	100	88.22	1.82	SUC208

Rostfreie Gehäuse offene Endkappe / Stainless Steel Housing Open End Caps

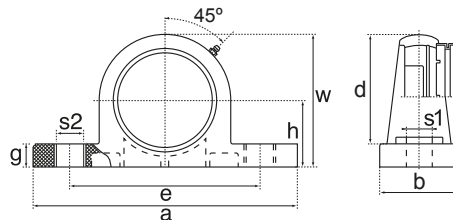


15

Ref. Type	d	a	e	l	g	L	N	M	Weight Kg	Bearing No
SF204-ECH	47	86	64	15	12	25.5	12	54.25	0.47	SUC204
SF205-ECH	52	95	70	16	14	27	12	60.25	0.65	SUC205
SF206-ECH	62	108	83	18	14.3	31	12	70.35	0.85	SUC206
SF207-ECH	72	117	92	19	15.5	34	14	80.35	1.03	SUC207
SF208-ECH	80	130	102	21	15.5	36	16	88.22	1.38	SUC208



Ref. Type	d	a	e	b	l	g	L	N	M	Weight Kg	Bearing No
SFL204-ECH	47	112	90	15	60	12	25.5	12	54.25	0.32	SUC204
SFL205-ECH	52	124	99	16	68	13.5	27	16	60.25	0.44	SUC205
SFL206-ECH	62	141	117	18	79	13.5	31	16	70.35	0.58	SUC206
SFL207-ECH	72	155	130	19	89	15	34	16	80.35	0.74	SUC207
SFL208-ECH	80	171	144	21	99	15	36	16	88.22	0.99	SUC208



Ref. Type	d	h	a	e	b	S1	S2	g	W	M	Weight Kg	Bearing No
SP204-ECH	47	33.3	127	95	38	13	19	14	65	54.25	0.69	SUC204
SP205-ECH	52	36.5	140	104	38	13	19	15	71	60.25	0.74	SUC205
SP206-ECH	62	42.9	165	131	47	17	21	17	83	70.35	1.29	SUC206
SP207-ECH	72	47.6	167	127	48	17	21	18	93	80.35	1.42	SUC207
SP208-ECH	80	49.2	184	137	54	17	21	18	100	88.22	1.82	SUC208

www.zen.biz

Alle Rechte vorbehalten, kein Teil des Katalogs darf in irgendeiner Form (Druck, Fotokopie, Mikrofilm oder in einem anderen Verfahren) ohne Genehmigung reproduziert oder unter Verwendung elektronischer Systeme verarbeitet, vervielfältigt oder verbreitet werden.

Copyright reserved. No part of the catalogue is to be copied, extracted or modified without explicit permission from the copyright holder.

v.10 / 22



Bearings for your future