

ZON™
BEARINGS FOR YOUR FUTURE



Douilles à aiguilles : K



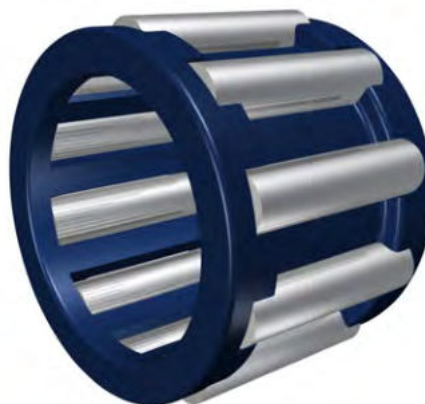


BEARINGS FOR YOUR FUTURE

Les roulements Zen sont fabriqués en accord avec les normes de qualité de plus haut niveau pour des applications standard et non standard. Notre service technique peut ajuster n'importe quel roulement non standard afin de l'adapter à vos nécessités, quelle qu'elle soit la quantité.

En plus de notre gamme de roulements miniature de plus de 1000 références, entre 1mm. et 10 mm., notre catalogue de produits contient aussi des roulements à section mince, des butées à billes, des roulements série populaire ainsi qu'un infinité de roulements non standard. Nous sommes en mesure de concevoir des roulements en concordance avec vos exigences en utilisant des nouveaux matériaux, tels que : céramiques ou aciers spéciaux pour différentes applications industrielles, médicales, chimiques ou de transformation alimentaire.

N'hésitez pas à contacter notre personnel commercial qualifié si jamais vous avez besoin d'une référence qui n'apparaît pas sur notre catalogue.



Douilles à aiguilles : K



Lubrification à l'huile



Conçu pour des applications de haute vitesse



Conçu pour supporter de lourdes charges

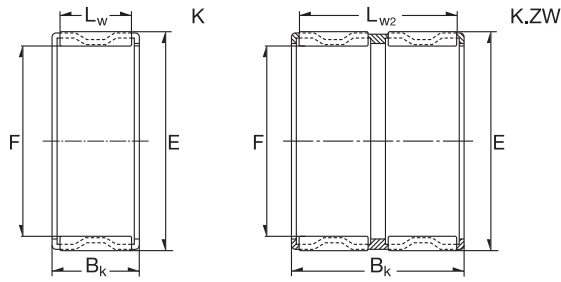


L'entreprise Zen Ball Bearings Shanghai a été gratifiée du certificat Aleman de qualité ISO TUV Rheinland pour l'inspection de ses propres produits Zen.

Ce certificat est l'une des plus hautes reconnaissances qu'une entreprise puisse atteindre dans notre secteur. Il s'agit d'un prix reconnu internationalement qui authentifie un haut niveau de qualité, orientation client et amélioration continue.

www.zen.biz

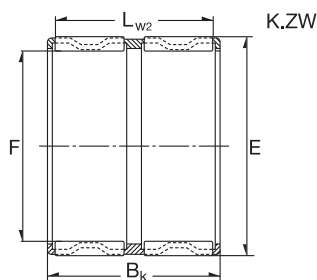
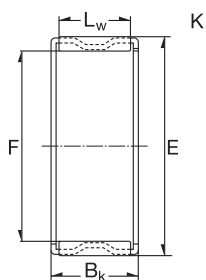
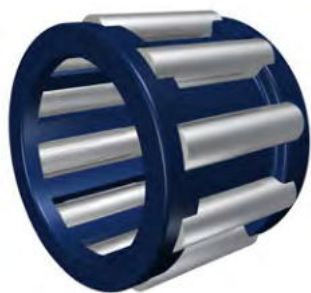
Douilles à aiguilles : K



3

| Dimension (mm) | | | Designation/Type | *Basic Load Rating | | *LimitingSpeed x1000rpm Oil | Mass (g) approx. |
|----------------|------|------|------------------|--------------------|------------|-----------------------------------|---------------------|
| F | E | BK | | C, dyn. N | C, stat. N | | |
| 5.0 | 8.0 | 8.0 | K 5X8X8 TN | 2300 | 1880 | 37.0 | >1 g |
| 5.0 | 8.0 | 10.0 | K 5X8X10 TN | 2800 | 2450 | 37.0 | >1 g |
| 6.0 | 9.0 | 8.0 | K 6X9X8 TN | 2560 | 2240 | 35.0 | >1 g |
| 6.0 | 9.0 | 10.0 | K 6X9X10 TN | 3300 | 3100 | 35.0 | 1 g |
| 6.0 | 10.0 | 13.0 | K 6X9X13 TN | 3500 | 2800 | 33.0 | >1 g |
| 7.0 | 10.0 | 8.0 | K 7X10X8 TN | 2750 | 2550 | 32.0 | 1 g |
| 7.0 | 10.0 | 10.0 | K 7-X10X10 TN | 3350 | 3400 | 32.0 | 1 g |
| 8.0 | 11.0 | 8.0 | K 8X11X8 TN | 3000 | 2900 | 30.0 | 1 g |
| 8.0 | 11.0 | 10.0 | K 8X11X10 TN | 3830 | 3950 | 30.0 | 1 g |
| 8.0 | 11.0 | 13.0 | K 8X11X13 TN | 5000 | 5700 | 30.0 | 1 g |
| 8.0 | 12.0 | 10.0 | K 8X12X10 TN | 4900 | 4600 | 30.0 | 1 g |
| 9.0 | 12.0 | 10.0 | K 9X12X10 TN | 4200 | 4700 | 30.0 | 1 g |
| 9.0 | 12.0 | 13.0 | K 9X12X13 TN | 5500 | 6700 | 30.0 | 1 g |
| 10.0 | 13.0 | 10.0 | K 10X13X10 TN | 4500 | 5250 | 27.0 | 1 g |
| 10.0 | 13.0 | 13.0 | K 10X13X13 TN | 6000 | 7600 | 27.0 | 2 g |
| 10.0 | 13.0 | 16.0 | K 10X13X16 TN | 6300 | 7800 | 27.0 | 2 g |
| 10.0 | 14.0 | 10.0 | K 10X14X10 TN | 7000 | 7900 | 26.0 | 2 g |
| 10.0 | 14.0 | 13.0 | K 10X14X13 TN | 8000 | 9100 | 27.0 | 4 g |
| 10.0 | 16.0 | 12.0 | K 10X16X12 TN | 7000 | 9300 | 27.0 | 3 g |
| 12.0 | 15.0 | 9.0 | K 12X15X9 TN | 4120 | 5210 | 25.0 | 2 g |
| 12.0 | 15.0 | 10.0 | K 12X15X10 TN | 4320 | 5730 | 25.0 | 1 g |
| 12.0 | 15.0 | 13.0 | K 12X15X13 TN | 6000 | 8100 | 25.0 | 2 g |
| 12.0 | 16.0 | 8.0 | K 12X16X8 TN | 4200 | 4700 | 25.0 | 2 g |
| 12.0 | 16.0 | 10.0 | K 12X16X10 TN | 6000 | 6900 | 25.0 | 3 g |
| 12.0 | 16.0 | 13.0 | K 12X16X13 TN | 7900 | 9200 | 25.0 | 3 g |
| 12.0 | 17.0 | 13.0 | K 12X17X13 TN | 9300 | 10000 | 24.0 | 4 g |
| 12.0 | 18.0 | 12.0 | K 12X18X12 TN | 9800 | 8000 | 24.0 | 5 g |
| 12.0 | 15.0 | 20.0 | K 12X15X20 TN | 8200 | 12000 | 25.0 | 3 g |
| 14.0 | 17.0 | 10.0 | K 14X17X10 | 5100 | 6800 | 23.0 | 4 g |
| 14.0 | 17.0 | 17.0 | K 14X17X17 | 9300 | 14000 | 23.0 | 6 g |
| 14.0 | 18.0 | 10.0 | K 14X18X10 | 6800 | 8300 | 23.0 | 4 g |

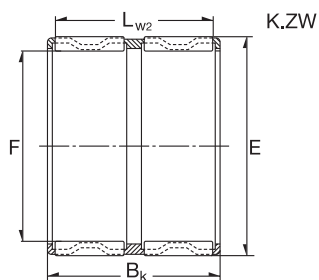
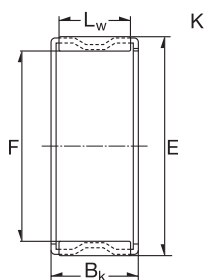
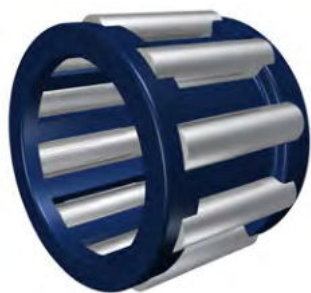
Douilles à aiguilles : K



4

| Dimension (mm) | | | Designation/Type | *Basic Load Rating | | *LimitingSpeed x1000rpm Oil | Mass (g) approx. |
|----------------|------|------|------------------|--------------------|------------|-----------------------------------|---------------------|
| F | E | BK | | C, dyn. N | C, stat. N | | |
| 14.0 | 18.0 | 13.0 | K 14X18X13 | 8100 | 9800 | 23.0 | 6 g |
| 14.0 | 18.0 | 14.0 | K 14X18X14 | 9200 | 12000 | 23.0 | 5 g |
| 14.0 | 18.0 | 15.0 | K 14X18X15 | 10000 | 13000 | 23.0 | 7 g |
| 14.0 | 18.0 | 17.0 | K 14X18X17 | 10500 | 13900 | 23.0 | - |
| 14.0 | 20.0 | 12.0 | K 14X20X12 | 9900 | 10500 | 22.0 | 18 g |
| 15.0 | 18.0 | 14.0 | K 15X18X14 | 7500 | 11000 | 23.0 | 5 g |
| 15.0 | 18.0 | 17.0 | K 15X18X17 | 9600 | 15900 | 23.0 | 5 g |
| 15.0 | 19.0 | 10.0 | K 15X19X10 | 7200 | 9000 | 23.0 | 5 g |
| 15.0 | 19.0 | 13.0 | K 15X19X13 | 8300 | 9800 | 22.0 | 7 g |
| 15.0 | 19.0 | 17.0 | K 15X19X17 | 10300 | 15000 | 22.0 | 8 g |
| 15.0 | 19.0 | 24.0 | K 15X19X24 | 12800 | 20100 | 22.0 | 10 g |
| 15.0 | 20.0 | 13.0 | K 15X20X13 | 9700 | 11000 | 22.0 | 8 g |
| 15.0 | 21.0 | 12.0 | K 15X21X12 | 10000 | 13000 | 22.0 | 10 g |
| 15.0 | 21.0 | 15.0 | K 15X21X15 | 13800 | 16000 | 22.0 | 13 g |
| 15.0 | 21.0 | 21.0 | K 15X21X21 | 18000 | 24000 | 22.0 | 18 g |
| 16.0 | 20.0 | 10.0 | K 16X20X10 | 7600 | 9700 | 22.0 | 5 g |
| 16.0 | 20.0 | 13.0 | K 16X20X13 | 8700 | 11300 | 22.0 | 7 g |
| 16.0 | 20.0 | 17.0 | K 16X20X17 | 11200 | 16300 | 22.0 | 9 g |
| 16.0 | 21.0 | 10.0 | K 16X21X10 | 9000 | 12000 | 22.0 | 6 g |
| 16.0 | 22.0 | 12.0 | K 16X22X12 | 11000 | 12000 | 21.0 | 10 g |
| 16.0 | 22.0 | 13.0 | K 16X22X13 | 12000 | 13400 | 21.0 | 11 g |
| 16.0 | 22.0 | 16.0 | K 16X22X16 | 14300 | 17000 | 21.0 | 13 g |
| 16.0 | 22.0 | 20.0 | K 16X22X20 | 18000 | 22300 | 21.0 | 16 g |
| 16.0 | 23.0 | 14.0 | K 16X23X14 | 19000 | 21000 | 19.0 | 20 g |
| 16.0 | 24.0 | 20.0 | K 16X24X20 | 21100 | 23000 | 20.0 | 24 g |
| 17.0 | 21.0 | 10.0 | K 17X21X10 | 7900 | 10100 | 21.0 | 5 g |
| 17.0 | 21.0 | 13.0 | K 17X21X13 | 10000 | 14100 | 21.0 | 7 g |
| 17.0 | 21.0 | 17.0 | K 17X21X17 | 12000 | 17400 | 21.0 | 9 g |
| 17.0 | 23.0 | 14.0 | K 17X23X14 | 11000 | 15000 | 21.0 | 11 g |
| 18.0 | 22.0 | 10.0 | K 18X22X10 | 8200 | 9900 | 20.0 | 6 g |
| 18.0 | 22.0 | 13.0 | K 18X22X13 | 9000 | 12100 | 20.0 | 7 g |

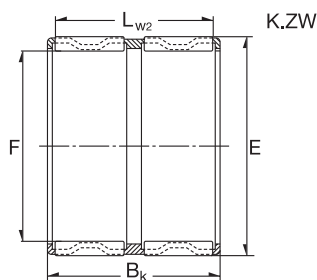
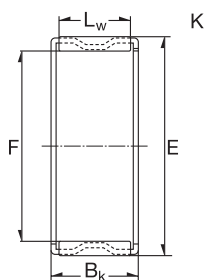
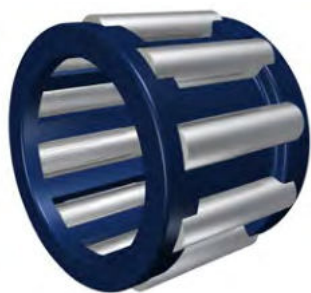
Douilles à aiguilles : K



5

| Dimension (mm) | | | Designation/Type | *Basic Load Rating | | *LimitingSpeed x1000rpm Oil | Mass (g) approx. |
|----------------|------|------|------------------|--------------------|------------|-----------------------------------|---------------------|
| F | E | BK | | C, dyn. N | C, stat. N | | |
| 18.0 | 22.0 | 17.0 | K 18X22X17 | 11900 | 17600 | 20.0 | 10 g |
| 18.0 | 24.0 | 12.0 | K 18X24X12 | 11200 | 12900 | 20.0 | 11 g |
| 18.0 | 24.0 | 13.0 | K 18X24X13 | 12900 | 14900 | 20.0 | 12 g |
| 18.0 | 24.0 | 13.5 | K 18X24X13.5 | 12900 | 14900 | 20.0 | 13 g |
| 18.0 | 24.0 | 20.0 | K 18X24X20 | 20000 | 26500 | 20.0 | 19 g |
| 18.0 | 25.0 | 14.0 | K 18X25X14 | 16500 | 18800 | 20.0 | 14 g |
| 18.0 | 25.0 | 22.0 | K 18X25X22 | 22900 | 28400 | 20.0 | 24 g |
| 18.0 | 26.0 | 14.0 | K 18X26X14 | 18000 | 20000 | 18.0 | 19 g |
| 18.0 | 28.0 | 16.0 | K 18X28X16 | 19000 | 18400 | 19.0 | 24 g |
| 19.0 | 23.0 | 13.0 | K 19X23X13 | 9300 | 13000 | 20.0 | 8 g |
| 19.0 | 23.0 | 17.0 | K 19X23X17 | 12000 | 18600 | 20.0 | 11 g |
| 20.0 | 24.0 | 10.0 | K 20X24X10 | 8700 | 12100 | 19.0 | 6 g |
| 20.0 | 24.0 | 12.0 | K 20X24X12 | 9600 | 13800 | 19.0 | 8 g |
| 20.0 | 24.0 | 13.0 | K 20X24X13 | 9600 | 13800 | 19.0 | 8 g |
| 20.0 | 24.0 | 17.0 | K 20X24X17 | 12400 | 20000 | 19.0 | 11 g |
| 20.0 | 26.0 | 12.0 | K 20X26X12 | 13100 | 15700 | 19.0 | 13 g |
| 20.0 | 26.0 | 16.0 | K 20X26X16 | 18000 | 25000 | 18.5 | 17 g |
| 20.0 | 26.0 | 17.0 | K 20X26X17 | 18700 | 25500 | 19.0 | 18 g |
| 20.0 | 26.0 | 20.0 | K 20X26X20 | 20600 | 28500 | 18.0 | 22 g |
| 20.0 | 28.0 | 20.0 | K 20X28X20 | 23400 | 28000 | 18.0 | 26 g |
| 20.0 | 28.0 | 25.0 | K 20X28X25 | 30000 | 28500 | 18.0 | 36 g |
| 20.0 | 30.0 | 30.0 | K 20X30X30 | 35000 | 41000 | 19.0 | 56 g |
| 21.0 | 25.0 | 13.0 | K 21X25X13 | 9600 | 14500 | 19.0 | 9 g |
| 21.0 | 25.0 | 17.0 | K 21X25X17 | 12800 | 21000 | 18.0 | 12 g |
| 22.0 | 26.0 | 10.0 | K 22X26X10 | 8700 | 12900 | 18.0 | 7 g |
| 22.0 | 26.0 | 13.0 | K 22X26X13 | 10000 | 15400 | 18.0 | 9 g |
| 22.0 | 26.0 | 17.0 | K 22X26X17 | 13100 | 22100 | 18.0 | 12 g |
| 22.0 | 27.0 | 13.0 | K 22X27X13 | 14000 | 23000 | 18.0 | 10 g |
| 22.0 | 28.0 | 17.0 | K 22X28X17 | 19000 | 26500 | 19.0 | 19 g |
| 22.0 | 28.0 | 23.0 | K 22X28X23 | 20000 | 27000 | 17.0 | 26 g |
| 22.0 | 29.0 | 16.0 | K 22X29X16 | 19500 | 25000 | 17.0 | 22 g |

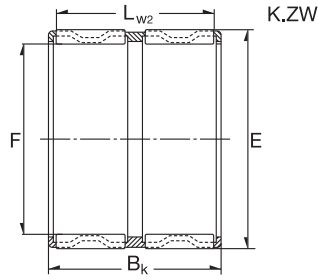
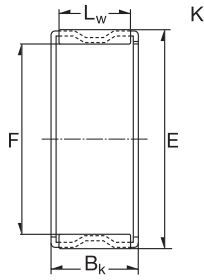
Douilles à aiguilles : K



6

| Dimension (mm) | | | Designation/Type | *Basic Load Rating | | *LimitingSpeed x1000rpm Oil | Mass (g) approx. |
|----------------|------|------|------------------|--------------------|------------|-----------------------------------|---------------------|
| F | E | BK | | C, dyn. N | C, stat. N | | |
| 22.0 | 30.0 | 15.0 | K 22X30X15 TN | 19600 | 22900 | 18.9 | 14 g |
| 22.0 | 30.0 | 20.0 | K 22X30X20 | 21000 | 23500 | 18.9 | 28 g |
| 23.0 | 32.0 | 24.0 | K 22X32X24 | 33500 | 39500 | 16.0 | 43 g |
| 24.0 | 35.0 | 16.0 | K 23X35X16 TN | 24000 | 23400 | 15.0 | 30 g |
| 24.0 | 28.0 | 10.0 | K 24X28X10 | 9400 | 14300 | 17.0 | 8 g |
| 24.0 | 28.0 | 13.0 | K 24X28X13 | 10500 | 17000 | 17.0 | 10 g |
| 24.0 | 28.0 | 17.0 | K 24X28X17 | 14000 | 24500 | 17.0 | 13 g |
| 24.0 | 29.0 | 13.0 | K 24X29X13 | 13100 | 19100 | 16.0 | 13 g |
| 24.0 | 30.0 | 17.0 | K 24X30X17 | 19000 | 27000 | 16.0 | 21 g |
| 24.0 | 30.0 | 31.0 | K 24X30X31 | 27000 | 43000 | 16.0 | 39 g |
| 25.0 | 29.0 | 10.0 | K 25X29X10 | 9700 | 14900 | 16.0 | 8 g |
| 25.0 | 29.0 | 13.0 | K 25X29X13 | 10800 | 17900 | 16.0 | 10 g |
| 25.0 | 29.0 | 17.0 | K 25X29X17 | 14500 | 25500 | 16.0 | 13 g |
| 25.0 | 30.0 | 13.0 | K 25X30X13 | 14100 | 21300 | 16.0 | 12 g |
| 25.0 | 30.0 | 20.0 | K 25X30X20 | 21100 | 28000 | 16.0 | 20 g |
| 25.0 | 30.0 | 25.0 | K 25X30X25 | 21700 | 40400 | 15.0 | 21 g |
| 25.0 | 30.0 | 26.0 | K 25X30X26 | 20100 | 26500 | 15.0 | 21 g |
| 25.0 | 31.0 | 17.0 | K 25X31X17 | 19000 | 28000 | 16.0 | 21 g |
| 25.0 | 31.0 | 21.0 | K 25X31X21 | 24100 | 37500 | 16.0 | 26 g |
| 25.0 | 32.0 | 16.0 | K 25X32X16 | 20500 | 27500 | 15.0 | 24 g |
| 25.0 | 33.0 | 20.0 | K 25X33X20 | 28000 | 37500 | 15.0 | 32 g |
| 25.0 | 33.0 | 24.0 | K 25X33X24 | 33900 | 46500 | 15.0 | 38 g |
| 25.0 | 34.0 | 18.0 | K 25X34X18 | 48000 | 67000 | 15.0 | 32 g |
| 25.0 | 35.0 | 30.0 | K 25X35X30 | 46500 | 61500 | 14.0 | 65 g |
| 25.0 | 30.0 | 26.0 | K 25X30X26 | 21000 | 35000 | 14.0 | 27 g |
| 26.0 | 30.0 | 10.0 | K 26X30X10 | 9500 | 15500 | 16.0 | 9 g |
| 26.0 | 30.0 | 13.0 | K 26X30X13 | 11100 | 18700 | 16.0 | 11 g |
| 26.0 | 30.0 | 17.0 | K 26X30X17 | 14700 | 27000 | 16.0 | 15 g |
| 26.0 | 31.0 | 13.0 | K 26X31X13 | 12400 | 18400 | 15.0 | 9 g |
| 26.0 | 30.0 | 22.0 | K 26X30X22 | 15200 | 28000 | 16.0 | 12 g |
| 27.0 | 32.0 | 17.0 | K 27X32X17 | 16000 | 34000 | 17.0 | 29 g |

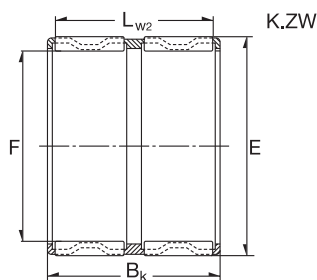
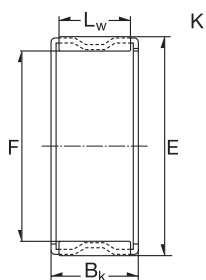
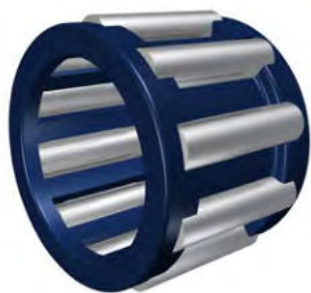
Douilles à aiguilles : K



7

| Dimension (mm) | | | Designation/Type | *Basic Load Rating | | *LimitingSpeed x1000rpm Oil | Mass (g) approx. |
|----------------|------|------|------------------|--------------------|------------|-----------------------------------|---------------------|
| F | E | BK | | C, dyn. N | C, stat. N | | |
| 28.0 | 32.0 | 16.5 | K 28X32X16.5 | 15000 | 32400 | 14.0 | 18 g |
| 28.0 | 32.0 | 17.0 | K 28X32X17 | 15000 | 32400 | 14.0 | 18 g |
| 28.0 | 33.0 | 13.0 | K 28X33X13 | 14800 | 23600 | 14.0 | 15 g |
| 28.0 | 33.0 | 17.0 | K 28X33X17 | 19100 | 33000 | 14.0 | 19 g |
| 28.0 | 33.0 | 27.0 | K 28X33X27 TN | 22800 | 40500 | 14.0 | 19 g |
| 28.0 | 34.0 | 17.0 | K 28X34X17 | 21300 | 35000 | 14.0 | 24 g |
| 28.0 | 35.0 | 16.0 | K 28X35X16 | 21000 | 29000 | 14.0 | 29 g |
| 28.0 | 35.0 | 18.0 | K 28X35X18 | 23500 | 33500 | 14.0 | 31 g |
| 28.0 | 35.0 | 20.0 | K 28X35X20 | 24000 | 34000 | 14.0 | 35 g |
| 28.0 | 35.0 | 27.0 | K 28X35X27 | 34500 | 54500 | 14.0 | 47 g |
| 28.0 | 36.0 | 16.0 | K 28X36X16 | 34000 | 47000 | 11.0 | 40 g |
| 28.0 | 40.0 | 18.0 | K 28X40X18 | 33000 | 36500 | 12.0 | 50 g |
| 28.0 | 40.0 | 25.0 | K 28X40X25 | 45000 | 54500 | 12.0 | 71 g |
| 30.0 | 34.0 | 13.0 | K 30X34X13 | 11800 | 21200 | 13.0 | 14 g |
| 30.0 | 35.0 | 13.0 | K 30X35X13 | 11500 | 25000 | 13.0 | 16 g |
| 30.0 | 35.0 | 17.0 | K 30X35X17 | 19100 | 33500 | 13.0 | 21 g |
| 30.0 | 35.0 | 27.0 | K 30X35X27 | 30000 | 58500 | 13.0 | 33 g |
| 30.0 | 37.0 | 16.0 | K 30X37X16 | 22500 | 33000 | 13.0 | 26 g |
| 30.0 | 38.0 | 25.0 | K 30X38X25 | 16000 | 39000 | 13.0 | 43 g |
| 30.0 | 40.0 | 18.0 | K 30X40X18 | 31500 | 39500 | 12.0 | 44 g |
| 30.0 | 40.0 | 30.0 | K 30X40X30 | 48500 | 68500 | 13.0 | 78 g |
| 30.0 | 35.0 | 26.0 | K 30X35X26 | 23500 | 43500 | 12.0 | 32 g |
| 32.0 | 37.0 | 13.0 | K 32X37X13 | 15000 | 25000 | 12.0 | 18 g |
| 32.0 | 37.0 | 17.0 | K 32X37X17 | 19400 | 35000 | 12.0 | 22 g |
| 32.0 | 37.0 | 27.0 | K 32X37X27 | 29500 | 59500 | 12.0 | 36 g |
| 32.0 | 37.0 | 28.0 | K 32X37X28 TN | 23100 | 43000 | 12.0 | 22 g |
| 32.0 | 38.0 | 16.0 | K 32X38X16 | 21000 | 34000 | 12.0 | 25 g |
| 32.0 | 38.0 | 20.0 | K 32X38X20 | 26000 | 44500 | 12.0 | 31 g |
| 32.0 | 38.0 | 26.0 | K 32X38X26 TN | 27000 | 46500 | 12.0 | 25 g |
| 32.0 | 39.0 | 16.0 | K 32X39X16 | 23500 | 35000 | 12.0 | 36 g |
| 32.0 | 39.0 | 18.0 | K 32X39X18 | 26000 | 40500 | 12.0 | 37 g |

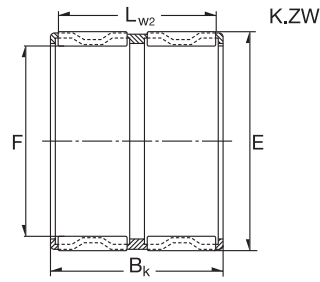
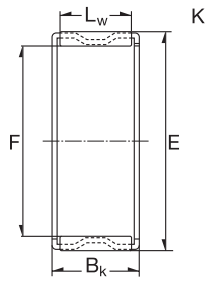
Douilles à aiguilles : K



8

| Dimension (mm) | | | Designation/Type | *Basic Load Rating | | *LimitingSpeed x1000rpm Oil | Mass (g) approx. |
|----------------|------|------|------------------|--------------------|------------|-----------------------------------|---------------------|
| F | E | BK | | C, dyn. N | C, stat. N | | |
| 32.0 | 40.0 | 20.0 | K 32X40X20 | 37000 | 40500 | 12.0 | 48 g |
| 32.0 | 40.0 | 36.0 | K 32X40X36 | 53500 | 91500 | 12.0 | 73 g |
| 32.0 | 46.0 | 32.0 | K 32X46X32 | 65500 | 82500 | 11.0 | 119 g |
| 32.0 | 40.0 | 42.0 | K 32X40X42 TN | 49500 | 83500 | 12.0 | 77 g |
| 35.0 | 40.0 | 13.0 | K 35X40X13 | 15800 | 27500 | 11.0 | 18 g |
| 35.0 | 40.0 | 17.0 | K 35X40X17 | 20300 | 38000 | 11.0 | 25 g |
| 35.0 | 40.0 | 25.0 | K 35X40X25 | 29000 | 59500 | 11.0 | 31 g |
| 35.0 | 40.0 | 27.0 | K 35X40X27 TN | 24500 | 48000 | 11.0 | 23 g |
| 35.0 | 40.0 | 27.0 | K 35X40X27 | 27800 | 62100 | 11.0 | 28 g |
| 35.0 | 40.0 | 30.0 | K 35X40X30 | 25000 | 49500 | 11.0 | 43 g |
| 35.0 | 42.0 | 16.0 | K 35X42X16 | 23900 | 37000 | 11.0 | 34 g |
| 35.0 | 42.0 | 18.0 | K 35X42X18 | 27000 | 42500 | 11.0 | 39 g |
| 35.0 | 42.0 | 30.0 | K 35X42X30 | 38500 | 67500 | 11.0 | 62 g |
| 35.0 | 43.0 | 18.0 | K 35X43X18 | 28000 | 41500 | 11.0 | 38 g |
| 35.0 | 45.0 | 20.0 | K 35X45X20 | 36500 | 49500 | 10.0 | 55 g |
| 35.0 | 45.0 | 30.0 | K 35X45X30 | 52500 | 78500 | 10.0 | 80 g |
| 35.0 | 45.0 | 49.0 | K 35X45X49 | 81500 | 13400 | 10.0 | 120 g |
| 35.0 | 40.0 | 30.0 | K 35X40X30 | 31500 | 65500 | 11.0 | 48 g |
| 35.0 | 42.0 | 20.0 | K 35X42X20 | 29500 | 48500 | 11.0 | 41 g |
| 36.0 | 41.0 | 30.0 | K 36X41X30 | 23000 | 43000 | 11.0 | 52 g |
| 36.0 | 42.0 | 16.0 | K 36X42X16 | 24000 | 42000 | 11.0 | 50 g |
| 37.0 | 42.0 | 17.0 | K 37X42X17 | 21900 | 42500 | 10.0 | 25 g |
| 37.0 | 42.0 | 27.0 | K 37X42X27 | 31500 | 67500 | 10.0 | 40 g |
| 37.0 | 45.0 | 26.0 | K 37X45X26 | 43500 | 73500 | 10.0 | 60 g |
| 38.0 | 43.0 | 17.0 | K 38X43X17 | 20000 | 38000 | 10.0 | 26 g |
| 38.0 | 43.0 | 27.0 | K 38X43X27 | 31000 | 67500 | 10.0 | 43 g |
| 38.0 | 46.0 | 20.0 | K 38X46X20 | 35000 | 56500 | 10.0 | 46 g |
| 38.0 | 46.0 | 32.0 | K 38X46X32 | 54500 | 98500 | 10.0 | 72 g |
| 39.0 | 44.0 | 24.0 | K 39X44X24 | 28000 | 58500 | 10.0 | 38 g |
| 39.0 | 44.0 | 26.0 | K 39X44X26 | 27000 | 55500 | 10.0 | 29 g |
| 40.0 | 44.0 | 13.0 | K 40X44X13 | 13500 | 28000 | 10.0 | 20 g |

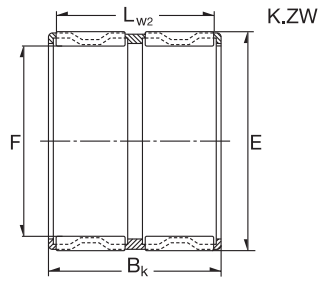
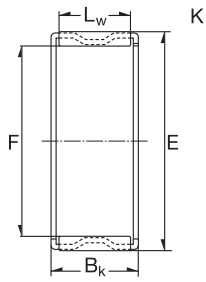
Douilles à aiguilles : K



9

| Dimension (mm) | | | Designation/Type | *Basic Load Rating | | *LimitingSpeed x1000rpm Oil | Mass (g) approx. |
|----------------|------|------|------------------|--------------------|------------|-----------------------------------|---------------------|
| F | E | BK | | C, dyn. N | C, stat. N | | |
| 40.0 | 45.0 | 13.0 | K 40X45X13 | 17100 | 32000 | 10.0 | 21 g |
| 40.0 | 45.0 | 17.0 | K 40X45X17 | 20900 | 41000 | 10.0 | 27 g |
| 40.0 | 45.0 | 21.0 | K 40X45X21 | 24400 | 49500 | 10.0 | 36 g |
| 40.0 | 45.0 | 27.0 | K 40X45X27 | 32500 | 72500 | 10.0 | 46 g |
| 40.0 | 46.0 | 17.0 | K 40X46X17 | 24500 | 44500 | 9.0 | 30 g |
| 40.0 | 47.0 | 18.0 | K 40X47X18 | 29000 | 49500 | 9.0 | 45 g |
| 40.0 | 47.0 | 20.0 | K 40X47X20 | 32000 | 56500 | 9.0 | 42 g |
| 40.0 | 48.0 | 20.0 | K 40X48X20 | 35500 | 58500 | 9.0 | 57 g |
| 40.0 | 45.0 | 30.0 | K 40X45X30 | 26000 | 53500 | 9.0 | 48 g |
| 42.0 | 47.0 | 13.0 | K 42X47X13 | 17300 | 33000 | 9.0 | 22 g |
| 42.0 | 47.0 | 17.0 | K 42X47X17 | 21100 | 42500 | 9.0 | 31 g |
| 42.0 | 47.0 | 25.0 | K 42X47X25 TN | 27000 | 57500 | 9.0 | 25 g |
| 42.0 | 47.0 | 27.0 | K 42X47X27 | 33000 | 74500 | 9.0 | 46 g |
| 42.0 | 48.0 | 35.0 | K 42X48X35 | 35000 | 76000 | 9.0 | 60 g |
| 42.0 | 50.0 | 18.0 | K 42X50X18 | 31000 | 49500 | 9.0 | 53 g |
| 42.0 | 50.0 | 20.0 | K 42X50X20 | 34500 | 56500 | 9.0 | 54 g |
| 42.0 | 47.0 | 30.0 | K 42X47X30 | 31000 | 75500 | 9.0 | 54 g |
| 43.0 | 48.0 | 17.0 | K 43X48X17 | 21000 | 42500 | 9.0 | 29 g |
| 43.0 | 48.0 | 27.0 | K 43X48X27 | 33000 | 74500 | 9.0 | 45 g |
| 43.0 | 50.0 | 18.0 | K 43X50X18 | 30500 | 53500 | 9.0 | 48 g |
| 45.0 | 49.0 | 19.0 | K 45X49X19 | 17500 | 40000 | 8.0 | 27 g |
| 45.0 | 50.0 | 17.0 | K 45X50X17 | 22000 | 45000 | 8.0 | 25 g |
| 45.0 | 50.0 | 27.0 | K 45X50X27 | 34000 | 79500 | 8.0 | 50 g |
| 45.0 | 50.0 | 32.0 | K 45X50X32 TN | 38000 | 90500 | 8.0 | 45 g |
| 45.0 | 52.0 | 18.0 | K 45X52X18 | 31000 | 56500 | 8.0 | 51 g |
| 45.0 | 52.0 | 21.0 | K 45X52X21 TN | 39500 | 57500 | 8.0 | 32 g |
| 45.0 | 53.0 | 20.0 | K 45X53X20 | 38500 | 66500 | 8.0 | 62 g |
| 45.0 | 53.0 | 21.0 | K 45X53X21 | 38000 | 66500 | 8.0 | 65 g |
| 45.0 | 53.0 | 22.0 | K 45X53X22 | 42000 | 66500 | 8.0 | 68 g |
| 45.0 | 53.0 | 28.0 | K 45X53X28 | 51500 | 97500 | 8.0 | 78 g |
| 45.0 | 59.0 | 18.0 | K 45X59X18 TN | 43500 | 53500 | 7.0 | 60 g |

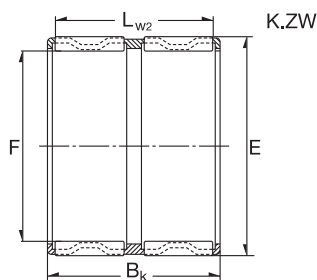
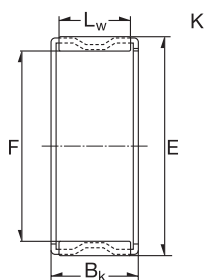
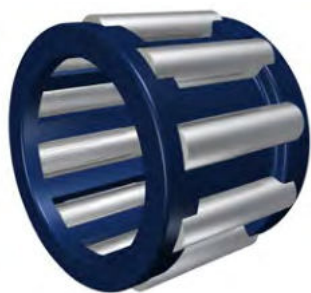
Douilles à aiguilles : K



10

| Dimension (mm) | | | Designation/Type | *Basic Load Rating | | *LimitingSpeed x1000rpm Oil | Mass (g) approx. |
|----------------|------|------|------------------|--------------------|------------|-----------------------------------|---------------------|
| F | E | BK | | C, dyn. N | C, stat. N | | |
| 45.0 | 59.0 | 32.0 | K 45X59X32 | 72500 | 101500 | 7.0 | 145 g |
| 45.0 | 59.0 | 36.0 | K 45X59X36 | 75500 | 108500 | 7.0 | 195 g |
| 45.0 | 51.0 | 36.0 | K 45X51X36 | 44500 | 98500 | 7.0 | 85 g |
| 47.0 | 52.0 | 17.0 | K 47X52X17 | 22800 | 48500 | 8.0 | 32 g |
| 47.0 | 52.0 | 27.0 | K 47X52X27 | 34500 | 82500 | 8.0 | 50 g |
| 47.0 | 53.0 | 25.0 | K 47X53X25 | 38000 | 81500 | 8.0 | 53 g |
| 47.0 | 55.0 | 28.0 | K 47X55X28 | 52500 | 99500 | 7.5 | 62 g |
| 48.0 | 54.0 | 19.0 | K 48X54X19 | 30000 | 60500 | 7.5 | 44 g |
| 48.0 | 54.0 | 25.0 | K 48X54X25 | 31000 | 91000 | 7.5 | 55 g |
| 50.0 | 55.0 | 13.5 | K 50X55X13.5 | 17500 | 36000 | 7.5 | 31 g |
| 50.0 | 55.0 | 17.0 | K 50X55X17 | 21400 | 46500 | 7.5 | 35 g |
| 50.0 | 55.0 | 20.0 | K 50X55X20 | 26000 | 59500 | 7.5 | 39 g |
| 50.0 | 55.0 | 30.0 | K 50X55X30 | 38500 | 96500 | 7.5 | 59 g |
| 50.0 | 57.0 | 18.0 | K 50X57X18 | 33000 | 62500 | 7.0 | 53 g |
| 50.0 | 58.0 | 20.0 | K 50X58X20 | 35000 | 61500 | 7.0 | 64 g |
| 50.0 | 58.0 | 25.0 | K 50X58X25 | 43500 | 80500 | 7.0 | 81 g |
| 52.0 | 57.0 | 12.0 | K 52X57X12 | 17500 | 36000 | 7.0 | 24 g |
| 55.0 | 60.0 | 20.0 | K 55X60X20 | 28000 | 65500 | 6.5 | 43 g |
| 55.0 | 60.0 | 27.0 | K 55X60X27 | 37500 | 96500 | 6.5 | 60 g |
| 55.0 | 60.0 | 30.0 | K 55X60X30 | 40500 | 10300 | 6.5 | 68 g |
| 55.0 | 61.0 | 20.0 | K 55X61X20 | 41000 | 11000 | 6.5 | 56 g |
| 55.0 | 62.0 | 18.0 | K 55X62X18 | 35000 | 68500 | 6.5 | 58 g |
| 55.0 | 63.0 | 15.0 | K 55X63X15 | 24500 | 40500 | 6.5 | 53 g |
| 55.0 | 63.0 | 20.0 | K 55X63X20 | 39500 | 79500 | 6.5 | 73 g |
| 55.0 | 63.0 | 25.0 | K 55X63X25 | 49500 | 99500 | 6.5 | 88 g |
| 55.0 | 63.0 | 32.0 | K 55X63X32 | 61500 | 129500 | 6.5 | 117 g |
| 55.0 | 60.0 | 40.0 | K 55X60X40 | 48000 | 132000 | 6.5 | 96 g |
| 56.0 | 61.0 | 20.0 | K 56X61X20 | 27000 | 64500 | 6.5 | 45 g |
| 58.0 | 63.0 | 17.0 | K 58X63X17 | 21500 | 63500 | 6.0 | 42 g |
| 58.0 | 64.0 | 19.0 | K 58X64X19 | 24500 | 77500 | 6.0 | 53 g |
| 58.0 | 65.0 | 18.0 | K 58X65X18 | 34500 | 69500 | 6.0 | 52 g |

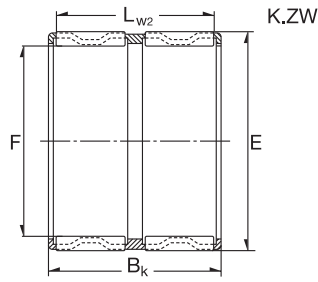
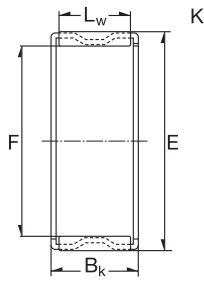
Douilles à aiguilles : K



11

| Dimension (mm) | | | Designation/Type | *Basic Load Rating | | *LimitingSpeed x1000rpm Oil | Mass (g) approx. |
|----------------|------|------|------------------|--------------------|------------|-----------------------------------|---------------------|
| F | E | BK | | C, dyn. N | C, stat. N | | |
| 58.0 | 65.0 | 38.0 | K 58X65X38 | 48500 | 106500 | 6.0 | 106 g |
| 60.0 | 65.0 | 20.0 | K 60X65X20 | 29000 | 71500 | 6.0 | 50 g |
| 60.0 | 65.0 | 30.0 | K 60X65X30 | 42000 | 115500 | 6.0 | 71 g |
| 60.0 | 68.0 | 20.0 | K 60X68X20 | 43000 | 84500 | 5.5 | 79 g |
| 60.0 | 68.0 | 23.0 | K 60X68X23 | 49000 | 100500 | 5.5 | 94 g |
| 60.0 | 68.0 | 25.0 | K 60X68X25 | 52500 | 110500 | 5.5 | 97 g |
| 60.0 | 68.0 | 27.0 | K 60X68X27 | 59000 | 120500 | 6.0 | 98 g |
| 60.0 | 75.0 | 42.0 | K 60X75X42 | 11300 | 19200 | 5.5 | 240 g |
| 60.0 | 66.0 | 33.0 | K 60X66X33 | 45500 | 111500 | 6.0 | 104 g |
| 60.0 | 66.0 | 40.0 | K 60X66X40 | 57500 | 150500 | 5.5 | 116 g |
| 60.0 | 68.0 | 30.0 | K 60X68X30 | 44000 | 87500 | 5.5 | 136 g |
| 60.0 | 68.0 | 34.0 | K 60X68X34 | 47500 | 95500 | 5.5 | 140 g |
| 62.0 | 70.0 | 40.0 | K 62X70X40 | 65500 | 145500 | 5.5 | 147 g |
| 63.0 | 70.0 | 21.0 | K 63X70X21 | 45000 | 100500 | 5.5 | 75 g |
| 64.0 | 70.0 | 16.0 | K 64X70X16 | 27500 | 59500 | 5.5 | 53 g |
| 65.0 | 70.0 | 20.0 | K 65X70X20 | 30000 | 76500 | 5.5 | 49 g |
| 65.0 | 70.0 | 30.0 | K 65X70X30 | 43500 | 123500 | 5.5 | 83 g |
| 65.0 | 73.0 | 23.0 | K 65X73X23 | 45500 | 93500 | 5.5 | 100 g |
| 65.0 | 73.0 | 30.0 | K 65X73X30 | 56500 | 122500 | 5.5 | 126 g |
| 68.0 | 74.0 | 20.0 | K 68X74X20 | 35000 | 83500 | 5.5 | 65 g |
| 68.0 | 74.0 | 30.0 | K 68X74X30 | 46000 | 117500 | 5.5 | 97 g |
| 68.0 | 74.0 | 35.0 | K 68X74X35 | 48000 | 124500 | 5.5 | 116 g |
| 68.0 | 75.0 | 32.0 | K 68X75X32 | 53500 | 127500 | 4.5 | 120 g |
| 70.0 | 76.0 | 20.0 | K 70X76X20 | 35500 | 85500 | 4.5 | 70 g |
| 70.0 | 76.0 | 30.0 | K 70X76X30 | 51500 | 138500 | 4.5 | 100 g |
| 70.0 | 78.0 | 25.0 | K 70X78X25 | 51500 | 111500 | 4.5 | 115 g |
| 70.0 | 78.0 | 30.0 | K 70X78X30 | 59500 | 134500 | 4.5 | 136 g |
| 70.0 | 80.0 | 30.0 | K 70X80X30 | 72500 | 147500 | 4.5 | 150 g |
| 70.0 | 78.0 | 46.0 | K 70X78X46 | 77500 | 18800 | 4.5 | 230 g |
| 72.0 | 80.0 | 20.0 | K 72X80X20 | 41000 | 84500 | 4.5 | 94 g |
| 73.0 | 79.0 | 20.0 | K 73X79X20 | 36500 | 99500 | 4.5 | 69 g |

Douilles à aiguilles : K



12

| Dimension (mm) | | | Designation/Type | *Basic Load Rating | | *LimitingSpeed x1000rpm Oil | Mass (g) approx. |
|----------------|-------|------|------------------|--------------------|------------|-----------------------------------|---------------------|
| F | E | BK | | C, dyn. N | C, stat. N | | |
| 75.0 | 81.0 | 20.0 | K 75X81X20 | 37000 | 93500 | 4.5 | 72 g |
| 75.0 | 81.0 | 30.0 | K 75X81X30 | 51500 | 142000 | 4.5 | 106 g |
| 75.0 | 83.0 | 23.0 | K 75X83X23 | 49500 | 108000 | 4.0 | 113 g |
| 75.0 | 83.0 | 30.0 | K 75X83X30 | 61500 | 142000 | 4.0 | 174 g |
| 75.0 | 83.0 | 35.0 | K 75X83X35 | 62500 | 146500 | 4.0 | 165 g |
| 75.0 | 83.0 | 40.0 | K 75X83X40 | 72500 | 176500 | 4.0 | 190 g |
| 80.0 | 86.0 | 20.0 | K 80X86X20 | 38000 | 97500 | 4.0 | 76 g |
| 80.0 | 86.0 | 30.0 | K 80X86X30 | 55500 | 158500 | 4.0 | 114 g |
| 80.0 | 88.0 | 30.0 | K 80X88X30 | 71500 | 178500 | 4.0 | 141 g |
| 80.0 | 88.0 | 40.0 | K 80X88X40 | 75500 | 191500 | 4.0 | 204 g |
| 80.0 | 88.0 | 46.0 | K 80X88X46 | 87500 | 23000 | 4.0 | 235 g |
| 85.0 | 92.0 | 20.0 | K 85X92X20 | 44000 | 107500 | 3.5 | 96 g |
| 90.0 | 87.0 | 20.0 | K 90X97X20 | 44500 | 112500 | 3.0 | 103 g |
| 90.0 | 98.0 | 27.0 | K 90X98X27 | 60500 | 149500 | 3.0 | 150 g |
| 90.0 | 98.0 | 30.0 | K 90X98X30 | 67500 | 171500 | 3.0 | 172 g |
| 95.0 | 102.0 | 20.0 | K 95X102X20 | 45500 | 122500 | 2.9 | 110 g |
| 95.0 | 103.0 | 30.0 | K 95X103X30 | 68500 | 179500 | 2.9 | 177 g |
| 95.0 | 103.0 | 40.0 | K 95X103X40 | 82500 | 227500 | 2.9 | 250 g |
| 100.0 | 107.0 | 21.0 | K 100X107X21 | 47500 | 126500 | 2.7 | 120 g |
| 100.0 | 108.0 | 27.0 | K 100X108X27 | 56500 | 142500 | 2.7 | 176 g |
| 100.0 | 108.0 | 30.0 | K 100X108X30 | 70500 | 187500 | 2.7 | 190 g |
| 105.0 | 112.0 | 21.0 | K 105X112X21 | 47000 | 126500 | 2.5 | 123 g |
| 105.0 | 113.0 | 30.0 | K 105X113X30 | 71500 | 196500 | 2.5 | 198 g |
| 110.0 | 117.0 | 24.0 | K 110X117X24 | 55500 | 157500 | 2.3 | 146 g |
| 110.0 | 118.0 | 30.0 | K 110X118X30 | 77500 | 218500 | 2.3 | 217 g |

www.zen.biz

Tous droits réservés.
Aucune partie du catalogue ne
peut être copiée, extraite ou
modifiée sans autorisation explicite
du détenteur du copyright.

v.10 / 18



Bearings for your future