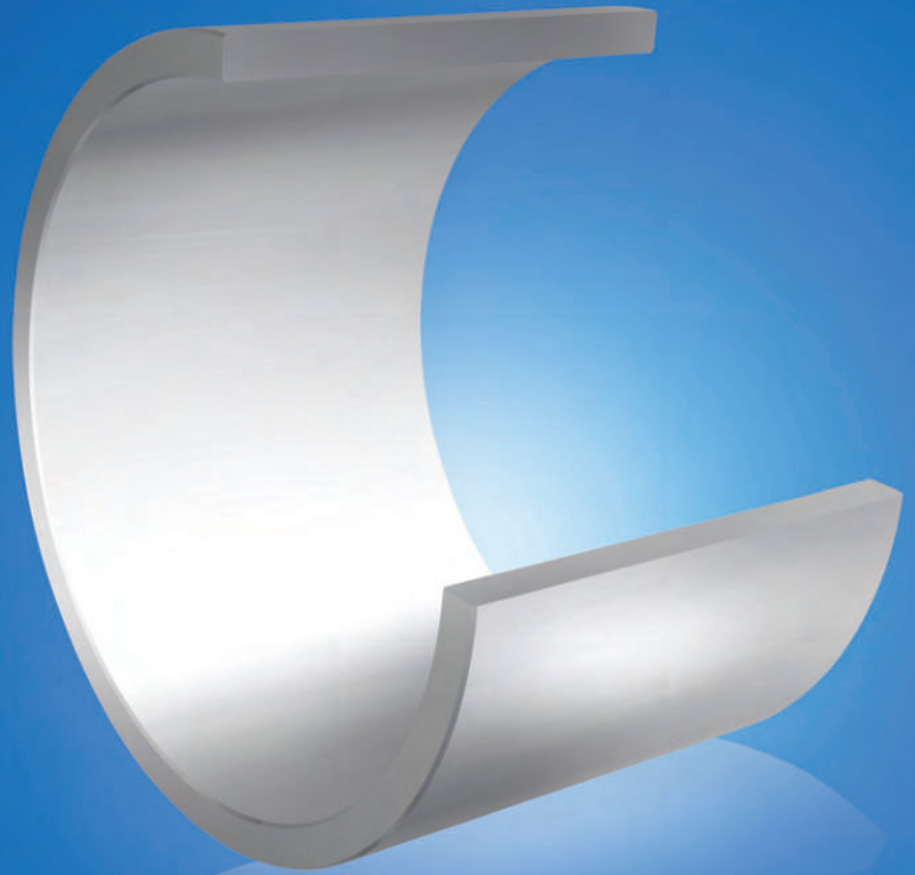


**ZON™**  
BEARINGS FOR YOUR FUTURE



Bagues intérieures





## BEARINGS FOR YOUR FUTURE

**Les roulements Zen sont fabriqués en accord avec les normes de qualité de plus haut niveau pour des applications standard et non standard. Notre service technique peut ajuster n'importe quel roulement non standard afin de l'adapter à vos nécessités, quelle qu'elle soit la quantité.**

En plus de notre gamme de roulements miniature de plus de 1000 références, entre 1mm. et 10 mm., notre catalogue de produits contient aussi des roulements à section mince, des butées à billes, des roulements série populaire ainsi qu'un infinité de roulements non standard. Nous sommes en mesure de concevoir des roulements en concordance avec vos exigences en utilisant des nouveaux matériaux, tels que : céramiques ou aciers spéciaux pour différentes applications industrielles, médicales, chimiques ou de transformation alimentaire.

N'hésitez pas à contacter notre personnel commercial qualifié si jamais vous avez besoin d'une référence qui n'apparaît pas sur notre catalogue.



### Bagues intérieures



Lubrification à l'huile



Conçu pour supporter de lourdes charges

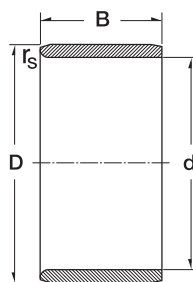


L'entreprise Zen Ball Bearings Shanghai a été gratifiée du certificat Aleman de qualité ISO TUV Rheinland pour l'inspection de ses propres produits Zen.

Ce certificat est l'une des plus hautes reconnaissances qu'une entreprise puisse atteindre dans notre secteur. Il s'agit d'un prix reconnu internationalement qui authentifie un haut niveau de qualité, orientation client et amélioration continue.

[www.zen.biz](http://www.zen.biz)

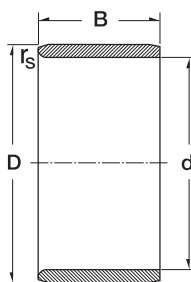
# Bagues intérieures



3

Dimension (mm)			Designation/Type	Shaft Diameter (mm)	Mass (g) approx.
d	D	B			
5.0	8.0	12.0	IR 5X8X12	5.0	2,8 g
5.0	8.0	16.0	IR 5X8X16	5.0	3,7 g
6.0	9.0	12.0	IR 6X9X12	6.0	3 g
6.0	9.0	16.0	IR 6X9X16	6.0	4,3 g
7.0	10.0	12.0	IR 7X10X12	7.0	4 g
7.0	10.0	10.5	IR 7X10X10.5	7.0	3,1 g
7.0	10.0	10.5	LR 7X10X10.5	7.0	3,1 g
7.0	10.0	16.0	IR 7X10X16	7.0	4,9 g
8.0	12.0	12.5	IR 8X12X12.5	8.0	6 g
8.0	12.0	10.5	IR 8X12X10.5	8.0	5 g
8.0	12.0	10.5	LR 8X12X10.5	8.0	5 g
9.0	12.0	12.0	IR 9X12X12	9.0	4,4 g
9.0	12.0	16.0	IR 9X12X16	9.0	6 g
10.0	13.0	12.5	IR 10X13X12.5	10.0	5 g
10.0	13.0	12.5	LR 10X13X12.5	10.0	5,2 g
10.0	14.0	13.0	IR 10X14X13	10.0	7,4 g
10.0	14.0	16.0	IR 10X14X16	10.0	9,2 g
10.0	14.0	20.0	IR 10X14X20	10.0	11,5 g
12.0	15.0	12.5	IR 12X15X12.5	12.0	6 g
12.0	16.0	12.0	IR 12X16X12	12.0	8 g
12.0	15.0	12.0	IR 12X15X12	12.0	5,7 g
12.0	15.0	12.5	LR 12X15X12.5	12.0	6,1 g
12.0	15.0	16.0	IR 12X15X16	12.0	7,6 g
12.0	15.0	16.5	IR 12X15X16.5	12.0	8,1 g
12.0	15.0	16.5	LR 12X15X16.5	12.0	8,1 g
12.0	15.0	22.5	IR 12X15X22.5	12.0	10,9 g
12.0	15.0	22.5	LR 12X15X22.5	12.0	10,9 g
12.0	16.0	13.0	IR 12X16X13	12.0	8,5 g
12.0	16.0	16.0	IR 12X16X16	12.0	10,7 g
12.0	16.0	20.0	IR 12X16X20	12.0	13,5 g

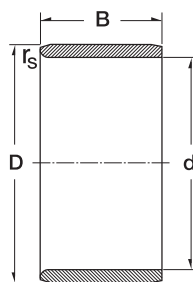
# Bagues intérieures



4

Dimension (mm)			Designation/Type	Shaft Diameter (mm)	Mass (g) approx.
d	D	B			
12.0	16.0	22.0	IR 12X16X22	12.0	14,9 g
14.0	17.0	17.0	IR 14X17X17	14.0	9,5 g
15.0	18.0	16.5	IR 15X18X16.5	15.0	10 g
15.0	20.0	23.0	IR 15X20X23	15.0	25 g
15.0	18.0	12.5	LR 15X18X12.5	15.0	7,2 g
15.0	18.0	16.0	IR 15X18X16	15.0	9,4 g
15.0	18.0	16.5	LR 15X18X16.5	15.0	9,8 g
15.0	19.0	16.0	IR 15X19X16	15.0	12,9 g
15.0	19.0	20.0	IR 15X19X20	15.0	16,3 g
15.0	20.0	13.0	IR 15X20X13	15.0	13,5 g
17.0	20.0	16.0	IR 17X20X16	17.0	11 g
17.0	20.0	20.0	IR 17X20X20	17.0	14 g
17.0	21.0	20.0	IR 17X21X20	17.0	19 g
17.0	22.0	13.0	IR 17X22X13	17.0	15 g
17.0	20.0	16.5	IR 17X20X16.5	17.0	11,1 g
17.0	20.0	16.5	LR 17X20X16.5	17.0	11,1 g
17.0	20.0	20.5	IR 17X20X20.5	17.0	13,8 g
17.0	20.0	20.5	LR 17X20X20.5	17.0	13,8 g
17.0	20.0	30.5	IR 17X20X30.5	17.0	20,6 g
17.0	20.0	30.5	LR 17X20X30.5	17.0	20,6 g
17.0	21.0	16.0	IR 17X21X16	17.0	15 g
17.0	22.0	16.0	IR 17X22X16	17.0	18,4 g
17.0	22.0	23.0	IR 17X22X23	17.0	27,1 g
17.0	24.0	20.0	IR 17X24X20	17.0	33,8 g
20.0	24.0	20.0	IR 20X24X20	20.0	21 g
20.0	25.0	12.5	LR 20X25X12.5	20.0	17 g
20.0	25.0	20.5	LR 20X25X20.5	20.0	28 g
20.0	24.0	16.0	IR 20X24X16	20.0	15 g
20.0	25.0	16.5	LR 20X25X16.5	20.0	21,7 g
20.0	25.0	17.0	IR 20X25X17	20.0	25 g

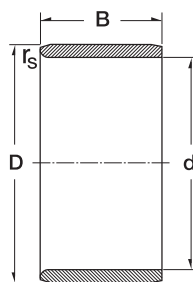
# Bagues intérieures



5

Dimension (mm)			Designation/Type	Shaft Diameter (mm)	Mass (g) approx.
d	D	B			
20.0	25.0	20.0	IR 20X25X20	20.0	27,5 g
20.0	25.0	20.5	IR 20X25X20.5	20.0	27,4 g
20.0	25.0	26.5	IR 20X25X26.5	20.0	38 g
20.0	25.0	26.5	LR 20X25X26.5	20.0	38 g
20.0	25.0	30.0	IR 20X25X30	20.0	40,4 g
20.0	25.0	38.5	IR 20X25X38.5	20.0	52,5 g
20.0	25.0	38.5	LR 20X25X38.5	20.0	52,5 g
20.0	28.0	20.0	IR 20X28X20	20.0	45,2 g
22.0	28.0	20.5	IR 22X28X20.5	22.0	36 g
22.0	26.0	16.0	IR 22X26X16	22.0	18,2 g
22.0	26.0	20.0	IR 22X26X20	22.0	23 g
22.0	28.0	17.0	IR 22X28X17	22.0	29,5 g
22.0	28.0	20.0	IR 22X28X20	22.0	35 g
22.0	28.0	20.5	LR 22X28X20.5	22.0	36 g
22.0	28.0	30.0	IR 22X28X30	22.0	54,4 g
25.0	30.0	12.5	IR 25X30X12.5	25.0	20 g
25.0	30.0	20.0	IR 25X30X20	25.0	33 g
25.0	30.0	32.0	IR 25X30X32	25.0	54 g
25.0	29.0	20.0	IR 25X29X20	25.0	25,9 g
25.0	29.0	30.0	IR 25X29X30	25.0	39,3 g
25.0	30.0	12.5	LR 25X30X12.5	25.0	20 g
25.0	30.0	16.5	LR 25X30X16.5	25.0	26,7 g
25.0	30.0	20.5	IR 25X30X20.5	25.0	33,4 g
25.0	30.0	20.5	LR 25X30X20.5	25.0	33,4 g
25.0	30.0	26.5	IR 25X30X26.5	25.0	46 g
25.0	30.0	26.5	LR 25X30X26.5	25.0	46 g
25.0	30.0	30.0	IR 25X30X30	25.0	53 g
25.0	30.0	38.5	IR 25X30X38.5	25.0	64,5 g
25.0	30.0	38.5	LR 25X30X38.5	25.0	64,5 g
25.0	32.0	22.0	IR 25X32X22	25.0	52,5 g

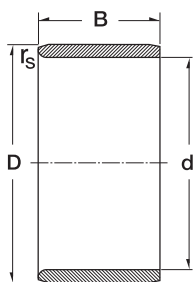
# Bagues intérieures



6

Dimension (mm)			Designation/Type	Shaft Diameter (mm)	Mass (g) approx.
d	D	B			
28.0	32.0	17.0	IR 28X32X17	28.0	24,5 g
28.0	32.0	20.0	IR 28X32X20	28.0	28,5 g
28.0	32.0	30.0	IR 28X32X30	28.0	43,5 g
30.0	35.0	16.0	IR 30X35X16	30.0	31 g
30.0	35.0	20.5	IR 30X35X20.5	30.0	39 g
30.0	35.0	30.0	IR 30X35X30	30.0	59 g
30.0	35.0	12.5	LR 30X35X12.5	30.0	23,3 g
30.0	35.0	13.0	IR 30X35X13	30.0	25 g
30.0	35.0	16.5	LR 30X35X16.5	30.0	31,4 g
30.0	35.0	17.0	IR 30X35X17	30.0	36 g
30.0	35.0	20.0	IR 30X35X20	30.0	39 g
30.0	35.0	20.5	LR 30X35X20.5	30.0	39,7 g
30.0	35.0	26.0	IR 30X35X26	30.0	50,4 g
30.0	37.0	18.0	IR 30X37X18	30.0	50 g
30.0	37.0	22.0	IR 30X37X22	30.0	61,6 g
32.0	37.0	20.0	IR 32X37X20	32.0	42 g
32.0	37.0	30.0	IR 32X37X30	32.0	62 g
32.0	40.0	20.0	IR 32X40X20	32.0	68 g
32.0	40.0	36.0	IR 32X40X36	32.0	124 g
33.0	37.0	13.0	IR 33X37X13	33.0	21,9 g
35.0	40.0	17.0	IR 35X40X17	35.0	39 g
35.0	40.0	20.0	IR 35X40X20	35.0	46 g
35.0	40.0	30.0	IR 35X40X30	35.0	68 g
35.0	40.0	12.5	LR 35X40X12.5	35.0	27,2 g
35.0	40.0	16.5	LR 35X40X16.5	35.0	37,4 g
35.0	40.0	20.5	IR 35X40X20.5	35.0	46,1 g
35.0	40.0	20.5	LR 35X40X20.5	35.0	46,1 g
35.0	42.0	36.0	IR 35X42X36	35.0	117 g
35.0	43.0	22.0	IR 35X43X22	35.0	82 g
38.0	43.0	20.0	IR 38X43X20	38.0	48,1 g

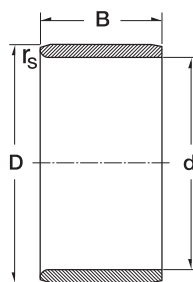
# Bagues intérieures



7

Dimension (mm)			Designation/Type	Shaft Diameter (mm)	Mass (g) approx.
d	D	B			
38.0	43.0	30.0	IR 38X43X30	38.0	73,6 g
40.0	45.0	10.0	IR 40X45X10	40.0	26 g
40.0	45.0	20.0	IR 40X45X20	40.0	51 g
40.0	45.0	30.0	IR 40X45X30	40.0	77 g
40.0	45.0	16.5	LR 40X45X16.5	40.0	41,4 g
40.0	45.0	17.0	IR 40X45X17	40.0	42,5 g
40.0	45.0	20.5	IR 40X45X20.5	40.0	51,8 g
40.0	45.0	20.5	LR 40X45X20.5	40.0	51,8 g
40.0	48.0	22.0	IR 40X48X22	40.0	91,6 g
40.0	48.0	40.0	IR 40X48X40	40.0	170 g
40.0	50.0	22.0	IR 40X50X22	40.0	118 g
42.0	47.0	20.0	IR 42X47X20	42.0	52,8 g
42.0	47.0	30.0	IR 42X47X30	42.0	81 g
45.0	50.0	20.0	IR 45X50X20	45.0	57 g
45.0	50.0	35.0	IR 45X50X35	45.0	101 g
45.0	52.0	22.0	IR 45X52X22	45.0	88 g
45.0	50.0	20.5	LR 45X50X20.5	45.0	58,8 g
45.0	50.0	25.0	IR 45X50X25	45.0	70,8 g
45.0	50.0	25.5	IR 45X50X25.5	45.0	75,1 g
45.0	50.0	25.5	LR 45X50X25.5	45.0	75,1 g
45.0	52.0	40.0	IR 45X52X40	45.0	164 g
45.0	55.0	22.0	IR 45X55X22	45.0	129 g
50.0	55.0	20.0	IR 50X55X20	50.0	63 g
50.0	55.0	35.0	IR 50X55X35	50.0	112 g
50.0	58.0	22.0	IR 50X58X22	50.0	115 g
50.0	58.0	40.0	IR 50X58X40	50.0	209 g
50.0	60.0	25.0	IR 50X60X25	50.0	163 g
50.0	60.0	28.0	IR 50X60X28	50.0	183 g
50.0	55.0	20.5	LR 50X55X20.5	50.0	64,1 g
50.0	55.0	25.0	IR 50X55X25	50.0	78 g

# Bagues intérieures

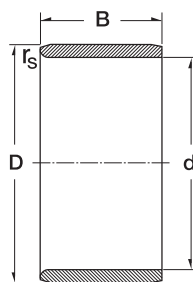


8

Dimension (mm)			Designation/Type	Shaft Diameter (mm)	Mass (g) approx.
d	D	B			
55.0	60.0	35.0	IR 55X60X35	55.0	121 g
55.0	60.0	25.0	IR 55X60X25	55.0	85,5 g
55.0	63.0	25.0	IR 55X63X25	55.0	141 g
55.0	63.0	45.0	IR 55X63X45	55.0	256 g
55.0	65.0	28.0	IR 55X65X28	55.0	198 g
60.0	68.0	45.0	IR 60X68X45	60.0	275 g
60.0	70.0	25.0	IR 60X70X25	60.0	195 g
60.0	70.0	60.0	IR 60X70X60	60.0	463 g
60.0	68.0	25.0	IR 60X68X25	60.0	152 g
60.0	68.0	35.0	IR 60X68X35	60.0	213 g
60.0	70.0	28.0	IR 60X70X28	60.0	215 g
65.0	72.0	45.0	IR 65X72X45	65.0	259 g
65.0	75.0	28.0	IR 65X75X28	65.0	236 g
65.0	72.0	25.0	IR 65X72X25	65.0	414 g
65.0	73.0	25.0	IR 65X73X25	65.0	164 g
65.0	73.0	35.0	IR 65X73X35	65.0	231 g
70.0	80.0	25.0	IR 70X80X25	70.0	224 g
70.0	80.0	54.0	IR 70X80X54	70.0	480 g
70.0	80.0	30.0	IR 70X80X30	70.0	267 g
70.0	80.0	35.0	IR 70X80X35	70.0	312 g
75.0	85.0	25.0	IR 75X85X25	75.0	238 g
75.0	85.0	30.0	IR 75X85X30	75.0	287 g
75.0	85.0	35.0	IR 75X85X35	75.0	336 g
75.0	85.0	54.0	IR 75X85X54	75.0	520 g
80.0	90.0	35.0	IR 80X90X35	80.0	355 g
80.0	90.0	25.0	IR 80X90X25	80.0	253 g
80.0	90.0	30.0	IR 80X90X30	80.0	304 g
80.0	90.0	54.0	IR 80X90X54	80.0	556 g
85.0	95.0	26.0	IR 85X95X26	85.0	277 g
85.0	95.0	36.0	IR 85X95X36	85.0	388 g



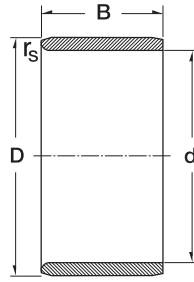
# Bagues intérieures



9

Dimension (mm)			Designation/Type	Shaft Diameter (mm)	Mass (g) approx.
d	D	B			
85.0	100.0	35.0	IR 85X100X35	85.0	582 g
85.0	100.0	63.0	IR 85X100X63	85.0	1054 g
90.0	100.0	26.0	IR 90X100X26	90.0	294 g
90.0	100.0	30.0	IR 90X100X30	90.0	340 g
90.0	100.0	36.0	IR 90X100X36	90.0	406 g
90.0	105.0	35.0	IR 90X105X35	90.0	610 g
90.0	105.0	63.0	IR 90X105X63	90.0	1110 g
95.0	105.0	26.0	IR 95X105X26	95.0	313 g
95.0	105.0	36.0	IR 95X105X36	95.0	431 g
95.0	110.0	35.0	IR 95X110X35	95.0	657 g
95.0	110.0	63.0	IR 95X110X63	95.0	1170 g
100.0	110.0	30.0	IR 100X110X30	100.0	350 g
100.0	110.0	40.0	IR 100X110X40	100.0	505 g
100.0	115.0	40.0	IR 100X115X40	100.0	797 g
110.0	120.0	30.0	IR 110X120X30	110.0	409 g
110.0	125.0	40.0	IR 110X125X40	110.0	840 g
120.0	130.0	30.0	IR 120X130X30	120.0	442 g
120.0	135.0	45.0	IR 120X135X45	120.0	1044 g
130.0	145.0	35.0	IR 130X145X35	130.0	855 g
130.0	150.0	50.0	IR 130X150X30	130.0	1690 g
140.0	155.0	35.0	IR 140X155X35	140.0	917 g
140.0	160.0	50.0	IR 140X160X50	140.0	1800 g
150.0	165.0	40.0	IR 150X165X40	150.0	1122 g
160.0	175.0	40.0	IR 160X175X40	160.0	1200 g
170.0	185.0	45.0	IR 170X185X45	170.0	1441 g
180.0	195.0	45.0	IR 180X195X45	180.0	1510 g
190.0	210.0	50.0	IR 190X210X50	190.0	2410 g
200.0	220.0	50.0	IR 200X220X50	200.0	2518 g
220.0	240.0	50.0	IR 220X240X50	220.0	2753 g
240.0	265.0	60.0	IR 240X265X60	240.0	4600 g

## Bagues intérieures



10

Dimension (mm)			Designation/Type	Shaft Diameter (mm)	Mass (g) approx.
d	D	B			
260.0	285.0	60.0	IR 260X285X60	260.0	4980 g
280.0	305.0	69.0	IR 280X305X69	280.0	6100 g
300.0	330.0	80.0	IR 300X330X80	300.0	9200 g
320.0	350.0	80.0	IR 320X350X80	320.0	9800 g
340.0	370.0	80.0	IR 340X370X80	340.0	10200 g
360.0	390.0	80.0	IR 360X390X80	360.0	10900 g
380.0	415.0	100.0	IR 380X415X100	380.0	16700 g

[www.zen.biz](http://www.zen.biz)

Tous droits réservés.  
Aucune partie du catalogue ne  
peut être copiée, extraite ou  
modifiée sans autorisation explicite  
du détenteur du copyright.

v.10 / 18



Bearings for your future