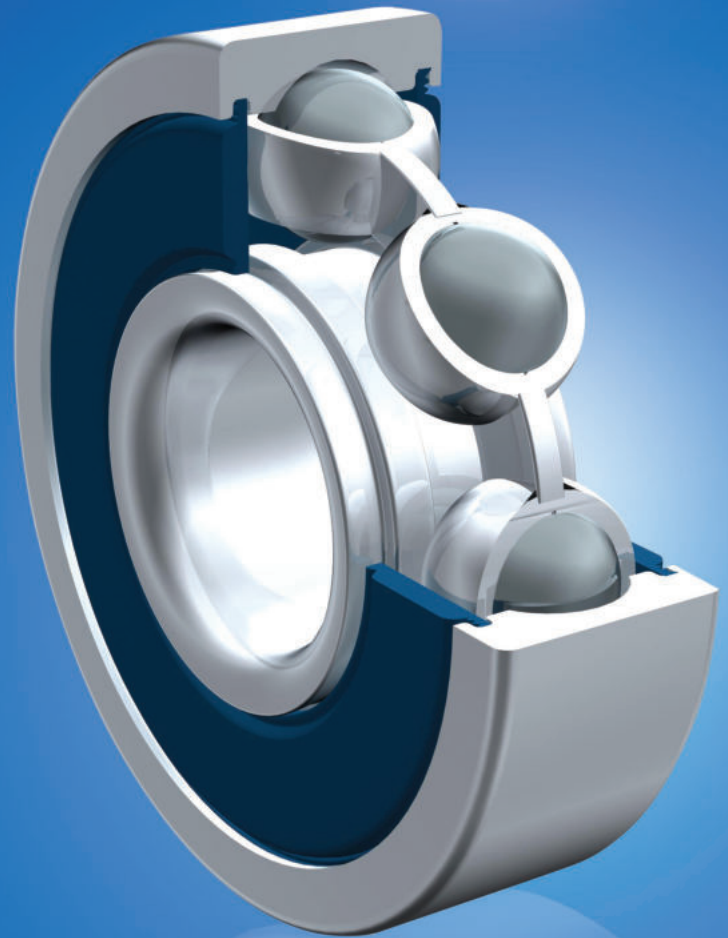


ZON™

BEARINGS FOR YOUR FUTURE



Rostfreie Standardrillenkugellager
Stainless Popular Metric Series



TÜVRheinland®
CERT
Certified ISO 2008
Management System
according to ISO 9001:2008



BEARINGS FOR YOUR FUTURE

Zen Ball Bearings are manufactured to the highest quality for standard and non-standard applications. Our technical department can modify any non-standard bearings to your specific requirements, regardless of quantity.

Apart from our extensive miniature ball bearing range of more than 1000 different types, ranging from 1-10 mm bore (Including inch dimensions), our range also includes Thin section, Three part thrust, Popular metric and any kind of non standard bearing. We are able to design bearings according to your requirements using new materials like ceramic or special steels for applications in Industry, Medicine, Chemistry and Food Processing.

Our technical department can modify any non-standard bearings to your specific requirements, even for small quantities.

For any items not listed in our catalogue, please contact our experienced sales team.



Zen Ball Bearings Shanghai has been awarded the German ISO TUV Rheinland certification for inspection of ZEN products.

This certification is the highest standard a business in our industry can achieve. It is internationally recognised as a guarantee of quality, customer focus and continual improvement.



Rostfreie Standarddrillen-Kugellager Stainless Steel Popular Metric Series



Ölschmierung
Oil lubrication



Fettschmierung
Grease lubrication



Wetterbeständig
Outdoor durability



Geeignet für niedrige Temperaturen
Suitable for low temperatures



Lösungsmittelresistent
Chemical solvent resistant

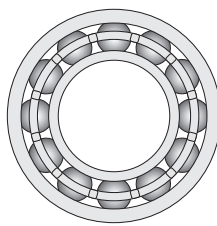
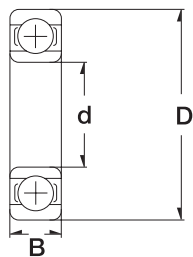


Gummidichtscheiben verfügbar
Rubber seal option available



Metalldeckscheiben verfügbar
Metal shield option available

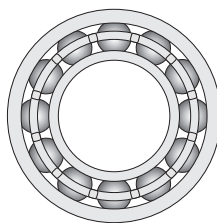
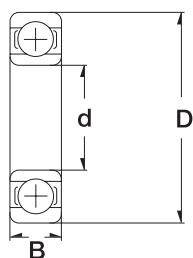
Rostfreie Standarddrillenugellager / Stainless Steel Popular Metric Series



3

| standard | | flanged | Designation/Type | | | | | * Load Rating | | Weight (g) approx. |
|----------------|------|---------|------------------|-----------|------------|-----------|-------------------|---------------|-------------|--------------------|
| Dimension (mm) | | | | | | | | C, dyn. N | C, stat. N | |
| d | D | B | Open | 2Z | 2RS | 2TS | in C3 | | | |
| 10.0 | 26.0 | 8.0 | S6000 | S6000-2Z | S6000-2RS | S6000-2TS | avail. / lieferb. | 4620 | 1990 | 19 g |
| 10.0 | 26.0 | 8.0 | SF6000 | SF6000-2Z | SF6000-2RS | - | - | 3234 | 1393 | 21 g |
| 10.0 | 28.0 | 8.0 | S16100 | S16100-2Z | S16100-2RS | - | avail. / lieferb. | on request | auf Anfrage | 22 g |
| 10.0 | 30.0 | 9.0 | S6200 | S6200-2Z | S6200-2RS | S6200-2TS | avail. / lieferb. | 5070 | 2360 | 32 g |
| 10.0 | 30.0 | 9.0 | SF6200 | SF6200-2Z | SF6200-2RS | - | - | 5070 | 2360 | 35 g |
| 10.0 | 30.0 | 14.0 | - | - | S62200-2RS | - | avail. / lieferb. | on request | auf Anfrage | 40 g |
| 10.0 | 35.0 | 11.0 | S6300 | S6300-2Z | S6300-2RS | - | avail. / lieferb. | 8060 | 3400 | 53 g |
| 10.0 | 35.0 | 17.0 | - | - | S62300-2RS | - | avail. / lieferb. | on request | auf Anfrage | 60 g |
| 12.0 | 28.0 | 8.0 | S6001 | S6001-2Z | S6001-2RS | S6001-2TS | avail. / lieferb. | 5070 | 2360 | 22 g |
| 12.0 | 28.0 | 8.0 | SF6001 | SF6001-2Z | SF6001-2RS | - | - | 5070 | 2360 | 24 g |
| 12.0 | 30.0 | 8.0 | S16001 | S16001-2Z | S16001-2RS | - | avail. / lieferb. | on request | auf Anfrage | 22 g |
| 12.0 | 32.0 | 10.0 | S6201 | S6201-2Z | S6201-2RS | S6201-2TS | avail. / lieferb. | 6870 | 3100 | 37 g |
| 12.0 | 32.0 | 10.0 | SF6201 | SF6201-2Z | SF6201-2RS | - | - | 6870 | 3100 | 41 g |
| 12.0 | 32.0 | 14.0 | - | - | S62201-2RS | - | avail. / lieferb. | on request | auf Anfrage | 45 g |
| 12.0 | 37.0 | 12.0 | S6301 | S6301-2Z | S6301-2RS | - | avail. / lieferb. | 9750 | 4150 | 60 g |
| 12.0 | 37.0 | 17.0 | - | - | S62301-2RS | - | avail. / lieferb. | on request | auf Anfrage | 70 g |
| 15.0 | 32.0 | 8.0 | S16002 | S16002-2Z | S16002-2RS | - | avail. / lieferb. | on request | auf Anfrage | 25 g |
| 15.0 | 32.0 | 9.0 | S6002 | S6002-2Z | S6002-2RS | S6002-2TS | avail. / lieferb. | 5590 | 2850 | 30 g |
| 15.0 | 32.0 | 9.0 | SF6002 | SF6002-2Z | SF6002-2RS | - | - | 5590 | 2850 | 33 g |
| 15.0 | 35.0 | 11.0 | S6202 | S6202-2Z | S6202-2RS | S6202-2TS | avail. / lieferb. | 7800 | 3100 | 45 g |
| 15.0 | 35.0 | 11.0 | SF6202 | SF6202-2Z | SF6202-2RS | - | - | 7800 | 3100 | 50 g |
| 15.0 | 35.0 | 14.0 | - | - | S62202-2RS | - | avail. / lieferb. | on request | auf Anfrage | 54 g |
| 15.0 | 42.0 | 13.0 | S6302 | S6302-2Z | S6302-2RS | - | avail. / lieferb. | 11400 | 5400 | 82 g |
| 15.0 | 42.0 | 17.0 | - | - | S62302-2RS | - | avail. / lieferb. | on request | auf Anfrage | 110 g |
| 17.0 | 35.0 | 8.0 | S16003 | S16003-2Z | S16003-2RS | - | avail. / lieferb. | on request | auf Anfrage | 32 g |
| 17.0 | 35.0 | 10.0 | S6003 | S6003-2Z | S6003-2RS | S6003-2TS | avail. / lieferb. | 6050 | 3250 | 39 g |
| 17.0 | 40.0 | 12.0 | S6203 | S6203-2Z | S6203-2RS | S6203-2TS | avail. / lieferb. | 9650 | 4750 | 65 g |

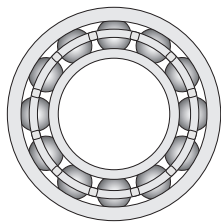
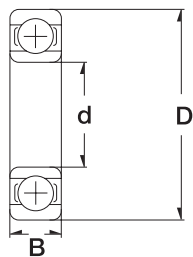
Rostfreie Standarddrillenugellager / Stainless Steel Popular Metric Series



4

| standard | | flanged | Designation/Type | | | | | * Load Rating | | Weight (g) approx. | |
|----------------|------|---------|------------------|-----------|------------|-----------|-------------------|---------------|-------------|--------------------|--|
| Dimension (mm) | | | | | | | | | | | |
| d | D | B | Open | 2Z | 2RS | 2TS | in C3 | C, dyn. N | C, stat. N | | |
| 17.0 | 40.0 | 16.0 | - | - | S62203-2RS | - | avail. / lieferb. | on request | auf Anfrage | 83 g | |
| 17.0 | 47.0 | 14.0 | S6303 | S6303-2Z | S6303-2RS | - | avail. / lieferb. | 13500 | 6550 | 120 g | |
| 17.0 | 47.0 | 19.0 | - | - | S62303-2RS | - | avail. / lieferb. | on request | auf Anfrage | 150 g | |
| 20.0 | 42.0 | 8.0 | S16004 | S16004-2Z | S16004-2RS | - | avail. / lieferb. | on request | auf Anfrage | 50 g | |
| 20.0 | 42.0 | 12.0 | S6004 | S6004-2Z | S6004-2RS | S6004-2TS | avail. / lieferb. | 9360 | 5000 | 69 g | |
| 20.0 | 47.0 | 14.0 | S6204 | S6204-2Z | S6204-2RS | S6204-2TS | avail. / lieferb. | 12700 | 6550 | 110 g | |
| 20.0 | 47.0 | 18.0 | - | - | S62204-2RS | - | avail. / lieferb. | on request | auf Anfrage | 130 g | |
| 20.0 | 52.0 | 15.0 | S6304 | S6304-2Z | S6304-2RS | - | avail. / lieferb. | 15900 | 7800 | 140 g | |
| 20.0 | 52.0 | 21.0 | - | - | S62304-2RS | - | avail. / lieferb. | on request | auf Anfrage | 200 g | |
| 25.0 | 47.0 | 8.0 | S16005 | S16005-2Z | S16005-2RS | - | avail. / lieferb. | on request | auf Anfrage | 60 g | |
| 25.0 | 47.0 | 12.0 | S6005 | S6005-2Z | S6005-2RS | - | avail. / lieferb. | 11200 | 6550 | 80 g | |
| 25.0 | 52.0 | 15.0 | S6205 | S6205-2Z | S6205-2RS | - | avail. / lieferb. | 14000 | 7800 | 130 g | |
| 25.0 | 52.0 | 18.0 | - | - | S62205-2RS | - | avail. / lieferb. | on request | auf Anfrage | 150 g | |
| 25.0 | 62.0 | 17.0 | S6305 | S6305-2Z | S6305-2RS | - | avail. / lieferb. | 22500 | 11600 | 230 g | |
| 25.0 | 62.0 | 24.0 | - | - | S62305-2RS | - | avail. / lieferb. | on request | auf Anfrage | 320 g | |
| 30.0 | 55.0 | 13.0 | S6006 | S6006-2Z | S6006-2RS | - | avail. / lieferb. | 13300 | 8300 | 120 g | |
| 30.0 | 62.0 | 16.0 | S6206 | S6206-2Z | S6206-2RS | - | avail. / lieferb. | 19500 | 11200 | 200 g | |
| 30.0 | 72.0 | 19.0 | S6306 | S6306-2Z | S6306-2RS | - | avail. / lieferb. | 28100 | 16000 | 350 g | |
| 35.0 | 62.0 | 14.0 | S6007 | S6007-2Z | S6007-2RS | - | avail. / lieferb. | 15900 | 10200 | 160 g | |
| 35.0 | 72.0 | 17.0 | S6207 | S6207-2Z | S6207-2RS | - | avail. / lieferb. | 25500 | 15300 | 290 g | |
| 35.0 | 80.0 | 21.0 | S6307 | S6307-2Z | S6307-2RS | - | avail. / lieferb. | on request | auf Anfrage | 450 g | |
| 40.0 | 68.0 | 15.0 | S6008 | S6008-2Z | S6008-2RS | - | avail. / lieferb. | 16800 | 11600 | 190 g | |
| 40.0 | 80.0 | 18.0 | S6208 | S6208-2Z | S6208-2RS | - | avail. / lieferb. | 30700 | 19000 | 370 g | |
| 40.0 | 90.0 | 23.0 | S6308 | S6308-2Z | S6308-2RS | - | avail. / lieferb. | 33200 | 19000 | 460 g | |

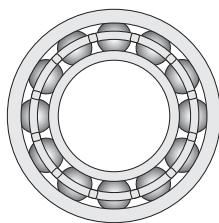
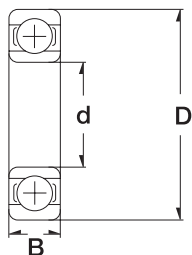
Rostfreie Standarddrillenugellager / Stainless Steel Popular Metric Series



5

| standard | | flanged | Designation/Type | | | | | * Load Rating | | Weight (g) approx. |
|----------------|-------|---------|------------------|----------|-----------|-----|-------------------|---------------|-------------|--------------------|
| Dimension (mm) | | | | | | | | | | |
| d | D | B | Open | 2Z | 2RS | 2TS | in C3 | C, dyn. N | C, stat. N | |
| 45.0 | 75.0 | 16.0 | S6009 | S6009-2Z | S6009-2RS | - | avail. / lieferb. | 20860 | 14600 | 250 g |
| 45.0 | 85.0 | 19.0 | S6209 | S6209-2Z | S6209-2RS | - | avail. / lieferb. | 33200 | 21600 | 410 g |
| 50.0 | 80.0 | 16.0 | S6010 | S6010-2Z | S6010-2RS | - | avail. / lieferb. | 21600 | 16000 | 260 g |
| 50.0 | 90.0 | 20.0 | S6210 | S6210-2Z | S6210-2RS | - | avail. / lieferb. | 35100 | 23200 | 460 g |
| 50.0 | 110.0 | 27.0 | S6310 | S6310-2Z | S6310-2RS | - | avail. / lieferb. | on request | auf Anfrage | 1060 g |
| 55.0 | 90.0 | 18.0 | S6011 | - | S6011-2RS | - | avail. / lieferb. | 28100 | 21100 | 390 g |
| 55.0 | 100.0 | 21.0 | S6211 | - | S6211-2RS | - | avail. / lieferb. | 43600 | 29000 | 610 g |
| 55.0 | 120.0 | 29.0 | S6311 | - | S6311-2RS | - | avail. / lieferb. | on request | auf Anfrage | 1350 g |
| 60.0 | 95.0 | 18.0 | S6012 | - | S6012-2RS | - | avail. / lieferb. | 29600 | 23200 | 420 g |
| 60.0 | 110.0 | 22.0 | S6212 | - | S6212-2RS | - | avail. / lieferb. | 47500 | 32500 | 780 g |
| 60.0 | 130.0 | 31.0 | S6312 | - | S6312-2RS | - | avail. / lieferb. | on request | auf Anfrage | 1690 g |
| 65.0 | 100.0 | 18.0 | S6013 | - | S6013-2RS | - | avail. / lieferb. | 30700 | 25000 | 440 g |
| 65.0 | 120.0 | 23.0 | S6213 | - | S6213-2RS | - | avail. / lieferb. | 55900 | 40500 | 990 g |
| 65.0 | 140.0 | 33.0 | S6313 | - | S6313-2RS | - | avail. / lieferb. | on request | auf Anfrage | 2070 g |
| 70.0 | 110.0 | 20.0 | S6014 | - | S6014-2RS | - | avail. / lieferb. | 29680 | 24200 | 580 g |
| 70.0 | 125.0 | 24.0 | S6214 | - | S6214-2RS | - | avail. / lieferb. | 46790 | 37590 | 1080 g |
| 70.0 | 150.0 | 35.0 | S6314 | - | S6314-2RS | - | avail. / lieferb. | on request | auf Anfrage | 2490 g |
| 75.0 | 115.0 | 20.0 | S6015 | - | S6015-2RS | - | avail. / lieferb. | 30910 | 26600 | 610 g |
| 75.0 | 130.0 | 25.0 | S6215 | - | S6215-2RS | - | avail. / lieferb. | 50850 | 41260 | 1180 g |
| 75.0 | 160.0 | 37.0 | S6315 | - | S6315-2RS | - | avail. / lieferb. | on request | auf Anfrage | 2980 g |
| 80.0 | 125.0 | 22.0 | S6016 | - | S6016-2RS | - | avail. / lieferb. | on request | auf Anfrage | 850 g |
| 80.0 | 140.0 | 26.0 | S6216 | - | S6216-2RS | - | avail. / lieferb. | on request | auf Anfrage | 1400 g |
| 80.0 | 170.0 | 39.0 | S6316 | - | S6316-2RS | - | avail. / lieferb. | on request | auf Anfrage | 3580 g |
| 90.0 | 140.0 | 24.0 | S6018 | - | S6018-2RS | - | avail. / lieferb. | on request | auf Anfrage | 1150 g |

Rostfreie Standarddrillenkugellager / Stainless Steel Popular Metric Series



6

| standard | | flanged | Designation/Type | | | | | * Load Rating | | Weight (g) approx. |
|----------------|-------|---------|------------------|----|-----------|-----|-------------------|---------------|-------------|--------------------|
| Dimension (mm) | | | | | | | | | | |
| d | D | B | Open | 2Z | 2RS | 2TS | in C3 | C, dyn. N | C, stat. N | |
| 90.0 | 160.0 | 30.0 | S6218 | - | S6218-2RS | - | avail. / lieferb. | on request | auf Anfrage | 2150 g |
| 100.0 | 150.0 | 24.0 | S6020 | - | S6020-2RS | - | avail. / lieferb. | on request | auf Anfrage | 1250 g |
| 100.0 | 180.0 | 34.0 | S6220 | - | S6220-2RS | - | avail. / lieferb. | on request | auf Anfrage | 3150 g |
| 110.0 | 170.0 | 28.0 | S6022 | - | S6022-2RS | - | avail. / lieferb. | on request | auf Anfrage | 1950 g |
| 110.0 | 200.0 | 38.00 | S6222 | - | S6700-2RS | - | avail. / lieferb. | on request | auf Anfrage | 4290 g |
| 120.0 | 180.0 | 28.0 | S6024 | - | S6024-2RS | - | avail. / lieferb. | on request | auf Anfrage | 2880 g |
| 120.0 | 215.0 | 40.00 | S6224 | - | S6224-2RS | - | avail. / lieferb. | on request | auf Anfrage | 5500 g |
| 130.0 | 200.0 | 33.00 | S6026 | - | S6026-2RS | - | avail. / lieferb. | on request | auf Anfrage | 4550 g |
| 130.0 | 230.0 | 40.00 | S6226 | - | S6226-2RS | - | avail. / lieferb. | on request | auf Anfrage | 6340 g |
| 140.0 | 210.0 | 33.00 | S6028 | - | S6028-2RS | - | avail. / lieferb. | on request | auf Anfrage | 4630 g |
| 140.0 | 250.0 | 42.00 | S6228 | - | S6228-2RS | - | avail. / lieferb. | on request | auf Anfrage | 7700 g |
| 150.0 | 225.0 | 35.00 | S6030 | - | S6030-2RS | - | avail. / lieferb. | on request | auf Anfrage | 4290 g |
| 150.0 | 270.0 | 45.00 | S6230 | - | S6230-2RS | - | avail. / lieferb. | on request | auf Anfrage | 10250 g |

www.zen.biz

Alle Rechte vorbehalten, kein Teil des Katalogs darf in irgendeiner Form (Druck, Fotokopie, Mikrofilm oder in einem anderen Verfahren) ohne Genehmigung reproduziert oder unter Verwendung elektronischer Systeme verarbeitet, vervielfältigt oder verbreitet werden.

Copyright reserved. No part of the catalogue is to be copied, extracted or modified without explicit permission from the copyright holder.

v.10 / 18



Bearings for your future