

**ZON™**  
BEARINGS FOR YOUR FUTURE



**K Nadelkränze / K Needle Roller Bearing**





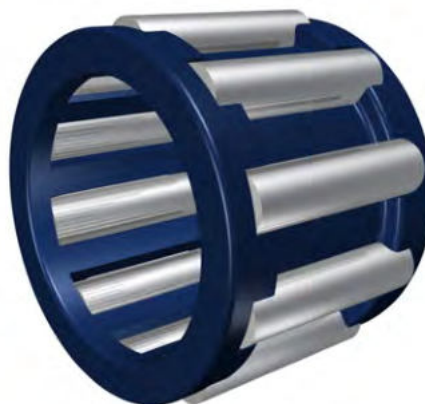
BEARINGS FOR YOUR FUTURE

**Zen Ball Bearings are manufactured to the highest quality for standard and non-standard applications. Our technical department can modify any non-standard bearings to your specific requirements, regardless of quantity.**

Apart from our extensive miniature ball bearing range of more than 1000 different types, ranging from 1-10 mm bore (Including inch dimensions), our range also includes Thin section, Three part thrust, Popular metric and any kind of non standard bearing. We are able to design bearings according to your requirements using new materials like ceramic or special steels for applications in Industry, Medicine, Chemistry and Food Processing.

Our technical department can modify any non-standard bearings to your specific requirements, even for small quantities.

For any items not listed in our catalogue, please contact our experienced sales team.



### K Nadelkränze K Needle Roller Bearing



Ölschmierung  
Oil lubrication



Geeignet für hohe drehzahlen  
Suitable for high speed applications



Geeignet für hohe tragzahlen  
Suitable for heavy load rating

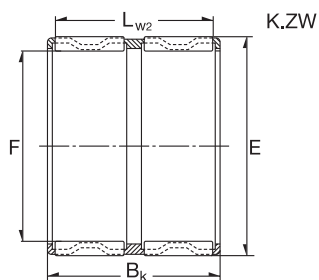
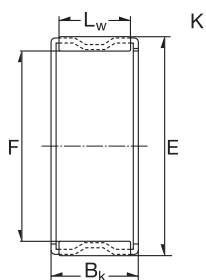
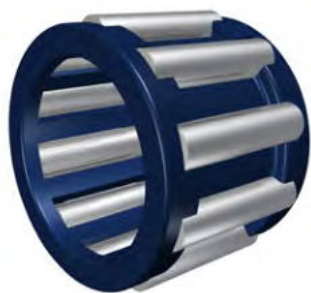


Zen Ball Bearings Shanghai has been awarded the German ISO TUV Rheinland certification for inspection of ZEN products.

This certification is the highest standard a business in our industry can achieve. It is internationally recognised as a guarantee of quality, customer focus and continual improvement.

[www.zen.biz](http://www.zen.biz)

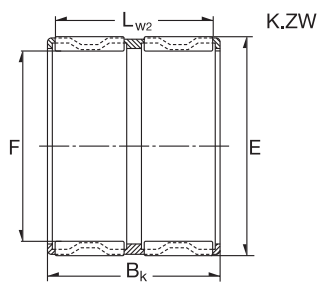
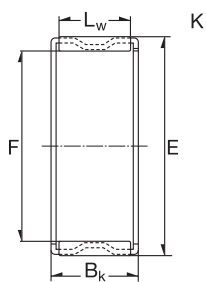
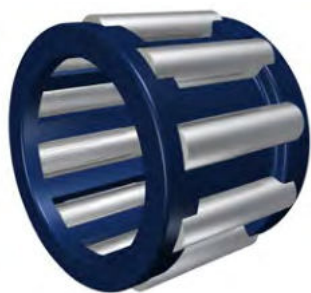
# K Nadelkränze / K Needle Roller Bearing



3

Dimension (mm)			Designation/Type	*Basic Load Rating		*LimitingSpeed x1000rpm Oil	Mass (g) approx.
F	E	BK		C, dyn. N	C, stat. N		
5.0	8.0	8.0	K 5X8X8 TN	2300	1880	37.0	>1 g
5.0	8.0	10.0	K 5X8X10 TN	2800	2450	37.0	>1 g
6.0	9.0	8.0	K 6X9X8 TN	2560	2240	35.0	>1 g
6.0	9.0	10.0	K 6X9X10 TN	3300	3100	35.0	1 g
6.0	10.0	13.0	K 6X9X13 TN	3500	2800	33.0	>1 g
7.0	10.0	8.0	K 7X10X8 TN	2750	2550	32.0	1 g
7.0	10.0	10.0	K 7-X10X10 TN	3350	3400	32.0	1 g
8.0	11.0	8.0	K 8X11X8 TN	3000	2900	30.0	1 g
8.0	11.0	10.0	K 8X11X10 TN	3830	3950	30.0	1 g
8.0	11.0	13.0	K 8X11X13 TN	5000	5700	30.0	1 g
8.0	12.0	10.0	K 8X12X10 TN	4900	4600	30.0	1 g
9.0	12.0	10.0	K 9X12X10 TN	4200	4700	30.0	1 g
9.0	12.0	13.0	K 9X12X13 TN	5500	6700	30.0	1 g
10.0	13.0	10.0	K 10X13X10 TN	4500	5250	27.0	1 g
10.0	13.0	13.0	K 10X13X13 TN	6000	7600	27.0	2 g
10.0	13.0	16.0	K 10X13X16 TN	6300	7800	27.0	2 g
10.0	14.0	10.0	K 10X14X10 TN	7000	7900	26.0	2 g
10.0	14.0	13.0	K 10X14X13 TN	8000	9100	27.0	4 g
10.0	16.0	12.0	K 10X16X12 TN	7000	9300	27.0	3 g
12.0	15.0	9.0	K 12X15X9 TN	4120	5210	25.0	2 g
12.0	15.0	10.0	K 12X15X10 TN	4320	5730	25.0	1 g
12.0	15.0	13.0	K 12X15X13 TN	6000	8100	25.0	2 g
12.0	16.0	8.0	K 12X16X8 TN	4200	4700	25.0	2 g
12.0	16.0	10.0	K 12X16X10 TN	6000	6900	25.0	3 g
12.0	16.0	13.0	K 12X16X13 TN	7900	9200	25.0	3 g
12.0	17.0	13.0	K 12X17X13 TN	9300	10000	24.0	4 g
12.0	18.0	12.0	K 12X18X12 TN	9800	8000	24.0	5 g
12.0	15.0	20.0	K 12X15X20 TN	8200	12000	25.0	3 g
14.0	17.0	10.0	K 14X17X10	5100	6800	23.0	4 g
14.0	17.0	17.0	K 14X17X17	9300	14000	23.0	6 g
14.0	18.0	10.0	K 14X18X10	6800	8300	23.0	4 g

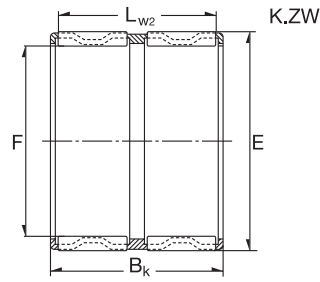
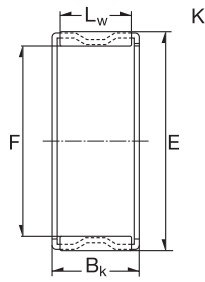
# K Nadelkränze / K Needle Roller Bearing



4

Dimension (mm)			Designation/Type	*Basic Load Rating		*LimitingSpeed x1000rpm Oil	Mass (g) approx.
F	E	BK		C, dyn. N	C, stat. N		
14.0	18.0	13.0	K 14X18X13	8100	9800	23.0	6 g
14.0	18.0	14.0	K 14X18X14	9200	12000	23.0	5 g
14.0	18.0	15.0	K 14X18X15	10000	13000	23.0	7 g
14.0	18.0	17.0	K 14X18X17	10500	13900	23.0	-
14.0	20.0	12.0	K 14X20X12	9900	10500	22.0	18 g
15.0	18.0	14.0	K 15X18X14	7500	11000	23.0	5 g
15.0	18.0	17.0	K 15X18X17	9600	15900	23.0	5 g
15.0	19.0	10.0	K 15X19X10	7200	9000	23.0	5 g
15.0	19.0	13.0	K 15X19X13	8300	9800	22.0	7 g
15.0	19.0	17.0	K 15X19X17	10300	15000	22.0	8 g
15.0	19.0	24.0	K 15X19X24	12800	20100	22.0	10 g
15.0	20.0	13.0	K 15X20X13	9700	11000	22.0	8 g
15.0	21.0	12.0	K 15X21X12	10000	13000	22.0	10 g
15.0	21.0	15.0	K 15X21X15	13800	16000	22.0	13 g
15.0	21.0	21.0	K 15X21X21	18000	24000	22.0	18 g
16.0	20.0	10.0	K 16X20X10	7600	9700	22.0	5 g
16.0	20.0	13.0	K 16X20X13	8700	11300	22.0	7 g
16.0	20.0	17.0	K 16X20X17	11200	16300	22.0	9 g
16.0	21.0	10.0	K 16X21X10	9000	12000	22.0	6 g
16.0	22.0	12.0	K 16X22X12	11000	12000	21.0	10 g
16.0	22.0	13.0	K 16X22X13	12000	13400	21.0	11 g
16.0	22.0	16.0	K 16X22X16	14300	17000	21.0	13 g
16.0	22.0	20.0	K 16X22X20	18000	22300	21.0	16 g
16.0	23.0	14.0	K 16X23X14	19000	21000	19.0	20 g
16.0	24.0	20.0	K 16X24X20	21100	23000	20.0	24 g
17.0	21.0	10.0	K 17X21X10	7900	10100	21.0	5 g
17.0	21.0	13.0	K 17X21X13	10000	14100	21.0	7 g
17.0	21.0	17.0	K 17X21X17	12000	17400	21.0	9 g
17.0	23.0	14.0	K 17X23X14	11000	15000	21.0	11 g
18.0	22.0	10.0	K 18X22X10	8200	9900	20.0	6 g
18.0	22.0	13.0	K 18X22X13	9000	12100	20.0	7 g

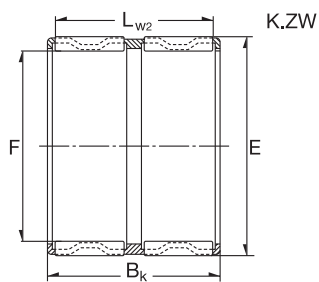
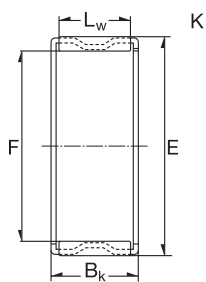
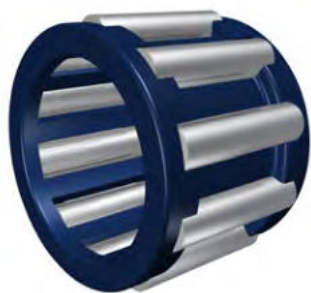
# K Nadelkränze / K Needle Roller Bearing



5

Dimension (mm)			Designation/Type	*Basic Load Rating		*LimitingSpeed x1000rpm Oil	Mass (g) approx.
F	E	BK		C, dyn. N	C, stat. N		
18.0	22.0	17.0	K 18X22X17	11900	17600	20.0	10 g
18.0	24.0	12.0	K 18X24X12	11200	12900	20.0	11 g
18.0	24.0	13.0	K 18X24X13	12900	14900	20.0	12 g
18.0	24.0	13.5	K 18X24X13.5	12900	14900	20.0	13 g
18.0	24.0	20.0	K 18X24X20	20000	26500	20.0	19 g
18.0	25.0	14.0	K 18X25X14	16500	18800	20.0	14 g
18.0	25.0	22.0	K 18X25X22	22900	28400	20.0	24 g
18.0	26.0	14.0	K 18X26X14	18000	20000	18.0	19 g
18.0	28.0	16.0	K 18X28X16	19000	18400	19.0	24 g
19.0	23.0	13.0	K 19X23X13	9300	13000	20.0	8 g
19.0	23.0	17.0	K 19X23X17	12000	18600	20.0	11 g
20.0	24.0	10.0	K 20X24X10	8700	12100	19.0	6 g
20.0	24.0	12.0	K 20X24X12	9600	13800	19.0	8 g
20.0	24.0	13.0	K 20X24X13	9600	13800	19.0	8 g
20.0	24.0	17.0	K 20X24X17	12400	20000	19.0	11 g
20.0	26.0	12.0	K 20X26X12	13100	15700	19.0	13 g
20.0	26.0	16.0	K 20X26X16	18000	25000	18.5	17 g
20.0	26.0	17.0	K 20X26X17	18700	25500	19.0	18 g
20.0	26.0	20.0	K 20X26X20	20600	28500	18.0	22 g
20.0	28.0	20.0	K 20X28X20	23400	28000	18.0	26 g
20.0	28.0	25.0	K 20X28X25	30000	28500	18.0	36 g
20.0	30.0	30.0	K 20X30X30	35000	41000	19.0	56 g
21.0	25.0	13.0	K 21X25X13	9600	14500	19.0	9 g
21.0	25.0	17.0	K 21X25X17	12800	21000	18.0	12 g
22.0	26.0	10.0	K 22X26X10	8700	12900	18.0	7 g
22.0	26.0	13.0	K 22X26X13	10000	15400	18.0	9 g
22.0	26.0	17.0	K 22X26X17	13100	22100	18.0	12 g
22.0	27.0	13.0	K 22X27X13	14000	23000	18.0	10 g
22.0	28.0	17.0	K 22X28X17	19000	26500	19.0	19 g
22.0	28.0	23.0	K 22X28X23	20000	27000	17.0	26 g
22.0	29.0	16.0	K 22X29X16	19500	25000	17.0	22 g

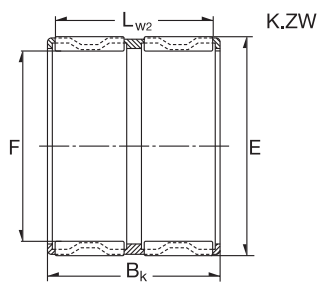
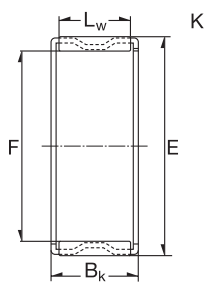
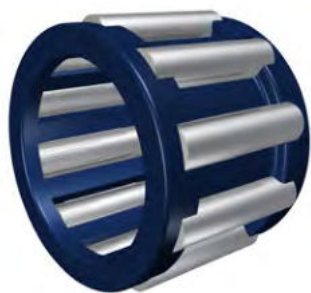
# K Nadelkränze / K Needle Roller Bearing



6

Dimension (mm)			Designation/Type	*Basic Load Rating		*LimitingSpeed x1000rpm Oil	Mass (g) approx.
F	E	BK		C, dyn. N	C, stat. N		
22.0	30.0	15.0	K 22X30X15 TN	19600	22900	18.9	14 g
22.0	30.0	20.0	K 22X30X20	21000	23500	18.9	28 g
23.0	32.0	24.0	K 22X32X24	33500	39500	16.0	43 g
24.0	35.0	16.0	K 23X35X16 TN	24000	23400	15.0	30 g
24.0	28.0	10.0	K 24X28X10	9400	14300	17.0	8 g
24.0	28.0	13.0	K 24X28X13	10500	17000	17.0	10 g
24.0	28.0	17.0	K 24X28X17	14000	24500	17.0	13 g
24.0	29.0	13.0	K 24X29X13	13100	19100	16.0	13 g
24.0	30.0	17.0	K 24X30X17	19000	27000	16.0	21 g
24.0	30.0	31.0	K 24X30X31	27000	43000	16.0	39 g
25.0	29.0	10.0	K 25X29X10	9700	14900	16.0	8 g
25.0	29.0	13.0	K 25X29X13	10800	17900	16.0	10 g
25.0	29.0	17.0	K 25X29X17	14500	25500	16.0	13 g
25.0	30.0	13.0	K 25X30X13	14100	21300	16.0	12 g
25.0	30.0	20.0	K 25X30X20	21100	28000	16.0	20 g
25.0	30.0	25.0	K 25X30X25	21700	40400	15.0	21 g
25.0	30.0	26.0	K 25X30X26	20100	26500	15.0	21 g
25.0	31.0	17.0	K 25X31X17	19000	28000	16.0	21 g
25.0	31.0	21.0	K 25X31X21	24100	37500	16.0	26 g
25.0	32.0	16.0	K 25X32X16	20500	27500	15.0	24 g
25.0	33.0	20.0	K 25X33X20	28000	37500	15.0	32 g
25.0	33.0	24.0	K 25X33X24	33900	46500	15.0	38 g
25.0	34.0	18.0	K 25X34X18	48000	67000	15.0	32 g
25.0	35.0	30.0	K 25X35X30	46500	61500	14.0	65 g
25.0	30.0	26.0	K 25X30X26	21000	35000	14.0	27 g
26.0	30.0	10.0	K 26X30X10	9500	15500	16.0	9 g
26.0	30.0	13.0	K 26X30X13	11100	18700	16.0	11 g
26.0	30.0	17.0	K 26X30X17	14700	27000	16.0	15 g
26.0	31.0	13.0	K 26X31X13	12400	18400	15.0	9 g
26.0	30.0	22.0	K 26X30X22	15200	28000	16.0	12 g
27.0	32.0	17.0	K 27X32X17	16000	34000	17.0	29 g

# K Nadelkränze / K Needle Roller Bearing

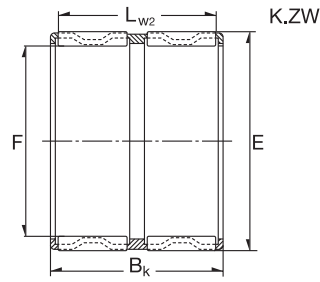
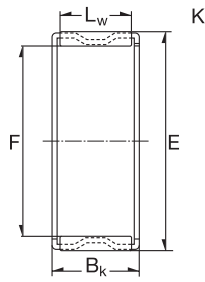


7

Dimension (mm)			Designation/Type	*Basic Load Rating		*LimitingSpeed x1000rpm Oil	Mass (g) approx.
F	E	BK		C, dyn. N	C, stat. N		
28.0	32.0	16.5	K 28X32X16.5	15000	32400	14.0	18 g
28.0	32.0	17.0	K 28X32X17	15000	32400	14.0	18 g
28.0	33.0	13.0	K 28X33X13	14800	23600	14.0	15 g
28.0	33.0	17.0	K 28X33X17	19100	33000	14.0	19 g
28.0	33.0	27.0	K 28X33X27 TN	22800	40500	14.0	19 g
28.0	34.0	17.0	K 28X34X17	21300	35000	14.0	24 g
28.0	35.0	16.0	K 28X35X16	21000	29000	14.0	29 g
28.0	35.0	18.0	K 28X35X18	23500	33500	14.0	31 g
28.0	35.0	20.0	K 28X35X20	24000	34000	14.0	35 g
28.0	35.0	27.0	K 28X35X27	34500	54500	14.0	47 g
28.0	36.0	16.0	K 28X36X16	34000	47000	11.0	40 g
28.0	40.0	18.0	K 28X40X18	33000	36500	12.0	50 g
28.0	40.0	25.0	K 28X40X25	45000	54500	12.0	71 g
30.0	34.0	13.0	K 30X34X13	11800	21200	13.0	14 g
30.0	35.0	13.0	K 30X35X13	11500	25000	13.0	16 g
30.0	35.0	17.0	K 30X35X17	19100	33500	13.0	21 g
30.0	35.0	27.0	K 30X35X27	30000	58500	13.0	33 g
30.0	37.0	16.0	K 30X37X16	22500	33000	13.0	26 g
30.0	38.0	25.0	K 30X38X25	16000	39000	13.0	43 g
30.0	40.0	18.0	K 30X40X18	31500	39500	12.0	44 g
30.0	40.0	30.0	K 30X40X30	48500	68500	13.0	78 g
30.0	35.0	26.0	K 30X35X26	23500	43500	12.0	32 g
32.0	37.0	13.0	K 32X37X13	15000	25000	12.0	18 g
32.0	37.0	17.0	K 32X37X17	19400	35000	12.0	22 g
32.0	37.0	27.0	K 32X37X27	29500	59500	12.0	36 g
32.0	37.0	28.0	K 32X37X28 TN	23100	43000	12.0	22 g
32.0	38.0	16.0	K 32X38X16	21000	34000	12.0	25 g
32.0	38.0	20.0	K 32X38X20	26000	44500	12.0	31 g
32.0	38.0	26.0	K 32X38X26 TN	27000	46500	12.0	25 g
32.0	39.0	16.0	K 32X39X16	23500	35000	12.0	36 g
32.0	39.0	18.0	K 32X39X18	26000	40500	12.0	37 g



# K Nadelkränze / K Needle Roller Bearing

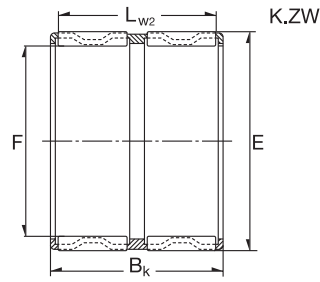
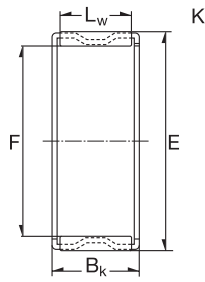


8

Dimension (mm)			Designation/Type	*Basic Load Rating		*LimitingSpeed x1000rpm Oil	Mass (g) approx.
F	E	BK		C, dyn. N	C, stat. N		
32.0	40.0	20.0	K 32X40X20	37000	40500	12.0	48 g
32.0	40.0	36.0	K 32X40X36	53500	91500	12.0	73 g
32.0	46.0	32.0	K 32X46X32	65500	82500	11.0	119 g
32.0	40.0	42.0	K 32X40X42 TN	49500	83500	12.0	77 g
35.0	40.0	13.0	K 35X40X13	15800	27500	11.0	18 g
35.0	40.0	17.0	K 35X40X17	20300	38000	11.0	25 g
35.0	40.0	25.0	K 35X40X25	29000	59500	11.0	31 g
35.0	40.0	27.0	K 35X40X27 TN	24500	48000	11.0	23 g
35.0	40.0	27.0	K 35X40X27	27800	62100	11.0	28 g
35.0	40.0	30.0	K 35X40X30	25000	49500	11.0	43 g
35.0	42.0	16.0	K 35X42X16	23900	37000	11.0	34 g
35.0	42.0	18.0	K 35X42X18	27000	42500	11.0	39 g
35.0	42.0	30.0	K 35X42X30	38500	67500	11.0	62 g
35.0	43.0	18.0	K 35X43X18	28000	41500	11.0	38 g
35.0	45.0	20.0	K 35X45X20	36500	49500	10.0	55 g
35.0	45.0	30.0	K 35X45X30	52500	78500	10.0	80 g
35.0	45.0	49.0	K 35X45X49	81500	13400	10.0	120 g
35.0	40.0	30.0	K 35X40X30	31500	65500	11.0	48 g
35.0	42.0	20.0	K 35X42X20	29500	48500	11.0	41 g
36.0	41.0	30.0	K 36X41X30	23000	43000	11.0	52 g
36.0	42.0	16.0	K 36X42X16	24000	42000	11.0	50 g
37.0	42.0	17.0	K 37X42X17	21900	42500	10.0	25 g
37.0	42.0	27.0	K 37X42X27	31500	67500	10.0	40 g
37.0	45.0	26.0	K 37X45X26	43500	73500	10.0	60 g
38.0	43.0	17.0	K 38X43X17	20000	38000	10.0	26 g
38.0	43.0	27.0	K 38X43X27	31000	67500	10.0	43 g
38.0	46.0	20.0	K 38X46X20	35000	56500	10.0	46 g
38.0	46.0	32.0	K 38X46X32	54500	98500	10.0	72 g
39.0	44.0	24.0	K 39X44X24	28000	58500	10.0	38 g
39.0	44.0	26.0	K 39X44X26	27000	55500	10.0	29 g
40.0	44.0	13.0	K 40X44X13	13500	28000	10.0	20 g



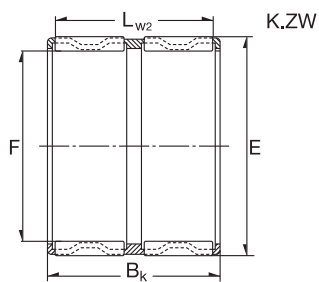
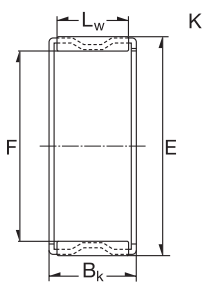
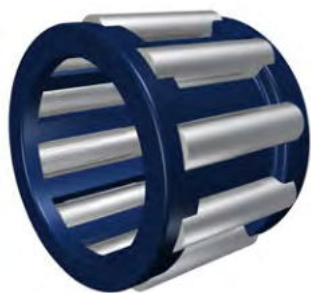
# K Nadelkränze / K Needle Roller Bearing



9

Dimension (mm)			Designation/Type	*Basic Load Rating		*LimitingSpeed x1000rpm Oil	Mass (g) approx.
F	E	BK		C, dyn. N	C, stat. N		
40.0	45.0	13.0	K 40X45X13	17100	32000	10.0	21 g
40.0	45.0	17.0	K 40X45X17	20900	41000	10.0	27 g
40.0	45.0	21.0	K 40X45X21	24400	49500	10.0	36 g
40.0	45.0	27.0	K 40X45X27	32500	72500	10.0	46 g
40.0	46.0	17.0	K 40X46X17	24500	44500	9.0	30 g
40.0	47.0	18.0	K 40X47X18	29000	49500	9.0	45 g
40.0	47.0	20.0	K 40X47X20	32000	56500	9.0	42 g
40.0	48.0	20.0	K 40X48X20	35500	58500	9.0	57 g
40.0	45.0	30.0	K 40X45X30	26000	53500	9.0	48 g
42.0	47.0	13.0	K 42X47X13	17300	33000	9.0	22 g
42.0	47.0	17.0	K 42X47X17	21100	42500	9.0	31 g
42.0	47.0	25.0	K 42X47X25 TN	27000	57500	9.0	25 g
42.0	47.0	27.0	K 42X47X27	33000	74500	9.0	46 g
42.0	48.0	35.0	K 42X48X35	35000	76000	9.0	60 g
42.0	50.0	18.0	K 42X50X18	31000	49500	9.0	53 g
42.0	50.0	20.0	K 42X50X20	34500	56500	9.0	54 g
42.0	47.0	30.0	K 42X47X30	31000	75500	9.0	54 g
43.0	48.0	17.0	K 43X48X17	21000	42500	9.0	29 g
43.0	48.0	27.0	K 43X48X27	33000	74500	9.0	45 g
43.0	50.0	18.0	K 43X50X18	30500	53500	9.0	48 g
45.0	49.0	19.0	K 45X49X19	17500	40000	8.0	27 g
45.0	50.0	17.0	K 45X50X17	22000	45000	8.0	25 g
45.0	50.0	27.0	K 45X50X27	34000	79500	8.0	50 g
45.0	50.0	32.0	K 45X50X32 TN	38000	90500	8.0	45 g
45.0	52.0	18.0	K 45X52X18	31000	56500	8.0	51 g
45.0	52.0	21.0	K 45X52X21 TN	39500	57500	8.0	32 g
45.0	53.0	20.0	K 45X53X20	38500	66500	8.0	62 g
45.0	53.0	21.0	K 45X53X21	38000	66500	8.0	65 g
45.0	53.0	22.0	K 45X53X22	42000	66500	8.0	68 g
45.0	53.0	28.0	K 45X53X28	51500	97500	8.0	78 g
45.0	59.0	18.0	K 45X59X18 TN	43500	53500	7.0	60 g

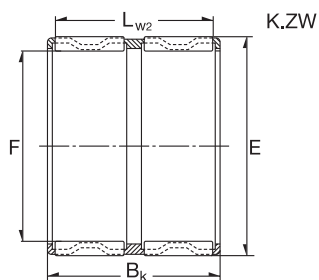
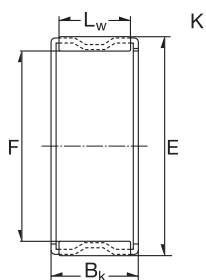
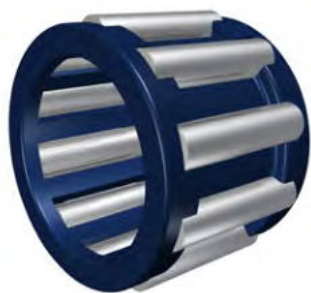
# K Nadelkränze / K Needle Roller Bearing



10

Dimension (mm)			Designation/Type	*Basic Load Rating		*LimitingSpeed x1000rpm Oil	Mass (g) approx.
F	E	BK		C, dyn. N	C, stat. N		
45.0	59.0	32.0	K 45X59X32	72500	101500	7.0	145 g
45.0	59.0	36.0	K 45X59X36	75500	108500	7.0	195 g
45.0	51.0	36.0	K 45X51X36	44500	98500	7.0	85 g
47.0	52.0	17.0	K 47X52X17	22800	48500	8.0	32 g
47.0	52.0	27.0	K 47X52X27	34500	82500	8.0	50 g
47.0	53.0	25.0	K 47X53X25	38000	81500	8.0	53 g
47.0	55.0	28.0	K 47X55X28	52500	99500	7.5	62 g
48.0	54.0	19.0	K 48X54X19	30000	60500	7.5	44 g
48.0	54.0	25.0	K 48X54X25	31000	91000	7.5	55 g
50.0	55.0	13.5	K 50X55X13.5	17500	36000	7.5	31 g
50.0	55.0	17.0	K 50X55X17	21400	46500	7.5	35 g
50.0	55.0	20.0	K 50X55X20	26000	59500	7.5	39 g
50.0	55.0	30.0	K 50X55X30	38500	96500	7.5	59 g
50.0	57.0	18.0	K 50X57X18	33000	62500	7.0	53 g
50.0	58.0	20.0	K 50X58X20	35000	61500	7.0	64 g
50.0	58.0	25.0	K 50X58X25	43500	80500	7.0	81 g
52.0	57.0	12.0	K 52X57X12	17500	36000	7.0	24 g
55.0	60.0	20.0	K 55X60X20	28000	65500	6.5	43 g
55.0	60.0	27.0	K 55X60X27	37500	96500	6.5	60 g
55.0	60.0	30.0	K 55X60X30	40500	10300	6.5	68 g
55.0	61.0	20.0	K 55X61X20	41000	11000	6.5	56 g
55.0	62.0	18.0	K 55X62X18	35000	68500	6.5	58 g
55.0	63.0	15.0	K 55X63X15	24500	40500	6.5	53 g
55.0	63.0	20.0	K 55X63X20	39500	79500	6.5	73 g
55.0	63.0	25.0	K 55X63X25	49500	99500	6.5	88 g
55.0	63.0	32.0	K 55X63X32	61500	129500	6.5	117 g
55.0	60.0	40.0	K 55X60X40	48000	132000	6.5	96 g
56.0	61.0	20.0	K 56X61X20	27000	64500	6.5	45 g
58.0	63.0	17.0	K 58X63X17	21500	63500	6.0	42 g
58.0	64.0	19.0	K 58X64X19	24500	77500	6.0	53 g
58.0	65.0	18.0	K 58X65X18	34500	69500	6.0	52 g

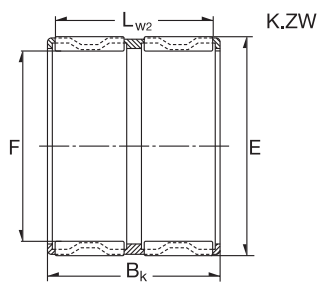
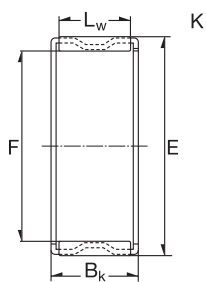
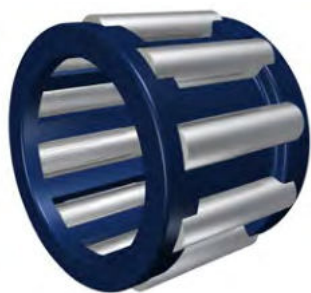
# K Nadelkränze / K Needle Roller Bearing



11

Dimension (mm)			Designation/Type	*Basic Load Rating		*LimitingSpeed x1000rpm Oil	Mass (g) approx.
F	E	BK		C, dyn. N	C, stat. N		
58.0	65.0	38.0	K 58X65X38	48500	106500	6.0	106 g
60.0	65.0	20.0	K 60X65X20	29000	71500	6.0	50 g
60.0	65.0	30.0	K 60X65X30	42000	115500	6.0	71 g
60.0	68.0	20.0	K 60X68X20	43000	84500	5.5	79 g
60.0	68.0	23.0	K 60X68X23	49000	100500	5.5	94 g
60.0	68.0	25.0	K 60X68X25	52500	110500	5.5	97 g
60.0	68.0	27.0	K 60X68X27	59000	120500	6.0	98 g
60.0	75.0	42.0	K 60X75X42	11300	19200	5.5	240 g
60.0	66.0	33.0	K 60X66X33	45500	111500	6.0	104 g
60.0	66.0	40.0	K 60X66X40	57500	150500	5.5	116 g
60.0	68.0	30.0	K 60X68X30	44000	87500	5.5	136 g
60.0	68.0	34.0	K 60X68X34	47500	95500	5.5	140 g
62.0	70.0	40.0	K 62X70X40	65500	145500	5.5	147 g
63.0	70.0	21.0	K 63X70X21	45000	100500	5.5	75 g
64.0	70.0	16.0	K 64X70X16	27500	59500	5.5	53 g
65.0	70.0	20.0	K 65X70X20	30000	76500	5.5	49 g
65.0	70.0	30.0	K 65X70X30	43500	123500	5.5	83 g
65.0	73.0	23.0	K 65X73X23	45500	93500	5.5	100 g
65.0	73.0	30.0	K 65X73X30	56500	122500	5.5	126 g
68.0	74.0	20.0	K 68X74X20	35000	83500	5.5	65 g
68.0	74.0	30.0	K 68X74X30	46000	117500	5.5	97 g
68.0	74.0	35.0	K 68X74X35	48000	124500	5.5	116 g
68.0	75.0	32.0	K 68X75X32	53500	127500	4.5	120 g
70.0	76.0	20.0	K 70X76X20	35500	85500	4.5	70 g
70.0	76.0	30.0	K 70X76X30	51500	138500	4.5	100 g
70.0	78.0	25.0	K 70X78X25	51500	111500	4.5	115 g
70.0	78.0	30.0	K 70X78X30	59500	134500	4.5	136 g
70.0	80.0	30.0	K 70X80X30	72500	147500	4.5	150 g
70.0	78.0	46.0	K 70X78X46	77500	18800	4.5	230 g
72.0	80.0	20.0	K 72X80X20	41000	84500	4.5	94 g
73.0	79.0	20.0	K 73X79X20	36500	99500	4.5	69 g

# K Nadelkränze / K Needle Roller Bearing



12

Dimension (mm)			Designation/Type	*Basic Load Rating		*LimitingSpeed x1000rpm Oil	Mass (g) approx.
F	E	BK		C, dyn. N	C, stat. N		
75.0	81.0	20.0	K 75X81X20	37000	93500	4.5	72 g
75.0	81.0	30.0	K 75X81X30	51500	142000	4.5	106 g
75.0	83.0	23.0	K 75X83X23	49500	108000	4.0	113 g
75.0	83.0	30.0	K 75X83X30	61500	142000	4.0	174 g
75.0	83.0	35.0	K 75X83X35	62500	146500	4.0	165 g
75.0	83.0	40.0	K 75X83X40	72500	176500	4.0	190 g
80.0	86.0	20.0	K 80X86X20	38000	97500	4.0	76 g
80.0	86.0	30.0	K 80X86X30	55500	158500	4.0	114 g
80.0	88.0	30.0	K 80X88X30	71500	178500	4.0	141 g
80.0	88.0	40.0	K 80X88X40	75500	191500	4.0	204 g
80.0	88.0	46.0	K 80X88X46	87500	23000	4.0	235 g
85.0	92.0	20.0	K 85X92X20	44000	107500	3.5	96 g
90.0	87.0	20.0	K 90X97X20	44500	112500	3.0	103 g
90.0	98.0	27.0	K 90X98X27	60500	149500	3.0	150 g
90.0	98.0	30.0	K 90X98X30	67500	171500	3.0	172 g
95.0	102.0	20.0	K 95X102X20	45500	122500	2.9	110 g
95.0	103.0	30.0	K 95X103X30	68500	179500	2.9	177 g
95.0	103.0	40.0	K 95X103X40	82500	227500	2.9	250 g
100.0	107.0	21.0	K 100X107X21	47500	126500	2.7	120 g
100.0	108.0	27.0	K 100X108X27	56500	142500	2.7	176 g
100.0	108.0	30.0	K 100X108X30	70500	187500	2.7	190 g
105.0	112.0	21.0	K 105X112X21	47000	126500	2.5	123 g
105.0	113.0	30.0	K 105X113X30	71500	196500	2.5	198 g
110.0	117.0	24.0	K 110X117X24	55500	157500	2.3	146 g
110.0	118.0	30.0	K 110X118X30	77500	218500	2.3	217 g

[www.zen.biz](http://www.zen.biz)

Alle Rechte vorbehalten, kein Teil des Katalogs darf in irgendeiner Form (Druck, Fotokopie, Mikrofilm oder in einem anderen Verfahren) ohne Genehmigung reproduziert oder unter Verwendung elektronischer Systeme verarbeitet, vervielfältigt oder verbreitet werden.

Copyright reserved. No part of the catalogue is to be copied, extracted or modified without explicit permission from the copyright holder.

v.10 / 18



Bearings for your future