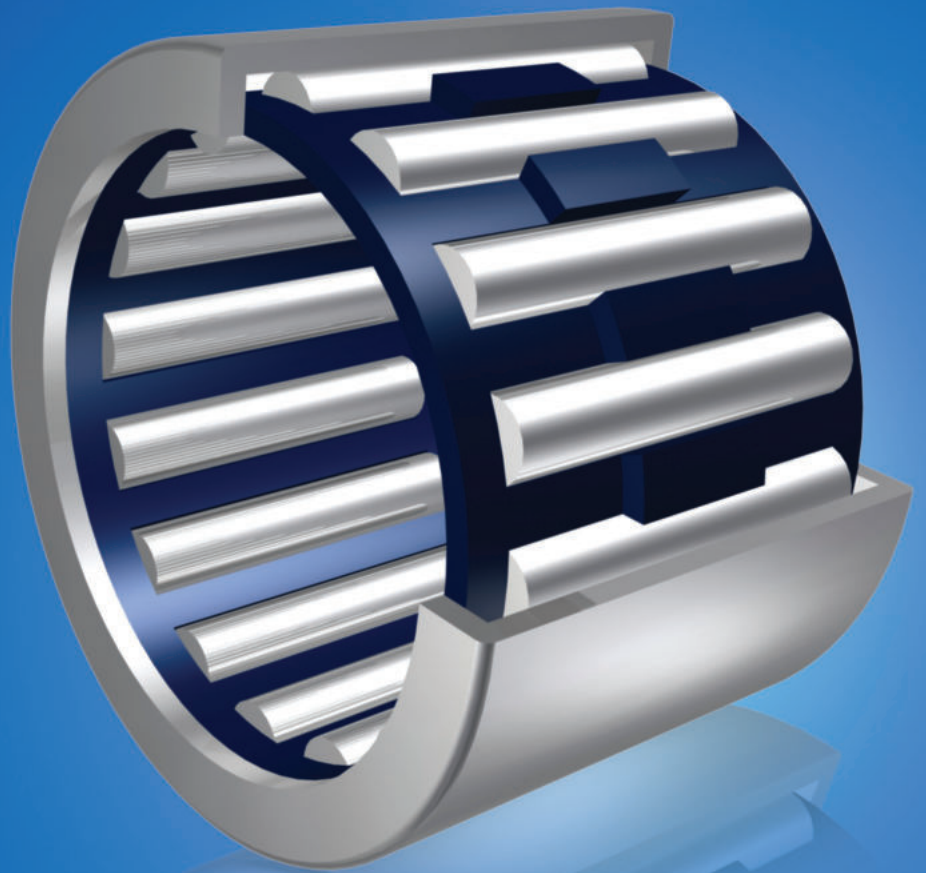


**ZON™**  
BEARINGS FOR YOUR FUTURE



Hülsenfreilauf / HF One-way Clutch Bearing





BEARINGS FOR YOUR FUTURE

**Zen Ball Bearings are manufactured to the highest quality for standard and non-standard applications. Our technical department can modify any non-standard bearings to your specific requirements, regardless of quantity.**

Apart from our extensive miniature ball bearing range of more than 1000 different types, ranging from 1-10 mm bore (Including inch dimensions), our range also includes Thin section, Three part thrust, Popular metric and any kind of non standard bearing. We are able to design bearings according to your requirements using new materials like ceramic or special steels for applications in Industry, Medicine, Chemistry and Food Processing.

Our technical department can modify any non-standard bearings to your specific requirements, even for small quantities.

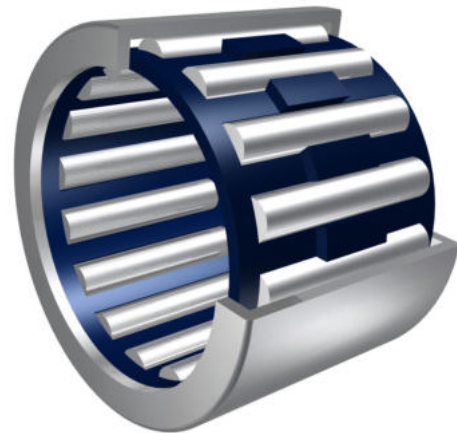
For any items not listed in our catalogue, please contact our experienced sales team.



Zen Ball Bearings Shanghai has been awarded the German ISO TUV Rheinland certification for inspection of ZEN products.

This certification is the highest standard a business in our industry can achieve. It is internationally recognised as a guarantee of quality, customer focus and continual improvement.

[www.zen.biz](http://www.zen.biz)



### Hülsenfreilauf HF One-way Clutch Bearing



Ölschmierung\*  
Oil lubrication\*



Fettschmierung\*  
Grease lubrication\*



Gummidichtscheiben verfügbar\*  
Rubber seal option available\*

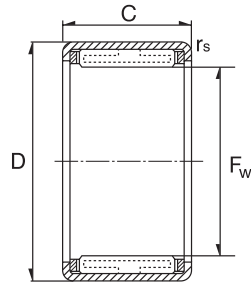
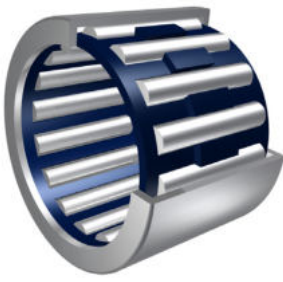


Geeignet für hohe Tragzahlen\*<sup>^</sup>  
Suitable for heavy load rating\*<sup>^</sup>



Einseitig gerichtete Umdrehung  
One way rotation

# Hülsenfreilauf / HF One-way Clutch Bearing



3

Dimension (mm)			Designation/Type		Permissible Torque Md / Nm	*Limiting Speed rpm		Suitable Drawn Cup Bearing	Mass (g) approx.
F <sub>w</sub>	D	C	Plastic Springs	Steel Springs		Rotating Shaft Min <sup>-1</sup>	Rotating Outer ring Min <sup>-1</sup>		
4.0	8.0	6.0	HF0406KF	--	0.34	34000	8000	HK0408TN	1 g
4.0	8.0	6.0	HF0406KFR	--	0.1	34000	8000	HD0408TN	1 g
6.0	10.0	12.0	HF0612KF	HF0612	1.76	23000	13000	HK0608	3 g
6.0	10.0	12.0	HF0612KFR	HF0612R	0.5	23000	13000	HK0608	3 g
8.0	12.0	12.0	HF0812KF	HF0812	3.15	17000	12000	HK0808	4 g
8.0	12.0	12.0	HF0812KFR	HF0812R	1	17000	12000	HK0808	4 g
10.0	14.0	12.0	HF1012KF	HF1012	5.3	14000	11000	HK1010	4 g
10.0	14.0	12.0	HF1012KFR	HF1012R	1.5	14000	11000	HK1010	4 g
12.0	18.0	16.0	--	HF1216	12.2	11000	8000	HK1212	11 g
14.0	20.0	16.0	--	HF1416	17.3	9500	8000	HK1412	13 g
16.0	22.0	16.0	--	HF1616	20.5	8500	7500	HK1612	14 g
18.0	24.0	16.0	--	HF1816	24.1	7500	7500	HK1812	16 g
20.0	26.0	16.0	--	HF2016	28.5	7000	6500	HK2010	17 g
25.0	32.0	20.0	--	HF2520	66	5500	5500	HK2512	30 g
30.0	37.0	20.0	--	HF3020	90	4500	4500	HK3012	36 g
35.0	42.0	20.0	--	HF3520	121	3900	3900	HK3512	40 g

\*Grenzdrehzahl gilt für Fett- und Ölschmierung  
 \*The limiting speeds are valid for both grease and oil lubrication.

HF..R mit Stahlfeder und Rändelung  
 HF..R with steel spring and knurling

HF..KF mit Kunststofffeder  
 HF..KF with plastic springs

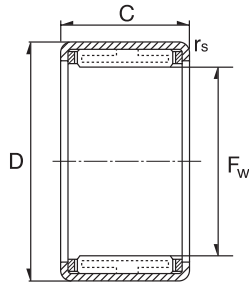
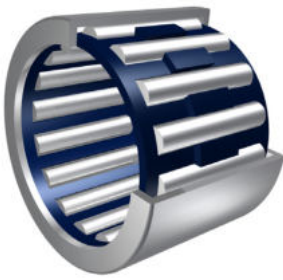
HF..KFR mit Kunststofffeder und Rändelung  
 HF..KFR with additional knurling

HFL..R mit Stahlfeder und Rändelung  
 HFL..R with steel spring and knurling

HFL..KF mit Kunststofffeder  
 HFL..KF with plastic springs

HFL..KFR mit Kunststofffeder und Rändelung  
 HFL..KFR with additional knurling

# Hülsenfreilauf / HF One-way Clutch Bearing



4

Dimension (mm)			Designation/Type		Permissible Torque Md / Nm	*Limiting Speed rpm		Basic Load Rating		Mass (g) approx.
F <sub>w</sub>	D	C	Plastic Springs	Steel Springs		Rotating Shaft Min <sup>-1</sup>	Rotating Outer ring Min <sup>-1</sup>	C	Co	
										KN
6.0	10.0	15.0	HFL0615KF	HFL0615	1.76	23000	13000	--	--	4 g
6.0	10.0	15.0	HFL0615KFR	HFL0615R	0.5	23000	13000	--	--	4 g
8.0	12.0	22.0	HFL0822KF	HFL0822	3.15	17000	12000	4.05	4.15	7 g
8.0	12.0	22.0	HFL0822KFR	HFL0822R	1	17000	12000	--	--	7 g
10.0	14.0	22.0	HFL1022KF	HFL1022	5.3	14000	11000	4.3	4.65	8 g
10.0	14.0	22.0	HFL1022KFR	HFL1022R	1.5	14000	11000	--	--	8 g
12.0	18.0	26.0	--	HFL1226	12.2	11000	8000	6.3	6.5	18 g
14.0	20.0	26.0	--	HFL1426	17.3	9500	8000	7.1	7.7	20 g
16.0	22.0	26.0	--	HFL1626	20.5	8500	7500	7.7	9	22 g
18.0	24.0	26.0	--	HFL1826	24.1	7500	7500	8.3	10.3	25 g
20.0	26.0	26.0	--	HFL2026	28.5	7000	6500	8.9	11.5	27 g
25.0	32.0	30.0	--	HFL2530	66	5500	5500	10.9	14.1	44 g
30.0	37.0	30.0	--	HFL3030	90	4500	4500	12.6	17.6	51 g
35.0	42.0	30.0	--	HFL3530	121	3900	3900	13	19.3	58 g

\*Grenzdrehzahl gilt für Fett- und Ölschmierung  
 \*The limiting speeds are valid for both grease and oil lubrication.

HF..R mit Stahlfeder und Rändelung  
[HF..R with steel spring and knurling](#)

HF..KF mit Kunststofffeder  
[HF..KF with plastic springs](#)

HF..KFR mit Kunststofffeder und Rändelung  
[HF..KFR with additional knurling](#)

HFL..R mit Stahlfeder und Rändelung  
[HFL..R with steel spring and knurling](#)

HFL..KF mit Kunststofffeder  
[HFL..KF with plastic springs](#)

HFL..KFR mit Kunststofffeder und Rändelung  
[HFL..KFR with additional knurling](#)

[www.zen.biz](http://www.zen.biz)

Alle Rechte vorbehalten, kein Teil des Katalogs darf in irgendeiner Form (Druck, Fotokopie, Mikrofilm oder in einem anderen Verfahren) ohne Genehmigung reproduziert oder unter Verwendung elektronischer Systeme verarbeitet, vervielfältigt oder verbreitet werden.

Copyright reserved. No part of the catalogue is to be copied, extracted or modified without explicit permission from the copyright holder.

v.10 / 18



Bearings for your future