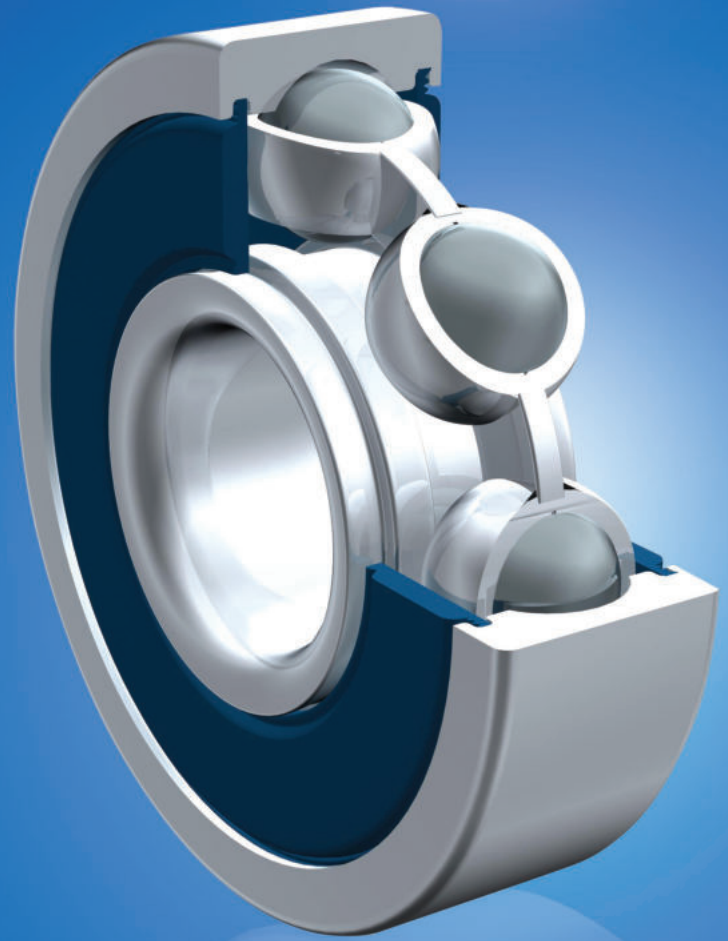


ZON™

BEARINGS FOR YOUR FUTURE



常用不锈钢公制轴承



TÜVRheinland®
CERT
Certified ISO 2008
Certified
Management System
according to ISO 9001:2008



BEARINGS FOR YOUR FUTURE

灿恩轴承品质卓越，在各种标准及非标应用中使用广泛。
无论数量多少，我们的技术部门都能够根据您的要求定制任何规格的非标轴承。

灿恩除了经营一千余种微型轴承（内径1-10mm,包括英制）之外还提供薄壁、推力、标准公制轴承以及其他各种非标轴承。我们能够按照客户的特殊需求，通过一些新型材料例如陶瓷或者特殊钢材来设计轴承以满足工业，医疗，化学或食品加工行业上的各种应用。

如果您在我们的产品目录册中无法找到您的理想型号，请联系我们经验丰富的销售团队。



灿恩已获得德国ISO 9001 TUV莱茵认证。

莱茵认证被视作轴承行业的最高检验标准，受到国际认可并得到广大客户的肯定，被视为品质和服务的保证。

www.zen.biz



常用不锈钢公制轴承



润滑油



润滑脂



户外耐久性



低温适用



耐化学溶剂

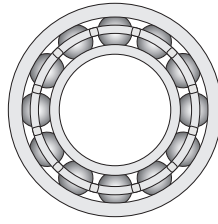
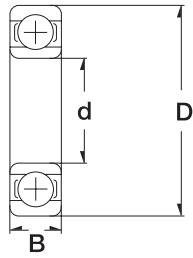


橡胶密封圈（可选）



金属防尘盖（可选）

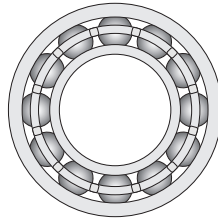
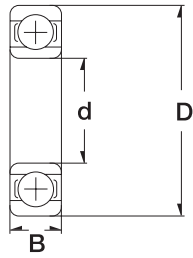
常用不锈钢公制轴承



3

| standard | | | flanged | | | Designation/Type | | | * Load Rating | | Weight (g) approx. |
|----------------|------|------|---------|-----------|------------|------------------|-------------------|------------|---------------|-------|--------------------|
| Dimension (mm) | | | | | | | | | | | |
| d | D | B | Open | 2Z | 2RS | 2TS | in C3 | C, dyn. N | C, stat. N | | |
| 10.0 | 26.0 | 8.0 | S6000 | S6000-2Z | S6000-2RS | S6000-2TS | avail. / lieferb. | 4620 | 1990 | 19 g | |
| 10.0 | 26.0 | 8.0 | SF6000 | SF6000-2Z | SF6000-2RS | - | - | 3234 | 1393 | 21 g | |
| 10.0 | 28.0 | 8.0 | S16100 | S16100-2Z | S16100-2RS | - | avail. / lieferb. | on request | auf Anfrage | 22 g | |
| 10.0 | 30.0 | 9.0 | S6200 | S6200-2Z | S6200-2RS | S6200-2TS | avail. / lieferb. | 5070 | 2360 | 32 g | |
| 10.0 | 30.0 | 9.0 | SF6200 | SF6200-2Z | SF6200-2RS | - | - | 5070 | 2360 | 35 g | |
| 10.0 | 30.0 | 14.0 | - | - | S62200-2RS | - | avail. / lieferb. | on request | auf Anfrage | 40 g | |
| 10.0 | 35.0 | 11.0 | S6300 | S6300-2Z | S6300-2RS | - | avail. / lieferb. | 8060 | 3400 | 53 g | |
| 10.0 | 35.0 | 17.0 | - | - | S62300-2RS | - | avail. / lieferb. | on request | auf Anfrage | 60 g | |
| 12.0 | 28.0 | 8.0 | S6001 | S6001-2Z | S6001-2RS | S6001-2TS | avail. / lieferb. | 5070 | 2360 | 22 g | |
| 12.0 | 28.0 | 8.0 | SF6001 | SF6001-2Z | SF6001-2RS | - | - | 5070 | 2360 | 24 g | |
| 12.0 | 30.0 | 8.0 | S16001 | S16001-2Z | S16001-2RS | - | avail. / lieferb. | on request | auf Anfrage | 22 g | |
| 12.0 | 32.0 | 10.0 | S6201 | S6201-2Z | S6201-2RS | S6201-2TS | avail. / lieferb. | 6870 | 3100 | 37 g | |
| 12.0 | 32.0 | 10.0 | SF6201 | SF6201-2Z | SF6201-2RS | - | - | 6870 | 3100 | 41 g | |
| 12.0 | 32.0 | 14.0 | - | - | S62201-2RS | - | avail. / lieferb. | on request | auf Anfrage | 45 g | |
| 12.0 | 37.0 | 12.0 | S6301 | S6301-2Z | S6301-2RS | - | avail. / lieferb. | 9750 | 4150 | 60 g | |
| 12.0 | 37.0 | 17.0 | - | - | S62301-2RS | - | avail. / lieferb. | on request | auf Anfrage | 70 g | |
| 15.0 | 32.0 | 8.0 | S16002 | S16002-2Z | S16002-2RS | - | avail. / lieferb. | on request | auf Anfrage | 25 g | |
| 15.0 | 32.0 | 9.0 | S6002 | S6002-2Z | S6002-2RS | S6002-2TS | avail. / lieferb. | 5590 | 2850 | 30 g | |
| 15.0 | 32.0 | 9.0 | SF6002 | SF6002-2Z | SF6002-2RS | - | - | 5590 | 2850 | 33 g | |
| 15.0 | 35.0 | 11.0 | S6202 | S6202-2Z | S6202-2RS | S6202-2TS | avail. / lieferb. | 7800 | 3100 | 45 g | |
| 15.0 | 35.0 | 11.0 | SF6202 | SF6202-2Z | SF6202-2RS | - | - | 7800 | 3100 | 50 g | |
| 15.0 | 35.0 | 14.0 | - | - | S62202-2RS | - | avail. / lieferb. | on request | auf Anfrage | 54 g | |
| 15.0 | 42.0 | 13.0 | S6302 | S6302-2Z | S6302-2RS | - | avail. / lieferb. | 11400 | 5400 | 82 g | |
| 15.0 | 42.0 | 17.0 | - | - | S62302-2RS | - | avail. / lieferb. | on request | auf Anfrage | 110 g | |
| 17.0 | 35.0 | 8.0 | S16003 | S16003-2Z | S16003-2RS | - | avail. / lieferb. | on request | auf Anfrage | 32 g | |
| 17.0 | 35.0 | 10.0 | S6003 | S6003-2Z | S6003-2RS | S6003-2TS | avail. / lieferb. | 6050 | 3250 | 39 g | |
| 17.0 | 40.0 | 12.0 | S6203 | S6203-2Z | S6203-2RS | S6203-2TS | avail. / lieferb. | 9650 | 4750 | 65 g | |

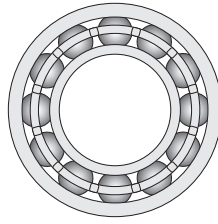
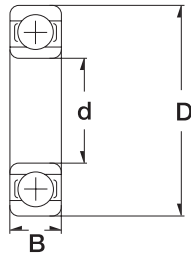
常用不锈钢公制轴承



4

| standard | | flanged | Designation/Type | | | | | * Load Rating | | Weight (g) approx. | | |
|----------------|------|---------|------------------|-----------|------------|-----------|-------------------|---------------|-------------|--------------------|--|--|
| Dimension (mm) | | | | | | | | | | | | |
| d | D | B | Open | 2Z | 2RS | 2TS | in C3 | C, dyn. N | C, stat. N | | | |
| 17.0 | 40.0 | 16.0 | - | - | S62203-2RS | - | avail. / lieferb. | on request | auf Anfrage | 83 g | | |
| 17.0 | 47.0 | 14.0 | S6303 | S6303-2Z | S6303-2RS | - | avail. / lieferb. | 13500 | 6550 | 120 g | | |
| 17.0 | 47.0 | 19.0 | - | - | S62303-2RS | - | avail. / lieferb. | on request | auf Anfrage | 150 g | | |
| 20.0 | 42.0 | 8.0 | S16004 | S16004-2Z | S16004-2RS | - | avail. / lieferb. | on request | auf Anfrage | 50 g | | |
| 20.0 | 42.0 | 12.0 | S6004 | S6004-2Z | S6004-2RS | S6004-2TS | avail. / lieferb. | 9360 | 5000 | 69 g | | |
| 20.0 | 47.0 | 14.0 | S6204 | S6204-2Z | S6204-2RS | S6204-2TS | avail. / lieferb. | 12700 | 6550 | 110 g | | |
| 20.0 | 47.0 | 18.0 | - | - | S62204-2RS | - | avail. / lieferb. | on request | auf Anfrage | 130 g | | |
| 20.0 | 52.0 | 15.0 | S6304 | S6304-2Z | S6304-2RS | - | avail. / lieferb. | 15900 | 7800 | 140 g | | |
| 20.0 | 52.0 | 21.0 | - | - | S62304-2RS | - | avail. / lieferb. | on request | auf Anfrage | 200 g | | |
| 25.0 | 47.0 | 8.0 | S16005 | S16005-2Z | S16005-2RS | - | avail. / lieferb. | on request | auf Anfrage | 60 g | | |
| 25.0 | 47.0 | 12.0 | S6005 | S6005-2Z | S6005-2RS | - | avail. / lieferb. | 11200 | 6550 | 80 g | | |
| 25.0 | 52.0 | 15.0 | S6205 | S6205-2Z | S6205-2RS | - | avail. / lieferb. | 14000 | 7800 | 130 g | | |
| 25.0 | 52.0 | 18.0 | - | - | S62205-2RS | - | avail. / lieferb. | on request | auf Anfrage | 150 g | | |
| 25.0 | 62.0 | 17.0 | S6305 | S6305-2Z | S6305-2RS | - | avail. / lieferb. | 22500 | 11600 | 230 g | | |
| 25.0 | 62.0 | 24.0 | - | - | S62305-2RS | - | avail. / lieferb. | on request | auf Anfrage | 320 g | | |
| 30.0 | 55.0 | 13.0 | S6006 | S6006-2Z | S6006-2RS | - | avail. / lieferb. | 13300 | 8300 | 120 g | | |
| 30.0 | 62.0 | 16.0 | S6206 | S6206-2Z | S6206-2RS | - | avail. / lieferb. | 19500 | 11200 | 200 g | | |
| 30.0 | 72.0 | 19.0 | S6306 | S6306-2Z | S6306-2RS | - | avail. / lieferb. | 28100 | 16000 | 350 g | | |
| 35.0 | 62.0 | 14.0 | S6007 | S6007-2Z | S6007-2RS | - | avail. / lieferb. | 15900 | 10200 | 160 g | | |
| 35.0 | 72.0 | 17.0 | S6207 | S6207-2Z | S6207-2RS | - | avail. / lieferb. | 25500 | 15300 | 290 g | | |
| 35.0 | 80.0 | 21.0 | S6307 | S6307-2Z | S6307-2RS | - | avail. / lieferb. | on request | auf Anfrage | 450 g | | |
| 40.0 | 68.0 | 15.0 | S6008 | S6008-2Z | S6008-2RS | - | avail. / lieferb. | 16800 | 11600 | 190 g | | |
| 40.0 | 80.0 | 18.0 | S6208 | S6208-2Z | S6208-2RS | - | avail. / lieferb. | 30700 | 19000 | 370 g | | |
| 40.0 | 90.0 | 23.0 | S6308 | S6308-2Z | S6308-2RS | - | avail. / lieferb. | 33200 | 19000 | 460 g | | |

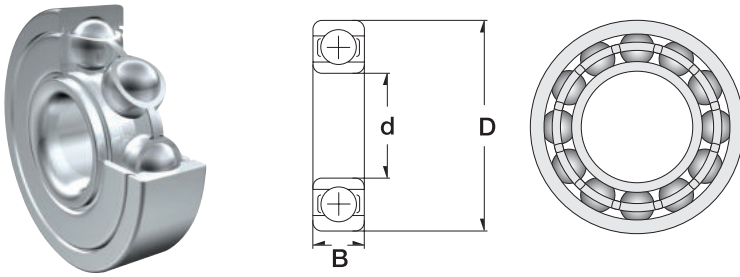
常用不锈钢公制轴承



5

| standard | | flanged | Designation/Type | | | | | * Load Rating | | Weight (g) approx. |
|----------------|-------|---------|------------------|----------|-----------|-----|-------------------|---------------|-------------|--------------------|
| Dimension (mm) | | | | | | | | | | |
| d | D | B | Open | 2Z | 2RS | 2TS | in C3 | C, dyn. N | C, stat. N | |
| 45.0 | 75.0 | 16.0 | S6009 | S6009-2Z | S6009-2RS | - | avail. / lieferb. | 20860 | 14600 | 250 g |
| 45.0 | 85.0 | 19.0 | S6209 | S6209-2Z | S6209-2RS | - | avail. / lieferb. | 33200 | 21600 | 410 g |
| 50.0 | 80.0 | 16.0 | S6010 | S6010-2Z | S6010-2RS | - | avail. / lieferb. | 21600 | 16000 | 260 g |
| 50.0 | 90.0 | 20.0 | S6210 | S6210-2Z | S6210-2RS | - | avail. / lieferb. | 35100 | 23200 | 460 g |
| 50.0 | 110.0 | 27.0 | S6310 | S6310-2Z | S6310-2RS | - | avail. / lieferb. | on request | auf Anfrage | 1060 g |
| 55.0 | 90.0 | 18.0 | S6011 | - | S6011-2RS | - | avail. / lieferb. | 28100 | 21100 | 390 g |
| 55.0 | 100.0 | 21.0 | S6211 | - | S6211-2RS | - | avail. / lieferb. | 43600 | 29000 | 610 g |
| 55.0 | 120.0 | 29.0 | S6311 | | S6311-2RS | - | avail. / lieferb. | on request | auf Anfrage | 1350 g |
| 60.0 | 95.0 | 18.0 | S6012 | - | S6012-2RS | - | avail. / lieferb. | 29600 | 23200 | 420 g |
| 60.0 | 110.0 | 22.0 | S6212 | - | S6212-2RS | - | avail. / lieferb. | 47500 | 32500 | 780 g |
| 60.0 | 130.0 | 31.0 | S6312 | | S6312-2RS | - | avail. / lieferb. | on request | auf Anfrage | 1690 g |
| 65.0 | 100.0 | 18.0 | S6013 | - | S6013-2RS | - | avail. / lieferb. | 30700 | 25000 | 440 g |
| 65.0 | 120.0 | 23.0 | S6213 | - | S6213-2RS | - | avail. / lieferb. | 55900 | 40500 | 990 g |
| 65.0 | 140.0 | 33.0 | S6313 | | S6313-2RS | - | avail. / lieferb. | on request | auf Anfrage | 2070 g |
| 70.0 | 110.0 | 20.0 | S6014 | - | S6014-2RS | - | avail. / lieferb. | 29680 | 24200 | 580 g |
| 70.0 | 125.0 | 24.0 | S6214 | - | S6214-2RS | - | avail. / lieferb. | 46790 | 37590 | 1080 g |
| 70.0 | 150.0 | 35.0 | S6314 | | S6314-2RS | - | avail. / lieferb. | on request | auf Anfrage | 2490 g |
| 75.0 | 115.0 | 20.0 | S6015 | - | S6015-2RS | - | avail. / lieferb. | 30910 | 26600 | 610 g |
| 75.0 | 130.0 | 25.0 | S6215 | - | S6215-2RS | - | avail. / lieferb. | 50850 | 41260 | 1180 g |
| 75.0 | 160.0 | 37.0 | S6315 | | S6315-2RS | - | avail. / lieferb. | on request | auf Anfrage | 2980 g |
| 80.0 | 125.0 | 22.0 | S6016 | - | S6016-2RS | - | avail. / lieferb. | on request | auf Anfrage | 850 g |
| 80.0 | 140.0 | 26.0 | S6216 | - | S6216-2RS | - | avail. / lieferb. | on request | auf Anfrage | 1400 g |
| 80.0 | 170.0 | 39.0 | S6316 | | S6316-2RS | - | avail. / lieferb. | on request | auf Anfrage | 3580 g |
| 90.0 | 140.0 | 24.0 | S6018 | - | S6018-2RS | - | avail. / lieferb. | on request | auf Anfrage | 1150 g |

常用不锈钢公制轴承



6

| standard | | flanged | Designation/Type | | | | | * Load Rating | | Weight (g) approx. | |
|----------------|-------|---------|------------------|----|-----------|-----|-------------------|---------------|-------------|--------------------|--|
| Dimension (mm) | | | | | | | | | | | |
| d | D | B | Open | 2Z | 2RS | 2TS | in C3 | C, dyn. N | C, stat. N | | |
| 90.0 | 160.0 | 30.0 | S6218 | - | S6218-2RS | - | avail. / lieferb. | on request | auf Anfrage | 2150 g | |
| 100.0 | 150.0 | 24.0 | S6020 | - | S6020-2RS | - | avail. / lieferb. | on request | auf Anfrage | 1250 g | |
| 100.0 | 180.0 | 34.0 | S6220 | - | S6220-2RS | - | avail. / lieferb. | on request | auf Anfrage | 3150 g | |
| 110.0 | 170.0 | 28.0 | S6022 | - | S6022-2RS | - | avail. / lieferb. | on request | auf Anfrage | 1950 g | |
| 110.0 | 200.0 | 38.00 | S6222 | - | S6700-2RS | - | avail. / lieferb. | on request | auf Anfrage | 4290 g | |
| 120.0 | 180.0 | 28.0 | S6024 | - | S6024-2RS | - | avail. / lieferb. | on request | auf Anfrage | 2880 g | |
| 120.0 | 215.0 | 40.00 | S6224 | - | S6224-2RS | - | avail. / lieferb. | on request | auf Anfrage | 5500 g | |
| 130.0 | 200.0 | 33.00 | S6026 | - | S6026-2RS | - | avail. / lieferb. | on request | auf Anfrage | 4550 g | |
| 130.0 | 230.0 | 40.00 | S6226 | - | S6226-2RS | - | avail. / lieferb. | on request | auf Anfrage | 6340 g | |
| 140.0 | 210.0 | 33.00 | S6028 | - | S6028-2RS | - | avail. / lieferb. | on request | auf Anfrage | 4630 g | |
| 140.0 | 250.0 | 42.00 | S6228 | - | S6228-2RS | - | avail. / lieferb. | on request | auf Anfrage | 7700 g | |
| 150.0 | 225.0 | 35.00 | S6030 | - | S6030-2RS | - | avail. / lieferb. | on request | auf Anfrage | 4290 g | |
| 150.0 | 270.0 | 45.00 | S6230 | - | S6230-2RS | - | avail. / lieferb. | on request | auf Anfrage | 10250 g | |

www.zen.biz

版权所有。
未经版权所有人明确许可，不得擅自复制、摘录、更改该目录册的任何部分。

v.10 / 18



Bearings for your future