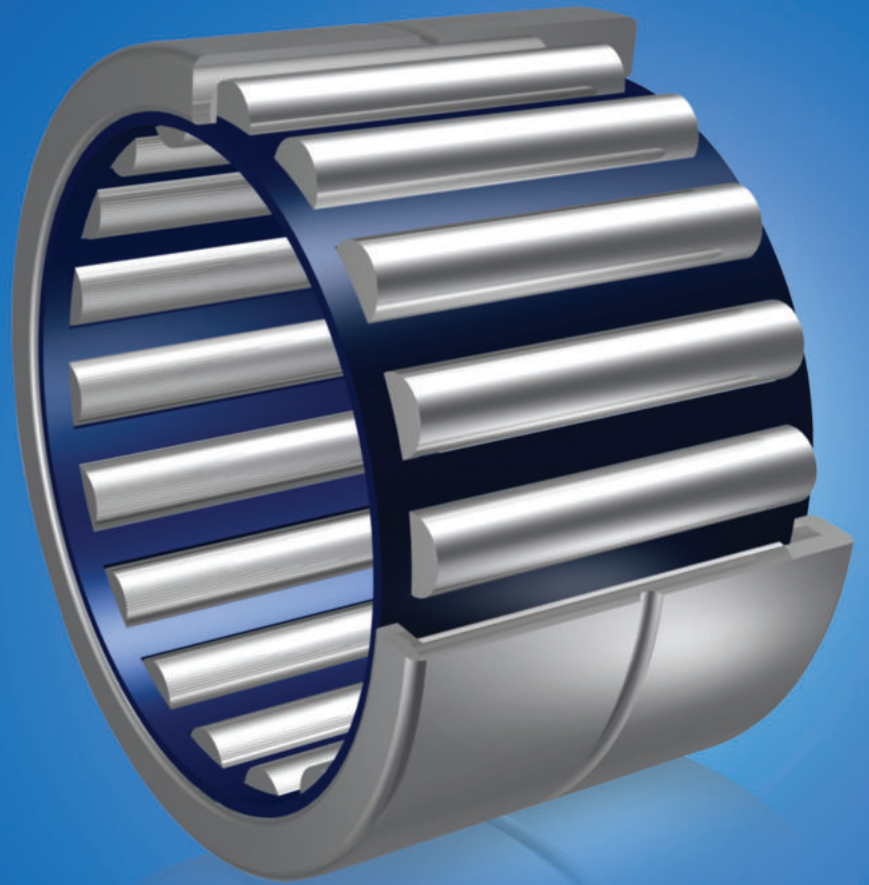


ZON™

BEARINGS FOR YOUR FUTURE



NK滚针轴承





BEARINGS FOR YOUR FUTURE

灿恩轴承品质卓越，在各种标准及非标应用中使用广泛。
无论数量多少，我们的技术部门都能够根据您的要求定制任何规格的非标轴承。

灿恩除了经营一千余种微型轴承（内径1-10mm,包括英制）之外还提供薄壁、推力、标准公制轴承以及其他各种非标轴承。我们能够按照客户的特殊需求，通过一些新型材料例如陶瓷或者特殊钢材来设计轴承以满足工业，医疗，化学或食品加工行业上的各种应用。

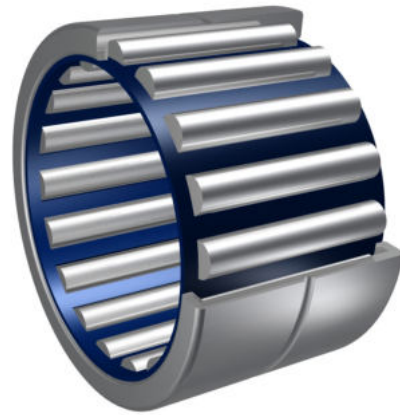
如果您在我们的产品目录册中无法找到您的理想型号，请联系我们经验丰富的销售团队。



灿恩已获得德国ISO 9001 TUV莱茵认证。

莱茵认证被视作轴承行业的最高检验标准，受到国际认可并得到广大客户的肯定，被视为品质和服务的保证。

www.zen.biz



NK滚针轴承



润滑油



润滑脂



高速运转适用

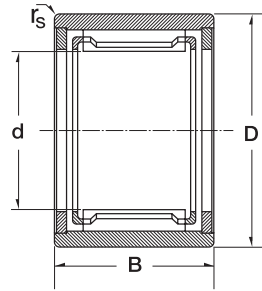
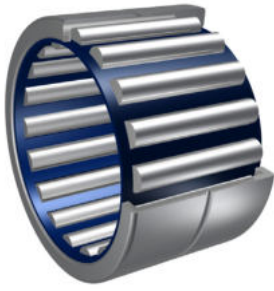


超负荷适用



橡胶密封圈（可选）

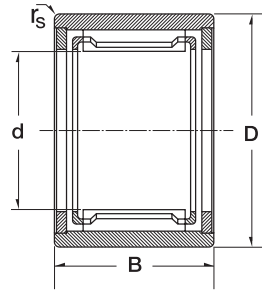
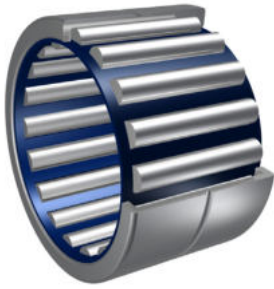
NK滚针轴承



3

Dimension (mm)				Designation/Type GD	*Basic Load Rating		*Limiting Speed x1000rpm		Mass (g) approx.
d	D	B	r _s		C, dyn. N	C, stat. N	Grease	Oil	
5.0	10.0	10.0	0.15	NK 5/10 B TN	2385	1728	24	39	3 g
5.0	10.0	12.0	0.15	NK 5/12 TN	3060	2385	24	39	4 g
6.0	12.0	10.0	0.15	NK 6/10	2655	2052	22	36	5 g
6.0	12.0	12.0	0.15	NK 6/12 TN	3420	2835	22	36	6 g
7.0	14.0	10.0	0.3	NK 7/10 TN	3060	2385	20	34	7 g
7.0	14.0	12.0	0.3	NK 7/12 TN	3690	3150	20	34	8 g
8.0	15.0	12.0	0.3	NK 8/12	4005	3690	19	32	8 g
8.0	15.0	16.0	0.3	NK 8/16	5220	5220	19	32	12 g
9.0	16.0	12.0	0.3	NK 9/12	4590	4500	18	30	10 g
9.0	16.0	16.0	0.3	NK 9/16	5940	6390	18	30	13 g
10.0	17.0	12.0	0.3	NK 10/12	4770	4950	17	28	10 g
10.0	17.0	16.0	0.3	NK 10/16	6300	7020	17	28	13 g
12.0	19.0	12.0	0.3	NK 12/12	6480	6390	16	26	12 g
12.0	19.0	16.0	0.3	NK 12/16	9090	9900	16	26	16 g
14.0	22.0	13.0	0.3	RNA 4900	8640	8280	15	25	16 g
14.0	22.0	16.0	0.3	NK 14/16	10260	10350	15	25	21 g
14.0	22.0	20.0	0.3	NK 14/20	13050	14040	15	25	25 g
14.0	22.0	13.0	0.3	RNA 4900-2RS	6930	6210	15	25	16 g
15.0	23.0	16.0	0.3	NK 15/16	10890	11430	14.4	24	21 g
15.0	23.0	20.0	0.3	NK 15/20	13860	15480	14.4	24	27 g
15.0	23.0	12.0	0.3	NK 15/12	10890	11430	21	-	19 g
16.0	24.0	13.0	0.3	RNA 4901	9540	9810	14	23	17 g
16.0	24.0	16.0	0.3	NK 16/16	11520	12510	14	23	22 g
16.0	24.0	20.0	0.3	NK 16/20	14670	16920	14	23	28 g
16.0	24.0	22.0	0.3	RNA 6901	16290	19440	14	23	31 g
16.0	24.0	13.0	0.3	RNA 4901-2RS	7740	7470	14	23	17 g
16.0	24.0	22.0	0.3	RNA 6901-2RS	14490	20880	14	23	31 g
17.0	25.0	16.0	0.3	NK 17/16	12150	13500	14	23	24 g
17.0	25.0	20.0	0.3	NK 17/20	15390	18360	14	23	30 g
18.0	26.0	16.0	0.3	NK 18/16	12690	14580	14	22	25 g

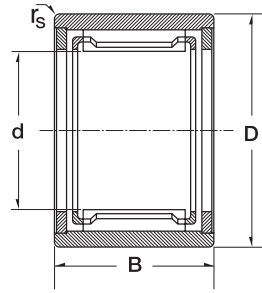
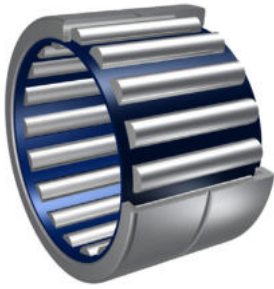
NK滚针轴承



4

Dimension (mm)				Designation/Type GD	*Basic Load Rating		*Limiting Speed x1000rpm		Mass (g) approx.
d	D	B	r _s		C, dyn. N	C, stat. N	Grease	Oil	
18.0	26.0	20.0	0.3	NK 18/20	16110	19800	14	22	31 g
19.0	27.0	16.0	0.3	NK 19/16	13230	15660	14	22	26 g
19.0	27.0	20.0	0.3	NK 19/20	16830	21240	14	22	32 g
20.0	28.0	13.0	0.3	RNA 4902	10800	12240	13	20	22 g
20.0	28.0	16.0	0.3	NK 20/16	13140	15750	13	20	27 g
20.0	28.0	20.0	0.3	NK 20/20	16740	21420	13	20	34 g
20.0	28.0	23.0	0.3	RNA 6902	17550	22950	13	20	40 g
20.0	32.0	20.0	0.6	NKS 20	23400	22500	13	20	49 g
20.0	28.0	13.0	0.3	RNA 4902-2RS	8730	9270	13	20	22 g
20.0	28.0	23.0	0.3	RNA 6902-2RS	17550	22950	13	20	40 g
21.0	29.0	16.0	0.3	NK 21/16	13680	16830	13	20	28 g
21.0	29.0	20.0	0.3	NK 21/20	17370	22950	13	20	35 g
22.0	30.0	13.0	0.3	RNA 4903	11160	13140	12	19	22 g
22.0	30.0	16.0	0.3	NK 22/16	14220	17910	12	19	30 g
22.0	30.0	20.0	0.3	NK 22/20	18000	24300	12	19	37 g
22.0	30.0	23.0	0.3	RNA 6903	18990	26100	12	19	42 g
22.0	35.0	20.0	0.6	NKS 22	24750	25200	12	19	61 g
22.0	30.0	13.0	0.3	RNA 4903-2RS	9000	9900	12	19	22 g
22.0	30.0	23.0	0.3	RNA 6903-2RS	18990	26100	12	19	42 g
24.0	32.0	16.0	0.3	NK 24/16	15210	20070	10	17	32 g
24.0	32.0	20.0	0.3	NK 24/20	19260	27450	10	17	40 g
24.0	37.0	20.0	0.6	NKS 24	26550	27900	10	17	65 g
25.0	33.0	16.0	0.3	NK 25/16	15120	20160	10	17	33 g
25.0	33.0	20.0	0.3	NK 25/20	19170	27450	10	17	42 g
25.0	37.0	17.0	0.3	RNA 4904	21330	22950	10	17	52 g
25.0	37.0	30.0	0.3	RNA 6904	36450	45900	10	17	100 g
25.0	38.0	20.0	0.6	NKS 25	27900	30150	10	17	68 g
25.0	37.0	17.0	0.3	RNA 4904-2RS	17550	17910	10	17	52 g
25.0	37.0	30.0	0.3	RNA 6904-2RS	36450	45900	10	17	100 g
26.0	34.0	16.0	0.3	NK 26/16	15570	21240	9.5	16	34 g

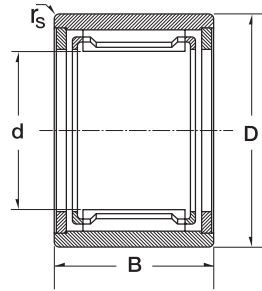
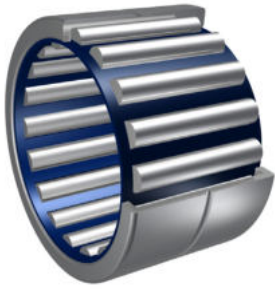
NK滚针轴承



5

Dimension (mm)				Designation/Type GD	*Basic Load Rating		*Limiting Speed x1000rpm		Mass (g) approx.
d	D	B	r _s		C, dyn. N	C, stat. N	Grease	Oil	
26.0	34.0	20.0	0.3	NK 26/20	19800	28800	9.5	16	42 g
28.0	37.0	20.0	0.3	NK 28/20	22320	30600	9	15	52 g
28.0	37.0	30.0	0.3	NK 28/30	33300	51300	9	15	82 g
28.0	39.0	17.0	0.3	RNA 49/22	23400	26550	9	15	50 g
28.0	39.0	30.0	0.3	RNA 69/22	37800	49500	9	15	98 g
28.0	42.0	20.0	0.3	NKS 28	29250	32850	9	15	84 g
28.0	39.0	17.0	0.3	RNA 49/22-2RS	20970	28800	9	15	50 g
28.0	39.0	30.0	0.3	RNA 69/22-2RS	33210	51300	9	15	98 g
29.0	38.0	20.0	0.3	NK 29/20	24750	35100	8.5	14	54 g
29.0	38.0	30.0	0.3	NK 29/30	33300	51300	8.5	14	84 g
30.0	40.0	20.0	0.3	NK 30/20	25200	36900	8.5	14	65 g
30.0	40.0	30.0	0.3	NK 30/30	37800	62100	8.5	14	98 g
30.0	42.0	17.0	0.3	RNA 4905	23850	28350	8.5	14	61 g
30.0	42.0	30.0	0.3	RNA 6905	39600	53100	8.5	14	112 g
30.0	45.0	22.0	0.6	NKS 30	32850	36000	8.5	14	104 g
30.0	42.0	17.0	0.3	RNA 4905-2RS	19620	21780	8.5	14	61 g
30.0	42.0	30.0	0.3	RNA 6905-2RS	39600	53100	8.5	14	112 g
32.0	42.0	20.0	0.3	NK 32/20	26550	40050	8	13	68 g
32.0	42.0	30.0	0.3	NK 32/30	35100	56700	8	13	102 g
32.0	45.0	17.0	0.3	RNA 49/28	24750	30150	8	13	73 g
32.0	45.0	30.0	0.3	RNA 69/28	40950	56700	8	13	135 g
32.0	47.0	22.0	0.6	NKS 32	34200	39150	8	13	110 g
32.0	45.0	17.0	0.3	RNA 49/28-2RS	22590	32850	8	13	73 g
32.0	45.0	30.0	0.3	RNA 69/28-2RS	35640	58950	8	13	135 g
35.0	45.0	20.0	0.3	NK 35/20	27900	43650	7.5	12	74 g
35.0	45.0	30.0	0.3	NK 35/30	41400	72900	7.5	12	122 g
35.0	47.0	17.0	0.3	RNA 4906	25650	31950	7.5	12	69 g
35.0	47.0	30.0	0.3	RNA 6906	44100	63900	7.5	12	126 g
35.0	50.0	22.0	0.6	NKS 35	35550	42300	7.5	12	118 g
35.0	47.0	17.0	0.3	RNA 4906-2RS	21510	25650	7.5	12	69 g

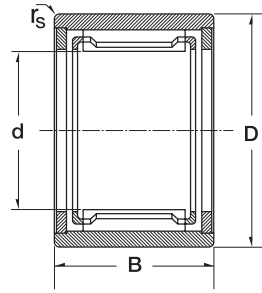
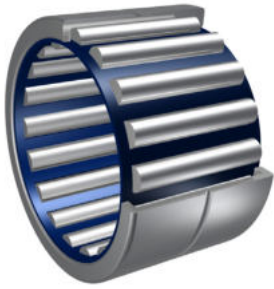
NK滚针轴承



6

Dimension (mm)				Designation/Type GD	*Basic Load Rating		*Limiting Speed x1000rpm		Mass (g) approx.
d	D	B	r _s		C, dyn. N	C, stat. N	Grease	Oil	
35.0	47.0	30.0	0.3	RNA 6906-2RS	44100	63900	7.5	12	126 g
37.0	47.0	20.0	0.3	NK 37/20	25200	39150	7	11	77 g
37.0	47.0	30.0	0.3	NK 37/30	65700	37800	7	11	113 g
37.0	52.0	22.0	0.6	NKS 37	37350	45000	7	11	123 g
38.0	48.0	20.0	0.3	NK 38/20	26100	40500	7	11	79 g
38.0	48.0	30.0	0.3	NK 38/30	38700	68400	7	11	116 g
40.0	50.0	20.0	0.3	NK 40/20	30150	50400	6.7	10	83 g
40.0	50.0	30.0	0.3	NK 40/30	39600	71100	6.7	10	125 g
40.0	52.0	20.0	0.6	RNA 49/32	31050	42750	6.7	10	89 g
40.0	52.0	36.0	0.6	RNA 69/32	42570	81000	6.7	10	162 g
40.0	55.0	22.0	0.6	NKS 40	38250	48600	6.7	10	129 g
40.0	52.0	20.0	0.6	RNA 49/32-2RS	27720	45900	6.7	10	89 g
40.0	52.0	36.0	0.6	RNA 69/32-2RS	42570	81000	6.7	10	162 g
42.0	52.0	20.0	0.3	NK 42/20	27000	44100	6.7	10	86 g
42.0	52.0	30.0	0.3	NK 42/30	40050	73800	6.7	10	130 g
42.0	55.0	20.0	0.6	RNA 4907	31950	45000	6.7	10	107 g
42.0	55.0	36.0	0.6	RNA 6907	43560	83700	6.7	10	193 g
42.0	55.0	20.0	0.6	RNA 4907-2RS	26550	35550	6.7	10	107 g
42.0	55.0	36.0	0.6	RNA 6907-2RS	43560	83700	6.7	10	193 g
43.0	53.0	20.0	0.3	NK 43/20	27450	45900	6.3	9.5	86 g
43.0	53.0	30.0	0.3	NK 43/30	40950	76500	6.3	9.5	133 g
43.0	58.0	22.0	0.6	NKS 43	39600	51300	6.3	9.5	139 g
45.0	55.0	20.0	0.3	NK 45/20	31500	55800	6.3	9.5	91 g
45.0	55.0	30.0	0.3	NK 45/30	46800	92700	6.3	9.5	139 g
45.0	60.0	22.0	0.6	NKS 45	40950	54000	6	9	145 g
47.0	57.0	20.0	0.3	NK 47/20	29250	50400	6	9	94 g
47.0	57.0	30.0	0.3	NK 47/30	43650	84600	6	9	142 g
48.0	62.0	22.0	0.6	RNA 4908	43650	60300	5.6	8.5	140 g
48.0	62.0	40.0	0.6	RNA 6908	60390	112500	5.6	8.5	256 g
48.0	62.0	22.0	0.6	RNA 4908-2RS	36900	47700	5.6	8.5	140 g

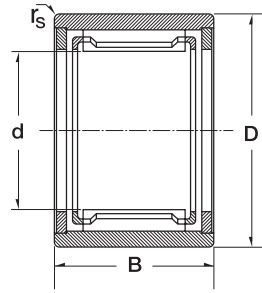
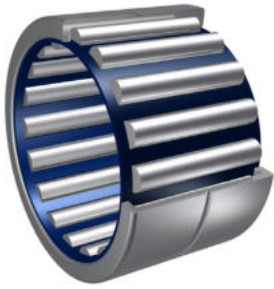
NK滚针轴承



7

Dimension (mm)				Designation/Type	*Basic Load Rating		*Limiting Speed x1000rpm		Mass (g) approx.
d	D	B	r _s		C, dyn. N	C, stat. N	Grease	Oil	
48.0	62.0	40.0	0.6	RNA 6908-2RS	60390	112500	5.6	8.5	256 g
50.0	62.0	25.0	0.6	NK 50/25	43650	78300	5.6	8.5	158 g
50.0	62.0	35.0	0.6	NK 50/35	60300	118800	5.6	8.5	221 g
50.0	65.0	22.0	1	NKS 50	43200	60300	5.6	8.5	157 g
52.0	68.0	22.0	0.6	RNA 4909	45900	65700	5.3	8	182 g
52.0	68.0	40.0	0.6	RNA 6909	63360	123300	5.3	8	338 g
52.0	68.0	22.0	0.6	RNA 4909-2RS	38700	53100	5.3	8	182 g
52.0	68.0	40.0	0.6	RNA 6909-2RS	63360	123300	5.3	8	338 g
55.0	68.0	25.0	0.6	NK 55/25	40950	73800	5	7.5	180 g
55.0	68.0	35.0	0.6	NK 55/35	54000	106200	5	7.5	250 g
55.0	72.0	22.0	1	NKS 55	45900	66600	5	7.5	221 g
58.0	72.0	22.0	0.6	RNA 4910	47700	72000	4.8	7	163 g
58.0	72.0	40.0	0.6	RNA 6910	66330	135000	4.8	7	310 g
58.0	72.0	22.0	0.6	RNA 4910-2RS	40500	57600	4.8	7	163 g
58.0	72.0	40.0	0.6	RNA 6910-2RS	66330	135000	4.8	7	310 g
60.0	72.0	25.0	0.6	NK 60/25	47700	92700	4.8	7	185 g
60.0	72.0	35.0	0.6	NK 60/35	56700	117000	4.8	7	258 g
60.0	80.0	28.0	1.1	NKS 60	63900	88200	4.8	7	335 g
63.0	80.0	25.0	1	RNA 4911	58500	90000	4.5	6.7	255 g
63.0	80.0	45.0	1	RNA 6911	80730	171000	4.5	6.7	470 g
63.0	80.0	25.0	1	RNA 4911-2RS	51480	95400	4.5	6.7	255 g
63.0	80.0	45.0	1	RNA 6911-2RS	76950	150300	4.5	6.7	470 g
65.0	78.0	25.0	0.6	NK 65/25	45000	88200	4.5	6.3	221 g
65.0	78.0	35.0	0.6	NK 65/35	59400	127800	4.3	6.3	310 g
65.0	85.0	28.0	1.1	NKS 65	67500	97200	4.3	6	365 g
68.0	82.0	25.0	0.6	NK 68/25	44550	80100	4	6	241 g
68.0	82.0	35.0	0.6	NK 68/35	63000	125100	4	6	338 g
68.0	85.0	25.0	1	RNA 4912	61200	97200	4	6	275 g
68.0	85.0	45.0	1	RNA 6912	84150	183600	4	6	488 g
68.0	85.0	25.0	1	RNA 4912-2RS	51300	92340	4	6	275 g

NK滚针轴承



8

Dimension (mm)				Designation/Type GD	*Basic Load Rating		*Limiting Speed x1000rpm		Mass (g) approx.
d	D	B	r _s		C, dyn. N	C, stat. N	Grease	Oil	
68.0	85.0	45.0	1	RNA 6912-2RS	80370	163260	4	6	488 g
70.0	85.0	25.0	0.6	NK 70/25	45000	82800	4	6	260 g
70.0	85.0	35.0	0.6	NK 70/35	63900	129600	4	6	370 g
70.0	90.0	28.0	1.1	NKS 70	69300	101700	4	6	380 g
72.0	90.0	25.0	1	RNA 4913	62100	100800	4	6	312 g
72.0	90.0	45.0	1	RNA 6913	85680	190800	4	6	580 g
72.0	90.0	25.0	1	RNA 4913-2RS	51750	99450	4	6	312 g
72.0	90.0	45.0	1	RNA 6913-2RS	81225	169290	4	6	580 g
73.0	90.0	25.0	0.6	NK 73/25	54000	90000	3.8	5.6	302 g
73.0	90.0	35.0	0.6	NK 73/35	76500	140400	3.8	5.6	428 g
75.0	92.0	35.0	1	NK 75/35	78300	145800	6.1	-	445 g
85.0	105.0	35.0	1	NK 85/35	99900	173700	5.4	-	600 g
105.0	125.0	36.0	1	NK 105/36	116100	225000	4.4	-	713 g

www.zen.biz

版权所有。
未经版权所有人明确许可，不得擅自复制、摘录、更改该目录册的任何部分。

v.10 / 18



Bearings for your future