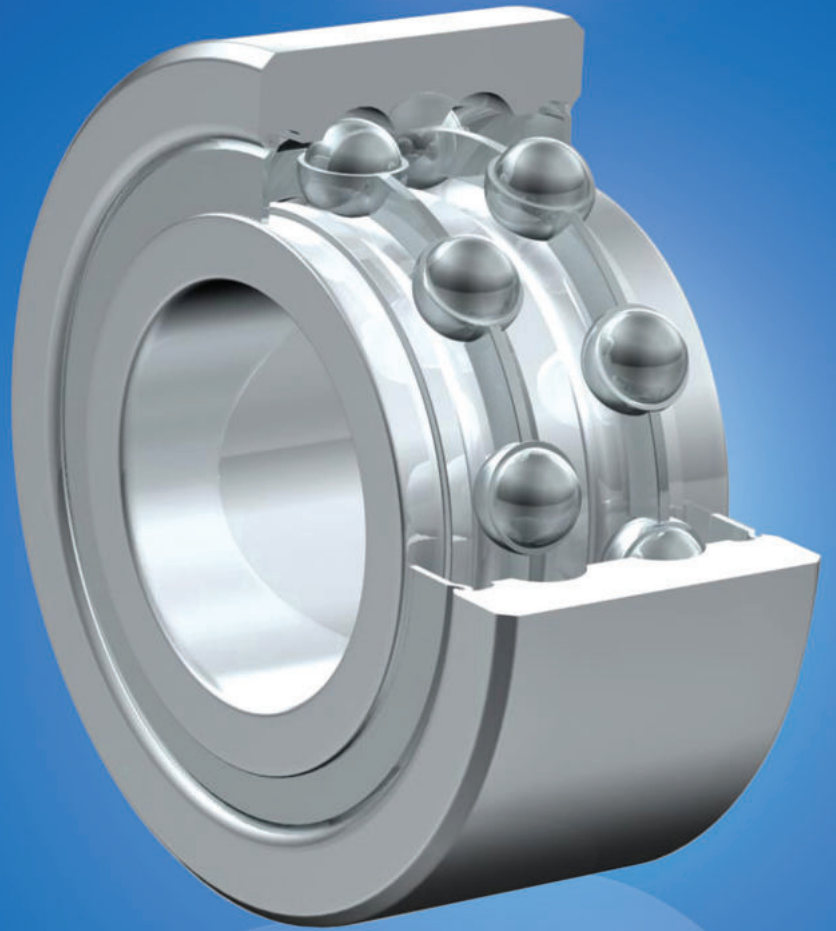


ZON™

BEARINGS FOR YOUR FUTURE



LR滚轮轴承





BEARINGS FOR YOUR FUTURE

灿恩轴承品质卓越，在各种标准及非标应用中使用广泛。
无论数量多少，我们的技术部门都能够根据您的要求定制任何规格的非标轴承。

灿恩除了经营一千余种微型轴承（内径1-10mm,包括英制）之外还提供薄壁、推力、标准公制轴承以及其他各种非标轴承。我们能够按照客户的特殊需求，通过一些新型材料例如陶瓷或者特殊钢材来设计轴承以满足工业，医疗，化学或食品加工行业上的各种应用。

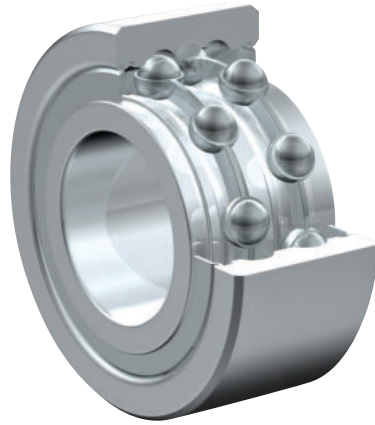
如果您在我们的产品目录册中无法找到您的理想型号，请联系我们经验丰富的销售团队。



灿恩已获得德国ISO 9001 TUV莱茵认证。

莱茵认证被视作轴承行业的最高检验标准，受到国际认可并得到广大客户的肯定，被视为品质和服务的保证。

www.zen.biz



LR滚轮轴承



润滑油



润滑脂



超负荷适用

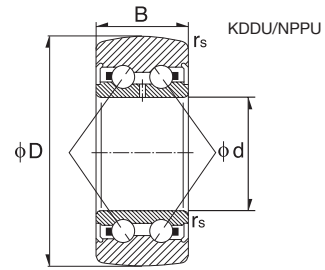
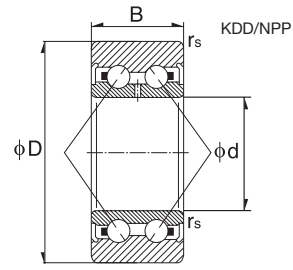


橡胶密封圈（可选）



金属防尘盖（可选）

LR滚轮轴承



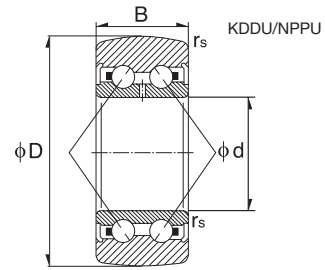
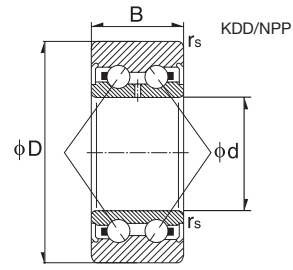
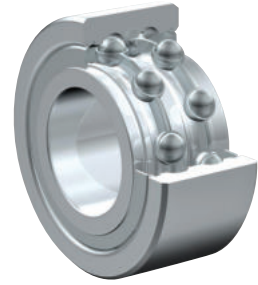
3

Dimension (mm)			Designation/Type			
d	D	B	KDD	KDDU	NPP	NPPU
5.0	16.0	5.0	-	-	-	LR 605 NPPU
5.0	17.0	7.0	-	-	-	LR 50/5 NPPU
6.0	19.0	6.0	-	-	-	LR 606 NPPU
6.0	19.0	9.0	-	-	-	LR 50/6 NPPU
7.0	22.0	6.0	-	-	-	LR 607 NPPU
7.0	22.0	6.0	-	-	-	LR 607 NPP
7.0	22.0	10.0	-	-	-	LR 50/7 NPPU
8.0	24.0	7.0	-	-	-	LR 608 NPPU
8.0	24.0	7.0	-	-	-	LR 608 NPP
8.0	24.0	7.0	-	LR 608 KDDU	-	-
8.0	24.0	7.0	LR 608 KDD	-	-	-
8.0	24.0	11.0	-	-	-	LR 50/8 NPPU
10.0	28.0	8.0	-	-	-	LR 6000 NPPU
10.0	28.0	8.0	-	-	LR 6000 NPP	-
10.0	28.0	12.0	-	-	-	LR 5000 NPPU
10.0	32.0	9.0	-	-	LR 200 NPP	LR 200 NPPU
10.0	32.0	14.0	LR 5200 KDD	LR 5200 KDDU	-	LR 5200 NPPU
12.0	30.0	8.0	-	-	-	LR 6001 NPPU
12.0	30.0	8.0	-	-	LR 6001 NPP	-
12.0	30.0	12.0	-	-	-	LR 5001 NPPU
12.0	35.0	10.0	-	-	LR 201 NPP	LR 201 NPPU
12.0	35.0	15.9	LR 5201 KDD	LR 5201 KDDU	-	LR 5201 NPPU
12.0	42.0	19.0	-	-	-	LR 5301 NPPU
15.0	35.0	9.0	-	-	-	LR 6002 NPPU
15.0	35.0	13.0	-	-	-	LR 5002 NPPU

4

* Load Rating		Radius	* Limiting Speed x1000rpm		Weight (g) approx.
C, dyn. N	C, stat. N		NPP(U)	KDD(U)	
1160	459	0.2	12.0	-	10 g
1650	950	0.2	12.0	-	10 g
1750	710	0.3	11.0	-	10 g
2650	1310	0.3	11.0	-	20 g
2020	790	0.3	10.0	-	10 g
2020	790	0.3	10.0	-	10 g
3300	1690	0.3	10.0	-	20 g
2650	1100	0.3	20.0	-	30 g
2650	1100	0.3	20.0	-	30 g
2650	1100	0.3	-	20.0	30 g
2650	1100	0.3	-	20.0	30 g
4200	2360	0.3	10.0	-	30 g
5000	2490	0.3	16.0	-	20 g
5000	2490	0.3	16.0	-	20 g
4750	2850	0.3	9.0	-	30 g
4350	2130	0.6	13.0	-	50 g
6800	4050	0.6	8.0	11.0	70 g
5300	2750	0.3	15.0	-	25 g
5300	2750	0.3	15.0	-	25 g
4950	3100	0.3	8.0	-	30 g
5600	2700	0.6	12.0	-	50 g
8600	5100	0.6	7.0	10.0	80 g
11300	7100	1.0	5.0	-	120 g
6900	3800	0.3	10.0	-	45 g
6500	4100	0.3	7.0	-	50 g

LR滚轮轴承



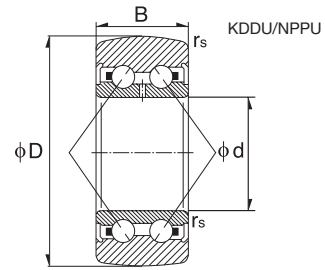
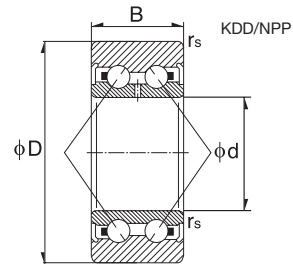
5

Dimension (mm)			Designation/Type			
d	D	B	KDD	KDDU	NPP	NPPU
15.0	40.0	11.0	-	-	LR 202 NPP	LR 202 NPPU
15.0	40.0	15.9	LR 5202 KDD	LR 5202 KDDU	-	LR 5202 NPPU
15.0	47.0	19.0	-	-	-	LR 5302 NPPU
17.0	40.0	14.0	-	-	-	LR 5003 NPPU
17.0	47.0	12.0	-	-	LR 203 NPP	LR 203 NPPU
17.0	47.0	17.5	LR 5203 KDD	LR 5203 KDDU	-	LR 5203 NPPU
17.0	52.0	22.2	-	-	-	LR 5303 NPPU
20.0	47.0	16.0	-	-	-	LR 5004 NPPU
20.0	52.0	14.0	-	-	LR 204 NPP	LR 204 NPPU
20.0	52.0	20.6	LR 5204 KDD	LR 5204 KDDU	-	LR 5204 NPPU
20.0	62.0	22.2	LR 5304 KDD	LR 5304 KDDU	-	LR 5304 NPPU
25.0	52.0	16.0	-	-	-	LR 5005 NPPU
25.0	62.0	15.0	-	-	LR 205 NPP	LR 205 NPPU
25.0	62.0	20.6	LR 5205 KDD	LR 5205 KDDU	-	LR 5205 NPPU
25.0	72.0	25.4	LR 5305 KDD	LR 5305 KDDU	-	LR 5305 NPPU
30.0	62.0	19.0	-	-	-	LR 5006 NPPU
30.0	72.0	16.0	-	-	LR 206 NPP	LR 206 NPPU
30.0	72.0	23.8	LR 5206 KDD	LR 5206 KDDU	-	LR 5206 NPPU
30.0	80.0	30.2	LR 5306 KDD	LR 5306 KDDU	-	LR 5306 NPPU
35.0	68.0	20.0	-	-	-	LR 5007 NPPU
35.0	80.0	17.0	-	-	LR 207 NPP	LR 207 NPPU
35.0	80.0	27.0	LR 5207 KDD	LR 5207 KDDU	-	LR 5207 NPPU
35.0	90.0	34.9	LR 5307 KDD	LR 5307 KDDU	-	LR 5307 NPPU
40.0	75.0	21.0	-	-	-	LR 5008 NPPU
40.0	85.0	18.0	-	-	LR 208 NPP	LR 208 NPPU

6

* Load Rating		Radius	* Limiting Speed x1000rpm		Weight (g) approx.
C, dyn. N	C, stat. N		NPP(U)	KDD(U)	
6500	3300	0.6	11.0	-	70 g
9800	6200	0.6	7.0	10.0	110 g
14600	9200	1.0	5.0	-	150 g
7700	5200	0.3	6.0	-	70 g
8400	4400	0.6	9.0	-	110 g
12600	8200	0.6	5.5	7.0	170 g
17200	11100	0.6	4.7	-	210 g
11500	7700	0.6	5.5	-	120 g
10500	5600	1.0	8.0	-	150 g
15800	10500	1.0	5.0	7.0	230 g
21100	14500	1.1	4.5	6.5	340 g
11600	8100	0.6	4.7	-	150 g
12500	7100	1.0	7.0	-	230 g
18500	13000	1.1	4.5	6.5	340 g
27500	19500	1.1	3.9	5.5	500 g
15800	11800	1.0	4.0	-	250 g
16600	9600	1.0	5.5	-	330 g
24600	21400	1.0	3.5	5.0	510 g
36500	26500	1.1	3.1	4.3	670 g
17600	13100	1.0	4.3	-	300 g
20200	11900	1.1	4.5	-	400 g
30500	22400	1.1	2.8	3.9	660 g
44500	33000	1.5	2.5	3.6	970 g
18400	14600	1.0	3.1	-	370 g
22800	13600	1.1	4.0	-	450 g

LR滚轮轴承



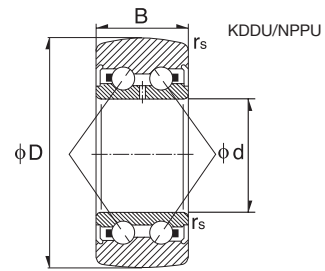
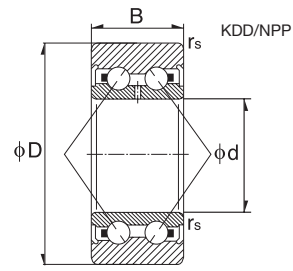
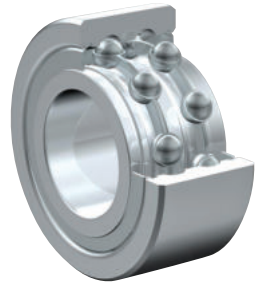
7

Dimension (mm)			Designation/Type			
d	D	B	KDD	KDDU	NPP	NPPU
40.0	85.0	30.2	LR 5208 KDD	LR 5208 KDDU	-	LR 5208 NPPU
40.0	100.0	36.5	LR 5308 KDD	LR 5308 KDDU	-	LR 5308 NPPU
45.0	90.0	19.0	-	-	LR 209 NPP	LR 209 NPPU

* Load Rating		Radius	* Limiting Speed x1000rpm		Weight (g) approx.
C, dyn. N	C, stat. N		NPP(U)	KDD(U)	
34500	25500	1.1	2.5	3.5	750 g
56000	4200	1.5	2.3	3.3	1200 g
22500	13700	1.1	3.6	-	500 g

8

不锈钢LR系列 (滚轮轴承)



Dimension (mm)			Designation/Type			
d	D	B	KDD	KDDU	NPP	NPPU
12.0	35.0	15.9	-	-	-	SLR 5201 NPPU
15.0	40.0	11.0	-	-	-	SLR 202 NPPU
15.0	40.0	15.9	-	-	-	SLR 5202 NPPU
17.0	47.0	17.5	-	-	-	SLR 5203 NPPU
20.0	52.0	20.6	-	-	-	SLR 5204 NPPU
25.0	62.0	15.0	-	-	SLR 205 NPP	-
25.0	62.0	15.0	-	-	-	SLR 205 NPPU

* Load Rating		Radius	* Limiting Speed x1000rpm		Weight (g) approx.
C, dyn. N	C, stat. N		NPP(U)	KDD(U)	
8200	4900	0.6	7.0	-	80 g
5200	2640	0.6	11.0	-	70 g
9000	5800	0.6	7.0	-	110 g
12100	8000	0.6	5.5	-	170 g
16000	10600	1.0	5.0	-	230 g
10000	5680	1.0	7.0	-	230 g
10000	5680	1.0	7.0	-	230 g

www.zen.biz

版权所有。
未经版权所有人明确许可，不得擅自复制、摘录、更改该目录册的任何部分。

v.10 / 18



Bearings for your future