

ZON™
BEARINGS FOR YOUR FUTURE



K滚针保持器架组件





BEARINGS FOR YOUR FUTURE

灿恩轴承品质卓越，在各种标准及非标应用中使用广泛。
无论数量多少，我们的技术部门都能够根据您的要求定制任何规格的非标轴承。

灿恩除了经营一千余种微型轴承（内径1-10mm,包括英制）之外还提供薄壁、推力、标准公制轴承以及其他各种非标轴承。我们能够按照客户的特殊需求，通过一些新型材料例如陶瓷或者特殊钢材来设计轴承以满足工业，医疗，化学或食品加工行业上的各种应用。

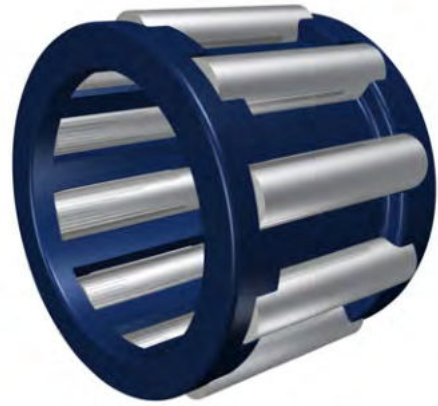
如果您在我们的产品目录册中无法找到您的理想型号，请联系我们经验丰富的销售团队。



灿恩已获得德国ISO 9001 TUV莱茵认证。

莱茵认证被视作轴承行业的最高检验标准，受到国际认可并得到广大客户的肯定，被视为品质和服务的保证。

www.zen.biz



K滚针保持器架组件



润滑油

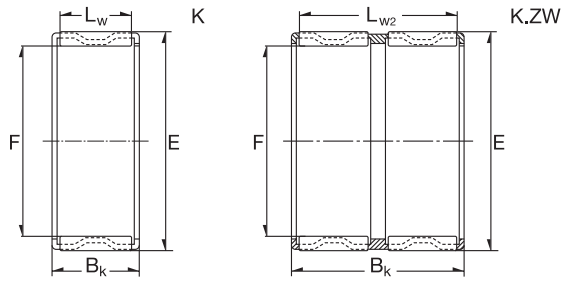


高速运转适用



超负荷适用

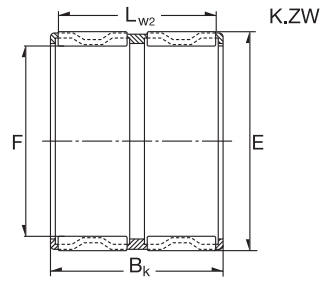
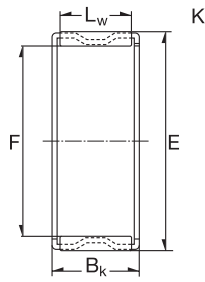
K滚针保持器架组件



3

Dimension (mm)			Designation/Type	*Basic Load Rating		*LimitingSpeed x1000rpm Oil	Mass (g) approx.
F	E	BK		C, dyn. N	C, stat. N		
5.0	8.0	8.0	K 5X8X8 TN	2300	1880	37.0	>1 g
5.0	8.0	10.0	K 5X8X10 TN	2800	2450	37.0	>1 g
6.0	9.0	8.0	K 6X9X8 TN	2560	2240	35.0	>1 g
6.0	9.0	10.0	K 6X9X10 TN	3300	3100	35.0	1 g
6.0	10.0	13.0	K 6X9X13 TN	3500	2800	33.0	>1 g
7.0	10.0	8.0	K 7X10X8 TN	2750	2550	32.0	1 g
7.0	10.0	10.0	K 7-X10X10 TN	3350	3400	32.0	1 g
8.0	11.0	8.0	K 8X11X8 TN	3000	2900	30.0	1 g
8.0	11.0	10.0	K 8X11X10 TN	3830	3950	30.0	1 g
8.0	11.0	13.0	K 8X11X13 TN	5000	5700	30.0	1 g
8.0	12.0	10.0	K 8X12X10 TN	4900	4600	30.0	1 g
9.0	12.0	10.0	K 9X12X10 TN	4200	4700	30.0	1 g
9.0	12.0	13.0	K 9X12X13 TN	5500	6700	30.0	1 g
10.0	13.0	10.0	K 10X13X10 TN	4500	5250	27.0	1 g
10.0	13.0	13.0	K 10X13X13 TN	6000	7600	27.0	2 g
10.0	13.0	16.0	K 10X13X16 TN	6300	7800	27.0	2 g
10.0	14.0	10.0	K 10X14X10 TN	7000	7900	26.0	2 g
10.0	14.0	13.0	K 10X14X13 TN	8000	9100	27.0	4 g
10.0	16.0	12.0	K 10X16X12 TN	7000	9300	27.0	3 g
12.0	15.0	9.0	K 12X15X9 TN	4120	5210	25.0	2 g
12.0	15.0	10.0	K 12X15X10 TN	4320	5730	25.0	1 g
12.0	15.0	13.0	K 12X15X13 TN	6000	8100	25.0	2 g
12.0	16.0	8.0	K 12X16X8 TN	4200	4700	25.0	2 g
12.0	16.0	10.0	K 12X16X10 TN	6000	6900	25.0	3 g
12.0	16.0	13.0	K 12X16X13 TN	7900	9200	25.0	3 g
12.0	17.0	13.0	K 12X17X13 TN	9300	10000	24.0	4 g
12.0	18.0	12.0	K 12X18X12 TN	9800	8000	24.0	5 g
12.0	15.0	20.0	K 12X15X20 TN	8200	12000	25.0	3 g
14.0	17.0	10.0	K 14X17X10	5100	6800	23.0	4 g
14.0	17.0	17.0	K 14X17X17	9300	14000	23.0	6 g
14.0	18.0	10.0	K 14X18X10	6800	8300	23.0	4 g

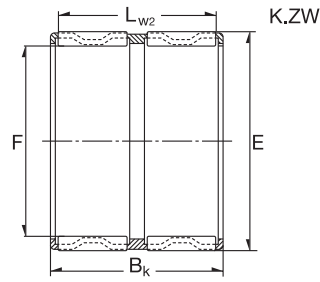
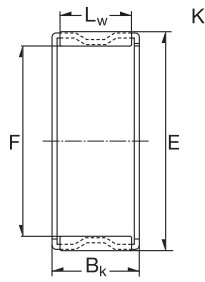
K滚针保持器架组件



4

Dimension (mm)			Designation/Type	*Basic Load Rating		*Limiting Speed x1000rpm Oil	Mass (g) approx.
F	E	BK		C, dyn. N	C, stat. N		
14.0	18.0	13.0	K 14X18X13	8100	9800	23.0	6 g
14.0	18.0	14.0	K 14X18X14	9200	12000	23.0	5 g
14.0	18.0	15.0	K 14X18X15	10000	13000	23.0	7 g
14.0	18.0	17.0	K 14X18X17	10500	13900	23.0	-
14.0	20.0	12.0	K 14X20X12	9900	10500	22.0	18 g
15.0	18.0	14.0	K 15X18X14	7500	11000	23.0	5 g
15.0	18.0	17.0	K 15X18X17	9600	15900	23.0	5 g
15.0	19.0	10.0	K 15X19X10	7200	9000	23.0	5 g
15.0	19.0	13.0	K 15X19X13	8300	9800	22.0	7 g
15.0	19.0	17.0	K 15X19X17	10300	15000	22.0	8 g
15.0	19.0	24.0	K 15X19X24	12800	20100	22.0	10 g
15.0	20.0	13.0	K 15X20X13	9700	11000	22.0	8 g
15.0	21.0	12.0	K 15X21X12	10000	13000	22.0	10 g
15.0	21.0	15.0	K 15X21X15	13800	16000	22.0	13 g
15.0	21.0	21.0	K 15X21X21	18000	24000	22.0	18 g
16.0	20.0	10.0	K 16X20X10	7600	9700	22.0	5 g
16.0	20.0	13.0	K 16X20X13	8700	11300	22.0	7 g
16.0	20.0	17.0	K 16X20X17	11200	16300	22.0	9 g
16.0	21.0	10.0	K 16X21X10	9000	12000	22.0	6 g
16.0	22.0	12.0	K 16X22X12	11000	12000	21.0	10 g
16.0	22.0	13.0	K 16X22X13	12000	13400	21.0	11 g
16.0	22.0	16.0	K 16X22X16	14300	17000	21.0	13 g
16.0	22.0	20.0	K 16X22X20	18000	22300	21.0	16 g
16.0	23.0	14.0	K 16X23X14	19000	21000	19.0	20 g
16.0	24.0	20.0	K 16X24X20	21100	23000	20.0	24 g
17.0	21.0	10.0	K 17X21X10	7900	10100	21.0	5 g
17.0	21.0	13.0	K 17X21X13	10000	14100	21.0	7 g
17.0	21.0	17.0	K 17X21X17	12000	17400	21.0	9 g
17.0	23.0	14.0	K 17X23X14	11000	15000	21.0	11 g
18.0	22.0	10.0	K 18X22X10	8200	9900	20.0	6 g
18.0	22.0	13.0	K 18X22X13	9000	12100	20.0	7 g

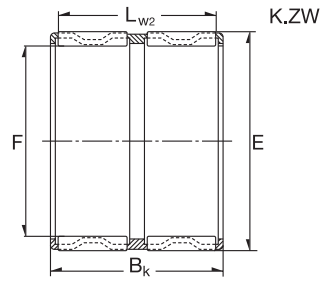
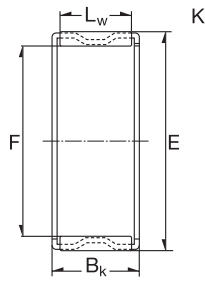
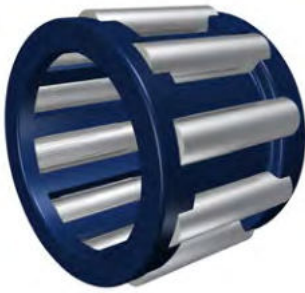
K滚针保持器架组件



5

Dimension (mm)			Designation/Type	*Basic Load Rating		*Limiting Speed x1000rpm Oil	Mass (g) approx.
F	E	BK		C, dyn. N	C, stat. N		
18.0	22.0	17.0	K 18X22X17	11900	17600	20.0	10 g
18.0	24.0	12.0	K 18X24X12	11200	12900	20.0	11 g
18.0	24.0	13.0	K 18X24X13	12900	14900	20.0	12 g
18.0	24.0	13.5	K 18X24X13.5	12900	14900	20.0	13 g
18.0	24.0	20.0	K 18X24X20	20000	26500	20.0	19 g
18.0	25.0	14.0	K 18X25X14	16500	18800	20.0	14 g
18.0	25.0	22.0	K 18X25X22	22900	28400	20.0	24 g
18.0	26.0	14.0	K 18X26X14	18000	20000	18.0	19 g
18.0	28.0	16.0	K 18X28X16	19000	18400	19.0	24 g
19.0	23.0	13.0	K 19X23X13	9300	13000	20.0	8 g
19.0	23.0	17.0	K 19X23X17	12000	18600	20.0	11 g
20.0	24.0	10.0	K 20X24X10	8700	12100	19.0	6 g
20.0	24.0	12.0	K 20X24X12	9600	13800	19.0	8 g
20.0	24.0	13.0	K 20X24X13	9600	13800	19.0	8 g
20.0	24.0	17.0	K 20X24X17	12400	20000	19.0	11 g
20.0	26.0	12.0	K 20X26X12	13100	15700	19.0	13 g
20.0	26.0	16.0	K 20X26X16	18000	25000	18.5	17 g
20.0	26.0	17.0	K 20X26X17	18700	25500	19.0	18 g
20.0	26.0	20.0	K 20X26X20	20600	28500	18.0	22 g
20.0	28.0	20.0	K 20X28X20	23400	28000	18.0	26 g
20.0	28.0	25.0	K 20X28X25	30000	28500	18.0	36 g
20.0	30.0	30.0	K 20X30X30	35000	41000	19.0	56 g
21.0	25.0	13.0	K 21X25X13	9600	14500	19.0	9 g
21.0	25.0	17.0	K 21X25X17	12800	21000	18.0	12 g
22.0	26.0	10.0	K 22X26X10	8700	12900	18.0	7 g
22.0	26.0	13.0	K 22X26X13	10000	15400	18.0	9 g
22.0	26.0	17.0	K 22X26X17	13100	22100	18.0	12 g
22.0	27.0	13.0	K 22X27X13	14000	23000	18.0	10 g
22.0	28.0	17.0	K 22X28X17	19000	26500	19.0	19 g
22.0	28.0	23.0	K 22X28X23	20000	27000	17.0	26 g
22.0	29.0	16.0	K 22X29X16	19500	25000	17.0	22 g

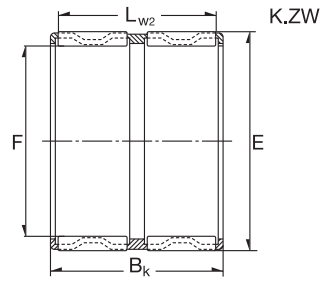
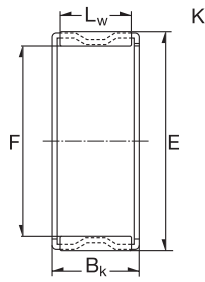
K滚针保持器架组件



6

Dimension (mm)			Designation/Type	*Basic Load Rating		*Limiting Speed x1000rpm Oil	Mass (g) approx.
F	E	BK		C, dyn. N	C, stat. N		
22.0	30.0	15.0	K 22X30X15 TN	19600	22900	18.9	14 g
22.0	30.0	20.0	K 22X30X20	21000	23500	18.9	28 g
23.0	32.0	24.0	K 22X32X24	33500	39500	16.0	43 g
24.0	35.0	16.0	K 23X35X16 TN	24000	23400	15.0	30 g
24.0	28.0	10.0	K 24X28X10	9400	14300	17.0	8 g
24.0	28.0	13.0	K 24X28X13	10500	17000	17.0	10 g
24.0	28.0	17.0	K 24X28X17	14000	24500	17.0	13 g
24.0	29.0	13.0	K 24X29X13	13100	19100	16.0	13 g
24.0	30.0	17.0	K 24X30X17	19000	27000	16.0	21 g
24.0	30.0	31.0	K 24X30X31	27000	43000	16.0	39 g
25.0	29.0	10.0	K 25X29X10	9700	14900	16.0	8 g
25.0	29.0	13.0	K 25X29X13	10800	17900	16.0	10 g
25.0	29.0	17.0	K 25X29X17	14500	25500	16.0	13 g
25.0	30.0	13.0	K 25X30X13	14100	21300	16.0	12 g
25.0	30.0	20.0	K 25X30X20	21100	28000	16.0	20 g
25.0	30.0	25.0	K 25X30X25	21700	40400	15.0	21 g
25.0	30.0	26.0	K 25X30X26	20100	26500	15.0	21 g
25.0	31.0	17.0	K 25X31X17	19000	28000	16.0	21 g
25.0	31.0	21.0	K 25X31X21	24100	37500	16.0	26 g
25.0	32.0	16.0	K 25X32X16	20500	27500	15.0	24 g
25.0	33.0	20.0	K 25X33X20	28000	37500	15.0	32 g
25.0	33.0	24.0	K 25X33X24	33900	46500	15.0	38 g
25.0	34.0	18.0	K 25X34X18	48000	67000	15.0	32 g
25.0	35.0	30.0	K 25X35X30	46500	61500	14.0	65 g
25.0	30.0	26.0	K 25X30X26	21000	35000	14.0	27 g
26.0	30.0	10.0	K 26X30X10	9500	15500	16.0	9 g
26.0	30.0	13.0	K 26X30X13	11100	18700	16.0	11 g
26.0	30.0	17.0	K 26X30X17	14700	27000	16.0	15 g
26.0	31.0	13.0	K 26X31X13	12400	18400	15.0	9 g
26.0	30.0	22.0	K 26X30X22	15200	28000	16.0	12 g
27.0	32.0	17.0	K 27X32X17	16000	34000	17.0	29 g

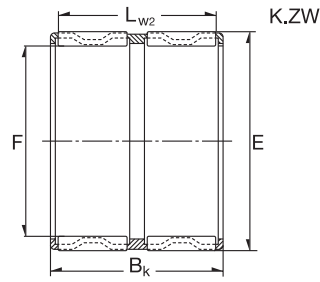
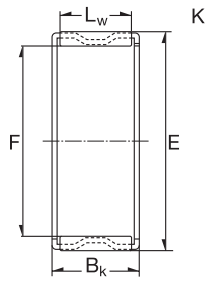
K滚针保持器架组件



7

Dimension (mm)			Designation/Type	*Basic Load Rating		*Limiting Speed x1000rpm Oil	Mass (g) approx.
F	E	BK		C, dyn. N	C, stat. N		
28.0	32.0	16.5	K 28X32X16.5	15000	32400	14.0	18 g
28.0	32.0	17.0	K 28X32X17	15000	32400	14.0	18 g
28.0	33.0	13.0	K 28X33X13	14800	23600	14.0	15 g
28.0	33.0	17.0	K 28X33X17	19100	33000	14.0	19 g
28.0	33.0	27.0	K 28X33X27 TN	22800	40500	14.0	19 g
28.0	34.0	17.0	K 28X34X17	21300	35000	14.0	24 g
28.0	35.0	16.0	K 28X35X16	21000	29000	14.0	29 g
28.0	35.0	18.0	K 28X35X18	23500	33500	14.0	31 g
28.0	35.0	20.0	K 28X35X20	24000	34000	14.0	35 g
28.0	35.0	27.0	K 28X35X27	34500	54500	14.0	47 g
28.0	36.0	16.0	K 28X36X16	34000	47000	11.0	40 g
28.0	40.0	18.0	K 28X40X18	33000	36500	12.0	50 g
28.0	40.0	25.0	K 28X40X25	45000	54500	12.0	71 g
30.0	34.0	13.0	K 30X34X13	11800	21200	13.0	14 g
30.0	35.0	13.0	K 30X35X13	11500	25000	13.0	16 g
30.0	35.0	17.0	K 30X35X17	19100	33500	13.0	21 g
30.0	35.0	27.0	K 30X35X27	30000	58500	13.0	33 g
30.0	37.0	16.0	K 30X37X16	22500	33000	13.0	26 g
30.0	38.0	25.0	K 30X38X25	16000	39000	13.0	43 g
30.0	40.0	18.0	K 30X40X18	31500	39500	12.0	44 g
30.0	40.0	30.0	K 30X40X30	48500	68500	13.0	78 g
30.0	35.0	26.0	K 30X35X26	23500	43500	12.0	32 g
32.0	37.0	13.0	K 32X37X13	15000	25000	12.0	18 g
32.0	37.0	17.0	K 32X37X17	19400	35000	12.0	22 g
32.0	37.0	27.0	K 32X37X27	29500	59500	12.0	36 g
32.0	37.0	28.0	K 32X37X28 TN	23100	43000	12.0	22 g
32.0	38.0	16.0	K 32X38X16	21000	34000	12.0	25 g
32.0	38.0	20.0	K 32X38X20	26000	44500	12.0	31 g
32.0	38.0	26.0	K 32X38X26 TN	27000	46500	12.0	25 g
32.0	39.0	16.0	K 32X39X16	23500	35000	12.0	36 g
32.0	39.0	18.0	K 32X39X18	26000	40500	12.0	37 g

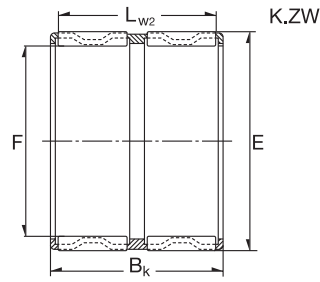
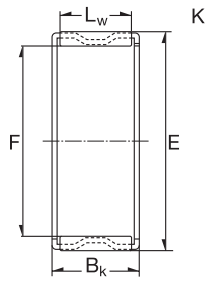
K滚针保持器架组件



8

Dimension (mm)			Designation/Type	*Basic Load Rating		*Limiting Speed x1000rpm Oil	Mass (g) approx.
F	E	BK		C, dyn. N	C, stat. N		
32.0	40.0	20.0	K 32X40X20	37000	40500	12.0	48 g
32.0	40.0	36.0	K 32X40X36	53500	91500	12.0	73 g
32.0	46.0	32.0	K 32X46X32	65500	82500	11.0	119 g
32.0	40.0	42.0	K 32X40X42 TN	49500	83500	12.0	77 g
35.0	40.0	13.0	K 35X40X13	15800	27500	11.0	18 g
35.0	40.0	17.0	K 35X40X17	20300	38000	11.0	25 g
35.0	40.0	25.0	K 35X40X25	29000	59500	11.0	31 g
35.0	40.0	27.0	K 35X40X27 TN	24500	48000	11.0	23 g
35.0	40.0	27.0	K 35X40X27	27800	62100	11.0	28 g
35.0	40.0	30.0	K 35X40X30	25000	49500	11.0	43 g
35.0	42.0	16.0	K 35X42X16	23900	37000	11.0	34 g
35.0	42.0	18.0	K 35X42X18	27000	42500	11.0	39 g
35.0	42.0	30.0	K 35X42X30	38500	67500	11.0	62 g
35.0	43.0	18.0	K 35X43X18	28000	41500	11.0	38 g
35.0	45.0	20.0	K 35X45X20	36500	49500	10.0	55 g
35.0	45.0	30.0	K 35X45X30	52500	78500	10.0	80 g
35.0	45.0	49.0	K 35X45X49	81500	13400	10.0	120 g
35.0	40.0	30.0	K 35X40X30	31500	65500	11.0	48 g
35.0	42.0	20.0	K 35X42X20	29500	48500	11.0	41 g
36.0	41.0	30.0	K 36X41X30	23000	43000	11.0	52 g
36.0	42.0	16.0	K 36X42X16	24000	42000	11.0	50 g
37.0	42.0	17.0	K 37X42X17	21900	42500	10.0	25 g
37.0	42.0	27.0	K 37X42X27	31500	67500	10.0	40 g
37.0	45.0	26.0	K 37X45X26	43500	73500	10.0	60 g
38.0	43.0	17.0	K 38X43X17	20000	38000	10.0	26 g
38.0	43.0	27.0	K 38X43X27	31000	67500	10.0	43 g
38.0	46.0	20.0	K 38X46X20	35000	56500	10.0	46 g
38.0	46.0	32.0	K 38X46X32	54500	98500	10.0	72 g
39.0	44.0	24.0	K 39X44X24	28000	58500	10.0	38 g
39.0	44.0	26.0	K 39X44X26	27000	55500	10.0	29 g
40.0	44.0	13.0	K 40X44X13	13500	28000	10.0	20 g

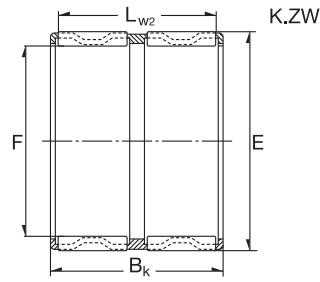
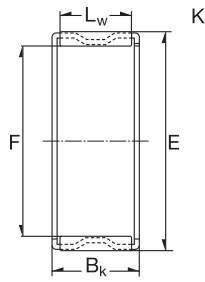
K滚针保持器架组件



9

Dimension (mm)			Designation/Type	*Basic Load Rating		*LimitingSpeed x1000rpm Oil	Mass (g) approx.
F	E	BK		C, dyn. N	C, stat. N		
40.0	45.0	13.0	K 40X45X13	17100	32000	10.0	21 g
40.0	45.0	17.0	K 40X45X17	20900	41000	10.0	27 g
40.0	45.0	21.0	K 40X45X21	24400	49500	10.0	36 g
40.0	45.0	27.0	K 40X45X27	32500	72500	10.0	46 g
40.0	46.0	17.0	K 40X46X17	24500	44500	9.0	30 g
40.0	47.0	18.0	K 40X47X18	29000	49500	9.0	45 g
40.0	47.0	20.0	K 40X47X20	32000	56500	9.0	42 g
40.0	48.0	20.0	K 40X48X20	35500	58500	9.0	57 g
40.0	45.0	30.0	K 40X45X30	26000	53500	9.0	48 g
42.0	47.0	13.0	K 42X47X13	17300	33000	9.0	22 g
42.0	47.0	17.0	K 42X47X17	21100	42500	9.0	31 g
42.0	47.0	25.0	K 42X47X25 TN	27000	57500	9.0	25 g
42.0	47.0	27.0	K 42X47X27	33000	74500	9.0	46 g
42.0	48.0	35.0	K 42X48X35	35000	76000	9.0	60 g
42.0	50.0	18.0	K 42X50X18	31000	49500	9.0	53 g
42.0	50.0	20.0	K 42X50X20	34500	56500	9.0	54 g
42.0	47.0	30.0	K 42X47X30	31000	75500	9.0	54 g
43.0	48.0	17.0	K 43X48X17	21000	42500	9.0	29 g
43.0	48.0	27.0	K 43X48X27	33000	74500	9.0	45 g
43.0	50.0	18.0	K 43X50X18	30500	53500	9.0	48 g
45.0	49.0	19.0	K 45X49X19	17500	40000	8.0	27 g
45.0	50.0	17.0	K 45X50X17	22000	45000	8.0	25 g
45.0	50.0	27.0	K 45X50X27	34000	79500	8.0	50 g
45.0	50.0	32.0	K 45X50X32 TN	38000	90500	8.0	45 g
45.0	52.0	18.0	K 45X52X18	31000	56500	8.0	51 g
45.0	52.0	21.0	K 45X52X21 TN	39500	57500	8.0	32 g
45.0	53.0	20.0	K 45X53X20	38500	66500	8.0	62 g
45.0	53.0	21.0	K 45X53X21	38000	66500	8.0	65 g
45.0	53.0	22.0	K 45X53X22	42000	66500	8.0	68 g
45.0	53.0	28.0	K 45X53X28	51500	97500	8.0	78 g
45.0	59.0	18.0	K 45X59X18 TN	43500	53500	7.0	60 g

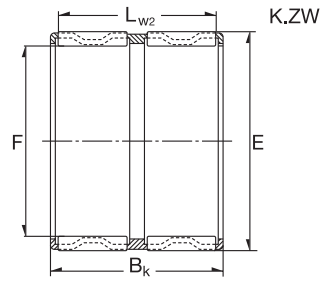
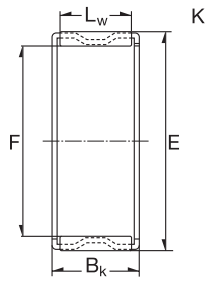
K滚针保持器架组件



10

Dimension (mm)			Designation/Type	*Basic Load Rating		*Limiting Speed x1000rpm Oil	Mass (g) approx.
F	E	BK		C, dyn. N	C, stat. N		
45.0	59.0	32.0	K 45X59X32	72500	101500	7.0	145 g
45.0	59.0	36.0	K 45X59X36	75500	108500	7.0	195 g
45.0	51.0	36.0	K 45X51X36	44500	98500	7.0	85 g
47.0	52.0	17.0	K 47X52X17	22800	48500	8.0	32 g
47.0	52.0	27.0	K 47X52X27	34500	82500	8.0	50 g
47.0	53.0	25.0	K 47X53X25	38000	81500	8.0	53 g
47.0	55.0	28.0	K 47X55X28	52500	99500	7.5	62 g
48.0	54.0	19.0	K 48X54X19	30000	60500	7.5	44 g
48.0	54.0	25.0	K 48X54X25	31000	91000	7.5	55 g
50.0	55.0	13.5	K 50X55X13.5	17500	36000	7.5	31 g
50.0	55.0	17.0	K 50X55X17	21400	46500	7.5	35 g
50.0	55.0	20.0	K 50X55X20	26000	59500	7.5	39 g
50.0	55.0	30.0	K 50X55X30	38500	96500	7.5	59 g
50.0	57.0	18.0	K 50X57X18	33000	62500	7.0	53 g
50.0	58.0	20.0	K 50X58X20	35000	61500	7.0	64 g
50.0	58.0	25.0	K 50X58X25	43500	80500	7.0	81 g
52.0	57.0	12.0	K 52X57X12	17500	36000	7.0	24 g
55.0	60.0	20.0	K 55X60X20	28000	65500	6.5	43 g
55.0	60.0	27.0	K 55X60X27	37500	96500	6.5	60 g
55.0	60.0	30.0	K 55X60X30	40500	10300	6.5	68 g
55.0	61.0	20.0	K 55X61X20	41000	11000	6.5	56 g
55.0	62.0	18.0	K 55X62X18	35000	68500	6.5	58 g
55.0	63.0	15.0	K 55X63X15	24500	40500	6.5	53 g
55.0	63.0	20.0	K 55X63X20	39500	79500	6.5	73 g
55.0	63.0	25.0	K 55X63X25	49500	99500	6.5	88 g
55.0	63.0	32.0	K 55X63X32	61500	129500	6.5	117 g
55.0	60.0	40.0	K 55X60X40	48000	132000	6.5	96 g
56.0	61.0	20.0	K 56X61X20	27000	64500	6.5	45 g
58.0	63.0	17.0	K 58X63X17	21500	63500	6.0	42 g
58.0	64.0	19.0	K 58X64X19	24500	77500	6.0	53 g
58.0	65.0	18.0	K 58X65X18	34500	69500	6.0	52 g

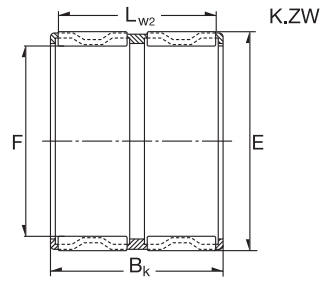
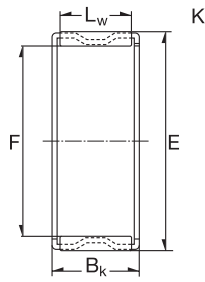
K滚针保持器架组件



11

Dimension (mm)			Designation/Type	*Basic Load Rating		*LimitingSpeed x1000rpm Oil	Mass (g) approx.
F	E	BK		C, dyn. N	C, stat. N		
58.0	65.0	38.0	K 58X65X38	48500	106500	6.0	106 g
60.0	65.0	20.0	K 60X65X20	29000	71500	6.0	50 g
60.0	65.0	30.0	K 60X65X30	42000	115500	6.0	71 g
60.0	68.0	20.0	K 60X68X20	43000	84500	5.5	79 g
60.0	68.0	23.0	K 60X68X23	49000	100500	5.5	94 g
60.0	68.0	25.0	K 60X68X25	52500	110500	5.5	97 g
60.0	68.0	27.0	K 60X68X27	59000	120500	6.0	98 g
60.0	75.0	42.0	K 60X75X42	11300	19200	5.5	240 g
60.0	66.0	33.0	K 60X66X33	45500	111500	6.0	104 g
60.0	66.0	40.0	K 60X66X40	57500	150500	5.5	116 g
60.0	68.0	30.0	K 60X68X30	44000	87500	5.5	136 g
60.0	68.0	34.0	K 60X68X34	47500	95500	5.5	140 g
62.0	70.0	40.0	K 62X70X40	65500	145500	5.5	147 g
63.0	70.0	21.0	K 63X70X21	45000	100500	5.5	75 g
64.0	70.0	16.0	K 64X70X16	27500	59500	5.5	53 g
65.0	70.0	20.0	K 65X70X20	30000	76500	5.5	49 g
65.0	70.0	30.0	K 65X70X30	43500	123500	5.5	83 g
65.0	73.0	23.0	K 65X73X23	45500	93500	5.5	100 g
65.0	73.0	30.0	K 65X73X30	56500	122500	5.5	126 g
68.0	74.0	20.0	K 68X74X20	35000	83500	5.5	65 g
68.0	74.0	30.0	K 68X74X30	46000	117500	5.5	97 g
68.0	74.0	35.0	K 68X74X35	48000	124500	5.5	116 g
68.0	75.0	32.0	K 68X75X32	53500	127500	4.5	120 g
70.0	76.0	20.0	K 70X76X20	35500	85500	4.5	70 g
70.0	76.0	30.0	K 70X76X30	51500	138500	4.5	100 g
70.0	78.0	25.0	K 70X78X25	51500	111500	4.5	115 g
70.0	78.0	30.0	K 70X78X30	59500	134500	4.5	136 g
70.0	80.0	30.0	K 70X80X30	72500	147500	4.5	150 g
70.0	78.0	46.0	K 70X78X46	77500	18800	4.5	230 g
72.0	80.0	20.0	K 72X80X20	41000	84500	4.5	94 g
73.0	79.0	20.0	K 73X79X20	36500	99500	4.5	69 g

K滚针保持器架组件



12

Dimension (mm)			Designation/Type	*Basic Load Rating		*Limiting Speed x1000rpm Oil	Mass (g) approx.
F	E	BK		C, dyn. N	C, stat. N		
75.0	81.0	20.0	K 75X81X20	37000	93500	4.5	72 g
75.0	81.0	30.0	K 75X81X30	51500	142000	4.5	106 g
75.0	83.0	23.0	K 75X83X23	49500	108000	4.0	113 g
75.0	83.0	30.0	K 75X83X30	61500	142000	4.0	174 g
75.0	83.0	35.0	K 75X83X35	62500	146500	4.0	165 g
75.0	83.0	40.0	K 75X83X40	72500	176500	4.0	190 g
80.0	86.0	20.0	K 80X86X20	38000	97500	4.0	76 g
80.0	86.0	30.0	K 80X86X30	55500	158500	4.0	114 g
80.0	88.0	30.0	K 80X88X30	71500	178500	4.0	141 g
80.0	88.0	40.0	K 80X88X40	75500	191500	4.0	204 g
80.0	88.0	46.0	K 80X88X46	87500	23000	4.0	235 g
85.0	92.0	20.0	K 85X92X20	44000	107500	3.5	96 g
90.0	87.0	20.0	K 90X97X20	44500	112500	3.0	103 g
90.0	98.0	27.0	K 90X98X27	60500	149500	3.0	150 g
90.0	98.0	30.0	K 90X98X30	67500	171500	3.0	172 g
95.0	102.0	20.0	K 95X102X20	45500	122500	2.9	110 g
95.0	103.0	30.0	K 95X103X30	68500	179500	2.9	177 g
95.0	103.0	40.0	K 95X103X40	82500	227500	2.9	250 g
100.0	107.0	21.0	K 100X107X21	47500	126500	2.7	120 g
100.0	108.0	27.0	K 100X108X27	56500	142500	2.7	176 g
100.0	108.0	30.0	K 100X108X30	70500	187500	2.7	190 g
105.0	112.0	21.0	K 105X112X21	47000	126500	2.5	123 g
105.0	113.0	30.0	K 105X113X30	71500	196500	2.5	198 g
110.0	117.0	24.0	K 110X117X24	55500	157500	2.3	146 g
110.0	118.0	30.0	K 110X118X30	77500	218500	2.3	217 g

www.zen.biz

版权所有。
未经版权所有人明确许可，不得擅自复制、摘录、更改该目录册的任何部分。

v.10 / 18



Bearings for your future