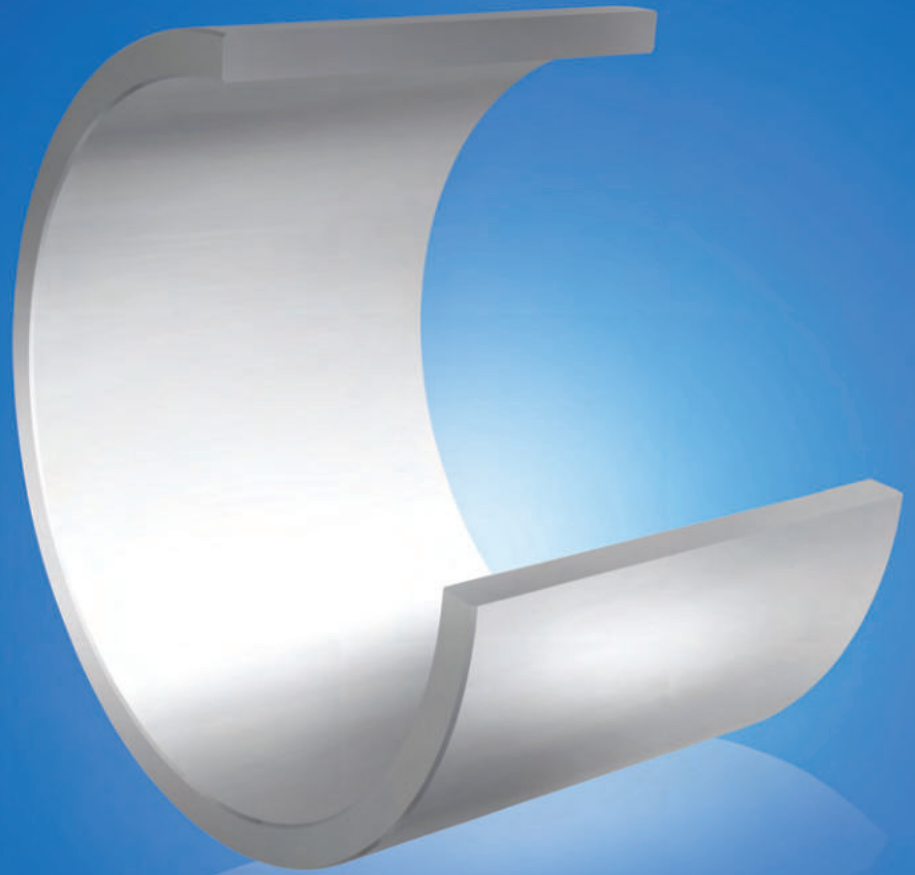


ZON™

BEARINGS FOR YOUR FUTURE



IR轴承内圈





BEARINGS FOR YOUR FUTURE

灿恩轴承品质卓越，在各种标准及非标应用中使用广泛。
无论数量多少，我们的技术部门都能够根据您的要求定制任何规格的非标轴承。

灿恩除了经营一千余种微型轴承（内径1-10mm,包括英制）之外还提供薄壁、推力、标准公制轴承以及其他各种非标轴承。我们能够按照客户的特殊需求，通过一些新型材料例如陶瓷或者特殊钢材来设计轴承以满足工业，医疗，化学或食品加工行业上的各种应用。

如果您在我们的产品目录册中无法找到您的理想型号，请联系我们经验丰富的销售团队。



IR轴承内圈



润滑油



超负荷适用

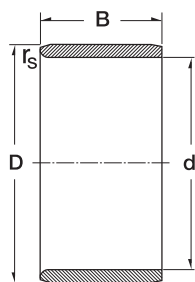


灿恩已获得德国ISO 9001 TUV莱茵认证。

莱茵认证被视作轴承行业的最高检验标准，受到国际认可并得到广大客户的肯定，被视为品质和服务的保证。

www.zen.biz

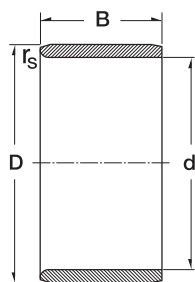
IR轴承内圈



3

Dimension (mm)			Designation/Type	Shaft Diameter (mm)	Mass (g) approx.
d	D	B			
5.0	8.0	12.0	IR 5X8X12	5.0	2,8 g
5.0	8.0	16.0	IR 5X8X16	5.0	3,7 g
6.0	9.0	12.0	IR 6X9X12	6.0	3 g
6.0	9.0	16.0	IR 6X9X16	6.0	4,3 g
7.0	10.0	12.0	IR 7X10X12	7.0	4 g
7.0	10.0	10.5	IR 7X10X10.5	7.0	3,1 g
7.0	10.0	10.5	LR 7X10X10.5	7.0	3,1 g
7.0	10.0	16.0	IR 7X10X16	7.0	4,9 g
8.0	12.0	12.5	IR 8X12X12.5	8.0	6 g
8.0	12.0	10.5	IR 8X12X10.5	8.0	5 g
8.0	12.0	10.5	LR 8X12X10.5	8.0	5 g
9.0	12.0	12.0	IR 9X12X12	9.0	4,4 g
9.0	12.0	16.0	IR 9X12X16	9.0	6 g
10.0	13.0	12.5	IR 10X13X12.5	10.0	5 g
10.0	13.0	12.5	LR 10X13X12.5	10.0	5,2 g
10.0	14.0	13.0	IR 10X14X13	10.0	7,4 g
10.0	14.0	16.0	IR 10X14X16	10.0	9,2 g
10.0	14.0	20.0	IR 10X14X20	10.0	11,5 g
12.0	15.0	12.5	IR 12X15X12.5	12.0	6 g
12.0	16.0	12.0	IR 12X16X12	12.0	8 g
12.0	15.0	12.0	IR 12X15X12	12.0	5,7 g
12.0	15.0	12.5	LR 12X15X12.5	12.0	6,1 g
12.0	15.0	16.0	IR 12X15X16	12.0	7,6 g
12.0	15.0	16.5	IR 12X15X16.5	12.0	8,1 g
12.0	15.0	16.5	LR 12X15X16.5	12.0	8,1 g
12.0	15.0	22.5	IR 12X15X22.5	12.0	10,9 g
12.0	15.0	22.5	LR 12X15X22.5	12.0	10,9 g
12.0	16.0	13.0	IR 12X16X13	12.0	8,5 g
12.0	16.0	16.0	IR 12X16X16	12.0	10,7 g
12.0	16.0	20.0	IR 12X16X20	12.0	13,5 g

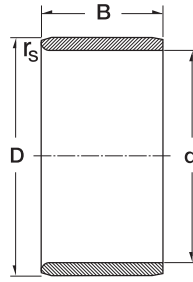
IR轴承内圈



4

Dimension (mm)			Designation/Type	Shaft Diameter (mm)	Mass (g) approx.
d	D	B			
12.0	16.0	22.0	IR 12X16X22	12.0	14,9 g
14.0	17.0	17.0	IR 14X17X17	14.0	9,5 g
15.0	18.0	16.5	IR 15X18X16.5	15.0	10 g
15.0	20.0	23.0	IR 15X20X23	15.0	25 g
15.0	18.0	12.5	LR 15X18X12.5	15.0	7,2 g
15.0	18.0	16.0	IR 15X18X16	15.0	9,4 g
15.0	18.0	16.5	LR 15X18X16.5	15.0	9,8 g
15.0	19.0	16.0	IR 15X19X16	15.0	12,9 g
15.0	19.0	20.0	IR 15X19X20	15.0	16,3 g
15.0	20.0	13.0	IR 15X20X13	15.0	13,5 g
17.0	20.0	16.0	IR 17X20X16	17.0	11 g
17.0	20.0	20.0	IR 17X20X20	17.0	14 g
17.0	21.0	20.0	IR 17X21X20	17.0	19 g
17.0	22.0	13.0	IR 17X22X13	17.0	15 g
17.0	20.0	16.5	IR 17X20X16.5	17.0	11,1 g
17.0	20.0	16.5	LR 17X20X16.5	17.0	11,1 g
17.0	20.0	20.5	IR 17X20X20.5	17.0	13,8 g
17.0	20.0	20.5	LR 17X20X20.5	17.0	13,8 g
17.0	20.0	30.5	IR 17X20X30.5	17.0	20,6 g
17.0	20.0	30.5	LR 17X20X30.5	17.0	20,6 g
17.0	21.0	16.0	IR 17X21X16	17.0	15 g
17.0	22.0	16.0	IR 17X22X16	17.0	18,4 g
17.0	22.0	23.0	IR 17X22X23	17.0	27,1 g
17.0	24.0	20.0	IR 17X24X20	17.0	33,8 g
20.0	24.0	20.0	IR 20X24X20	20.0	21 g
20.0	25.0	12.5	LR 20X25X12.5	20.0	17 g
20.0	25.0	20.5	LR 20X25X20.5	20.0	28 g
20.0	24.0	16.0	IR 20X24X16	20.0	15 g
20.0	25.0	16.5	LR 20X25X16.5	20.0	21,7 g
20.0	25.0	17.0	IR 20X25X17	20.0	25 g

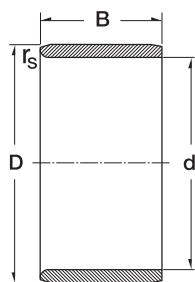
IR轴承内圈



5

Dimension (mm)			Designation/Type	Shaft Diameter (mm)	Mass (g) approx.
d	D	B			
20.0	25.0	20.0	IR 20X25X20	20.0	27,5 g
20.0	25.0	20.5	IR 20X25X20.5	20.0	27,4 g
20.0	25.0	26.5	IR 20X25X26.5	20.0	38 g
20.0	25.0	26.5	LR 20X25X26.5	20.0	38 g
20.0	25.0	30.0	IR 20X25X30	20.0	40,4 g
20.0	25.0	38.5	IR 20X25X38.5	20.0	52,5 g
20.0	25.0	38.5	LR 20X25X38.5	20.0	52,5 g
20.0	28.0	20.0	IR 20X28X20	20.0	45,2 g
22.0	28.0	20.5	IR 22X28X20.5	22.0	36 g
22.0	26.0	16.0	IR 22X26X16	22.0	18,2 g
22.0	26.0	20.0	IR 22X26X20	22.0	23 g
22.0	28.0	17.0	IR 22X28X17	22.0	29,5 g
22.0	28.0	20.0	IR 22X28X20	22.0	35 g
22.0	28.0	20.5	LR 22X28X20.5	22.0	36 g
22.0	28.0	30.0	IR 22X28X30	22.0	54,4 g
25.0	30.0	12.5	IR 25X30X12.5	25.0	20 g
25.0	30.0	20.0	IR 25X30X20	25.0	33 g
25.0	30.0	32.0	IR 25X30X32	25.0	54 g
25.0	29.0	20.0	IR 25X29X20	25.0	25,9 g
25.0	29.0	30.0	IR 25X29X30	25.0	39,3 g
25.0	30.0	12.5	LR 25X30X12.5	25.0	20 g
25.0	30.0	16.5	LR 25X30X16.5	25.0	26,7 g
25.0	30.0	20.5	IR 25X30X20.5	25.0	33,4 g
25.0	30.0	20.5	LR 25X30X20.5	25.0	33,4 g
25.0	30.0	26.5	IR 25X30X26.5	25.0	46 g
25.0	30.0	26.5	LR 25X30X26.5	25.0	46 g
25.0	30.0	30.0	IR 25X30X30	25.0	53 g
25.0	30.0	38.5	IR 25X30X38.5	25.0	64,5 g
25.0	30.0	38.5	LR 25X30X38.5	25.0	64,5 g
25.0	32.0	22.0	IR 25X32X22	25.0	52,5 g

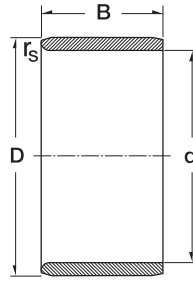
IR轴承内圈



6

Dimension (mm)			Designation/Type	Shaft Diameter (mm)	Mass (g) approx.
d	D	B			
28.0	32.0	17.0	IR 28X32X17	28.0	24,5 g
28.0	32.0	20.0	IR 28X32X20	28.0	28,5 g
28.0	32.0	30.0	IR 28X32X30	28.0	43,5 g
30.0	35.0	16.0	IR 30X35X16	30.0	31 g
30.0	35.0	20.5	IR 30X35X20.5	30.0	39 g
30.0	35.0	30.0	IR 30X35X30	30.0	59 g
30.0	35.0	12.5	LR 30X35X12.5	30.0	23,3 g
30.0	35.0	13.0	IR 30X35X13	30.0	25 g
30.0	35.0	16.5	LR 30X35X16.5	30.0	31,4 g
30.0	35.0	17.0	IR 30X35X17	30.0	36 g
30.0	35.0	20.0	IR 30X35X20	30.0	39 g
30.0	35.0	20.5	LR 30X35X20.5	30.0	39,7 g
30.0	35.0	26.0	IR 30X35X26	30.0	50,4 g
30.0	37.0	18.0	IR 30X37X18	30.0	50 g
30.0	37.0	22.0	IR 30X37X22	30.0	61,6 g
32.0	37.0	20.0	IR 32X37X20	32.0	42 g
32.0	37.0	30.0	IR 32X37X30	32.0	62 g
32.0	40.0	20.0	IR 32X40X20	32.0	68 g
32.0	40.0	36.0	IR 32X40X36	32.0	124 g
33.0	37.0	13.0	IR 33X37X13	33.0	21,9 g
35.0	40.0	17.0	IR 35X40X17	35.0	39 g
35.0	40.0	20.0	IR 35X40X20	35.0	46 g
35.0	40.0	30.0	IR 35X40X30	35.0	68 g
35.0	40.0	12.5	LR 35X40X12.5	35.0	27,2 g
35.0	40.0	16.5	LR 35X40X16.5	35.0	37,4 g
35.0	40.0	20.5	IR 35X40X20.5	35.0	46,1 g
35.0	40.0	20.5	LR 35X40X20.5	35.0	46,1 g
35.0	42.0	36.0	IR 35X42X36	35.0	117 g
35.0	43.0	22.0	IR 35X43X22	35.0	82 g
38.0	43.0	20.0	IR 38X43X20	38.0	48,1 g

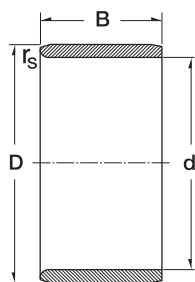
IR轴承内圈



7

Dimension (mm)			Designation/Type	Shaft Diameter (mm)	Mass (g) approx.
d	D	B			
38.0	43.0	30.0	IR 38X43X30	38.0	73,6 g
40.0	45.0	10.0	IR 40X45X10	40.0	26 g
40.0	45.0	20.0	IR 40X45X20	40.0	51 g
40.0	45.0	30.0	IR 40X45X30	40.0	77 g
40.0	45.0	16.5	LR 40X45X16.5	40.0	41,4 g
40.0	45.0	17.0	IR 40X45X17	40.0	42,5 g
40.0	45.0	20.5	IR 40X45X20.5	40.0	51,8 g
40.0	45.0	20.5	LR 40X45X20.5	40.0	51,8 g
40.0	48.0	22.0	IR 40X48X22	40.0	91,6 g
40.0	48.0	40.0	IR 40X48X40	40.0	170 g
40.0	50.0	22.0	IR 40X50X22	40.0	118 g
42.0	47.0	20.0	IR 42X47X20	42.0	52,8 g
42.0	47.0	30.0	IR 42X47X30	42.0	81 g
45.0	50.0	20.0	IR 45X50X20	45.0	57 g
45.0	50.0	35.0	IR 45X50X35	45.0	101 g
45.0	52.0	22.0	IR 45X52X22	45.0	88 g
45.0	50.0	20.5	LR 45X50X20.5	45.0	58,8 g
45.0	50.0	25.0	IR 45X50X25	45.0	70,8 g
45.0	50.0	25.5	IR 45X50X25.5	45.0	75,1 g
45.0	50.0	25.5	LR 45X50X25.5	45.0	75,1 g
45.0	52.0	40.0	IR 45X52X40	45.0	164 g
45.0	55.0	22.0	IR 45X55X22	45.0	129 g
50.0	55.0	20.0	IR 50X55X20	50.0	63 g
50.0	55.0	35.0	IR 50X55X35	50.0	112 g
50.0	58.0	22.0	IR 50X58X22	50.0	115 g
50.0	58.0	40.0	IR 50X58X40	50.0	209 g
50.0	60.0	25.0	IR 50X60X25	50.0	163 g
50.0	60.0	28.0	IR 50X60X28	50.0	183 g
50.0	55.0	20.5	LR 50X55X20.5	50.0	64,1 g
50.0	55.0	25.0	IR 50X55X25	50.0	78 g

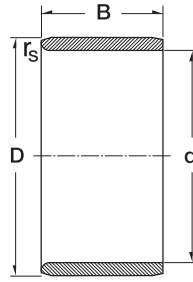
IR轴承内圈



8

Dimension (mm)			Designation/Type	Shaft Diameter (mm)	Mass (g) approx.
d	D	B			
55.0	60.0	35.0	IR 55X60X35	55.0	121 g
55.0	60.0	25.0	IR 55X60X25	55.0	85,5 g
55.0	63.0	25.0	IR 55X63X25	55.0	141 g
55.0	63.0	45.0	IR 55X63X45	55.0	256 g
55.0	65.0	28.0	IR 55X65X28	55.0	198 g
60.0	68.0	45.0	IR 60X68X45	60.0	275 g
60.0	70.0	25.0	IR 60X70X25	60.0	195 g
60.0	70.0	60.0	IR 60X70X60	60.0	463 g
60.0	68.0	25.0	IR 60X68X25	60.0	152 g
60.0	68.0	35.0	IR 60X68X35	60.0	213 g
60.0	70.0	28.0	IR 60X70X28	60.0	215 g
65.0	72.0	45.0	IR 65X72X45	65.0	259 g
65.0	75.0	28.0	IR 65X75X28	65.0	236 g
65.0	72.0	25.0	IR 65X72X25	65.0	414 g
65.0	73.0	25.0	IR 65X73X25	65.0	164 g
65.0	73.0	35.0	IR 65X73X35	65.0	231 g
70.0	80.0	25.0	IR 70X80X25	70.0	224 g
70.0	80.0	54.0	IR 70X80X54	70.0	480 g
70.0	80.0	30.0	IR 70X80X30	70.0	267 g
70.0	80.0	35.0	IR 70X80X35	70.0	312 g
75.0	85.0	25.0	IR 75X85X25	75.0	238 g
75.0	85.0	30.0	IR 75X85X30	75.0	287 g
75.0	85.0	35.0	IR 75X85X35	75.0	336 g
75.0	85.0	54.0	IR 75X85X54	75.0	520 g
80.0	90.0	35.0	IR 80X90X35	80.0	355 g
80.0	90.0	25.0	IR 80X90X25	80.0	253 g
80.0	90.0	30.0	IR 80X90X30	80.0	304 g
80.0	90.0	54.0	IR 80X90X54	80.0	556 g
85.0	95.0	26.0	IR 85X95X26	85.0	277 g
85.0	95.0	36.0	IR 85X95X36	85.0	388 g

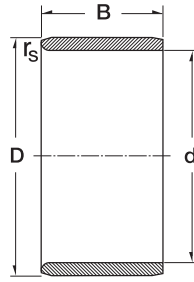
IR轴承内圈



9

Dimension (mm)			Designation/Type	Shaft Diameter (mm)	Mass (g) approx.
d	D	B			
85.0	100.0	35.0	IR 85X100X35	85.0	582 g
85.0	100.0	63.0	IR 85X100X63	85.0	1054 g
90.0	100.0	26.0	IR 90X100X26	90.0	294 g
90.0	100.0	30.0	IR 90X100X30	90.0	340 g
90.0	100.0	36.0	IR 90X100X36	90.0	406 g
90.0	105.0	35.0	IR 90X105X35	90.0	610 g
90.0	105.0	63.0	IR 90X105X63	90.0	1110 g
95.0	105.0	26.0	IR 95X105X26	95.0	313 g
95.0	105.0	36.0	IR 95X105X36	95.0	431 g
95.0	110.0	35.0	IR 95X110X35	95.0	657 g
95.0	110.0	63.0	IR 95X110X63	95.0	1170 g
100.0	110.0	30.0	IR 100X110X30	100.0	350 g
100.0	110.0	40.0	IR 100X110X40	100.0	505 g
100.0	115.0	40.0	IR 100X115X40	100.0	797 g
110.0	120.0	30.0	IR 110X120X30	110.0	409 g
110.0	125.0	40.0	IR 110X125X40	110.0	840 g
120.0	130.0	30.0	IR 120X130X30	120.0	442 g
120.0	135.0	45.0	IR 120X135X45	120.0	1044 g
130.0	145.0	35.0	IR 130X145X35	130.0	855 g
130.0	150.0	50.0	IR 130X150X30	130.0	1690 g
140.0	155.0	35.0	IR 140X155X35	140.0	917 g
140.0	160.0	50.0	IR 140X160X50	140.0	1800 g
150.0	165.0	40.0	IR 150X165X40	150.0	1122 g
160.0	175.0	40.0	IR 160X175X40	160.0	1200 g
170.0	185.0	45.0	IR 170X185X45	170.0	1441 g
180.0	195.0	45.0	IR 180X195X45	180.0	1510 g
190.0	210.0	50.0	IR 190X210X50	190.0	2410 g
200.0	220.0	50.0	IR 200X220X50	200.0	2518 g
220.0	240.0	50.0	IR 220X240X50	220.0	2753 g
240.0	265.0	60.0	IR 240X265X60	240.0	4600 g

IR轴承内圈



10

Dimension (mm)			Designation/Type	Shaft Diameter (mm)	Mass (g) approx.
d	D	B			
260.0	285.0	60.0	IR 260X285X60	260.0	4980 g
280.0	305.0	69.0	IR 280X305X69	280.0	6100 g
300.0	330.0	80.0	IR 300X330X80	300.0	9200 g
320.0	350.0	80.0	IR 320X350X80	320.0	9800 g
340.0	370.0	80.0	IR 340X370X80	340.0	10200 g
360.0	390.0	80.0	IR 360X390X80	360.0	10900 g
380.0	415.0	100.0	IR 380X415X100	380.0	16700 g

www.zen.biz

版权所有。
未经版权所有人明确许可，不得擅自复制、摘录、更改该目录册的任何部分。

v.10 / 18



Bearings for your future