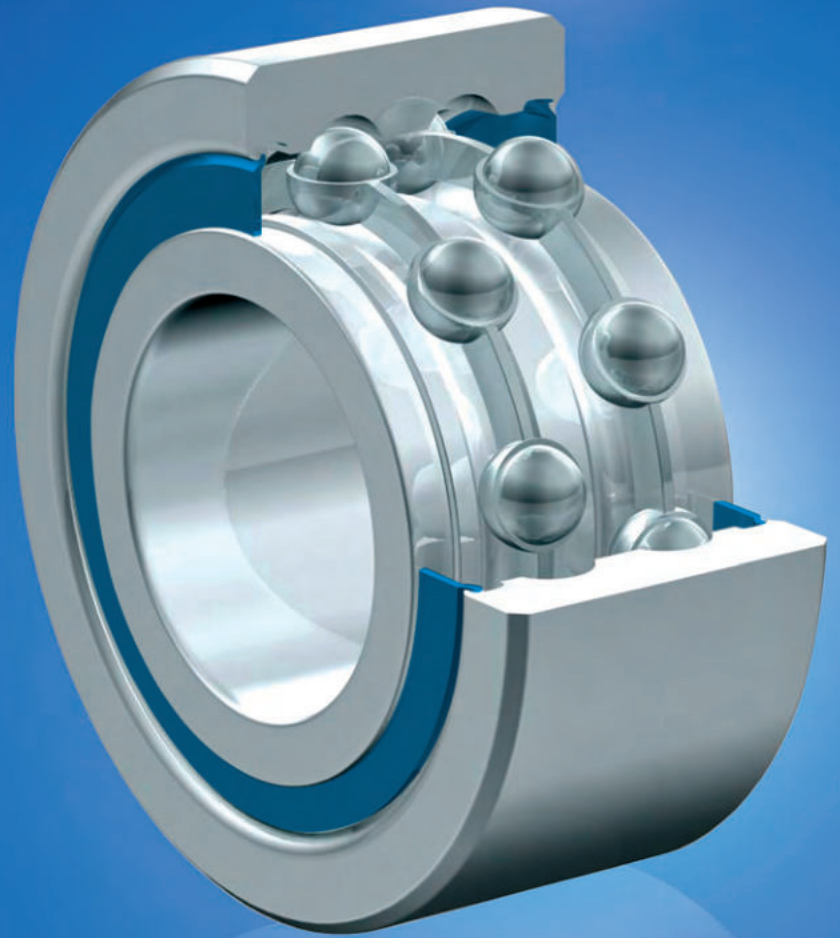


ZON™

BEARINGS FOR YOUR FUTURE



双列轴承





BEARINGS FOR YOUR FUTURE

灿恩轴承品质卓越，在各种标准及非标应用中使用广泛。
无论数量多少，我们的技术部门都能够根据您的要求定制任何规格的非标轴承。

灿恩除了经营一千余种微型轴承（内径1-10mm,包括英制）之外还提供薄壁、推力、标准公制轴承以及其他各种非标轴承。我们能够按照客户的特殊需求，通过一些新型材料例如陶瓷或者特殊钢材来设计轴承以满足工业，医疗，化学或食品加工行业上的各种应用。

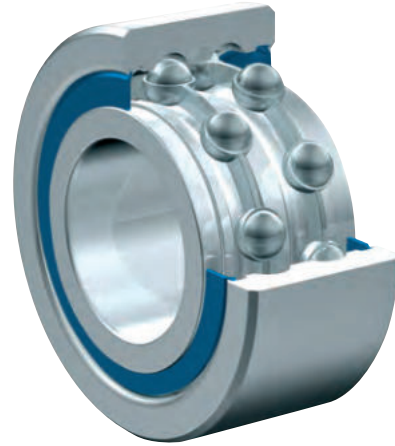
如果您在我们的产品目录册中无法找到您的理想型号，请联系我们经验丰富的销售团队。



灿恩已获得德国ISO 9001 TUV莱茵认证。

莱茵认证被视作轴承行业的最高检验标准，受到国际认可并得到广大客户的肯定，被视为品质和服务的保证。

www.zen.biz



双列轴承



润滑油



润滑脂



户外耐久性



超负荷适用

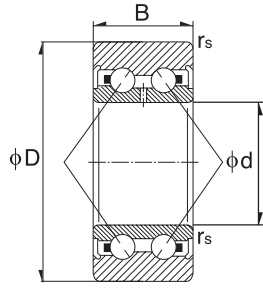


橡胶密封圈（可选）



金属防尘盖（可选）

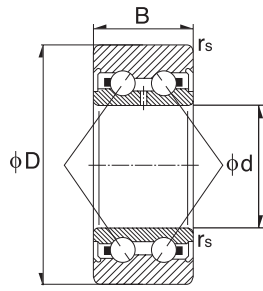
双列轴承



3

| Dimension (mm) | | | Designation/Type | | | | * Load Rating (only 100 Cr6) | | * Limiting Speed x1000rpm (open) | | Weight (g) approx. |
|----------------|-------|------|------------------|-----------|--------------|-----------|------------------------------|------------|----------------------------------|------|--------------------|
| d | D | B | Open | | 2RS | | C, dyn. N | C, stat. N | Grease | Oil | |
| | | | Chrome Steel | Stainless | Chrome Steel | Stainless | | | | | |
| 10.0 | 30.0 | 14.0 | 3200 | S3200 | 3200-2RS | S3200-2RS | 7600 | 5850 | 16.0 | 20.0 | 50 g |
| 12.0 | 32.0 | 15.9 | 3201 | S3201 | 3201-2RS | S3201-2RS | 8750 | 6500 | 15.0 | 19.0 | 60 g |
| 15.0 | 35.0 | 15.9 | 3202 | S3202 | 3202-2RS | S3202-2RS | 11100 | 9100 | 13.0 | 17.0 | 70 g |
| 17.0 | 40.0 | 17.5 | 3203 | S3203 | 3203-2RS | S3203-2RS | 14400 | 8650 | 10.0 | 15.0 | 103 g |
| 20.0 | 47.0 | 20.6 | 3204 | S3204 | 3204-2RS | S3204-2RS | 19300 | 12000 | 9.0 | 13.0 | 168 g |
| 25.0 | 52.0 | 20.6 | 3205 | S3205 | 3205-2RS | S3205-2RS | 20900 | 14100 | 8.0 | 11.0 | 194 g |
| 30.0 | 62.0 | 23.8 | 3206 | S3206 | 3206-2RS | S3206-2RS | 29100 | 20100 | 7.1 | 9.0 | 316 g |
| 35.0 | 72.0 | 27.0 | 3207 | S3207 | 3207-2RS | S3207-2RS | 38400 | 27400 | 5.6 | 7.1 | 484 g |
| 40.0 | 80.0 | 30.2 | 3208 | S3208 | 3208-2RS | S3208-2RS | 47400 | 34600 | 5.0 | 6.3 | 654 g |
| 45.0 | 85.0 | 30.2 | 3209 | S3209 | 3209-2RS | S3209-2RS | 47500 | 35400 | 4.5 | 5.4 | 709 g |
| 50.0 | 90.0 | 30.2 | 3210 | S3210 | 3210-2RS | S3210-2RS | 50700 | 40200 | 4.0 | 4.6 | 764 g |
| 17.0 | 47.0 | 22.2 | 3303 | S3303 | 3303-2RS | S3303-2RS | 20900 | 11900 | 9.5 | 14.0 | 190 g |
| 20.0 | 52.0 | 22.2 | 3304 | S3304 | 3304-2RS | S3304-2RS | 23100 | 14500 | 8.5 | 12.0 | 230 g |
| 25.0 | 62.0 | 25.4 | 3305 | S3305 | 3305-2RS | S3305-2RS | 29500 | 19100 | 7.5 | 10.0 | 369 g |
| 30.0 | 72.0 | 30.2 | 3306 | S3306 | 3306-2RS | S3306-2RS | 41000 | 27400 | 6.2 | 7.9 | 585 g |
| 35.0 | 80.0 | 34.9 | 3307 | S3307 | 3307-2RS | S3307-2RS | 51200 | 33200 | 5.1 | 6.5 | 816 g |
| 40.0 | 90.0 | 36.5 | 3308 | S3308 | 3308-2RS | S3308-2RS | 61900 | 43400 | 4.7 | 5.8 | 1070 g |
| 45.0 | 100.0 | 38.7 | 3309 | S3309 | 3309-2RS | S3309-2RS | 89000 | 79300 | 4.5 | 6.0 | 1420 g |
| 50.0 | 110.0 | 44.4 | 3310 | S3310 | 3310-2RS | S3310-2RS | 107000 | 96300 | 4.0 | 5.3 | 1930 g |
| 17.0 | 40.0 | 17.5 | 5203 | S5203 | 5203-2RS | S5203-2RS | 14600 | 9050 | 11.0 | 16.0 | 96 g |
| 20.0 | 47.0 | 20.0 | 5204 | S5204 | 5204-2RS | S5204-2RS | 19600 | 12400 | 10.0 | 15.0 | 160 g |
| 25.0 | 52.0 | 20.6 | 5205 | S5205 | 5205-2RS | S5205-2RS | 21300 | 14700 | 8.5 | 11.0 | 180 g |
| 30.0 | 62.0 | 23.8 | 5206 | S5206 | 5206-2RS | S5206-2RS | 25600 | 21100 | 7.1 | 9.5 | 290 g |

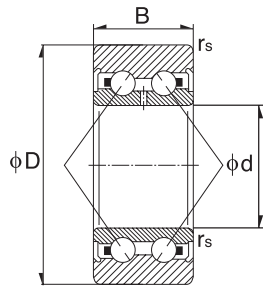
双列轴承



4

| Dimension (mm) | | | Designation/Type | | | | * Load Rating (only 100 Cr6) | | * Limiting Speed x1000rpm (open) | | Weight (g) approx. |
|----------------|-------|------|------------------|-----------|--------------|-----------|------------------------------|------------|----------------------------------|------|--------------------|
| d | D | B | Open | | 2RS | | C, dyn. N | C, stat. N | Grease | Oil | |
| | | | Chrome Steel | Stainless | Chrome Steel | Stainless | | | | | |
| 35.0 | 72.0 | 27.0 | 5207 | S5207 | 5207-2RS | S5207-2RS | 39000 | 28700 | 6.3 | 8.0 | 440 g |
| 40.0 | 80.0 | 30.2 | 5208 | S5208 | 5208-2RS | S5208-2RS | 44000 | 33500 | 5.6 | 7.5 | 580 g |
| 45.0 | 85.0 | 30.2 | 5209 | S5209 | 5209-2RS | S5209-2RS | 49500 | 38000 | 5.0 | 6.7 | 630 g |
| 50.0 | 90.0 | 30.2 | 5210 | S5210 | 5210-2RS | S5210-2RS | 53000 | 43500 | 4.8 | 6.3 | 660 g |
| 17.0 | 47.0 | 22.2 | 5303 | S5303 | 5303-2RS | S5303-2RS | 21000 | 12600 | 10.0 | 14.0 | 180 g |
| 20.0 | 52.0 | 22.2 | 5304 | S5304 | 5304-2RS | S5304-2RS | 24600 | 16000 | 9.0 | 12.0 | 220 g |
| 25.0 | 62.0 | 25.4 | 5305 | S5305 | 5305-2RS | S5305-2RS | 32500 | 20700 | 7.5 | 10.0 | 350 g |
| 30.0 | 72.0 | 30.2 | 5306 | S5306 | 5306-2RS | S5306-2RS | 40500 | 28100 | 6.3 | 8.5 | 530 g |
| 35.0 | 80.0 | 34.9 | 5307 | S5307 | 5307-2RS | S5307-2RS | 51000 | 36000 | 5.6 | 7.5 | 730 g |
| 40.0 | 90.0 | 36.5 | 5308 | S5308 | 5308-2RS | S5308-2RS | 56500 | 41000 | 5.3 | 6.7 | 950 g |
| 45.0 | 100.0 | 38.7 | 5309 | S5309 | 5309-2RS | S5309-2RS | 68500 | 51000 | 4.5 | 6.0 | 1400 g |
| 50.0 | 110.0 | 44.4 | 5310 | S5310 | 5310-2RS | S5310-2RS | 81800 | 62200 | 3.6 | 5.3 | 1950 g |

双列轴承



5

| Dimension (mm) | | | Designation/Type | | | * Load Rating | | * Limiting Speed x1000rpm | Weight (g) approx. |
|----------------|--------|--------|------------------|---------|----------|---------------|------------|------------------------------|--------------------------|
| d | D | B | Open | 2Z | 2RS | C, dyn. N | C, stat. N | | |
| 10.000 | 19.000 | 7.000 | 3800 | 3800-2Z | 3800-2RS | 2120 | 1400 | 18.0 | 8 g |
| 12.000 | 21.000 | 7.000 | 3801 | 3801-2Z | 3801-2RS | 2190 | 1550 | 16.0 | 8 g |
| 15.000 | 24.000 | 7.000 | 3802 | 3802-2Z | 3802-2RS | 2430 | 1960 | 16.0 | 9 g |
| 17.000 | 26.000 | 7.000 | 3803 | 3803-2Z | 3803-2RS | 2480 | 2080 | 14.0 | 15 g |
| 20.000 | 32.000 | 10.000 | 3804 | 3804-2Z | 3804-2RS | 5800 | 4850 | 10.0 | 20 g |
| 25.000 | 37.000 | 10.000 | 3805 | 3805-2Z | 3805-2RS | 6000 | 5600 | 8.5 | 25 g |
| 30.000 | 42.000 | 10.000 | 3806 | 3806-2Z | 3806-2RS | 6300 | 6100 | 7.0 | 30 g |
| 35.000 | 47.000 | 10.000 | 3807 | 3807-2Z | 3807-2RS | 6700 | 7000 | 6.0 | 37 g |
| 40.000 | 52.000 | 10.000 | 3808 | 3808-2Z | 3808-2RS | 7000 | 7800 | 5.3 | 40 g |

www.zen.biz

版权所有。
未经版权所有人明确许可，不得擅自复制、摘录、更改该目录册的任何部分。

v.10 / 18



Bearings for your future