

ZON™

BEARINGS FOR YOUR FUTURE



NK Nadellager / NK Needle Roller



TÜV Rheinland®
CERT
Certified ISO 2008
Certified
Management System
according to ISO 9001:2008



BEARINGS FOR YOUR FUTURE

Zen Ball Bearings are manufactured to the highest quality for standard and non-standard applications. Our technical department can modify any non-standard bearings to your specific requirements, regardless of quantity.

Apart from our extensive miniature ball bearing range of more than 1000 different types, ranging from 1-10 mm bore (Including inch dimensions), our range also includes Thin section, Three part thrust, Popular metric and any kind of non standard bearing. We are able to design bearings according to your requirements using new materials like ceramic or special steels for applications in Industry, Medicine, Chemistry and Food Processing.

Our technical department can modify any non-standard bearings to your specific requirements, even for small quantities.

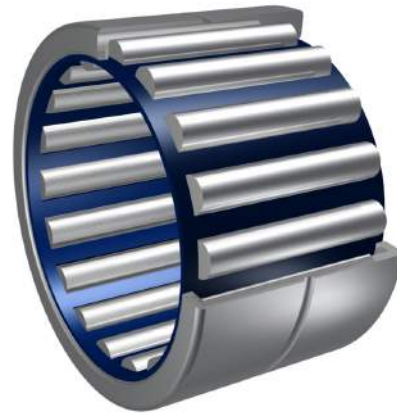
For any items not listed in our catalogue, please contact our experienced sales team.



Zen Ball Bearings Shanghai has been awarded the German ISO TUV Rheinland certification for inspection of ZEN products.

This certification is the highest standard a business in our industry can achieve.

It is internationally recognised as a guarantee of quality, customer focus and continual improvement.



NK Nadellager **NK Needle Roller**



Ölschmierung
Oil lubrication



Fettschmierung
Grease lubrication



Geeignet für hohe drehzahlen
Suitable for high speed applications

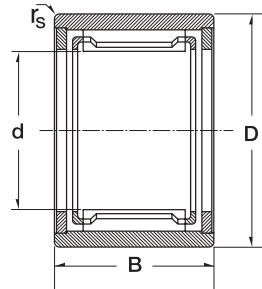
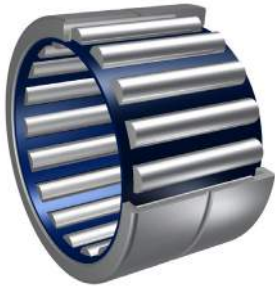


Geeignet für hohe tragzahlen
Suitable for heavy load rating



Gummidichtscheiben verfügbar
Rubber seal option available

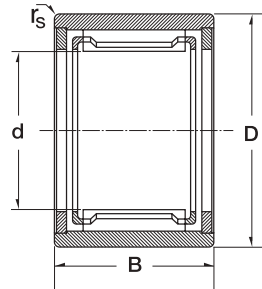
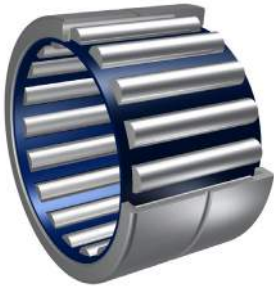
NK Nadellager / NK Needle Roller



3

Dimension (mm)				Designation/Type	Shaft Diameter mm	*Basic Load Rating KN		*Limiting Speed x1000rpm		Mass (g) approx.
d	D	B	r _s			C	Co	Grease	Oil	
5.0	10.0	10.0	0.15	NK 5/10B.TN	5	2.35	1.92	24.0	39.0	3 g
5.0	10.0	12.0	0.15	NK 5/12TN	5	3	2.65	24.0	39.0	4 g
6.0	12.0	10.0	0.15	NK 6/10	6	2.6	2.28	22.0	36.0	5 g
6.0	12.0	12.0	0.15	NK 6/12TN	6	2.9	2.8	22.0	36.0	6 g
7.0	14.0	10.0	0.3	NK 7/10TN	7	2.65	2.5	20.0	34.0	7 g
7.0	14.0	12.0	0.3	NK 7/12TN	7	3.25	3.25	20.0	34.0	8 g
8.0	15.0	12.0	0.3	NK 8/12	8	3.95	4.1	19.0	32.0	8 g
8.0	15.0	16.0	0.3	NK 8/16	8	5.1	5.8	19.0	32.0	12 g
9.0	16.0	12.0	0.3	NK 9/12	9	4.05	4.75	18.0	30.0	10 g
9.0	16.0	16.0	0.3	NK 9/16	9	5.9	7.1	18.0	30.0	13 g
10.0	17.0	12.0	0.3	NK 10/12	10	4.75	5.5	17.0	28.0	10 g
10.0	17.0	16.0	0.3	NK 10/16	10	5.6	7.35	17.0	28.0	13 g
12.0	19.0	12.0	0.3	NK 12/12	12	5.7	6.55	16.0	26.0	12 g
12.0	19.0	16.0	0.3	NK 12/16	12	6.4	9.15	16.0	26.0	16 g
14.0	22.0	13.0	0.3	RNA 4900	14	8.5	9.2	15.0	25.0	16 g
14.0	22.0	16.0	0.3	NK 14/16	14	10.1	11.5	15.0	25.0	21 g
14.0	22.0	20.0	0.3	NK 14/20	14	12.8	15.6	15.0	25.0	25 g
15.0	23.0	16.0	0.3	NK 15/16	15	10.7	12.7	14.4	24.0	21 g
15.0	23.0	20.0	0.3	NK 15/20	15	13.6	17.2	14.4	24.0	27 g
16.0	24.0	13.0	0.3	RNA 4901	16	9.4	10.9	14.0	23.0	17 g
16.0	24.0	16.0	0.3	NK 16/16	16	11.3	13.9	14.0	23.0	22 g
16.0	24.0	20.0	0.3	NK 16/20	16	14.4	18.8	14.0	23.0	28 g
16.0	24.0	22.0	0.3	RNA 6901	16	14.3	20	14.0	23.0	31 g
17.0	25.0	16.0	0.3	NK 17/16	17	11.9	15	14.0	23.0	24 g
17.0	25.0	20.0	0.3	NK 17/20	17	13.7	19	14.0	23.0	30 g
18.0	26.0	16.0	0.3	NK 18/16	18	12.5	16.2	14.0	22.0	25 g
18.0	26.0	20.0	0.3	NK 18/20	18	14.3	20.4	14.0	22.0	31 g
19.0	27.0	16.0	0.3	NK 19/16	19	13	17.4	14.0	22.0	26 g
19.0	27.0	20.0	0.3	NK 19/20	19	15	22	14.0	22.0	32 g
20.0	28.0	13.0	0.3	RNA 4902	20	10.6	13.6	13.0	20.0	22 g

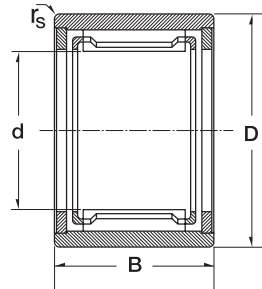
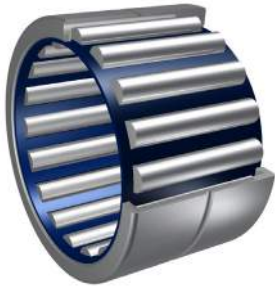
NK Nadellager / NK Needle Roller



4

Dimension (mm)				Designation/Type GD	Shaft Diameter mm	*Basic Load Rating KN		*Limiting Speed x1000rpm		Mass (g) approx.
d	D	B	r _s			C	Co	Grease	Oil	
20.0	28.0	16.0	0.3	NK 20/16	20	13	17.5	13.0	20.0	27 g
20.0	28.0	20.0	0.3	NK 20/20	20	16.4	20.8	13.0	20.0	34 g
20.0	28.0	23.0	0.3	RNA 6902	20	17.3	25.5	13.0	20.0	40 g
20.0	32.0	20.0	0.6	NKS 20	20	23	25	13.0	20.0	49 g
21.0	29.0	16.0	0.3	NK 21/16	21	13.5	18.7	13.0	20.0	28 g
21.0	29.0	20.0	0.3	NK 21/20	21	17.1	25.5	13.0	20.0	35 g
22.0	30.0	13.0	0.3	RNA 4903	22	11	14.6	12.0	19.0	22 g
22.0	30.0	16.0	0.3	NK 22/16	22	14	19.9	12.0	19.0	30 g
22.0	30.0	20.0	0.3	NK 22/20	22	16	25	12.0	19.0	37 g
22.0	30.0	23.0	0.3	RNA 6903	22	18	29	12.0	19.0	42 g
22.0	35.0	20.0	0.6	NKS 22	22	20.8	25.5	12.0	19.0	61 g
24.0	32.0	16.0	0.3	NK 24/16	24	15	22.3	10.0	17.0	32 g
24.0	32.0	20.0	0.3	NK 24/20	24	17.3	28.5	10.0	17.0	40 g
24.0	37.0	20.0	0.6	NKS 24	24	26	31	10.0	17.0	65 g
25.0	33.0	16.0	0.3	NK 25/16	25	14.9	22.4	10.0	17.0	33 g
25.0	33.0	20.0	0.3	NK 25/20	25	17	28.5	10.0	17.0	42 g
25.0	37.0	17.0	0.3	RNA 4904	25	19	23.6	10.0	17.0	52 g
25.0	37.0	30.0	0.3	RNA 6904	25	33.5	49	10.0	17.0	100 g
25.0	38.0	20.0	0.6	NKS 25	25	27.5	33.5	10.0	17.0	68 g
26.0	34.0	16.0	0.3	NK 26/16	26	14.6	23.6	9.5	16.0	34 g
26.0	34.0	20.0	0.3	NK 26/20	26	17.6	30	9.5	16.0	42 g
28.0	37.0	20.0	0.3	NK 28/20	28	20	32	9.0	15.0	52 g
28.0	37.0	30.0	0.3	NK 28/30ASR1	28	26.5	52	9.0	15.0	82 g
28.0	39.0	17.0	0.3	RNA 49/22	28	20.8	27.5	9.0	15.0	50 g
28.0	39.0	30.0	0.3	RNA 69/22	28	36	51	9.0	15.0	98 g
28.0	42.0	20.0	0.3	NKS 28	28	28.5	36.5	9.0	15.0	84 g
29.0	38.0	20.0	0.3	NK 29/20	29	21.9	34	8.5	14.0	54 g
29.0	38.0	30.0	0.3	NK 29/30	29	32.5	57	8.5	14.0	84 g
30.0	40.0	20.0	0.3	NK 30/20	30	22.6	36	8.5	14.0	65 g
30.0	40.0	30.0	0.3	NK 30/30	30	33.5	60	8.5	14.0	98 g

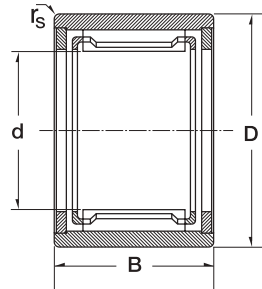
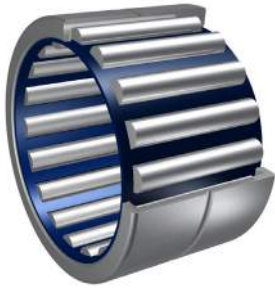
NK Nadellager / NK Needle Roller



5

Dimension (mm)				Designation/Type	Shaft Diameter mm	*Basic Load Rating KN		*Limiting Speed x1000rpm		Mass (g) approx.
d	D	B	r _s			C	Co	Grease	Oil	
30.0	42.0	17.0	0.3	RNA 4905	30	23.6	31.5	8.5	14.0	61 g
30.0	42.0	30.0	0.3	RNA 6905	30	39	59	8.5	14.0	112 g
30.0	45.0	22.0	0.6	NKS 30	30	32	40	8.5	14.0	104 g
32.0	42.0	20.0	0.3	NK 32/20	32	23.1	37.5	8.0	13.0	68 g
32.0	42.0	30.0	0.3	NK 32/30	32	32.5	62	8.0	13.0	102 g
32.0	45.0	17.0	0.3	RNA 49/28	32	22.4	31.5	8.0	13.0	73 g
32.0	45.0	30.0	0.3	RNA 69/28	32	40	60	8.0	13.0	135 g
32.0	47.0	22.0	0.6	NKS 32	32	33.5	43.5	8.0	13.0	110 g
35.0	45.0	20.0	0.3	NK 35/20	35	24.3	41.5	7.5	12.0	74 g
35.0	45.0	30.0	0.3	NK 35/30	35	34	68	7.5	12.0	122 g
35.0	47.0	17.0	0.3	RNA 4906	35	23.2	33.5	7.5	12.0	69 g
35.0	47.0	30.0	0.3	RNA 6906	35	39	65.5	7.5	12.0	126 g
35.0	50.0	22.0	0.6	NKS 35	35	34	47.5	7.5	12.0	118 g
37.0	47.0	20.0	0.3	NK 37/20	37	23.6	43	7.0	11.0	77 g
37.0	47.0	30.0	0.3	NK 37/30	37	34.5	71	7.0	11.0	113 g
37.0	52.0	22.0	0.6	NKS 37	37	35.5	50	7.0	11.0	123 g
38.0	48.0	20.0	0.3	NK 38/20B.ASR1	38	20.8	41.5	7.0	11.0	79 g
38.0	48.0	30.0	0.3	NK 38/30ASR1	38	30.5	68	7.0	11.0	116 g
40.0	50.0	20.0	0.3	NK 40/20	40	25	47	6.7	10.0	83 g
40.0	50.0	30.0	0.3	NK 40/30	40	36.5	76.5	6.7	10.0	125 g
40.0	52.0	20.0	0.6	RNA 49/32	40	28.5	46.5	6.7	10.0	89 g
40.0	52.0	36.0	0.6	RNA 69/32	40	43	78	6.7	10.0	162 g
40.0	55.0	22.0	0.6	NKS 40	40	36.5	54	6.7	10.0	129 g
42.0	52.0	20.0	0.3	NK 42/20	42	26.5	49	6.7	10.0	86 g
42.0	52.0	30.0	0.3	NK 42/30	42	37.5	80	6.7	10.0	130 g
42.0	55.0	20.0	0.6	RNA 4907	42	29	49	6.7	10.0	107 g
42.0	55.0	36.0	0.6	RNA 6907	42	44	83	6.7	10.0	193 g
43.0	53.0	20.0	0.3	NK 43/20	43	26	51	6.3	9.5	86 g
43.0	53.0	30.0	0.3	NK 43/30	43	38	83	6.3	9.5	133 g
43.0	58.0	22.0	0.6	NKS 43	43	37.5	57	6.3	9.5	139 g

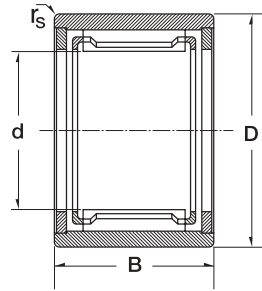
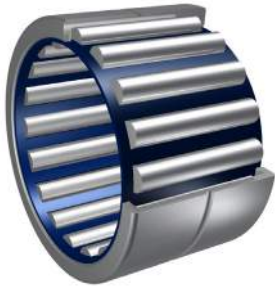
NK Nadellager / NK Needle Roller



6

Dimension (mm)				Designation/Type	Shaft Diameter mm	*Basic Load Rating KN		*Limiting Speed x1000rpm		Mass (g) approx.
d	D	B	r _s			C	Co	Grease	Oil	
45.0	55.0	20.0	0.3	NK 45/20	45	26.5	53	6.3	9.5	91 g
45.0	55.0	30.0	0.3	NK 45/30	45	39	86	6.3	9.5	139 g
45.0	60.0	22.0	0.6	NKS 45	45	40.5	60	6.0	9.0	145 g
47.0	57.0	20.0	0.3	NK 47/20	47	27	55	6.0	9.0	94 g
47.0	57.0	30.0	0.3	NK 47/30	47	39	90	6.0	9.0	142 g
48.0	62.0	22.0	0.6	RNA 4908	48	40	64	5.6	8.5	140 g
48.0	62.0	40.0	0.6	RNA 6908	48	64	116	5.6	8.5	256 g
50.0	62.0	25.0	0.6	NK 50/25	50	38	74	5.6	8.5	158 g
50.0	62.0	35.0	0.6	NK 50/35	50	50	106	5.6	8.5	221 g
50.0	65.0	22.0	1.0	NKS 50	50	42.5	67	5.6	8.5	157 g
52.0	68.0	22.0	0.6	RNA 4909	52	41.5	69.5	5.3	8.0	182 g
52.0	68.0	40.0	0.6	RNA 6909	52	65.5	125	5.3	8.0	338 g
55.0	68.0	25.0	0.6	NK 55/25	55	40	82	5.0	7.5	180 g
55.0	68.0	35.0	0.6	NK 55/35	55	53	118	5.0	7.5	250 g
55.0	72.0	22.0	1.0	NKS 55	55	42.5	72	5.0	7.5	221 g
58.0	72.0	22.0	0.6	RNA 4910	58	43	76.5	4.8	7.0	163 g
58.0	72.0	40.0	0.6	RNA 6910	58	67	132	4.8	7.0	310 g
60.0	72.0	25.0	0.6	NK 60/25	60	40	88	4.8	7.0	185 g
60.0	72.0	35.0	0.6	NK 60/35	60	55	130	4.8	7.0	258 g
60.0	80.0	28.0	1.1	NKS 60	60	60	98	4.8	7.0	335 g
63.0	80.0	25.0	1.0	RNA 4911	63	58	100	4.5	6.7	255 g
63.0	80.0	45.0	1.0	RNA 6911	63	83	160	4.5	6.7	470 g
65.0	78.0	25.0	0.6	NK 65/25	65	43	91.5	4.5	6.3	221 g
65.0	78.0	35.0	0.6	NK 65/35	65	60	137	4.3	6.3	310 g
65.0	85.0	28.0	1.1	NKS 65	65	64	108	4.3	6.0	365 g
68.0	82.0	25.0	0.6	NK 68/25	68	43.5	89	4.0	6.0	241 g
68.0	82.0	35.0	0.6	NK 68/35	68	62	139	4.0	6.0	338 g
68.0	85.0	25.0	1.0	RNA 4912	68	60	108	4.0	6.0	275 g
68.0	85.0	45.0	1.0	RNA 6912	68	71	176	4.0	6.0	488 g
70.0	85.0	25.0	0.6	NK 70/25A SR1	70	41.5	90	4.0	6.0	260 g

NK Nadellager / NK Needle Roller



7

Dimension (mm)				Designation/Type GD	Shaft Diameter mm	*Basic Load Rating KN		*Limiting Speed x1000rpm		Mass (g) approx.
d	D	B	r _s			C	Co	Grease	Oil	
70.0	85.0	35.0	0.6	NK 70/35A SR1	70	58.5	140	4.0	6.0	370 g
70.0	90.0	28.0	1.1	NKS 70	70	68	113	4.0	6.0	380 g
72.0	90.0	25.0	1.0	RNA 4913	72	61	112	4.0	6.0	312 g
72.0	90.0	45.0	1.0	RNA 6913	72	95	196	4.0	6.0	580 g
73.0	90.0	25.0	0.6	NK 73/25	73	53	100	3.8	5.6	302 g
73.0	90.0	35.0	0.6	NK 73/35	73	75	156	3.8	5.6	428 g

www.zen.biz

Alle Rechte vorbehalten, kein Teil des Katalogs darf in irgendeiner Form (Druck, Fotokopie, Mikrofilm oder in einem anderen Verfahren) ohne Genehmigung reproduziert oder unter Verwendung elektronischer Systeme verarbeitet, vervielfältigt oder verbreitet werden.

Copyright reserved. No part of the catalogue is to be copied, extracted or modified without explicit permission from the copyright holder.

v.10 / 12



Bearings for your future