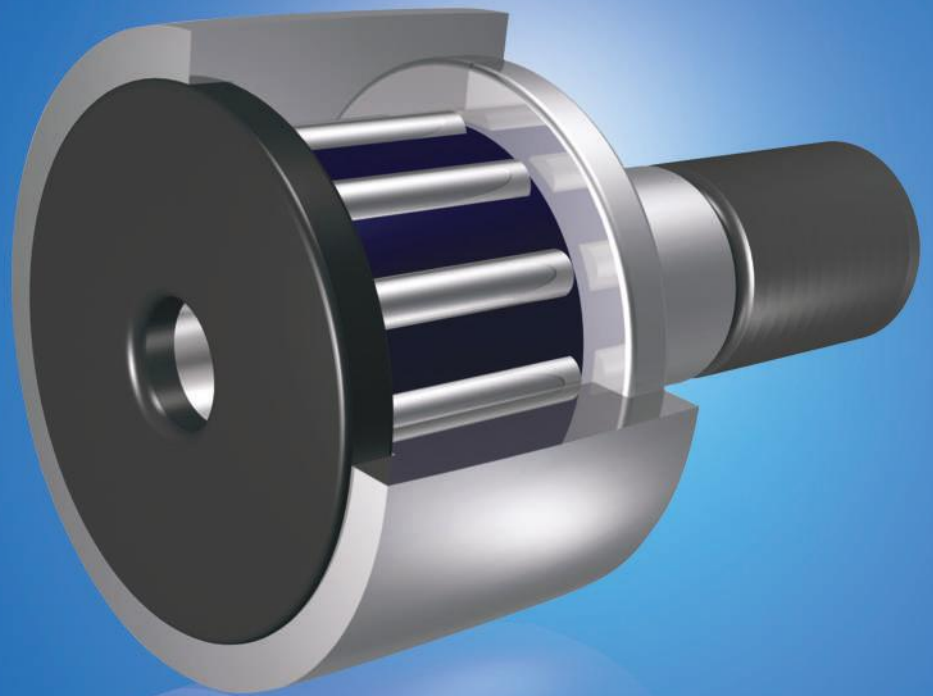


ZON™

BEARINGS FOR YOUR FUTURE



KR曲线滚轮轴承



TÜV Rheinland®
CERT
Certified ISO 2008
Certified
Management System
according to ISO 9001:2008



BEARINGS FOR YOUR FUTURE

灿恩球轴承在标准和非标应用中最佳品质的产品。

灿恩除了经营一千余种微型轴承（内径1-10mm,包括英制）之外还提供薄壁、推力、标准公制轴承以及其他各种非标轴承。我们能够按照客户的特殊需求，通过一些新型材料例如陶瓷或者特殊钢材来设计轴承以满足工业，医疗，化学或食品加工行业上的各种应用。

无论数量多少，我们的技术部门都能根据客户要求定制各种非标轴承。

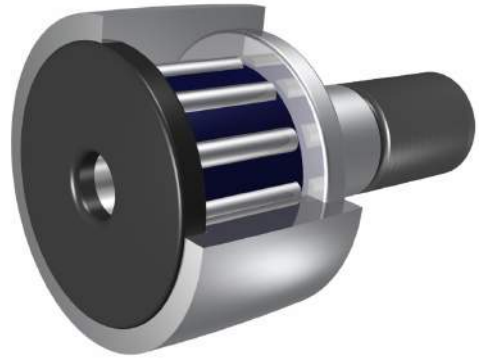
如果您在我们的产品目录册中无法找到您的理想型号，请联系我们经验丰富的销售团队。



灿恩已获得德国ISO 9001 TUV莱茵认证。

该技术认证被认为是轴承行业的最高检验标准。该认证受国际认可，被视为质量的保证，客户的首选以及品质服务的持续进步。

www.zen.biz



KR曲线滚轮轴承



润滑油



润滑脂

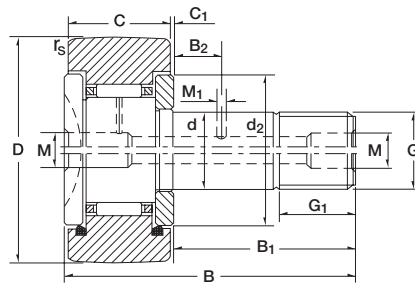
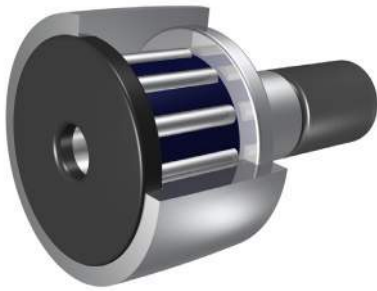


高速运转适用



超负荷适用

KR曲线滚轮轴承

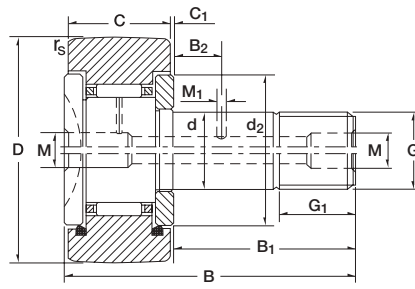
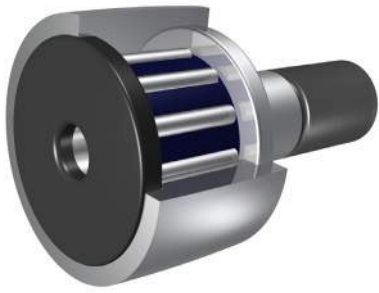


3

| Dimensions (mm) | | | | Outside Diameter (mm) | Designation /Type | Weight (g) approx. | With Eccentric Collar | Weight (g) approx. | Dimensions (mm) | | | | |
|-----------------|------|------|------|-----------------------|-------------------|--------------------|-----------------------|--------------------|-----------------|---------------------|----|---------|----|
| d | D | B | C | | | | | | rs min | B1 | B2 | G | G1 |
| 6.0 | 16.0 | 28.0 | 11.0 | 16.0 | KR 16 | 18 g | KRE 16 | 20 g | 0.15 | 16 | - | M6 | 8 |
| 6.0 | 16.0 | 28.0 | 11.0 | 16.0 | KR 16PP | 18 g | KRE 16PP | 20 g | 0.15 | 16 | - | M6 | 8 |
| 6.0 | 16.0 | 28.0 | 11.0 | 16.0 | KRV 16 | 20 g | KRV 16 | 22 g | 0.15 | 16 | - | M6 | 8 |
| 6.0 | 16.0 | 28.0 | 11.0 | 16.0 | KRV 16PP | 20 g | KRVE 16PP | 22 g | 0.15 | 16 | - | M6 | 8 |
| 8.0 | 19.0 | 32.0 | 11.0 | 19.0 | KR 19 | 28 g | KRE 19 | 31 g | 0.15 | 20 | - | M8 | 10 |
| 8.0 | 19.0 | 32.0 | 11.0 | 19.0 | KR 19PP | 28 g | KRE 19PP | 31 g | 0.15 | 20 | - | M8 | 10 |
| 8.0 | 19.0 | 32.0 | 11.0 | 19.0 | KRV 19 | 32 g | KRVE 19 | 35 g | 0.15 | 20 | - | M8 | 10 |
| 8.0 | 19.0 | 32.0 | 11.0 | 19.0 | KRV 19PP | 32 g | KRVE 19PP | 35 g | 0.15 | 20 | - | M8 | 10 |
| 10.0 | 22.0 | 36.0 | 12.0 | 22.0 | KR 22 | 44 g | KRE 22 | 48 g | 0.3 | 23 | - | M10X1 | 12 |
| 10.0 | 22.0 | 36.0 | 12.0 | 22.0 | KR 22PP | 44 g | KRE 22PP | 48 g | 0.3 | 23 | - | M10X1 | 12 |
| 10.0 | 22.0 | 36.0 | 12.0 | 22.0 | KRV 22 | 45 g | KRVE 22 | 49 g | 0.3 | 23 | - | M10X1 | 12 |
| 10.0 | 22.0 | 36.0 | 12.0 | 22.0 | KRV 22PP | 45 g | KRVE 22PP | 49 g | 0.3 | 23 | - | M10X1 | 12 |
| 10.0 | 26.0 | 36.0 | 12.0 | 26.0 | KR 26 | 58 g | KRE 26 | 62 g | 0.3 | 23 | - | M10X1 | 12 |
| 10.0 | 26.0 | 36.0 | 12.0 | 26.0 | KR 26PP | 58 g | KRE 26PP | 62 g | 0.3 | 23 | - | M10X1 | 12 |
| 10.0 | 26.0 | 36.0 | 12.0 | 26.0 | KRV 26 | 61 g | KRVE 26 | 65 g | 0.3 | 23 | - | M10X1 | 12 |
| 10.0 | 26.0 | 36.0 | 12.0 | 26.0 | KRV 26PP | 61 g | KRVE 26PP | 65 g | 0.3 | 23 | - | M10X1 | 12 |
| 12.0 | 30.0 | 40.0 | 14.0 | 30.0 | KR 30 | 87 g | KRE 30 | 93 g | 0.6 | 25 | 6 | M12X1.5 | 13 |
| 12.0 | 30.0 | 40.0 | 14.0 | 30.0 | KR 30PP | 87 g | KRE 30PP | 93 g | 0.6 | 25 | 6 | M12X1.5 | 13 |
| 12.0 | 30.0 | 40.0 | 14.0 | 30.0 | KRV 30 | 89 g | KRVE 30 | 95 g | 0.6 | 25 | 6 | M12X1.5 | 13 |
| 12.0 | 30.0 | 40.0 | 14.0 | 30.0 | KRV 30PP | 89 g | KRVE 30PP | 95 g | 0.6 | 25 | 6 | M12X1.5 | 13 |
| 12.0 | 32.0 | 40.0 | 14.0 | 32.0 | KR 32 | 98 g | KRE 32 | 104 g | 0.6 | 25 | 6 | M12X1.5 | 13 |
| 12.0 | 32.0 | 40.0 | 14.0 | 32.0 | KR 32PP | 98 g | KRE 32PP | 104 g | 0.6 | 25 | 6 | M12X1.5 | 13 |
| 12.0 | 32.0 | 40.0 | 14.0 | 32.0 | KRV 32 | 100 g | KRVE 32 | 106 g | 0.6 | 25 | 6 | M12X1.5 | 13 |
| 12.0 | 32.0 | 40.0 | 14.0 | 32.0 | KRV 32PP | 100 g | KRVE 32PP | 106 g | 0.6 | 25 | 6 | M12X1.5 | 13 |
| 16.0 | 35.0 | 52.0 | 18.0 | 35.0 | KR 35 | 169 g | KRE 35 | 182 g | 0.6 | 32.5 | 8 | M16X1.5 | 17 |
| 16.0 | 35.0 | 52.0 | 18.0 | 35.0 | KR 35PP | 169 g | KRE 35PP | 182 g | 0.6 | 32.5 | 8 | M16X1.5 | 17 |
| 16.0 | 35.0 | 52.0 | 18.0 | 35.0 | KRV 35 | 171 g | KRVE 35 | 184 g | 0.6 | 32.5 | 8 | M16X1.5 | 17 |
| 16.0 | 35.0 | 52.0 | 18.0 | 35.0 | KRV 35PP | 171 g | KRVE 35PP | 184 g | 0.6 | 32.5 | 8 | M16X1.5 | 17 |
| 16.0 | 35.0 | 52.0 | 18.0 | 35.0 | NUKR 35 | 164 g | NUKRE 35 | 177 g | 0.6 | 32.5 ⁽⁴⁾ | 8 | M16X1.5 | 17 |
| 18.0 | 40.0 | 58.0 | 20.0 | 40.0 | KR 40 | 274 g | KRE 40 | 263 g | 1 | 36.5 | 8 | M18X1.5 | 19 |

| Dimensions (mm) | | | | | | | Nut Tightening Torque Ma Nm | Basic Load Ratings | | | | | | Limiting Speed x1000 rpm |
|------------------|----|--------------------|-------------------|------------------|----|-----|---|------------------------|---------|---------|----------|------------|-------------|-----------------------------------|
| M | M1 | C1 | D | Eccentric Collar | | | | Stud Type Track Roller | | | | | | |
| | | | | h9 | B1 | e | | C N | Co N | Cw N | Cow N | Fr perm | For perm | |
| 4 ⁽⁵⁾ | - | 0.6 | 12 | 9 | 7 | 0.5 | 3 | 3800 | 3750 | 3150 | 3300 | - | - | 22.0 |
| 4 ⁽⁵⁾ | - | 0.6 | 12 | 9 | 7 | 0.5 | 3 | 3800 | 3750 | 3150 | 3300 | - | - | 16.0 |
| 4 ⁽⁵⁾ | - | 0.6 | 12 | 9 | 7 | 0.5 | 3 | 6400 | 8500 | 4850 | 6500 | - | - | 8.5 |
| 4 ⁽⁵⁾ | - | 0.6 | 12 | 9 | 7 | 0.5 | 3 | 6400 | 8500 | 4850 | 6500 | - | - | 8.5 |
| 4 ⁽⁵⁾ | - | 0.6 | 14 | 11 | 9 | 0.5 | 8 | 4250 | 4600 | 3500 | 3900 | - | - | 20.0 |
| 4 ⁽⁵⁾ | - | 0.6 | 14 | 11 | 9 | 0.5 | 8 | 4250 | 4600 | 3500 | 3900 | - | - | 14.0 |
| 4 ⁽⁵⁾ | - | 0.6 | 14 | 11 | 9 | 0.5 | 8 | 7300 | 10800 | 5500 | 7900 | - | - | 7.0 |
| 4 ⁽⁵⁾ | - | 0.6 | 14 | 11 | 9 | 0.5 | 8 | 7300 | 10800 | 5500 | 7900 | - | - | 7.0 |
| 4 | - | 0.6 | 17 | 13 | 10 | 0.5 | 15 | 5700 | 6500 | 4450 | 5200 | - | - | 16.0 |
| 4 | - | 0.6 | 17 | 13 | 10 | 0.5 | 15 | 5700 | 6500 | 4450 | 5200 | - | - | 11.0 |
| 4 | - | 0.6 | 17 | 13 | 10 | 0.5 | 15 | 8600 | 12900 | 6300 | 9100 | - | - | 6.0 |
| 4 | - | 0.6 | 17 | 13 | 10 | 0.5 | 15 | 8600 | 12900 | 6300 | 9100 | - | - | 6.0 |
| 4 | 3 | 0.6 | 17 | 13 | 10 | 0.5 | 15 | 5700 | 6500 | 5100 | 6300 | - | - | 16.0 |
| 4 | 3 | 0.6 | 17 | 13 | 10 | 0.5 | 15 | 5700 | 6500 | 5100 | 6300 | - | - | 11.0 |
| 4 | 3 | 0.6 | 17 | 13 | 10 | 0.5 | 15 | 8600 | 12900 | 7300 | 11300 | - | - | 6.0 |
| 4 | 3 | 0.6 | 17 | 13 | 10 | 0.5 | 15 | 8600 | 12900 | 7300 | 11300 | - | - | 6.0 |
| 6 | 3 | 0.6 | 23 | 15 | 11 | 0.5 | 22 | 8100 | 9700 | 6800 | 8400 | - | - | 11.0 |
| 6 | 3 | 0.6 | 23 | 15 | 11 | 0.5 | 22 | 8100 | 9700 | 6800 | 8400 | - | - | 8.3 |
| 6 | 3 | 0.6 | 23 | 15 | 11 | 0.5 | 22 | 12200 | 19000 | 9500 | 14600 | - | - | 4.5 |
| 6 | 3 | 0.6 | 23 | 15 | 11 | 0.5 | 22 | 12200 | 19000 | 9500 | 14600 | - | - | 4.5 |
| 6 | 3 | 0.8 | 27 | 15 | 11 | 0.5 | 22 | 8100 | 9700 | 7100 | 9000 | - | - | 11.0 |
| 6 | 3 | 0.8 | 27 | 15 | 11 | 0.5 | 22 | 8100 | 9700 | 7100 | 9000 | - | - | 8.3 |
| 6 | 3 | 0.8 | 27 | 15 | 11 | 0.5 | 22 | 12200 | 19000 | 10000 | 15800 | - | - | 4.5 |
| 6 | 3 | 0.8 | 27 | 15 | 11 | 0.5 | 22 | 12200 | 19000 | 10000 | 15800 | - | - | 4.5 |
| 6 | 3 | 0.8 | 27 | 20 | 14 | 1 | 58 | 12900 | 19000 | 9700 | 14100 | - | - | 7.0 |
| 6 | 3 | 0.8 | 27 | 20 | 14 | 1 | 58 | 12900 | 19000 | 9700 | 14100 | - | - | 7.0 |
| 6 | 3 | 0.8 | 27 | 20 | 14 | 1 | 58 | 18300 | 35000 | 12800 | 23000 | - | - | 3.4 |
| 6 | 3 | 0.8 | 27 | 20 | 14 | 1 | 58 | 18300 | 35000 | 12800 | 23000 | - | - | 3.4 |
| 6 | 3 | 0.8 ⁽⁴⁾ | 21 ⁽⁴⁾ | 20 | 14 | 1 | 58 | 23000 | 27000 | 16000 | 18300 | 8300 | 16400 | 6.5 |
| 6 | 3 | 0.8 | 32 | 22 | 16 | 1 | 87 | 14200 | 20400 | 10900 | 15500 | - | - | 6.0 |

KR曲线滚轮轴承



5

| Dimensions (mm) | | | | Outside Diameter (mm) | Designation /Type | Weight (g) approx. | With Eccentric Collar | Weight (g) approx. | Dimensions (mm) | | | | |
|-----------------|------|------|------|-----------------------|-------------------|--------------------|-----------------------|--------------------|-----------------|---------------------|----|---------|----|
| d | D | B | C | | | | | | rs min | B1 | B2 | G | G1 |
| 18.0 | 40.0 | 58.0 | 20.0 | 40.0 | KR 40PP | 247 g | KRE 40PP | 263 g | 1 | 36.5 | 8 | M18X1.5 | 19 |
| 18.0 | 40.0 | 58.0 | 20.0 | 40.0 | KRV 40 | 249 g | KRVE 40 | 265 g | 1 | 36.5 | 8 | M18X1.5 | 19 |
| 18.0 | 40.0 | 58.0 | 20.0 | 40.0 | KRV 40PP | 249 g | KRVE 40PP | 265 g | 1 | 36.5 | 8 | M18X1.5 | 19 |
| 18.0 | 40.0 | 58.0 | 20.0 | 40.0 | NUKR 40 | 242 g | NUKRE 40 | 258 g | 1 | 36.5 ⁽⁴⁾ | 8 | M18X1.5 | 19 |

| Dimensions (mm) | | | | | | | Nut Tightening Torque Ma Nm | Basic Load Ratings | | | | | | Limiting Speed x1000 rpm |
|-----------------|----|--------------------|-------------------|------------------|----|---|---|------------------------|---------|---------|----------|------------|-------------|-----------------------------------|
| M | M1 | C1 | D | Eccentric Collar | | | | Stud Type Track Roller | | | | | | |
| | | | | h9 | B1 | e | | C N | Co N | Cw N | Cow N | Fr perm | For perm | |
| 6 | 3 | 0.8 | 32 | 22 | 16 | 1 | 87 | 14200 | 20400 | 10900 | 15500 | - | - | 6.0 |
| 6 | 3 | 0.8 | 32 | 22 | 16 | 1 | 87 | 21000 | 39500 | 14800 | 26500 | - | - | 2.9 |
| 6 | 3 | 0.8 | 32 | 22 | 16 | 1 | 87 | 21000 | 39500 | 14800 | 26500 | - | - | 2.9 |
| 6 | 3 | 0.8 ⁽⁴⁾ | 23 ⁽⁴⁾ | 22 | 16 | 1 | 87 | 24800 | 31000 | 18500 | 22800 | 13200 | 22800 | 5.5 |

www.zen.biz

版权所有。
未经版权所有人明确许可，不得擅自复制、摘录、更改该目录册的任何部分。

v.10 / 12



Bearings for your future