

# ZON™

BEARINGS FOR YOUR FUTURE



公制微型轴承



TÜVRheinland®

**CERT**

Certified ISO 2008  
Certified  
Management System  
according to ISO 9001:2008



BEARINGS FOR YOUR FUTURE

灿恩球轴承在标准和非标应用中最优质的产品。

灿恩除了经营一千余种微型轴承（内径1-10mm,包括英制）之外还提供薄壁、推力、标准公制轴承以及其他各种非标轴承。我们能够按照客户的特殊需求，通过一些新型材料例如陶瓷或者特殊钢材来设计轴承以满足工业，医疗，化学或食品加工行业上的各种应用。

无论数量多少，我们的技术部门都能根据客户要求定制各种非标轴承。

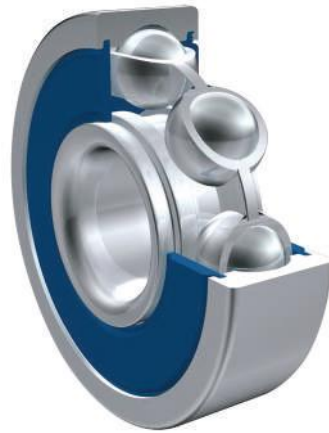
如果您在我们的产品目录册中无法找到您的理想型号，请联系我们经验丰富的销售团队。



灿恩已获得德国ISO 9001 TUV莱茵认证。

该技术认证被认为是轴承行业的最高检验标准。该认证受国际认可，被视为质量的保证，客户的首选以及品质服务的持续进步。

[www.zen.biz](http://www.zen.biz)



### 公制微型轴承



润滑油



润滑脂



高速运转适用



户外耐久性

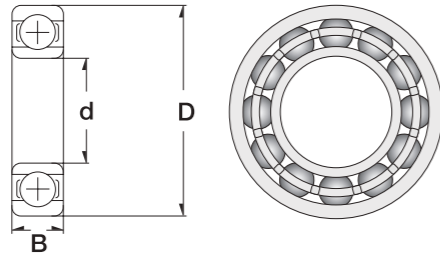


橡胶密封圈（可选）



金属防尘盖（可选）

公制微型轴承



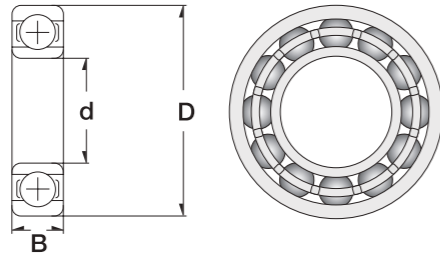
3

| standard<br>or flanged | Dimension (mm) |     |     | Designation/Type |           |              |               |              |           |
|------------------------|----------------|-----|-----|------------------|-----------|--------------|---------------|--------------|-----------|
|                        | d              | D   | B   | open             |           | 2Z           |               | 2RS/2TS      |           |
|                        |                |     |     | Chrome Steel     | Stainless | Chrome Steel | Stainless     | Chrome Steel | Stainless |
| standard               | 1.0            | 3.0 | 1.0 | 681              | S681      | -            | -             | -            | -         |
| flanged                | 1.0            | 3.0 | 1.0 | F 681            | SF 681    | -            | -             | -            | -         |
| standard               | 1.0            | 3.0 | 1.5 | MR 31            | SMR 31    | -            | -             | -            | -         |
| standard               | 1.0            | 4.0 | 1.6 | 691              | S691      | -            | -             | -            | -         |
| flanged                | 1.0            | 4.0 | 1.6 | F 691            | SF 691    | -            | -             | -            | -         |
| standard               | 1.2            | 4.0 | 2.5 | -                | -         | MR 41X-2Z    | SMR 41X-2Z    | -            | -         |
| standard               | 1.5            | 4.0 | 1.2 | 681X             | S681X     | -            | -             | -            | -         |
| flanged                | 1.5            | 4.0 | 1.2 | F 681X           | SF 681X   | -            | -             | -            | -         |
| standard               | 1.5            | 4.0 | 2.0 | -                | -         | 681X-2Z      | S681X-2Z      | -            | -         |
| flanged                | 1.5            | 4.0 | 2.0 | -                | -         | F 681X-2Z    | SF 681X-2Z    | -            | -         |
| standard               | 1.5            | 5.0 | 1.7 | X 1.5            | SX 1.5    | -            | -             | -            | -         |
| standard               | 1.5            | 5.0 | 2.0 | 691X             | S691X     | -            | -             | -            | -         |
| flanged                | 1.5            | 5.0 | 2.0 | F 691X           | SF 691X   | -            | -             | -            | -         |
| standard               | 1.5            | 5.0 | 2.6 | -                | -         | 691X-2Z      | S691X-2Z      | -            | -         |
| flanged                | 1.5            | 5.0 | 2.6 | -                | -         | F 691X-2Z    | SF 691X-2Z    | -            | -         |
| standard               | 1.5            | 6.0 | 2.5 | 601X             | S601X     | -            | -             | -            | -         |
| flanged                | 1.5            | 6.0 | 2.5 | F 601X           | SF 601X   | -            | -             | -            | -         |
| standard               | 1.5            | 6.0 | 3.0 | -                | -         | 601X-2Z      | S601X-2Z      | -            | -         |
| flanged                | 1.5            | 6.0 | 3.0 | -                | -         | F 601X-2Z    | SF 601X-2Z    | -            | -         |
| standard               | 2.0            | 4.0 | 1.2 | 672              | S672      | -            | -             | -            | -         |
| standard               | 2.0            | 5.0 | 1.5 | 682              | S682      | -            | -             | -            | -         |
| flanged                | 2.0            | 5.0 | 1.5 | F 682            | SF 682    | -            | -             | -            | -         |
| standard               | 2.0            | 5.0 | 2.0 | MR 52            | SMR 52    | -            | -             | -            | -         |
| standard               | 2.0            | 5.0 | 2.3 | -                | -         | 682-2Z       | S682-2Z       | -            | -         |
| flanged                | 2.0            | 5.0 | 2.3 | -                | -         | F 682-2Z     | SF 682-2Z     | -            | -         |
| standard               | 2.0            | 5.0 | 2.5 | -                | -         | MR 52-2Z     | SMR 52-2Z     | -            | -         |
| flanged                | 2.0            | 5.0 | 2.5 | -                | -         | MF 52-2Z     | SMF 52-2Z     | -            | -         |
| standard               | 2.0            | 6.0 | 2.3 | 692              | S692      | 692-2ZW2.3   | S692-2ZW2.3   | -            | -         |
| flanged                | 2.0            | 6.0 | 2.3 | F 692            | SF 692    | F 692-2ZW2.3 | SF 692-2ZW2.3 | -            | -         |
| standard               | 2.0            | 6.0 | 2.5 | MR 62            | SMR 62    | MR 62-2Z     | SMR 62-2Z     | -            | -         |
| flanged                | 2.0            | 6.0 | 2.5 | MF 62            | SMF 62    | MF 62-2Z     | SMF 62-2Z     | -            | -         |

| * Load Rating (only 100 Cr6) |            | * Limiting Speed x1000rpm (open & 2Z) |       | Standard cage type<br>Others on request | Weight (g) approx. |
|------------------------------|------------|---------------------------------------|-------|---|--------------------|
| C, dyn. N                    | C, stat. N | Grease                                | Oil   |   |                    |
| 96                           | 26         | 130.0                                 | 150.0 | W                                       | < 1 g              |
| 96                           | 26         | 130.0                                 | 150.0 | W                                       | < 1 g              |
| 96                           | 26         | 130.0                                 | 150.0 | W                                       | < 1 g              |
| 141                          | 37         | 100.0                                 | 120.0 | W                                       | < 1 g              |
| 141                          | 37         | 100.0                                 | 120.0 | W                                       | < 1 g              |
| 112                          | 33         | 110.0                                 | 130.0 | W                                       | < 1 g              |
| 112                          | 33         | 100.0                                 | 120.0 | W                                       | < 1 g              |
| 112                          | 33         | 100.0                                 | 120.0 | W                                       | < 1 g              |
| 112                          | 33         | 100.0                                 | 120.0 | W                                       | < 1 g              |
| 112                          | 33         | 100.0                                 | 120.0 | W                                       | < 1 g              |
| 169                          | 50         | 85.0                                  | 100.0 | W                                       | < 1 g              |
| 169                          | 50         | 85.0                                  | 100.0 | W                                       | < 1 g              |
| 169                          | 50         | 85.0                                  | 100.0 | W                                       | < 1 g              |
| 169                          | 50         | 85.0                                  | 100.0 | W                                       | < 1 g              |
| 330                          | 99         | 75.0                                  | 90.0  | W                                       | < 1 g              |
| 330                          | 99         | 75.0                                  | 90.0  | W                                       | < 1 g              |
| 330                          | 99         | 75.0                                  | 90.0  | W                                       | < 1 g              |
| 124                          | 40         | 91.0                                  | 104.0 | W                                       | < 1 g              |
| 169                          | 50         | 85.0                                  | 100.0 | W,J                                     | < 1 g              |
| 169                          | 50         | 85.0                                  | 100.0 | W,J                                     | < 1 g              |
| 169                          | 50         | 85.0                                  | 100.0 | W,J                                     | < 1 g              |
| 169                          | 50         | 85.0                                  | 100.0 | W,J                                     | < 1 g              |
| 169                          | 50         | 85.0                                  | 100.0 | W                                       | < 1 g              |
| 169                          | 50         | 85.0                                  | 100.0 | W                                       | < 1 g              |
| 330                          | 99         | 75.0                                  | 90.0  | W                                       | < 1 g              |
| 330                          | 99         | 75.0                                  | 90.0  | W                                       | < 1 g              |
| 330                          | 99         | 75.0                                  | 90.0  | W                                       | < 1 g              |
| 330                          | 99         | 75.0                                  | 90.0  | W                                       | < 1 g              |

4

公制微型轴承



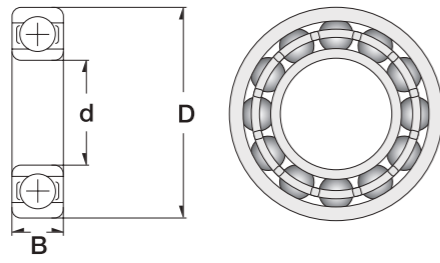
5

| standard<br>or flanged | Dimension (mm) |     |     | Designation/Type |           |              |            |              |           |
|------------------------|----------------|-----|-----|------------------|-----------|--------------|------------|--------------|-----------|
|                        | d              | D   | B   | open             |           | 2Z           |            | 2RS/2TS      |           |
|                        |                |     |     | Chrome Steel     | Stainless | Chrome Steel | Stainless  | Chrome Steel | Stainless |
| standard               | 2.0            | 6.0 | 3.0 | -                | -         | 692-2Z       | S692-2Z    | -            | -         |
| flanged                | 2.0            | 6.0 | 3.0 | -                | -         | F 692-2Z     | SF 692-2Z  | -            | -         |
| standard               | 2.0            | 7.0 | 2.5 | 602              | S602      | -            | -          | -            | -         |
| standard               | 2.0            | 7.0 | 2.8 | MR 72            | SMR 72    | -            | -          | -            | -         |
| standard               | 2.0            | 7.0 | 3.5 | -                | -         | 602-2Z       | S602-2Z    | -            | -         |
| flanged                | 2.0            | 7.0 | 3.5 | -                | -         | F 602-2Z     | SF 602-2Z  | -            | -         |
| standard               | 2.0            | 7.0 | 3.0 | -                | -         | MR 72-2Z     | SMR 72-2Z  | -            | -         |
| flanged                | 2.0            | 7.0 | 3.0 | -                | -         | MF 72-2Z     | SMF 72-2Z  | -            | -         |
| standard               | 2.5            | 6.0 | 1.8 | 682X             | S682X     | -            | -          | -            | -         |
| flanged                | 2.5            | 6.0 | 1.8 | F 682X           | SF 682X   | -            | -          | -            | -         |
| standard               | 2.5            | 6.0 | 2.6 | -                | -         | 682X-2Z      | S682X-2Z   | -            | -         |
| flanged                | 2.5            | 6.0 | 2.6 | -                | -         | F 682X-2Z    | SF 682X-2Z | -            | -         |
| standard               | 2.5            | 7.0 | 2.5 | 692X             | S692X     | -            | -          | -            | -         |
| flanged                | 2.5            | 7.0 | 2.5 | F 692X           | SF 692X   | -            | -          | -            | -         |
| standard               | 2.5            | 7.0 | 3.0 | -                | -         | X 2.5-2Z     | SX 2.5-2Z  | -            | -         |
| standard               | 2.5            | 7.0 | 3.5 | -                | -         | 692X-2Z      | S692X-2Z   | -            | -         |
| flanged                | 2.5            | 7.0 | 3.5 | -                | -         | F 692X-2Z    | SF 692X-2Z | -            | -         |
| standard               | 2.5            | 8.0 | 2.5 | MR 82X           | SMR 82X   | -            | -          | -            | -         |
| standard               | 2.5            | 8.0 | 2.8 | 602X             | S602X     | -            | -          | -            | -         |
| flanged                | 2.5            | 8.0 | 2.8 | F 602X           | SF 602X   | -            | -          | -            | -         |
| standard               | 2.5            | 8.0 | 4.0 | -                | -         | 602X-2Z      | S602X-2Z   | -            | -         |
| flanged                | 2.5            | 8.0 | 4.0 | -                | -         | F 602X-2Z    | SF 602X-2Z | -            | -         |
| standard               | 3.0            | 6.0 | 2.0 | MR 63            | SMR 63    | -            | -          | -            | -         |
| flanged                | 3.0            | 6.0 | 2.0 | MF 63            | SMF 63    | -            | -          | -            | -         |
| standard               | 3.0            | 6.0 | 2.5 | -                | -         | MR 63-2Z     | SMR 63-2Z  | -            | -         |
| flanged                | 3.0            | 6.0 | 2.5 | -                | -         | MF 63-2Z     | SMF 63-2Z  | -            | -         |
| standard               | 3.0            | 7.0 | 2.0 | 683              | S683      | -            | -          | -            | -         |
| flanged                | 3.0            | 7.0 | 2.0 | F 683            | SF 683    | -            | -          | -            | -         |
| standard               | 3.0            | 7.0 | 3.0 | -                | -         | 683-2Z       | S683-2Z    | 683-2TS      | S683-2TS  |
| flanged                | 3.0            | 7.0 | 3.0 | -                | -         | F 683-2Z     | SF 683-2Z  | -            | -         |
| standard               | 3.0            | 8.0 | 2.5 | MR 83            | SMR 83    | -            | -          | -            | -         |
| flanged                | 3.0            | 8.0 | 2.5 | MF 83            | SMF 83    | -            | -          | -            | -         |

6

| * Load Rating (only 100 Cr6) |            | * Limiting Speed x1000rpm (open & 2Z) |      | Standard cage type<br>Others on request | Weight (g) approx. |
|------------------------------|------------|---------------------------------------|------|---|--------------------|
| C, dyn. N                    | C, stat. N | Grease                                | Oil  |   |                    |
| 330                          | 99         | 75.0                                  | 90.0 | W                                       | < 1 g              |
| 330                          | 99         | 75.0                                  | 90.0 | W                                       | < 1 g              |
| 386                          | 129        | 60.0                                  | 71.0 | W                                       | < 1 g              |
| 386                          | 129        | 63.0                                  | 75.0 | W                                       | < 1 g              |
| 386                          | 129        | 60.0                                  | 71.0 | W                                       | < 1 g              |
| 386                          | 129        | 60.0                                  | 71.0 | W                                       | < 1 g              |
| 386                          | 129        | 63.0                                  | 75.0 | W                                       | < 1 g              |
| 386                          | 129        | 63.0                                  | 75.0 | W                                       | < 1 g              |
| 209                          | 74         | 71.0                                  | 80.0 | W                                       | < 1 g              |
| 209                          | 74         | 71.0                                  | 80.0 | W                                       | < 1 g              |
| 209                          | 74         | 71.0                                  | 80.0 | W                                       | < 1 g              |
| 209                          | 74         | 71.0                                  | 80.0 | W                                       | < 1 g              |
| 386                          | 129        | 63.0                                  | 75.0 | W                                       | < 1 g              |
| 386                          | 129        | 63.0                                  | 75.0 | W                                       | < 1 g              |
| 386                          | 129        | 63.0                                  | 75.0 | W                                       | < 1 g              |
| 386                          | 129        | 63.0                                  | 75.0 | W                                       | < 1 g              |
| 558                          | 180        | 60.0                                  | 67.0 | W                                       | < 1 g              |
| 552                          | 177        | 60.0                                  | 71.0 | W                                       | < 1 g              |
| 552                          | 177        | 60.0                                  | 71.0 | W                                       | < 1 g              |
| 552                          | 177        | 60.0                                  | 71.0 | W                                       | < 1 g              |
| 552                          | 177        | 60.0                                  | 71.0 | W                                       | < 1 g              |
| 209                          | 74         | 71.0                                  | 80.0 | W                                       | < 1 g              |
| 209                          | 74         | 71.0                                  | 80.0 | W                                       | < 1 g              |
| 209                          | 74         | 71.0                                  | 80.0 | W                                       | < 1 g              |
| 209                          | 74         | 71.0                                  | 80.0 | W                                       | < 1 g              |
| 311                          | 112        | 63.0                                  | 75.0 | W,J                                     | < 1 g              |
| 311                          | 112        | 63.0                                  | 75.0 | W,J                                     | < 1 g              |
| 311                          | 112        | 63.0                                  | 75.0 | W,J                                     | < 1 g              |
| 311                          | 112        | 63.0                                  | 75.0 | W,J                                     | < 1 g              |
| 395                          | 141        | 60.0                                  | 67.0 | W                                       | < 1 g              |
| 395                          | 141        | 60.0                                  | 67.0 | W                                       | < 1 g              |

公制微型轴承



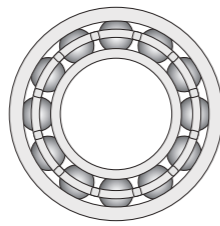
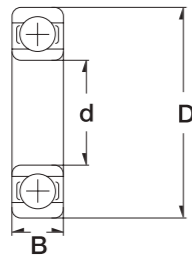
7

| standard<br>or flanged | Dimension (mm) |      |     | Designation/Type |           |              |            |              |            |
|------------------------|----------------|------|-----|------------------|-----------|--------------|------------|--------------|------------|
|                        | d              | D    | B   | open             |           | 2Z           |            | 2RS/2TS      |            |
|                        |                |      |     | Chrome Steel     | Stainless | Chrome Steel | Stainless  | Chrome Steel | Stainless  |
| standard               | 3.0            | 8.0  | 3.0 | 693              | S693      | -            | -          | -            | -          |
| flanged                | 3.0            | 8.0  | 3.0 | F 693            | SF 693    | -            | -          | -            | -          |
| standard               | 3.0            | 8.0  | 3.0 | -                | -         | MR 83-2Z     | SMR 83-2Z  | -            | -          |
| flanged                | 3.0            | 8.0  | 3.0 | -                | -         | MF 83-2Z     | SMF 83-2Z  | -            | -          |
| standard               | 3.0            | 8.0  | 4.0 | -                | -         | 693-2Z       | S693-2Z    | -            | -          |
| flanged                | 3.0            | 8.0  | 4.0 | -                | -         | F 693-2Z     | SF 693-2Z  | -            | -          |
| standard               | 3.0            | 9.0  | 2.5 | MR 93            | SMR 93    | -            | -          | -            | -          |
| flanged                | 3.0            | 9.0  | 2.5 | MF 93            | SMF 93    | -            | -          | -            | -          |
| standard               | 3.0            | 9.0  | 3.0 | 603              | S603      | -            | -          | -            | -          |
| flanged                | 3.0            | 9.0  | 3.0 | F 603            | SF 603    | -            | -          | -            | -          |
| standard               | 3.0            | 9.0  | 4.0 | -                | -         | MR 93-2Z     | SMR 93-2Z  | -            | -          |
| flanged                | 3.0            | 9.0  | 4.0 | -                | -         | MF 93-2Z     | SMF 93-2Z  | -            | -          |
| standard               | 3.0            | 9.0  | 5.0 | -                | -         | 603-2Z       | S603-2Z    | -            | -          |
| flanged                | 3.0            | 9.0  | 5.0 | -                | -         | F 603-2Z     | SF 603-2Z  | -            | -          |
| standard               | 3.0            | 10.0 | 4.0 | 623              | S623      | 623-2Z       | S623-2Z    | 623-2RS      | S623-2RS   |
| flanged                | 3.0            | 10.0 | 4.0 | F 623            | SF 623    | F 623-2Z     | SF 623-2Z  | F 623-2RS    | SF 623-2RS |
| standard               | 3.0            | 13.0 | 5.0 | -                | -         | 633-2Z       | S633-2Z    | -            | -          |
| standard               | 3.5            | 9.0  | 4.0 | -                | -         | MR 93X-2Z    | SMR 93X-2Z | -            | -          |
| standard               | 4.0            | 7.0  | 2.0 | MR 74            | SMR 74    | -            | -          | -            | -          |
| flanged                | 4.0            | 7.0  | 2.0 | MF 74            | SMF 74    | -            | -          | -            | -          |
| standard               | 4.0            | 7.0  | 2.5 | -                | -         | MR 74-2Z     | SMR 74-2Z  | -            | -          |
| flanged                | 4.0            | 7.0  | 2.5 | -                | -         | MF 74-2Z     | SMF 74-2Z  | -            | -          |
| standard               | 4.0            | 8.0  | 2.0 | MR 84            | SMR 84    | -            | -          | -            | -          |
| flanged                | 4.0            | 8.0  | 2.0 | MF 84            | SMF 84    | -            | -          | -            | -          |
| standard               | 4.0            | 8.0  | 3.0 | -                | -         | MR 84-2Z     | SMR 84-2Z  | MR 84-2RS    | SMR 84-2RS |
| flanged                | 4.0            | 8.0  | 3.0 | -                | -         | MF 84-2Z     | SMF 84-2Z  | MF 84-2RS    | SMF 84-2RS |
| standard               | 4.0            | 9.0  | 2.5 | 684              | S684      | -            | -          | -            | -          |
| flanged                | 4.0            | 9.0  | 2.5 | F 684            | SF 684    | -            | -          | -            | -          |
| standard               | 4.0            | 9.0  | 4.0 | -                | -         | 684-2Z       | S684-2Z    | 684-2RS      | S684-2RS   |
| flanged                | 4.0            | 9.0  | 4.0 | -                | -         | F 684-2Z     | SF 684-2Z  | F 684-2RS    | SF 684-2RS |
| standard               | 4.0            | 10.0 | 3.0 | MR 104           | SMR 104   | -            | -          | -            | -          |
| flanged                | 4.0            | 10.0 | 3.0 | MF 104           | SMF 104   | -            | -          | -            | -          |

8

| * Load Rating (only 100 Cr6) |            | * Limiting Speed x1000rpm (open & 2Z) |      | Standard cage type<br>Others on request | Weight (g) approx. |
|------------------------------|------------|---------------------------------------|------|---|--------------------|
| C, dyn. N                    | C, stat. N | Grease                                | Oil  |   |                    |
| 558                          | 180        | 60.0                                  | 67.0 | W                                       | < 1 g              |
| 558                          | 180        | 60.0                                  | 67.0 | W                                       | < 1 g              |
| 395                          | 141        | 60.0                                  | 67.0 | W                                       | < 1 g              |
| 395                          | 141        | 60.0                                  | 67.0 | W                                       | < 1 g              |
| 558                          | 180        | 60.0                                  | 67.0 | W                                       | < 1 g              |
| 558                          | 180        | 60.0                                  | 67.0 | W                                       | < 1 g              |
| 571                          | 189        | 56.0                                  | 67.0 | W                                       | < 1 g              |
| 571                          | 189        | 56.0                                  | 67.0 | W                                       | < 1 g              |
| 571                          | 189        | 56.0                                  | 67.0 | W                                       | < 2 g              |
| 571                          | 189        | 56.0                                  | 67.0 | W                                       | < 2 g              |
| 571                          | 189        | 56.0                                  | 67.0 | W                                       | < 2 g              |
| 571                          | 189        | 56.0                                  | 67.0 | W                                       | < 2 g              |
| 631                          | 219        | 50.0                                  | 60.0 | W,J                                     | < 2 g              |
| 631                          | 219        | 50.0                                  | 60.0 | W,J                                     | < 2 g              |
| 1301                         | 488        | 40.0                                  | 48.0 | J                                       | < 4 g              |
| 571                          | 189        | 56.0                                  | 67.0 | W                                       | < 3 g              |
| 255                          | 108        | 60.0                                  | 67.0 | W                                       | < 1 g              |
| 255                          | 108        | 60.0                                  | 67.0 | W                                       | < 1 g              |
| 255                          | 108        | 60.0                                  | 67.0 | W                                       | < 1 g              |
| 255                          | 108        | 60.0                                  | 67.0 | W                                       | < 1 g              |
| 395                          | 141        | 56.0                                  | 67.0 | W                                       | < 1 g              |
| 395                          | 141        | 56.0                                  | 67.0 | W                                       | < 1 g              |
| 395                          | 141        | 56.0                                  | 67.0 | W                                       | < 2 g              |
| 395                          | 141        | 56.0                                  | 67.0 | W                                       | < 2 g              |
| 641                          | 227        | 53.0                                  | 63.0 | W,J                                     | < 2 g              |
| 641                          | 227        | 53.0                                  | 63.0 | W,J                                     | < 2 g              |
| 641                          | 227        | 53.0                                  | 63.0 | W,J                                     | < 2 g              |
| 641                          | 227        | 53.0                                  | 63.0 | W,J                                     | < 2 g              |
| 711                          | 272        | 48.0                                  | 56.0 | W,J                                     | < 2 g              |
| 711                          | 272        | 48.0                                  | 56.0 | W,J                                     | < 2 g              |

公制微型轴承



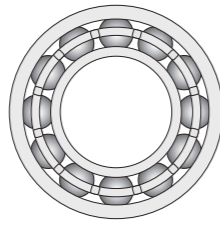
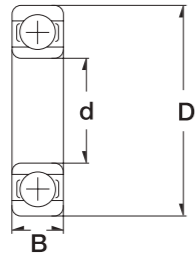
9

| standard<br>or flanged | Dimension (mm) |      |     | Designation/Type |           |              |            |              |             |
|------------------------|----------------|------|-----|------------------|-----------|--------------|------------|--------------|-------------|
|                        | d              | D    | B   | open             |           | 2Z           |            | 2RS/2TS      |             |
|                        |                |      |     | Chrome Steel     | Stainless | Chrome Steel | Stainless  | Chrome Steel | Stainless   |
| standard               | 4.0            | 10.0 | 4.0 | -                | -         | MR 104-2Z    | SMR 104-2Z | MR 104-2RS   | SMR 104-2TS |
| flanged                | 4.0            | 10.0 | 4.0 | -                | -         | MF 104-2Z    | SMF 104-2Z | MF 104-2RS   | SMF 104-2TS |
| standard               | 4.0            | 11.0 | 4.0 | 694              | S694      | 694-2Z       | S694-2Z    | 694-2RS      | S694-2RS    |
| flanged                | 4.0            | 11.0 | 4.0 | F 694            | SF 694    | F 694-2Z     | SF 694-2Z  | F 694-2RS    | SF 694-2RS  |
| standard               | 4.0            | 12.0 | 4.0 | 604              | S604      | 604-2Z       | S604-2Z    | 604-2RS      | S604-2RS    |
| flanged                | 4.0            | 12.0 | 4.0 | F 604            | SF 604    | F 604-2Z     | SF 604-2Z  | F 604-2RS    | SF 604-2RS  |
| standard               | 4.0            | 13.0 | 5.0 | 624              | S624      | 624-2Z       | S624-2Z    | 624-2RS      | S624-2RS    |
| flanged                | 4.0            | 13.0 | 5.0 | F 624            | SF 624    | F 624-2Z     | SF 624-2Z  | F 624-2RS    | SF 624-2RS  |
| standard               | 4.0            | 16.0 | 5.0 | 634              | S634      | 634-2Z       | S634-2Z    | 634-2RS      | S634-2RS    |
| flanged                | 4.0            | 16.0 | 5.0 | F 634            | SF 634    | F 634-2Z     | SF 634-2Z  | F 634-2RS    | SF 634-2RS  |
| standard               | 5.0            | 8.0  | 2.0 | MR 85            | SMR 85    | -            | -          | -            | -           |
| flanged                | 5.0            | 8.0  | 2.0 | MF 85            | SMF 85    | -            | -          | -            | -           |
| standard               | 5.0            | 8.0  | 2.5 | -                | -         | MR 85-2Z     | SMR 85-2Z  | -            | -           |
| flanged                | 5.0            | 8.0  | 2.5 | -                | -         | MF 85-2Z     | SMF 85-2Z  | -            | -           |
| standard               | 5.0            | 9.0  | 2.5 | MR 95            | SMR 95    | -            | -          | -            | -           |
| flanged                | 5.0            | 9.0  | 2.5 | MF 95            | SMF 95    | -            | -          | -            | -           |
| standard               | 5.0            | 9.0  | 3.0 | -                | -         | MR 95-2Z     | SMR 95-2Z  | MR 95-2TS    | SMR 95-2TS  |
| flanged                | 5.0            | 9.0  | 3.0 | -                | -         | MF 95-2Z     | SMF 95-2Z  | MF 95-2TS    | SMF 95-2TS  |
| standard               | 5.0            | 10.0 | 3.0 | MR 105           | SMR 105   | -            | -          | -            | -           |
| flanged                | 5.0            | 10.0 | 3.0 | MF 105           | SMF 105   | -            | -          | -            | -           |
| standard               | 5.0            | 10.0 | 4.0 | -                | -         | MR 105-2Z    | SMR 105-2Z | MR 105-2RS   | SMR 105-2RS |
| flanged                | 5.0            | 10.0 | 4.0 | -                | -         | MF 105-2Z    | SMF 105-2Z | MF 105-2RS   | SMF 105-2RS |
| standard               | 5.0            | 11.0 | 3.0 | S685             | S685      | -            | -          | -            | -           |
| flanged                | 5.0            | 11.0 | 3.0 | F 685            | SF 685    | -            | -          | -            | -           |
| standard               | 5.0            | 11.0 | 4.0 | -                | -         | MR 115-2Z    | SMR 115-2Z | MR 115-2RS   | SMR 115-2RS |
| flanged                | 5.0            | 11.0 | 4.0 | -                | -         | MF 115-2Z    | SMF 115-2Z | MF 115-2RS   | SMF 115-2RS |
| standard               | 5.0            | 11.0 | 5.0 | -                | -         | 685-2Z       | S685-2Z    | 685-2RS      | S685-2RS    |
| flanged                | 5.0            | 11.0 | 5.0 | -                | -         | F 685-2Z     | SF 685-2Z  | F 685-2RS    | SF 685-2RS  |
| standard               | 5.0            | 13.0 | 4.0 | 695              | S695      | 695-2Z       | S695-2Z    | 695-2RS      | S695-2RS    |
| flanged                | 5.0            | 13.0 | 4.0 | F 695            | SF 695    | F695-2Z      | SF695-2Z   | F695-2RS     | SF695-2RS   |
| standard               | 5.0            | 13.0 | 5.0 | 695W5            | S695W5    | 695-2ZW5     | S695-2Z W5 | 695-2RSW5    | S695-2RSW5  |

10

| * Load Rating (only 100 Cr6) |            | * Limiting Speed x1000rpm (open & 2Z) |      | Standard cage type<br>Others on request | Weight (g) approx. |
|------------------------------|------------|---------------------------------------|------|---|--------------------|
| C, dyn. N                    | C, stat. N | Grease                                | Oil  |   |                    |
| 711                          | 272        | 48.0                                  | 56.0 | W,J                                     | < 2 g              |
| 711                          | 272        | 48.0                                  | 56.0 | W,J                                     | < 2 g              |
| 957                          | 350        | 48.0                                  | 56.0 | W,J                                     | < 2 g              |
| 957                          | 350        | 48.0                                  | 56.0 | W,J                                     | < 2 g              |
| 957                          | 350        | 48.0                                  | 56.0 | W,J                                     | < 3 g              |
| 957                          | 350        | 48.0                                  | 56.0 | W,J                                     | < 3 g              |
| 1301                         | 488        | 40.0                                  | 48.0 | W,J                                     | < 4 g              |
| 1301                         | 488        | 40.0                                  | 48.0 | W,J                                     | < 4 g              |
| 1340                         | 523        | 36.0                                  | 43.0 | W,J                                     | < 6 g              |
| 1340                         | 523        | 36.0                                  | 43.0 | W,J                                     | < 6 g              |
| 218                          | 90         | 53.0                                  | 63.0 | W                                       | < 1 g              |
| 218                          | 90         | 53.0                                  | 63.0 | W                                       | < 1 g              |
| 218                          | 90         | 53.0                                  | 63.0 | W                                       | < 1 g              |
| 218                          | 90         | 53.0                                  | 63.0 | W                                       | < 1 g              |
| 431                          | 169        | 50.0                                  | 60.0 | W                                       | < 1 g              |
| 431                          | 169        | 50.0                                  | 60.0 | W                                       | < 1 g              |
| 431                          | 169        | 50.0                                  | 60.0 | W                                       | < 1 g              |
| 431                          | 169        | 50.0                                  | 60.0 | W                                       | < 1 g              |
| 431                          | 169        | 50.0                                  | 60.0 | W,J                                     | < 2 g              |
| 431                          | 169        | 50.0                                  | 60.0 | W,J                                     | < 2 g              |
| 431                          | 169        | 50.0                                  | 60.0 | W,J                                     | < 2 g              |
| 431                          | 169        | 50.0                                  | 60.0 | W,J                                     | < 2 g              |
| 716                          | 282        | 45.0                                  | 53.0 | W                                       | < 2 g              |
| 716                          | 282        | 45.0                                  | 53.0 | W                                       | < 2 g              |
| 716                          | 282        | 45.0                                  | 53.0 | W,J                                     | < 1 g              |
| 716                          | 282        | 45.0                                  | 53.0 | W,J                                     | < 1 g              |
| 716                          | 282        | 45.0                                  | 53.0 | W                                       | < 2 g              |
| 716                          | 282        | 45.0                                  | 53.0 | W                                       | < 2 g              |
| 1077                         | 432        | 43.0                                  | 50.0 | W,J                                     | < 3 g              |
| 1077                         | 432        | 43.0                                  | 50.0 | W,J                                     | < 3 g              |
| 1077                         | 432        | 43.0                                  | 50.0 | W,J                                     | < 3 g              |

公制微型轴承



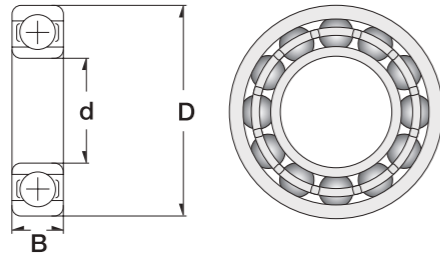
11

| standard<br>or flanged | Dimension (mm) |      |     | Designation/Type      |                    |              |             |              |             |
|------------------------|----------------|------|-----|-----------------------|--------------------|--------------|-------------|--------------|-------------|
|                        | d              | D    | B   | open                  |                    | 2Z           |             | 2RS/2TS      |             |
|                        |                |      |     | Chrome Steel          | Stainless          | Chrome Steel | Stainless   | Chrome Steel | Stainless   |
| standard               | 5.0            | 14.0 | 5.0 | 605                   | S605               | 605-2Z       | S605-2Z     | 605-2RS      | S605-2RS    |
| flanged                | 5.0            | 14.0 | 5.0 | F 605                 | SF 605             | F 605-2Z     | SF 605-2Z   | F 605-2RS    | SF 605-2RS  |
| standard               | 5.0            | 14.0 | 7.0 | Zweihohes Radiallager | Double Row Bearing | 30/5-2Z      | -           | 30/5-2RS     | -           |
| standard               | 5.0            | 16.0 | 5.0 | 625                   | S625               | 625-2Z       | S625-2Z     | 625-2RS      | S625-2RS    |
| flanged                | 5.0            | 16.0 | 5.0 | F 625                 | SF 625             | F 625-2Z     | SF 625-2Z   | F 625-2RS    | SF 625-2RS  |
| standard               | 5.0            | 19.0 | 6.0 | 635                   | S635               | 635-2Z       | S635-2Z     | 635-2RS      | S635-2RS    |
| flanged                | 5.0            | 19.0 | 6.0 | F 635                 | SF 635             | F 635-2Z     | SF 635-2Z   | F 635-2RS    | SF 635-2RS  |
| standard               | 6.0            | 10.0 | 2.5 | MR 106                | SMR 106            | -            | -           | -            | -           |
| flanged                | 6.0            | 10.0 | 2.5 | MF 106                | SMF 106            | -            | -           | -            | -           |
| standard               | 6.0            | 10.0 | 3.0 | -                     | -                  | MR 106-2Z    | SMR 106-2Z  | MR 106-2RS   | SMR 106-2RS |
| flanged                | 6.0            | 10.0 | 3.0 | -                     | -                  | MF 106-2Z    | SMF 106-2Z  | MF 106-2RS   | SMF 106-2RS |
| standard               | 6.0            | 12.0 | 3.0 | MR 126                | SMR 126            | -            | -           | -            | -           |
| flanged                | 6.0            | 12.0 | 3.0 | MF 126                | SMF 126            | -            | -           | -            | -           |
| standard               | 6.0            | 12.0 | 4.0 | -                     | -                  | MR 126-2Z    | SMR 126-2Z  | MR 126-2RS   | SMR 126-2RS |
| flanged                | 6.0            | 12.0 | 4.0 | -                     | -                  | MF 126-2Z    | SMF 126-2Z  | MF 126-2RS   | SMF 126-2RS |
| standard               | 6.0            | 13.0 | 3.5 | 686                   | S686               | -            | -           | -            | -           |
| flanged                | 6.0            | 13.0 | 3.5 | F 686                 | SF 686             | -            | -           | -            | -           |
| standard               | 6.0            | 13.0 | 4.5 | -                     | -                  | 686-2ZW4.5   | S686-2ZW4.5 | 686-2TS4.5   | S686-2TS4.5 |
| standard               | 6.0            | 13.0 | 5.0 | 686W5                 | S686W5             | 686-2Z       | S686-2Z     | 686-2RS      | S686-2RS    |
| flanged                | 6.0            | 13.0 | 5.0 | -                     | -                  | F 686-2Z     | SF 686-2Z   | F 686-2RS    | SF 686-2RS  |
| standard               | 6.0            | 15.0 | 5.0 | 696W5                 | S696W5             | 696-2ZW5     | S696-2ZW5   | 696-2RSW5    | S696-2RSW5  |
| flanged                | 6.0            | 15.0 | 5.0 | F 696                 | SF 696             | F 696-2Z     | SF 696-2Z   | F 696-2RS    | SF 696-2RS  |
| standard               | 6.0            | 16.0 | 5.0 | 696A                  | S696A              | 696A-2Z      | S696A-2Z    | 696A-2RS     | S696A-2RS   |
| flanged                | 6.0            | 16.0 | 5.0 | F 696A                | SF 696A            | F 696A-2Z    | SF 696A-2Z  | F 696A-RS    | SF 696A-2RS |
| standard               | 6.0            | 17.0 | 6.0 | 606                   | S606               | 606-2Z       | S606-2Z     | 606-2RS      | S606-2RS    |
| flanged                | 6.0            | 17.0 | 6.0 | F 606                 | SF 606             | F 606-2Z     | SF 606-2Z   | F 606-2RS    | SF 606-2RS  |
| standard               | 6.0            | 17.0 | 6.0 | Zweihohes Radiallager | Double Row Bearing | 30/6-2Z      | -           | 30/6-2RS     | -           |
| standard               | 6.0            | 19.0 | 6.0 | 626                   | S626               | 626-2Z       | S626-2Z     | 626-2RS      | S626-2RS    |
| flanged                | 6.0            | 19.0 | 6.0 | F 626                 | SF 626             | F 626-2Z     | SF 626-2Z   | F 626-2RS    | SF 626-2RS  |
| standard               | 6.0            | 22.0 | 7.0 | 636                   | S636               | 636-2Z       | S636-2Z     | 636-2RS      | S636-2RS    |
| standard               | 7.0            | 11.0 | 2.5 | MR 117                | SMR 117            | -            | -           | -            | -           |
| flanged                | 7.0            | 11.0 | 2.5 | MF 117                | SMF 117            | -            | -           | -            | -           |

12

| * Load Rating (only 100 Cr6) |            | * Limiting Speed x1000rpm (open & 2Z) |      | Standard cage type<br>Others on request | Weight (g) approx. |
|------------------------------|------------|---------------------------------------|------|---|--------------------|
| C, dyn. N                    | C, stat. N | Grease                                | Oil  |   |                    |
| 1329                         | 507        | 40.0                                  | 50.0 | W,J                                     | < 5 g              |
| 1329                         | 507        | 40.0                                  | 50.0 | W,J                                     | < 5 g              |
| 2020                         | 930        | 30.0                                  | 38.0 | J                                       | < 8 g              |
| 1729                         | 675        | 36.0                                  | 43.0 | W,J                                     | < 6 g              |
| 1729                         | 675        | 36.0                                  | 43.0 | W,J                                     | < 6 g              |
| 2336                         | 896        | 32.0                                  | 40.0 | J                                       | < 8 g              |
| 2336                         | 896        | 32.0                                  | 40.0 | J                                       | < 10 g             |
| 496                          | 218        | 45.0                                  | 53.0 | W                                       | < 1 g              |
| 496                          | 218        | 45.0                                  | 53.0 | W                                       | < 1 g              |
| 496                          | 218        | 45.0                                  | 53.0 | W                                       | < 1 g              |
| 496                          | 218        | 45.0                                  | 53.0 | W                                       | < 1 g              |
| 716                          | 295        | 43.0                                  | 50.0 | W,J                                     | < 2 g              |
| 716                          | 295        | 43.0                                  | 50.0 | W,J                                     | < 2 g              |
| 716                          | 295        | 43.0                                  | 50.0 | W,J                                     | < 2 g              |
| 716                          | 295        | 43.0                                  | 50.0 | W,J                                     | < 2 g              |
| 1082                         | 442        | 40.0                                  | 50.0 | W,J                                     | < 3 g              |
| 1082                         | 442        | 40.0                                  | 50.0 | W,J                                     | < 4 g              |
| 1082                         | 442        | 40.0                                  | 50.0 | W,J                                     | < 4 g              |
| 1082                         | 442        | 40.0                                  | 50.0 | W,J                                     | < 4 g              |
| 1340                         | 523        | 40.0                                  | 45.0 | W,J                                     | < 4 g              |
| 1340                         | 523        | 40.0                                  | 45.0 | W,J                                     | < 4 g              |
| 1340                         | 523        | 40.0                                  | 45.0 | J                                       | < 7 g              |
| 1340                         | 523        | 40.0                                  | 45.0 | J                                       | < 7 g              |
| 2263                         | 846        | 38.0                                  | 45.0 | J                                       | < 7 g              |
| 2263                         | 846        | 38.0                                  | 45.0 | J                                       | < 8 g              |
| 3080                         | 1450       | 30.0                                  | 39.0 | J                                       | < 10 g             |
| 2336                         | 896        | 32.0                                  | 40.0 | J                                       | < 8 g              |
| 2336                         | 896        | 32.0                                  | 40.0 | J                                       | < 10 g             |
| 3333                         | 1423       | 30.0                                  | 36.0 | J                                       | < 5 g              |
| 455                          | 202        | 43.0                                  | 50.0 | W                                       | < 1 g              |
| 455                          | 202        | 43.0                                  | 50.0 | W                                       | < 1 g              |

公制微型轴承



13

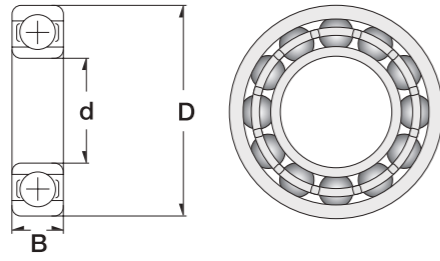
| standard<br>or flanged | Dimension (mm) |      |      | Designation/Type       |                    |              |             |              |              |
|------------------------|----------------|------|------|------------------------|--------------------|--------------|-------------|--------------|--------------|
|                        | d              | D    | B    | open                   |                    | 2Z           |             | 2RS/2TS      |              |
|                        |                |      |      | Chrome Steel           | Stainless          | Chrome Steel | Stainless   | Chrome Steel | Stainless    |
| standard               | 7.0            | 11.0 | 3.0  | -                      | -                  | MR 117-2Z    | SMR 117-2Z  | MR 117-2RS   | SMR 117-2RS  |
| flanged                | 7.0            | 11.0 | 3.0  | -                      | -                  | MF 117-2Z    | SMF 117-2Z  | MF 117-2RS   | SMF 117-2RS  |
| standard               | 7.0            | 13.0 | 3.0  | MR 137                 | SMR 137            | -            | -           | -            | -            |
| flanged                | 7.0            | 13.0 | 3.0  | MF 137                 | SMF 137            | -            | -           | -            | -            |
| standard               | 7.0            | 13.0 | 4.0  | -                      | -                  | MR 137-2Z    | SMR 137-2Z  | MR 137-2RS   | SMR 137-2RS  |
| flanged                | 7.0            | 13.0 | 4.0  | -                      | -                  | MF 137-2Z    | SMF 137-2Z  | MF 137-2RS   | SMF 137-2RS  |
| standard               | 7.0            | 14.0 | 3.5  | 687                    | S687               | -            | -           | -            | -            |
| flanged                | 7.0            | 14.0 | 3.5  | F 687                  | SF 687             | -            | -           | -            | -            |
| standard               | 7.0            | 14.0 | 5.0  | -                      | -                  | 687-2Z       | S687-2Z     | 687-2RS      | S687-2RS     |
| flanged                | 7.0            | 14.0 | 5.0  | -                      | -                  | F 687-2Z     | SF 687-2Z   | F 687-2RS    | SF 687-2RS   |
| standard               | 7.0            | 17.0 | 5.0  | 697                    | S697               | 697-2Z       | S697-2Z     | 697-2RS      | S697-2RS     |
| flanged                | 7.0            | 17.0 | 5.0  | F 697                  | SF 697             | F 697-2Z     | SF 697-2Z   | F 697-2RS    | SF 697-2RS   |
| standard               | 7.0            | 19.0 | 6.0  | 607                    | S607               | 607-2Z       | S607-2Z     | 607-2RS      | S607-2RS     |
| flanged                | 7.0            | 19.0 | 6.0  | F 607                  | SF 607             | F 607-2Z     | SF 607-2Z   | F 607-2RS    | SF 607-2RS   |
| standard               | 7.0            | 19.0 | 10.0 | Zweiheiges Radiallager | Double Row Bearing | 30/7-2Z      | -           | 30/7-2RS     | -            |
| standard               | 7.0            | 22.0 | 7.0  | 627                    | S627               | 627-2Z       | S627-2Z     | 627-2RS      | S627-2RS     |
| flanged                | 7.0            | 22.0 | 7.0  | F 627                  | SF 627             | F 627-2Z     | SF 627-2Z   | F 627-2RS    | SF 627-2RS   |
| standard               | 8.0            | 12.0 | 2.5  | MR 128                 | SMR 128            | -            | -           | -            | -            |
| flanged                | 8.0            | 12.0 | 2.5  | MF 128                 | SMF 128            | -            | -           | -            | -            |
| standard               | 8.0            | 12.0 | 3.5  | -                      | -                  | MR 128-2Z    | SMR 128-2Z  | MR 128-2RS   | SMR 128-2RS  |
| flanged                | 8.0            | 12.0 | 3.5  | -                      | -                  | MF 128-2Z    | SMF 128-2Z  | MF 128-2RS   | SMF 128-2RS  |
| standard               | 8.0            | 14.0 | 3.5  | MR 148                 | SMR 148            | -            | -           | -            | -            |
| flanged                | 8.0            | 14.0 | 3.5  | MF 148                 | SMF 148            | -            | -           | -            | -            |
| standard               | 8.0            | 14.0 | 4.0  | -                      | -                  | MR 148-2Z    | SMR 148-2Z  | MR 148-2RS   | SMR 148-2RS  |
| flanged                | 8.0            | 14.0 | 4.0  | -                      | -                  | MF 148-2Z    | SMF 148-2Z  | MF 148-2RS   | SMF 148-2RS  |
| standard               | 8.0            | 16.0 | 4.0  | 688                    | S688               | 688-2ZW4     | S688-2ZW4   | 688-2RSW4    | S688-2RSW4   |
| flanged                | 8.0            | 16.0 | 4.0  | F 688                  | SF 688             | F 688-2ZW4   | SF 688-2ZW4 | F 688-2RSW4  | SF 688-2RSW4 |
| standard               | 8.0            | 16.0 | 5.0  | 688W5                  | S688W5             | 688-2Z       | S688-2Z     | 688-2RS      | S688-2RS     |
| flanged                | 8.0            | 16.0 | 5.0  | F 688W5                | SF 688W5           | F 688-2Z     | SF 688-2Z   | F 688-2RS    | SF 688-2RS   |
| standard               | 8.0            | 16.0 | 6.0  | 688W6                  | S688W6             | 688-2ZW6     | S688-2ZW6   | 688-2RSW6    | S688-2RSW6   |
| flanged                | 8.0            | 16.0 | 6.0  | F 688W6                | SF 688W6           | F 688-2ZW6   | SF 688-2ZW6 | F 688-2RSW6  | SF 688-2RSW6 |
| standard               | 8.0            | 19.0 | 6.0  | 698                    | S698               | 698-2Z       | S698-2Z     | 698-2RS      | S698-2RS     |
| flanged                | 8.0            | 19.0 | 6.0  | F 698                  | SF 698             | F 698-2Z     | SF 698-2Z   | F 698-2RS    | SF 698-2RS   |

| * Load Rating (only 100 Cr6) |            | * Limiting Speed x1000rpm (open & 2Z) |      | Standard cage type<br>Others on request | Weight (g) approx. |
|------------------------------|------------|---------------------------------------|------|---|--------------------|
| C, dyn. N                    | C, stat. N | Grease                                | Oil  |   |                    |
| 455                          | 202        | 43.0                                  | 50.0 | W                                       | < 1 g              |
| 455                          | 202        | 43.0                                  | 50.0 | W                                       | < 1 g              |
| 541                          | 276        | 40.0                                  | 48.0 | W                                       | < 3 g              |
| 541                          | 276        | 40.0                                  | 48.0 | W                                       | < 3 g              |
| 541                          | 276        | 40.0                                  | 48.0 | W                                       | < 3 g              |
| 541                          | 276        | 40.0                                  | 48.0 | W                                       | < 3 g              |
| 1173                         | 513        | 40.0                                  | 50.0 | W,J                                     | < 4 g              |
| 1173                         | 513        | 40.0                                  | 50.0 | W,J                                     | < 4 g              |
| 1173                         | 513        | 40.0                                  | 50.0 | W,J                                     | < 4 g              |
| 1173                         | 513        | 40.0                                  | 50.0 | W,J                                     | < 4 g              |
| 1605                         | 719        | 36.0                                  | 43.0 | J                                       | < 6 g              |
| 1605                         | 719        | 36.0                                  | 43.0 | J                                       | < 6 g              |
| 2336                         | 896        | 36.0                                  | 43.0 | J                                       | < 8 g              |
| 2336                         | 896        | 36.0                                  | 43.0 | J                                       | < 10 g             |
| 3650                         | 2000       | 28.0                                  | 30.0 | J                                       | < 12 g             |
| 3287                         | 1379       | 30.0                                  | 36.0 | J                                       | < 14 g             |
| 3287                         | 1379       | 30.0                                  | 36.0 | J                                       | < 15 g             |
| 543                          | 274        | 40.0                                  | 48.0 | W                                       | < 1 g              |
| 543                          | 274        | 40.0                                  | 48.0 | W                                       | < 2 g              |
| 543                          | 274        | 40.0                                  | 48.0 | W                                       | < 2 g              |
| 543                          | 274        | 40.0                                  | 48.0 | W                                       | < 2 g              |
| 817                          | 386        | 38.0                                  | 45.0 | W                                       | < 3 g              |
| 817                          | 386        | 38.0                                  | 45.0 | W                                       | < 3 g              |
| 817                          | 386        | 38.0                                  | 45.0 | W                                       | < 3 g              |
| 817                          | 386        | 38.0                                  | 45.0 | W                                       | < 3 g              |
| 1252                         | 592        | 36.0                                  | 43.0 | W,J                                     | < 4 g              |
| 1252                         | 592        | 36.0                                  | 43.0 | W,J                                     | < 4 g              |
| 1252                         | 592        | 36.0                                  | 43.0 | W,J                                     | < 4 g              |
| 1252                         | 592        | 36.0                                  | 43.0 | W,J                                     | < 4 g              |
| 1252                         | 592        | 36.0                                  | 43.0 | W,J                                     | < 5 g              |
| 1252                         | 592        | 36.0                                  | 43.0 | W,J                                     | < 5 g              |
| 2237                         | 917        | 36.0                                  | 43.0 | J                                       | < 8 g              |
| 2237                         | 917        | 36.0                                  | 43.0 | J                                       | < 8 g              |

14



公制微型轴承



15

| standard<br>or flanged | Dimension (mm) |      |      | Designation/Type      |                    |              |            |              |             |
|------------------------|----------------|------|------|-----------------------|--------------------|--------------|------------|--------------|-------------|
|                        | d              | D    | B    | open                  |                    | 2Z           |            | 2RS/2TS      |             |
|                        |                |      |      | Chrome Steel          | Stainless          | Chrome Steel | Stainless  | Chrome Steel | Stainless   |
| standard               | 8.0            | 22.0 | 6.0  | 608W6                 | S608W6             | 608-2ZW6     | S608-2ZW6  | 608-2RSW6    | S608-2RSW6  |
| standard               | 8.0            | 22.0 | 7.0  | 608                   | S608               | 608-2Z       | S608-2Z    | 608-2RS      | S608-2RS    |
| flanged                | 8.0            | 22.0 | 7.0  | F 608                 | SF 608             | F 608-2Z     | SF 608-2Z  | F 608-2RS    | SF 608-2RS  |
| standard               | 8.0            | 22.0 | 11.0 | -                     | -                  | 630/8-2Z     | -          | 630/8-2RS    | -           |
| standard               | 8.0            | 22.0 | 11.0 | Zweihiges Radiallager | Double Row Bearing | 30/8-2Z      | -          | 30/8-2RS     | -           |
| standard               | 8.0            | 24.0 | 7.0  | 608/24                | S608/24            | 608/24-2Z    | S608/24-2Z | 608/24-2RS   | S608/24-2RS |
| standard               | 8.0            | 24.0 | 8.0  | 628                   | S628               | 628-2Z       | S628-2Z    | 628-2RS      | S628-2RS    |
| flanged                | 8.0            | 24.0 | 8.0  | F 628                 | SF 628             | F 628-2Z     | SF 628-2Z  | F 628-2RS    | SF 628-2RS  |
| standard               | 8.0            | 26.0 | 7.0  | 608/26                | S608/26            | 608/26-2Z    | S608/26-2Z | 608/26-2RS   | S608/26-2RS |
| standard               | 8.0            | 28.0 | 9.0  | 638                   | S638               | 638-2Z       | S638-2Z    | 638-2RS      | S638-2RS    |
| standard               | 9.0            | 14.0 | 3.0  | 679                   | S679               | -            | -          | -            | -           |
| standard               | 9.0            | 17.0 | 4.0  | 689                   | S689               | -            | -          | -            | -           |
| flanged                | 9.0            | 17.0 | 4.0  | F 689                 | SF 689             | -            | -          | -            | -           |
| standard               | 9.0            | 17.0 | 5.0  | -                     | -                  | 689-2Z       | S689-2Z    | 689-2RS      | S689-2RS    |
| flanged                | 9.0            | 17.0 | 5.0  | -                     | -                  | F 689-2Z     | SF 689-2Z  | F 689-2RS    | SF 689-2RS  |
| standard               | 9.0            | 17.0 | 6.0  | 689W6                 | S689W6             | 689-2ZW6     | S689-2ZW6  | 689-2RSW6    | S689-2RSW6  |
| standard               | 9.0            | 20.0 | 6.0  | 699                   | S699               | 699-2Z       | S699-2Z    | 699-2RS      | S699-2RS    |
| flanged                | 9.0            | 20.0 | 6.0  | F 699                 | SF 699             | F 699-2Z     | SF 699-2Z  | F 699-2RS    | SF 699-2RS  |
| standard               | 9.0            | 24.0 | 7.0  | 609                   | S609               | 609-2Z       | S609-2Z    | 609-2RS      | S609-2RS    |
| flanged                | 9.0            | 24.0 | 7.0  | F 609                 | SF 609             | F 609-2Z     | SF 609-2Z  | F 609-2RS    | SF 609-2RS  |
| standard               | 9.0            | 26.0 | 8.0  | 629                   | S629               | 629-2Z       | S629-2Z    | 629-2RS      | S629-2RS    |
| flanged                | 9.0            | 26.0 | 8.0  | F 629                 | SF 629             | F 629-2Z     | SF 629-2Z  | F 629-2RS    | SF 629-2RS  |

16

| * Load Rating (only 100 Cr6) |            | * Limiting Speed x1000rpm (open & 2Z) |      | Standard cage type<br>Others on request | Weight (g) approx. |
|------------------------------|------------|---------------------------------------|------|---|--------------------|
| C, dyn. N                    | C, stat. N | Grease                                | Oil  |   |                    |
| 3293                         | 1379       | 34.0                                  | 40.0 | J                                       | < 13 g             |
| 3293                         | 1379       | 34.0                                  | 40.0 | J                                       | < 14 g             |
| 3293                         | 1379       | 34.0                                  | 40.0 | J                                       | < 15 g             |
| 3293                         | 1379       | 34.0                                  | 40.0 | J                                       | < 19 g             |
| 5070                         | 2580       | 30.0                                  | 36.0 | J                                       | < 20 g             |
| 3293                         | 1379       | 34.0                                  | 40.0 | J                                       | < 25 g             |
| 3333                         | 1423       | 28.0                                  | 34.0 | J                                       | < 18 g             |
| 3333                         | 1423       | 28.0                                  | 34.0 | J                                       | < 20 g             |
| 3293                         | 1379       | 34.0                                  | 40.0 | J                                       | < 28 g             |
| 4563                         | 1983       | 28.0                                  | 34.0 | J                                       | < 31 g             |
| 919                          | 468        | 36.0                                  | 42.0 | W                                       | < 3 g              |
| 1327                         | 668        | 36.0                                  | 43.0 | J                                       | < 5 g              |
| 1327                         | 668        | 36.0                                  | 43.0 | J                                       | < 5 g              |
| 1327                         | 668        | 36.0                                  | 43.0 | J                                       | < 5 g              |
| 1327                         | 668        | 36.0                                  | 43.0 | J                                       | < 5 g              |
| 2467                         | 1081       | 34.0                                  | 40.0 | J                                       | < 8 g              |
| 2467                         | 1081       | 34.0                                  | 40.0 | J                                       | < 10 g             |
| 3356                         | 1444       | 32.0                                  | 38.0 | J                                       | < 16 g             |
| 3356                         | 1444       | 32.0                                  | 38.0 | J                                       | < 18 g             |
| 4575                         | 1983       | 28.0                                  | 34.0 | J                                       | < 22 g             |
| 4575                         | 1983       | 28.0                                  | 34.0 | J                                       | < 24 g             |

[www.zen.biz](http://www.zen.biz)

版权所有。  
未经版权所有人明确许可，不得擅自复制、摘录、更改该目录册的任何部分。

v.10 / 12



Bearings for your future